

Indiana Department of Correction
January 2020

Offender Population Report

Prepared for the Justice Reinvestment Advisory Council
and State Budget Committee

Robert Carter, Commissioner



TABLE OF CONTENTS

DOC Monthly Admissions - Adult Offenders	1
Current Adult Offenders, by County of Commit	4
Population Trend Graphs	6
DOC Adult Offenders – Facility Breakdowns, by highest Felony Classification	8
DOC Adult Offenders – Most Serious Offense, Alphabetical by highest Felony Classification	10
DOC Adult Offenders – Most Serious Offense, Ranked by highest Felony Classification	14
Appendix – DOC Facilities – Felony Breakdowns	18



INDIANA DEPARTMENT OF CORRECTION

December 2019 Admissions

by Most Serious Offense

Most Serious Offense	F1	F2	F3	F4	F5	F6	FA	FB	FC	FD	Murder	N
Accident - Fail To Stop - Death	1	1
Aggravated Battery	2	.	6	2	.	.	.	10
Aiding Inducing/Causing An Offense	1	.	1	1	1	.	.	1	.	.	.	5
Arson	.	.	.	2	.	.	.	1	.	.	.	3
Assisting A Criminal	1	1
Attempt To Commit Felony	1	1	4	1	1	.	.	1	.	.	.	9
Attempt to Commit Felony Murder	1	1
Auto Theft, Receiving Stolen Auto Parts	5	3	.	.	.	3	.	11
Battery	.	.	2	.	39	6	.	.	5	.	.	52
Bribery	2	2
Burglary	.	2	3	27	25	.	2	39	5	.	.	103
Carjacking	2	.	.	.	2
Child Exploitation	4	4
Child Molesting	7	.	6	7	.	.	7	8	5	.	.	40
Child Seduction	1	1
Child Solicitation	.	.	.	3	3	1	.	7
Conspiracy	.	.	1	.	1	.	1	1	1	.	.	5
Conversion	1	1
Corrupt Business Influence	3	3
Criminal Confinement	.	.	3	.	3	.	.	1	2	.	.	9
Criminal Deviate Conduct	1	1	.	.	.	2
Criminal Recklessness	2	1	3
Dealing In Cocaine Or Narcotic Drug	.	7	4	14	15	.	3	13	.	.	.	56
Dealing In Marijuana, Hash, or Hash Oil	3	1	.	4
Dealing In Methamphetamine	.	21	16	22	18	.	1	10	.	.	.	88
Dealing In Schedule IV Controlled Substance	1	.	.	.	1
Dealing In a Schedule I, II, or III Controlled Substance	.	.	.	1	3	.	1	5	.	.	.	10
Dealing Substance Resulting in Death	.	.	1	1
Disarming A Law Enforcement Officer	3	3
Domestic Battery	8	8
Domestic Battery With Previous Battery Conviction	21	21
Domestic Battery with Serious Bodily Injury Under Age 14	.	.	1	1
Escape	5	9	14
Failure To Appear	2	2
Failure To Register As A Sex Offender	9	.	.	.	1	.	.	10
Failure To Return Lawful Detention/Escape	1	.	.	1
Firearm Within 1 Mile School Property Without License	2	.	.	2
Forgery,Counterfeiting,Application Fraud	1	.	.	3	.	.	4
Fraud	1	1
Fraud On A Financial Institution	5	5

Note: 6 current admissions have missing sentencing data due to processing or because of safekeeper status.

INDIANA DEPARTMENT OF CORRECTION

December 2019 Admissions

by Most Serious Offense

Most Serious Offense	F1	F2	F3	F4	F5	F6	FA	FB	FC	FD	Murder	N
Handgun Violation (Felony Within 15 Yrs)	33	33
Human Sexual Trafficking	.	.	1	1
Impersonating A Public Servant	1	1
Incest	3	3
Intimidation	11	1	12
Kidnapping	.	.	1	1
Maintaining Common Nuisance	3	3
Manufacture Methamphetamine	.	.	.	3	3
Murder	9	9
Neglect Of A Dependent	3	.	.	1	1	.	.	5
Non Support Of Dependent Child	1	2	.	.	5	1	.	9
Obliterating Handgun I.D.	1	1
Obstruction Of Justice	2	2
Operate Vehicle After Suspended For Life	17	.	.	.	1	.	.	18
Operating Vehicle Intoxicated	1
Operating Vehicle Intoxicated Resulting in Death	.	.	.	2	1	.	.	1	.	.	.	4
Operating Vehicle Intoxicated Resulting in Serious Bodily Injury	2	2
Operating Vehicle While Intoxicated - Prior Conviction	4	4
Operating Vehicle While Intoxicated-Previous Conviction	1	4	.	.	.	1	.	6
Operating Vehicle-Habit Traffic Violator	1	1
Possess Chemical Reagents Or Precursors	2	.	.	2
Possession Legend Drug by Fraud	1	1
Possession Of A Controlled Substance	1	.	.	1
Possession Of A Machine Gun Or Bomb	1	1
Possession Of Child Pornography	1	1
Possession Of Cocaine Or Narcotic Drug	.	.	1	.	5	7	.	2	.	.	.	15
Possession Of Dangerous Device	1	1
Possession Of Methamphetamine	.	.	7	8	24	18	.	3	1	1	.	62
Possession Of Syringes Or Needles	1	7	8
Rape	1	.	2	.	.	.	2	5
Reckless Homicide	3	3
Residential Entry	1	.	1
Resisting Law Enforcement	2	6	8
Robbery	.	.	28	.	9	.	2	19	.	.	.	58
Sexual Battery	2	.	2
Sexual Misconduct W/ Service Provider	1	1
Sexual Misconduct With A Minor	.	.	.	7	7
Strangulation	1	2	3
Theft,Receiving Stolen Property	3	20	23
Trafficking With An Inmate	1	1
Unlawful Firearm Poss By Serious Felon	.	.	.	28	.	.	.	2	.	.	.	30
Vicarious Sexual Gratification	1	.	.	.	1
Violate Condition Lifetime Parole W/ Minr	1	1
Voluntary Manslaughter	.	5	1	1	.	.	.	7
	13	36	88	126	302	110	21	116	36	11	9	869

Note: 6 current admissions have missing sentencing data due to processing or because of safekeeper status.

INDIANA DEPARTMENT OF CORRECTION
ADULT OFFENDERS
by County of Commitment
for January 2020
Snapshot date: 01/01/2020

County of Commit	Department of Correction	**Community Corrections Programs	Local Jail Holds		COUNTY TOTALS
			DOC Contract	Felony Level 6 Diversions	
Adams	134	48	2	26	210
Allen	1,663	538	27	132	2,360
Bartholomew	273	141	2	55	471
Benton*	23	0	0	11	34
Blackford	56	47	1	7	111
Boone	147	85	1	16	249
Brown	44	25	0	25	94
Carroll	69	0	2	6	77
Cass	259	90	4	27	380
Clark	217	163	6	15	401
Clay	68	186	0	45	299
Clinton	165	83	5	35	288
Crawford	22	81	0	8	111
Daviess	99	128	1	8	236
Dearborn	378	81	2	37	498
Decatur	225	95	4	12	336
DeKalb	199	85	1	18	303
Delaware	394	675	1	8	1,078
Dubois	105	214	0	1	320
Elkhart	1,459	340	20	51	1,870
Fayette	180	154	5	28	367
Floyd	198	56	5	37	296
Fountain	44	74	1	2	121
Franklin*	74	0	0	12	86
Fulton	83	117	0	13	213
Gibson	135	46	2	28	211
Grant	389	113	10	16	528
Greene	133	51	1	18	203
Hamilton	312	290	2	65	669
Hancock	155	202	2	147	506
Harrison	130	68	2	15	215
Hendricks	250	156	5	59	470
Henry	252	66	0	0	318
Howard	340	343	3	67	753
Huntington	349	91	0	56	496
Jackson	225	88	2	22	337
Jasper	99	56	0	3	158
Jay	203	7	5	20	235
Jefferson	203	704	1	12	920
Jennings	93	56	1	40	190
Johnson	411	187	5	68	671
Knox	55	122	0	9	186
Kosciusko	273	100	0	83	456
LaGrange	61	19	0	16	96
Lake	1,066	397	17	44	1,524
LaPorte	368	389	10	0	767
Lawrence	223	112	3	3	341
Madison	1,296	299	6	14	1,615
Marion	5,412	5094	27	290	10,823
Marshall	255	106	16	33	410
Martin	41	20	0	4	65
Miami	69	35	5	0	109
Monroe	317	678	4	10	1,009
Montgomery	193	26	1	10	230
Morgan	201	60	6	55	322
Newton*	41	0	0	7	48
Noble	133	163	2	26	324
Ohio	47	6	0	0	53
Orange	151	10	1	5	167
Owen	59	405	1	11	476
Parke	52	8	3	7	70
Perry	83	92	0	9	184
Pike	70	44	1	10	125
Porter	233	108	12	11	364
Posey	86	51	1	9	147
Pulaski	33	15	1	10	59
Putnam	79	48	1	8	136
Randolph	55	20	0	7	82
Ripley	191	43	4	24	262
Rush	78	74	0	6	158
St Joseph	1,045	83	1	21	1,150

*Counties that are not participating in Community Corrections

** Community Corrections data as of 01/07/20

INDIANA DEPARTMENT OF CORRECTION
ADULT OFFENDERS
by County of Commitment
for January 2020
Snapshot date: 01/01/2020

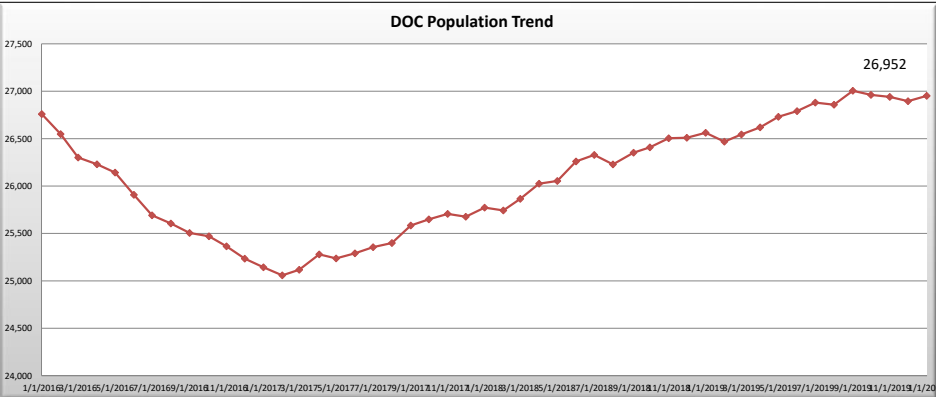
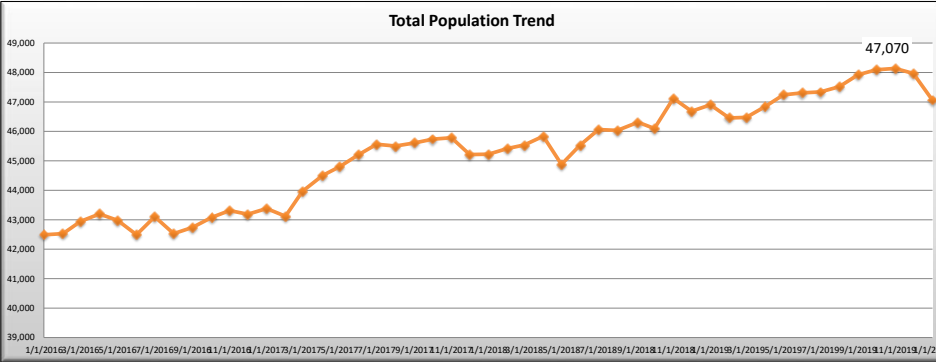
County of Commit	Department of Correction	**Community Corrections Programs	Local Jail Holds		COUNTY TOTALS
			DOC Contract	Felony Level 6 Diversions	
Scott	180	166	1	15	362
Shelby	300	68	0	6	374
Spencer	39	256	7	97	399
Starke	71	51	0	7	129
Steuben	98	58	13	24	193
Sullivan	59	30	0	6	95
Switzerland	32	7	2	2	43
Tippecanoe	775	483	8	26	1,292
Tipton	16	166	0	0	182
Union	28	43	0	5	76
Vanderburgh	1,002	260	15	139	1,416
Vermillion	84	43	0	12	139
Vigo	433	353	1	14	801
Wabash	207	81	0	54	342
Warren	16	7	0	3	26
Warrick	77	27	0	8	112
Washington	141	149	2	17	309
Wayne	427	36	5	69	537
Wells	207	36	5	8	256
White	67	28	1	22	118
Whitley	134	250	2	0	386
Missing	36	0	0	0	36
TOTALS	26,952	17,255	316	2,547	47,070
			2,863		

*Counties that are not participating in Community Corrections

** Community Corrections data as of 01/07/20

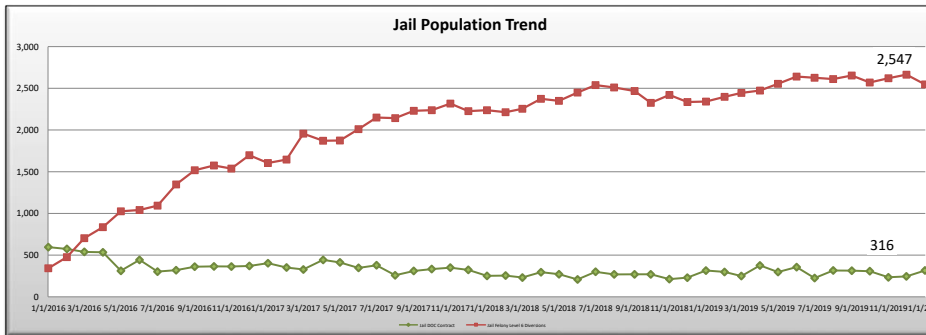
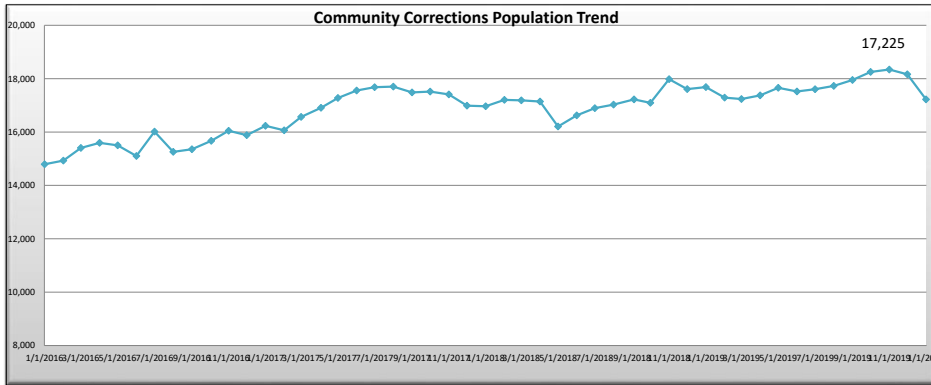
INDIANA DEPARTMENT OF CORRECTION
 ADULT OFFENDERS
 Population Trend Summary
 for January 2020
 Snapshot date: 01/01/2020

Date	DOC Adult	Community Corrections	Jail DOC Contract	Jail Felony Level 6 Diversions	Total
4/1/2018	26,025	17,143	295	2,374	42,976
5/1/2018	26,054	16,205	271	2,350	44,880
6/1/2018	26,260	16,623	208	2,449	45,540
7/1/2018	26,328	16,894	300	2,538	46,060
8/1/2018	26,228	17,026	269	2,510	46,033
9/1/2018	26,352	17,223	270	2,467	46,312
10/1/2018	26,409	17,093	270	2,325	46,097
11/1/2018	26,505	17,984	212	2,420	47,121
12/1/2018	26,510	17,609	230	2,336	46,685
1/1/2019	26,562	17,685	315	2,341	46,903
2/1/2019	26,468	17,291	298	2,398	46,455
3/1/2019	26,545	17,235	249	2,445	46,474
4/1/2019	26,619	17,373	376	2,473	46,841
5/1/2019	26,731	17,659	297	2,554	47,241
6/1/2019	26,791	17,521	356	2,640	47,308
7/1/2019	26,881	17,606	225	2,627	47,339
8/1/2019	26,858	17,730	316	2,611	47,515
9/1/2019	27,005	17,950	314	2,653	47,922
10/1/2019	26,962	18,254	307	2,570	48,093
11/1/2019	26,940	18,343	234	2,621	48,138
12/1/2019	26,895	18,165	245	2,664	47,969
1/1/2020	26,952	17,225	316	2,547	47,070



INDIANA DEPARTMENT OF CORRECTION
 ADULT OFFENDERS
 Population Trend Summary
 for January 2020
 Snapshot date: 01/01/2020

Date	DOC Adult	Community Corrections	Jail DOC Contract	Jail Felony Level 6 Diversions	Total
4/1/2018	26,025	17,143	295	2,374	42,976
5/1/2018	26,054	16,205	271	2,350	44,880
6/1/2018	26,260	16,623	208	2,449	45,540
7/1/2018	26,328	16,894	300	2,538	46,060
8/1/2018	26,228	17,026	269	2,510	46,033
9/1/2018	26,352	17,223	270	2,467	46,312
10/1/2018	26,409	17,093	270	2,325	46,097
11/1/2018	26,505	17,984	212	2,420	47,121
12/1/2018	26,510	17,609	230	2,336	46,685
1/1/2019	26,562	17,685	315	2,341	46,903
2/1/2019	26,468	17,291	298	2,398	46,455
3/1/2019	26,545	17,235	249	2,445	46,474
4/1/2019	26,619	17,373	376	2,473	46,841
5/1/2019	26,731	17,659	297	2,554	47,241
6/1/2019	26,791	17,521	356	2,640	47,308
7/1/2019	26,881	17,606	225	2,627	47,339
8/1/2019	26,858	17,730	316	2,611	47,515
9/1/2019	26,962	18,254	307	2,570	48,093
10/1/2019	26,940	18,343	234	2,621	48,138
11/1/2019	26,895	18,165	245	2,664	47,969
12/1/2019	26,952	17,225	316	2,547	47,070



INDIANA DEPARTMENT OF CORRECTION
by Facility and Highest Felony Classification
for January 2020
Snapshot date: 01/01/2020

Minimum Security - Adult MALE															
Facility Name	Beds	Offenders	% Capacity	Murder	FA	FB	FC	FD	F1	F2	F3	F4	F5	F6	HO
Chain O'Lakes	140	133	95.0%	0	12	22	2	2	0	2	13	23	47	10	0
Edinburgh	344	340	98.8%	0	21	41	8	2	0	8	15	70	136	39	0
Miami - MCA	204	195	95.6%	19	27	44	5	3	0	4	6	25	47	15	0
New Castle - NCA	204	203	99.5%	0	9	27	8	1	0	5	6	32	88	27	0
Pendleton - IRO	220	216	98.2%	18	33	31	1	1	0	4	18	32	62	16	0
Westville - WCA	379	370	97.6%	6	31	56	11	4	0	5	25	67	130	34	1
Wabash Valley - WVA	198	190	96.0%	0	5	18	3	1	0	12	13	51	77	10	0
Sub-Total	1,689	1,647	97.5%	43	138	239	38	14	0	40	96	300	587	151	1

Re-Entry & Work Release - Adult MALE															
Facility Name	Beds	Offenders	% Capacity	Murder	FA	FB	FC	FD	F1	F2	F3	F4	F5	F6	HO
Bartholomew Co. Re-Entry	20	3	15.0%	0	0	2	0	0	0	0	0	0	1	0	0
Lake Co. Re-Entry	10	6	60.0%	0	1	3	0	0	0	0	0	0	2	0	0
South Bend Re-Entry	201	181	90.0%	17	28	40	6	0	0	0	16	26	31	17	0
VOA/Hope Hall Re-Entry	20	17	85.0%	0	2	5	1	0	0	0	0	2	6	1	0
Starke Co. PI - TC	48	42	87.5%	0	1	3	1	0	0	2	5	9	15	6	0
Sub-Total	299	249	83.3%	17	32	53	8	0	0	2	21	37	55	24	0

Medium Security - Adult MALE															
Facility Name	Beds	Offenders	% Capacity	Murder	FA	FB	FC	FD	F1	F2	F3	F4	F5	F6	HO
Branchville	1,533	1,419	92.6%	18	60	206	37	9	0	78	209	284	397	121	0
Correctional Industrial	1,495	1,476	98.7%	72	212	320	37	5	12	155	221	158	221	63	0
Indiana State Prison ISO	385	356	92.5%	30	66	57	12	3	0	5	30	40	98	15	0
Plainfield	1,696	1,494	88.1%	62	129	296	58	8	0	51	173	214	388	114	1
Putnamville	2,510	2,153	85.8%	57	109	390	61	9	0	85	250	373	625	194	0
Heritage Trail	868	859	99.0%	1	7	67	24	10	0	24	105	153	371	97	0
Westville	2,941	2,490	84.7%	66	236	380	98	15	1	60	321	403	751	158	1
New Castle	2,431	2,405	98.9%	15	727	602	134	3	23	12	225	440	214	10	0
Sub-Total	13859	12652	91.3%	321	1,546	2,318	461	62	36	470	1,534	2,065	3,065	772	2

Note: 40 Offenders have missing sentencing data due to processing, misdemeanor, or because of safekeeper status.

INDIANA DEPARTMENT OF CORRECTION
by Facility and Highest Felony Classification
for January 2020
Snapshot date: 01/01/2020

Maximum Security - Adult MALE															
Facility Name	Beds	Offenders	% Capacity	Murder	FA	FB	FC	FD	F1	F2	F3	F4	F5	F6	HO
Miami	2,984	2,946	98.7%	250	450	544	54	4	191	450	478	252	240	33	0
Indiana State Prison	2,067	1,980	95.8%	683	597	247	21	2	129	93	75	54	65	14	0
Pendleton	1,449	1,414	97.6%	462	434	169	13	0	90	72	75	37	55	7	0
Pendleton Treatment Unit	260	166	63.8%	35	40	36	4	0	6	5	12	8	16	4	0
ISR Secure Housing Unit	69	54	78.3%	17	9	17	1	0	1	1	4	2	2	0	0
New Castle Annex	486	438	90.1%	52	112	116	13	0	6	15	46	33	35	10	0
New Castle Mental Health	128	111	86.7%	16	20	25	3	1	3	1	11	8	22	1	0
WCU Secure Housing Unit	110	103	93.6%	16	19	30	3	0	0	1	12	6	13	3	0
Wabash Valley	1,785	1,711	95.9%	513	576	220	12	1	100	66	76	58	73	16	0
WVS Secure Housing Unit	216	184	85.2%	33	29	51	5	0	2	7	18	16	22	1	0
Sub-Total	9,554	9,107	95.3%	2,077	2,286	1,455	129	8	528	711	807	474	543	89	0

Intake Facility - Adult MALE															
Reception Diag. Center	695	671	96.5%	7	9	65	22	6	12	26	85	115	237	86	1
Sub-Total	695	671	96.5%	7	9	65	22	6	12	26	85	115	237	86	1

Minimum Security & Re-Entry - Adult FEMALE															
Facility Name	Beds	Offenders	% Capacity	Murder	FA	FB	FC	FD	F1	F2	F3	F4	F5	F6	HO
Madison	810	651	80.4%	4	28	65	6	2	0	47	94	153	178	74	0
Jefferson Co. Re-Entry	72	69	95.8%	2	5	12	2	0	0	1	11	10	21	5	0
Crane House	45	21	46.7%	0	0	3	1	0	0	0	1	5	8	3	0
Sub-Total	927	741	79.9%	6	33	80	9	2	0	48	106	168	207	82	0

Medium Security - Adult FEMALE															
Facility Name	Beds	Offenders	% Capacity	Murder	FA	FB	FC	FD	F1	F2	F3	F4	F5	F6	HO
Rockville	1,041	976	93.8%	52	101	90	19	5	25	113	146	139	196	90	0
Sub-Total	1,041	976	93.8%	52	101	90	19	5	25	113	146	139	196	90	0

Maximum Security - Adult FEMALE															
Women's Prison	727	689	94.8%	69	61	62	12	6	15	62	92	83	151	76	0
Rockville Intake	212	180	84.9%	0	1	7	1	4	1	9	26	28	62	41	0
Sub-Total	939	869	92.5%	69	62	69	13	10	16	71	118	111	213	117	0

TOTAL	29,003	26,912	92.8%	2,592	4,207	4,369	699	107	617	1,481	2,913	3,409	5,103	1,411	4
--------------	---------------	---------------	--------------	--------------	--------------	--------------	------------	------------	------------	--------------	--------------	--------------	--------------	--------------	----------

Note: 40 Offenders have missing sentencing data due to processing, misdemeanor, or because of safekeeper status.

INDIANA DEPARTMENT OF CORRECTION
ADULT OFFENDERS
by Most Serious Offense, Alphabetical
for January 2020
Snapshot date: 01/01/2020

Most Serious Offense	Murder	FA	FB	FC	FD	F1	F2	F3	F4	F5	F6	HO	Total
Accident Fail To Stop Resulting in Serious Injury or Death	.	.	1	1	18	.	.	20
Aggravated Battery	.	.	156	.	.	11	.	354	521
Aiding Inducing/Causing An Offense	.	49	53	1	.	11	23	57	34	50	4	.	282
Arson	.	13	46	.	.	.	3	2	85	.	1	.	150
Assisting A Criminal	.	.	.	3	16	.	.	19
Assisting Suicide	.	.	.	1	1	.	.	2
Attempt To Commit Felony	.	466	100	5	1	115	41	98	21	76	4	.	927
Attempted Murder	2	2
Auto Theft, Receiving Stolen Auto Parts	.	.	.	6	6	28	48	.	88
Battery	.	23	32	59	2	.	8	43	4	644	51	.	866
Battery By Bodily Waste	.	.	1	.	2	3
Battery To A Child Causing Death	.	4	4
Bribery	7	.	.	7
Burglary	.	253	849	120	.	31	147	47	968	581	.	.	2,996
Carjacking	.	.	31	31
Carrying Handgun Without License	.	.	.	3	3
Causing Suicide	.	.	1	1
Check Deception	1	1	.	2
Check Fraud	.	.	.	1	3	1	2	.	7
Child Exploitation	.	.	.	7	1	.	.	.	13	31	1	.	53
Child Molesting	.	1,390	365	103	.	339	5	137	314	.	.	.	2,653
Child Possession of Firearm	7	.	.	7
Child Seduction	.	.	.	2	7	.	.	9
Child Solicitation	.	.	1	5	1	.	.	.	17	35	.	.	59
Conspiracy	.	93	76	7	.	8	66	61	30	49	3	.	393
Contributing To The Delinquency Of Minor	1	.	1
Controlled Substance Registration	1	3	.	4
Conversion	3	.	.	3
Corrupt Business Influence	.	.	.	8	41	.	.	49
Criminal Confinement	.	.	113	12	1	.	10	111	.	100	6	.	353
Criminal Deviate Conduct	.	136	75	211
Criminal Gang Activity	1	1
Criminal Gang Enhancement	1	1
Criminal Recklessness	.	.	.	7	4	45	17	.	73
Criminal Trespass	1	.	1
Dangerous Control Of A Handgun	1	.	.	1
Deal Sub Represented To Be Controled Sub	1	.	1
Dealing In Cocaine Or Narcotic Drug	.	609	408	.	.	.	323	205	278	210	.	.	2,033
Dealing In Marijuana, Hash, or Hash Oil	.	.	.	2	2	22	8	.	34
Dealing In Methamphetamine	.	186	398	.	.	.	596	412	540	356	.	.	2,488
Dealing In Schedule I, II, or III Controlled Substance	.	68	238	.	.	.	22	21	25	23	1	.	398
Dealing In Schedule IV Controlled Substance	.	.	5	4	.	.	.	10	2	3	.	.	24
Dealing Possessing Look-Alike Substance	.	.	.	4	1	24	13	.	42

Note: 40 offenders have missing sentencing data due to processing or because of safekeeper status.

INDIANA DEPARTMENT OF CORRECTION
ADULT OFFENDERS
by Most Serious Offense, Alphabetical
for January 2020
Snapshot date: 01/01/2020

Most Serious Offense	Murder	FA	FB	FC	FD	F1	F2	F3	F4	F5	F6	HO	Total
Dealing Substance Represented To Be Controlled Substance	1	1
Disarming A Law Enforcement Officer	.	.	.	3	.	.	.	2	.	13	.	.	18
Dissemination Of Matter Harmful To Minor	2	.	2
Domestic Battery	257	62	.	319
Domestic Battery Resulting in Death Under 14	1	1
Domestic Battery with Serious Bodily Injury Under Age 14	5	5
Driving After Forfeiture	.	.	.	1	1
Driving Whl/Suspended Resulting In Death	1	.	.	1
Escape	5	112	136	.	253
Fail To Return To Accident Resulting in Serious Injury	24	24
Fail To Stop After Accident - Operating Vehicle Intoxicated	.	.	5	5
Failure Of Sex Offender To Possess Id	1	1
Failure To Appear	3	.	3
Failure To Register As A Sex Offender	.	.	.	6	166	10	.	182
Failure To Return Lawful Detention/Escape	.	.	8	11	2	21
Firearm Within 1 Mile School Property Without License	.	.	.	6	6
Fleeing Scene of Accident	1	.	1
Forgery,Counterfeiting,Application Fraud	.	.	.	67	31	.	98
Fraud	1	17	.	18
Fraud On A Financial Institution	.	.	.	7	82	.	.	89
Gang Activity	1	.	1
Habitual Offender	1	1	.	2
Habitual Offender Substance Abuse	1	1
Habitual Substance Offender	3	3
Habitual Vehicular Subst Offender	1	1
Handgun Violation	.	.	.	3	359	.	.	362
Home Improvement Fraud Offenses	.	.	.	2	1	.	.	3
Human Sexual Trafficking	.	.	4	.	.	.	1	3	8
Identity Deception	2	1	7	.	10
Impersonating A Public Servant	2	.	2
Incest	.	.	21	3	5	7	.	.	36
Inmate Fraud	1	.	.	1
Insurance Fraud	1	.	.	1
Intimidation	.	.	.	8	4	114	25	.	151
Invasion Of Privacy	10	.	10
Involuntary Manslaughter	7	.	.	7
Kidnapping	.	81	9	19	.	11	1	.	121
Maintaining Common Nuisance	2	20	.	22
Make False Sales Doc	1	.	1
Manufacture Methamphetamine	4	13	.	.	.	17
Manufacturing Methamphetamine	1	1
Murder	2,592	2,592
Neglect Of A Dependent	.	.	23	4	28	6	.	61

Note: 40 offenders have missing sentencing data due to processing or because of safekeeper status.

INDIANA DEPARTMENT OF CORRECTION
ADULT OFFENDERS
by Most Serious Offense, Alphabetical
for January 2020
Snapshot date: 01/01/2020

Most Serious Offense	Murder	FA	FB	FC	FD	F1	F2	F3	F4	F5	F6	HO	Total
Neglect Of A Dependent Resulting in Serious Injury	78	78
Neglect Of Dependent Resulting In Death	.	57	.	.	.	41	98
Non Support Of Dependent Child	.	.	.	60	10	22	12	.	104
Obliterating Handgun I.D.	15	.	.	15
Obstruction Of Justice	1	9	5	.	15
Official Misconduct	1	.	1
Operate Vehicle After Suspended For Life	.	.	.	15	379	.	.	394
Operating Vehicle Intoxicated	4	.	.	4
Operating Vehicle Intoxicated Resulting in Death	.	.	27	1	66	27	.	.	121
Operating Vehicle Intoxicated Resulting in Serious Bodily Injury	.	.	.	2	1	11	6	.	20
Operating Vehicle Intoxicated-Prior Conviction	3	24	.	27
Operating Vehicle While Intoxicated - Endangering Person	2	2
Operating Vehicle While Intoxicated - Prior Conviction	2	.	.	2
Operating Vehicle With Schedule I in Body - Causing Death	.	.	.	1	1
Operating Vehicle With Schedule I,II in Body - Causing Death	1	.	.	.	1
Operating Vehicle-Habit Traffic Violator	3	28	.	31
Opererating Vehicle While Intoxicated - Prior Conviction	70	.	70
Perjury	1	.	1
Pharmacy Robbery	2	.	.	.	2
Pointing a Firearm	1	.	1
Possess Chemical Reagents Or Precursors	.	.	.	7	7
Possess Destructive Device Or Explosive	.	1	6	.	.	2	.	.	9
Possess Of Precursors	2	2	.	4
Possess of Precursors	2	.	.	2
Possession Of A Controlled Substance	.	.	1	4	8	3	.	16
Possession Of A Machine Gun Or Bomb	1	.	.	1
Possession Of Child Pornography	26	1	.	27
Possession Of Cocaine Or Narcotic Drug	.	35	36	12	3	.	.	47	61	118	83	.	395
Possession Of Dangerous Device	9	9	.	.	18
Possession Of Marijuana, Hash, Hash Oil	1	2	.	3
Possession Of Methamphetamine	.	2	40	11	2	.	.	155	194	397	252	.	1,053
Possession Of Syringes Or Needles	9	100	.	109
Possession Or Use Of Legend Drug	4	12	.	16
Prisoner Poss. Dangerous Device/Material	.	.	7	7
Promoting Prostitution	.	.	.	1	8	.	.	9
Promoting Prostitution Under Age 18	.	.	3	1	.	.	.	4
Public Indecency	1	.	1
Rape	.	246	121	.	.	59	.	132	558

Note: 40 offenders have missing sentencing data due to processing or because of safekeeper status.

INDIANA DEPARTMENT OF CORRECTION
ADULT OFFENDERS
by Most Serious Offense, Alphabetical
for January 2020
Snapshot date: 01/01/2020

Most Serious Offense	Murder	FA	FB	FC	FD	F1	F2	F3	F4	F5	F6	HO	Total
Reckless Homicide	.	.	.	6	36	.	.	42
Removing, Damaging, Or Altering a VIN	.	.	.	1	1
Residential Entry	2	25	.	27
Resisting Law Enforcement	.	.	4	1	1	.	1	12	.	9	62	.	90
Robbery	.	219	707	52	.	.	110	872	.	252	.	.	2,212
Sale Of Unregistered Security	.	.	.	2	2
Sex Predator Unlawful Job Near Children	1	.	.	1
Sexual Battery	.	.	.	1	3	.	.	.	10	.	1	.	15
Sexual Misconduct With A Minor	.	3	172	25	152	79	.	.	431
Sexual Misconduct w/ Service Provider	1	.	.	1
Stalking	.	.	4	4	6	34	2	.	50
Strangulation	1	3	15	.	19
Synthetic Identity Deception	9	.	9
Terroristic Mischief	1	.	.	1
Theft,Receiving Stolen Property	.	.	.	2	22	47	190	.	261
Trafficking With An Inmate	.	.	.	6	51	.	.	57
Unlawful Entry by Sex Offender	1	.	1
Unlawful Firearm Poss By Serious Felon	.	.	198	547	.	.	.	745
Vicarious Sexual Gratification	.	.	4	1	5	1	.	.	11
Voluntary Manslaughter	.	273	35	.	.	.	108	416
Welfare Fraud	.	.	.	4	3	7
	2,592	4,207	4,369	699	107	617	1,481	2,913	3,409	5,103	1,411	4	26,912

Note: 40 offenders have missing sentencing data due to processing or because of safekeeper status.

INDIANA DEPARTMENT OF CORRECTION
ADULT OFFENDERS
by Most Serious Offense, Ranked
for January 2020
Snapshot date: 01/01/2020

Most Serious Offense	Murder	FA	FB	FC	FD	F1	F2	F3	F4	F5	F6	HO	Total
Burglary	.	253	849	120	.	31	147	47	968	581	.	.	2,996
Child Molesting	.	1,390	365	103	.	339	5	137	314	.	.	.	2,653
Murder	2,592	2,592
Dealing In Methamphetamine	.	186	398	.	.	.	596	412	540	356	.	.	2,488
Robbery	.	219	707	52	.	.	110	872	.	252	.	.	2,212
Dealing In Cocaine Or Narcotic Drug	.	609	408	.	.	.	323	205	278	210	.	.	2,033
Possession Of Methamphetamine	.	2	40	11	2	.	.	155	194	397	252	.	1,053
Attempt To Commit Felony	.	466	100	5	1	115	41	98	21	76	4	.	927
Battery	.	23	32	59	2	.	8	43	4	644	51	.	866
Unlawful Firearm Poss By Serious Felon	.	.	198	547	.	.	.	745
Rape	.	246	121	.	.	59	.	132	558
Aggravated Battery	.	.	156	.	.	11	.	354	521
Sexual Misconduct With A Minor	.	3	172	25	152	79	.	.	431
Voluntary Manslaughter	.	273	35	.	.	.	108	416
Dealing In Schedule I, II, or III Controlled Substance	.	68	238	.	.	.	22	21	25	23	1	.	398
Possession Of Cocaine Or Narcotic Drug	.	35	36	12	3	.	.	47	61	118	83	.	395
Operate Vehicle After Suspended For Life	.	.	.	15	379	.	.	394
Conspiracy	.	93	76	7	.	8	66	61	30	49	3	.	393
Handgun Violation	.	.	.	3	359	.	.	362
Criminal Confinement	.	.	113	12	1	.	10	111	.	100	6	.	353
Domestic Battery	257	62	.	319
Aiding Inducing/Causing An Offense	.	49	53	1	.	11	23	57	34	50	4	.	282
Theft,Receiving Stolen Property	.	.	.	2	22	47	190	.	261
Escape	5	112	136	.	253
Criminal Deviate Conduct	.	136	75	211
Failure To Register As A Sex Offender	.	.	.	6	166	10	.	182
Intimidation	.	.	.	8	4	114	25	.	151
Arson	.	13	46	.	.	.	3	2	85	.	1	.	150
Kidnapping	.	81	9	19	.	11	1	.	121
Operating Vehicle Intoxicated Resulting in Death	.	.	27	1	66	27	.	.	121
Possession Of Syringes Or Needles	9	100	.	109
Non Support Of Dependent Child	.	.	.	60	10	22	12	.	104
Forgery,Counterfeiting,Application Fraud	.	.	.	67	31	.	98
Neglect Of Dependent Resulting In Death	.	57	.	.	.	41	98
Resisting Law Enforcement	.	.	4	1	1	.	1	12	.	9	62	.	90
Fraud On A Financial Institution	.	.	.	7	82	.	.	89
Auto Theft, Receiving Stolen Auto Parts	.	.	.	6	6	28	48	.	88
Neglect Of A Dependent Resulting in Serious Injury	78	78
Criminal Recklessness	.	.	.	7	4	45	17	.	73
Opererating Vehicle While Intoxicated - Prior Conviction	70	.	70
Neglect Of A Dependent	.	.	23	4	28	6	.	61

Note: 38 offenders have missing sentencing data due to processing or because of safekeeper status.

INDIANA DEPARTMENT OF CORRECTION
ADULT OFFENDERS
by Most Serious Offense, Ranked
for January 2020
Snapshot date: 01/01/2020

Most Serious Offense	Murder	FA	FB	FC	FD	F1	F2	F3	F4	F5	F6	HO	Total
Child Solicitation	.	.	1	5	1	.	.	.	17	35	.	.	59
Trafficking With An Inmate	.	.	.	6	51	.	.	57
Child Exploitation	.	.	.	7	1	.	.	.	13	31	1	.	53
Stalking	.	.	4	4	6	34	2	.	50
Corrupt Business Influence	.	.	.	8	41	.	.	49
Dealing Possessing Look-Alike Substance	.	.	.	4	1	24	13	.	42
Reckless Homicide	.	.	.	6	36	.	.	42
Incest	.	.	21	3	5	7	.	.	36
Dealing In Marijuana, Hash, or Hash Oil	.	.	.	2	2	22	8	.	34
Carjacking	.	.	31	31
Operating Vehicle-Habit Traffic Violator	3	28	.	31
Operating Vehicle Intoxicated-Prior Conviction	3	24	.	27
Possession Of Child Pornography	26	1	.	27
Residential Entry	2	25	.	27
Dealing In Schedule IV Controlled Substance	.	.	5	4	.	.	.	10	2	3	.	.	24
Fail To Return To Accident Resulting in Serious Injury	24	24
Maintaining Common Nuisance	2	20	.	22
Failure To Return Lawful Detention/Escape	.	.	8	11	2	21
Accident Fail To Stop Resulting in Serious Injury or Death	.	.	1	1	18	.	.	20
Operating Vehicle Intoxicated Resulting in Serious Bodily Injury	.	.	.	2	1	11	6	.	20
Assisting A Criminal	.	.	.	3	16	.	.	19
Strangulation	1	3	15	.	19
Disarming A Law Enforcement Officer	.	.	.	3	.	.	.	2	.	13	.	.	18
Fraud	1	17	.	18
Possession Of Dangerous Device	9	9	.	.	18
Manufacture Methamphetamine	4	13	.	.	.	17
Possession Of A Controlled Substance	.	.	1	4	8	3	.	16
Possession Or Use Of Legend Drug	4	12	.	16
Obliterating Handgun I.D.	15	.	.	15
Obstruction Of Justice	1	9	5	.	15
Sexual Battery	.	.	.	1	3	.	.	.	10	.	1	.	15
Vicarious Sexual Gratification	.	.	4	1	5	1	.	.	11
Identity Deception	2	1	7	.	10
Invasion Of Privacy	10	.	10
Child Seduction	.	.	.	2	7	.	.	9
Possess Destructive Device Or Explosive	.	1	6	.	.	2	.	.	9

Note: 38 offenders have missing sentencing data due to processing or because of safekeeper status.

INDIANA DEPARTMENT OF CORRECTION
ADULT OFFENDERS
by Most Serious Offense, Ranked
for January 2020
Snapshot date: 01/01/2020

Most Serious Offense	Murder	FA	FB	FC	FD	F1	F2	F3	F4	F5	F6	HO	Total
Promoting Prostitution	.	.	.	1	8	.	.	9
Synthetic Identity Deception	9	.	9
Human Sexual Trafficking	.	.	4	.	.	.	1	3	8
Bribery	7	.	.	7
Check Fraud	.	.	.	1	3	1	2	.	7
Child Possession of Firearm	7	.	.	7
Involuntary Manslaughter	7	.	.	7
Possess Chemical Reagents Or Precursors	.	.	.	7	7
Prisoner Poss. Dangerous Device/Material	.	.	7	7
Welfare Fraud	.	.	.	4	3	7
Firearm Within 1 Mile School Property Without License	.	.	.	6	6
Operating Vehicle Intoxicated	4	.	.	6
Domestic Battery with Serious Bodily Injury Under Age 14	5	5
Fail To Stop After Accident - Operating Vehicle Intoxicated	.	.	5	5
Battery To A Child Causing Death	.	4	4
Controlled Substance Registration	1	3	.	4
Possess Of Precursors	2	2	.	4
Promoting Prostitution Under Age 18	.	.	3	1	.	.	.	4
Battery By Bodily Waste	.	.	1	.	2	3
Carrying Handgun Without License	.	.	.	3	3
Conversion	3	.	.	3
Failure To Appear	3	.	3
Habitual Substance Offender	3	3
Home Improvement Fraud Offenses	.	.	.	2	1	.	.	3
Possession Of Marijuana, Hash, Hash Oil	1	2	.	3
Assisting Suicide	.	.	.	1	1	.	.	2
Attempted Murder	2	2
Check Deception	1	1	.	2
Dissemination Of Matter Harmful To Minor	2	.	2
Habitual Offender	1	1	.	2
Impersonating A Public Servant	2	.	2
Operating Vehicle While Intoxicated - Endangering Person	2	2
Operating Vehicle While Intoxicated - Prior Conviction	2	.	.	2
Pharmacy Robbery	2	.	.	.	2
Possess of Precursors	2	.	.	2
Sale Of Unregistered Security	.	.	.	2	2
Causing Suicide	.	.	1	1
Contributing To The Delinquency Of Minor	1	.	1
Criminal Gang Activity	1	1
Criminal Gang Enhancement	1	1
Criminal Trespass	1	.	1

Note: 38 offenders have missing sentencing data due to processing or because of safekeeper status.

INDIANA DEPARTMENT OF CORRECTION
ADULT OFFENDERS
by Most Serious Offense, Ranked
for January 2020
Snapshot date: 01/01/2020

Most Serious Offense	Murder	FA	FB	FC	FD	F1	F2	F3	F4	F5	F6	HO	Total
Dangerous Control Of A Handgun	1	.	.	1
Deal Sub Represented To Be Controlled Sub	1	.	1
Dealing Substance Represented To Be Controlled Substance	1	1
Domestic Battery Resulting in Death Under 14	1	1
Driving After Forfeiture	.	.	.	1	1
Driving Whl/Suspended Resulting In Death	1	.	.	1
Failure Of Sex Offender To Possess Id	1	1
Fleeing Scene of Accident	1	.	1
Gang Activity	1	.	1
Habitual Offender Substance Abuse	1	1
Habitual Vehicular Subst Offender	1	1
Inmate Fraud	1	.	.	1
Insurance Fraud	1	.	.	1
Make False Sales Doc	1	.	1
Manufacturing Methamphetamine	1	1
Official Misconduct	1	.	1
Operating Vehicle With Schedule I in Body - Causing Death	.	.	.	1	1
Operating Vehicle With Schedule I,II in Body - Causing Death	1	.	.	.	1
Perjury	1	.	1
Pointing a Firearm	1	.	1
Possession Of A Machine Gun Or Bomb	1	.	.	1
Public Indecency	1	.	1
Removing, Damaging, Or Altering a VIN	.	.	.	1	1
Sex Predator Unlawful Job Near Children	1	.	.	1
Sexual Misconduct w/ Service Provider	1	.	.	1
Terroristic Mischief	1	.	.	1
Unlawful Entry by Sex Offender	1	.	1
	2,592	4,207	4,369	699	107	617	1,481	2,913	3,409	5,103	1,411	4	26,914

Note: 38 offenders have missing sentencing data due to processing or because of safekeeper status.

Felony Levels By Facility
For Most Serious Offense
January 2020
Snapshot Date: January 1st, 2020

INDIANA DEPARTMENT OF CORRECTION
ADULT OFFENDERS
by Most Serious Offense

Branchville Correctional Facility (BTC)													
Most Serious Offense	Murder	FA	FB	FC	FD	F1	F2	F3	F4	F5	F6	HO	Total
Aggravated Battery	.	.	6	13	19
Aiding Inducing/Causing An Offense	.	1	4	.	.	.	1	1	2	1	.	.	10
Arson	.	1	2	4	.	.	.	7
Assisting A Criminal	1	.	.	1
Attempt To Commit Felony	.	10	4	.	.	.	4	6	2	5	.	.	31
Auto Theft, Receiving Stolen Auto Parts	1	3	5	.	9
Battery	.	.	1	4	.	.	1	4	.	47	5	.	62
Battery By Bodily Waste	1	1
Burglary	.	5	56	10	.	.	6	3	85	53	.	.	218
Carjacking	.	.	1	1
Check Fraud	1	1
Child Molesting	.	2	3	5
Conspiracy	.	3	9	1	.	.	2	9	6	4	1	.	35
Corrupt Business Influence	2	.	.	2
Criminal Confinement	.	.	4	10	.	15	1	.	30
Criminal Deviate Conduct	.	1	1
Criminal Recklessness	6	.	.	6
Dealing In Cocaine Or Narcotic Drug	.	13	15	.	.	.	16	18	17	19	.	.	98
Dealing In Marijuana, Hash, or Hash Oil	1	1	.	.	2
Dealing In Methamphetamine	.	6	44	.	.	.	46	68	70	29	.	.	263
Dealing In Schedule I, II, or III Controlled Substance	.	1	17	1	.	.	.	19
Dealing In Schedule IV Controlled Substance	1	.	2	.	.	3
Dealing Possessing Look-Alike Substance	2	1	.	3
Disarming A Law Enforcement Officer	.	.	.	1	1
Domestic Battery	25	7	.	32
Escape	1	9	15	.	25
Failure To Register As A Sex Offender	9	1	.	10
Forgery,Counterfeiting,Application Fraud	.	.	.	2	2	.	4
Fraud	1	.	1
Fraud On A Financial Institution	.	.	.	1	7	.	.	8
Habitual Offender	1	.	.	1
Handgun Violation	24	.	.	24
Intimidation	.	.	.	1	9	2	.	12
Involuntary Manslaughter	1	.	.	1
Kidnapping	.	1	1

INDIANA DEPARTMENT OF CORRECTION
ADULT OFFENDERS
by Most Serious Offense

Branchville Correctional Facility (BTC)													
Most Serious Offense	Murder	FA	FB	FC	FD	F1	F2	F3	F4	F5	F6	HO	Total
Maintaining Common Nuisance	1	.	1
Manufacture Methamphetamine	1	2	.	.	.	3
Murder	18	18
Neglect Of A Dependent	.	.	1	2	.	.	3
Neglect Of A Dependent Resulting In Serious Injury	2	2
Neglect Of Dependent Resulting In Death	.	1	1
Non Support Of Dependent Child	.	.	.	4	1	2	2	.	9
Obliterating Handgun I.D.	6	.	.	6
Obstruction Of Justice	1	1	.	2
Official Misconduct	1	.	1
Operate Vehicle After Suspended For Life	.	.	.	2	31	.	.	33
Operating Vehicle Intoxicated	1	.	.	1
Operating Vehicle Intoxicated Resulting In Death	.	.	1	9	2	.	.	12
Operating Vehicle Intoxicated Resulting In Serious Bodily Injury	.	.	.	1	1	2
Operating Vehicle-Habit Traffic Violator	3	.	3
Operating Vehicle While Intoxicated - Prior Conviction	2	.	2
Possess Chemical Reagents Or Precursors	.	.	.	1	1
Possess Destructive Device Or Explosive	1	1
Possession Of A Controlled Substance	.	.	.	1	2	3
Possession Of Cocaine Or Narcotic Drug	.	2	1	2	4	10	4	.	23
Possession Of Dangerous Device	1	.	.	1
Possession Of Methamphetamine	.	.	2	23	23	34	24	.	106
Possession Of Syringes Or Needles	1	10	.	11
Possession Or Use Of Legend Drug	2	.	2
Promoting Prostitution	.	.	.	1	1
Rape	.	.	1	1
Reckless Homicide	.	.	.	1	1	.	.	2
Residential Entry	5	.	5
Resisting Law Enforcement	2	6	.	8
Robbery	.	6	22	4	.	.	1	48	.	17	.	.	98
Sexual Battery	1	1
Sexual Misconduct With A Minor	.	.	1	1	.	.	.	2
Stalking	.	.	.	2	5	.	.	7
Strangulation	1	.	1
Theft,Receiving Stolen Property	2	18	.	20
Trafficking With An Inmate	4	.	.	4
Unlawful Firearm Poss By Serious Felon	.	.	10	57	.	.	.	67
Voluntary Manslaughter	.	7	1	8
Total	18	60	206	37	9	0	78	209	284	397	121	0	1419

INDIANA DEPARTMENT OF CORRECTION
ADULT OFFENDERS
by Most Serious Offense

Correctional Industrial Facility (CIC)												
Most Serious Offense	Murder	FA	FB	FC	FD	F1	F2	F3	F4	F5	F6	Total
Aggravated Battery	.	.	19	.	.	1	.	40	.	.	.	60
Aiding Inducing/Causing An Offense	.	3	7	.	.	.	2	6	2	1	.	21
Arson	.	.	3	4	.	.	7
Assisting Suicide	.	.	.	1	1
Attempt To Commit Felony	.	29	8	.	.	2	2	1	1	3	.	46
Auto Theft, Receiving Stolen Auto Parts	.	.	.	1	5	6
Battery	.	1	1	5	.	.	1	2	.	34	3	47
Burglary	.	24	67	8	.	.	19	2	62	28	.	210
Carjacking	.	.	2	2
Check Fraud	1	1
Child Molesting	.	21	6	1	.	6	.	4	2	.	.	40
Child Solicitation	1	.	1
Conspiracy	.	9	3	.	.	1	3	7	1	3	.	27
Corrupt Business Influence	2	.	2
Criminal Confinement	.	.	8	3	.	.	.	7	.	4	1	23
Criminal Deviate Conduct	.	2	2	4
Criminal Recklessness	3	.	3
Dealing In Cocaine Or Narcotic Drug	.	50	37	.	.	.	39	11	9	6	.	152
Dealing In Marijuana, Hash, or Hash Oil	1	1
Dealing In Methamphetamine	.	23	34	.	.	.	65	27	28	16	.	193
Dealing In Schedule I, II, or III Controlled Substance	.	6	15	.	.	.	1	.	1	2	.	25
Dealing In Schedule IV Controlled Substance	.	.	2	1	.	.	.	3
Dealing Possessing Look-Alike Substance	2	1	3
Disarming A Law Enforcement Officer	.	.	.	1	.	.	.	1	.	1	.	3
Domestic Battery	13	3	16
Escape	7	10	17
Fail To Return To Accident Resulting in Serious Injury	3	.	.	.	3
Failure To Register As A Sex Offender	12	3	15
Failure To Return Lawful Detention/Escape	.	.	1	1	2
Forgery,Counterfeiting,Application Fraud	.	.	.	3	1	4
Fraud On A Financial Institution	8	.	8
Habitual Offender Substance Abuse	1	1
Handgun Violation	17	.	17
Identity Deception	2	2
Intimidation	4	2	6
Invasion Of Privacy	1	1

INDIANA DEPARTMENT OF CORRECTION
ADULT OFFENDERS
by Most Serious Offense

Correctional Industrial Facility (CIC)												
Most Serious Offense	Murder	FA	FB	FC	FD	F1	F2	F3	F4	F5	F6	Total
Kidnapping	.	6	3	.	.	.	9
Manufacture Methamphetamine	1	.	.	1
Manufacturing Methamphetamine	1	1
Murder	72	72
Neglect Of A Dependent	.	.	2	1	1	4
Neglect Of A Dependent Resulting in Serious Injury	8	.	.	.	8
Neglect Of Dependent Resulting In Death	.	1	.	.	.	1	2
Non Support Of Dependent Child	.	.	.	5	1	6
Obliterating Handgun I.D.	2	.	2
Operate Vehicle After Suspended For Life	.	.	.	1	13	.	14
Operating Vehicle Intoxicated Resulting in Death	.	.	2	1	1	.	4
Operating Vehicle Intoxicated-Prior Conviction	1	1	2
Possess Destructive Device Or Explosive	.	1	1	.	2
Possession Of Cocaine Or Narcotic Drug	.	4	4	2	8	4	2	24
Possession Of Dangerous Device	1	.	.	1
Possession Of Methamphetamine	.	.	3	1	.	.	.	9	5	8	7	33
Possession Of Syringes Or Needles	2	7	9
Promoting Prostitution	1	.	1
Rape	.	1	4	.	.	1	.	5	.	.	.	11
Reckless Homicide	.	.	.	1	2	.	3
Residential Entry	1	1
Resisting Law Enforcement	6	6
Robbery	.	10	61	5	.	.	10	82	.	15	.	183
Sexual Misconduct With A Minor	.	.	5	1	.	.	6
Stalking	1	.	1
Strangulation	1	1
Theft,Receiving Stolen Property	1	2	4	7
Trafficking With An Inmate	1	.	1
Unlawful Firearm Poss By Serious Felon	.	.	20	31	.	.	51
Vicarious Sexual Gratification	.	.	1	1
Voluntary Manslaughter	.	21	3	.	.	.	12	36
Total	72	212	320	37	5	12	155	221	158	221	63	1476

INDIANA DEPARTMENT OF CORRECTION
ADULT OFFENDERS
by Most Serious Offense

Chain O'Lakes Correctional Facility (COL)											
Most Serious Offense	FA	FB	FC	FD	F1	F2	F3	F4	F5	F6	Total
Aiding Inducing/Causing An Offense	1	.	1
Battery	3	.	3
Burglary	.	3	1	.	.	1	1	7	5	.	18
Corrupt Business Influence	3	.	3
Criminal Confinement	1	.	1
Criminal Recklessness	1	1
Dealing In Cocaine Or Narcotic Drug	3	4	.	.	.	1	3	7	1	.	19
Dealing In Marijuana, Hash, or Hash Oil	1	.	1
Dealing In Methamphetamine	5	8	2	4	3	.	22
Dealing In Schedule I, II, or III Controlled Substance	2	2	1	.	1	.	6
Domestic Battery	3	1	4
Handgun Violation	1	.	1
Identity Deception	1	1
Intimidation	2	.	2
Manufacture Methamphetamine	1	.	.	1
Neglect Of A Dependent	1	.	1
Non Support Of Dependent Child	.	.	.	1	2	.	3
Operate Vehicle After Suspended For Life	10	.	10
Operating Vehicle Intoxicated Resulting in Death	1	.	1
Operating Vehicle Intoxicated-Prior Conviction	1	1
Possession Of Cocaine Or Narcotic Drug	2	2	1	5
Possession Of Methamphetamine	.	2	4	2	4	2	14
Resisting Law Enforcement	1	1
Robbery	.	3	1	.	.	.	2	.	1	.	7
Theft,Receiving Stolen Property	.	.	.	1	2	3
Trafficking With An Inmate	1	.	1
Unlawful Firearm Poss By Serious Felon	2	.	.	2
Total	12	22	2	2	0	2	13	23	47	10	133

INDIANA DEPARTMENT OF CORRECTION
ADULT OFFENDERS
by Most Serious Offense

Edinburgh Correctional Facility (JCU)													
Most Serious Offense	Murder	FA	FB	FC	FD	F1	F2	F3	F4	F5	F6	HO	Total
Auto Theft, Receiving Stolen Auto Parts	1	.	.	1
Battery	4	.	.	4
Burglary	.	.	10	3	.	.	1	1	27	18	.	.	60
Conspiracy	.	1	1	.	.	.	1	1	1	.	.	.	5
Criminal Confinement	1	.	.	1
Criminal Recklessness	1	1
Dealing In Cocaine Or Narcotic Drug	.	14	9	.	.	.	4	.	7	8	.	.	42
Dealing In Marijuana, Hash, or Hash Oil	1	2	.	3
Dealing In Methamphetamine	.	3	8	.	.	.	2	6	18	29	.	.	66
Dealing In Schedule I, II, or III Controlled Substance	.	2	5	2	3	.	.	12
Dealing Possessing Look-Alike Substance	.	.	.	1	1	.	2
Domestic Battery	1	.	.	1
Fail To Return To Accident Resulting in Serious Injury	1	1
Forgery,Counterfeiting,Application Fraud	.	.	.	1	1	.	2
Fraud On A Financial Institution	2	.	.	2
Handgun Violation	12	.	.	12
Home Improvement Fraud Offenses	.	.	.	1	1	.	.	2
Intimidation	1	1
Maintaining Common Nuisance	1	.	1
Neglect Of A Dependent	1	.	.	1
Non Support Of Dependent Child	.	.	.	2	4	2	.	8
Operate Vehicle After Suspended For Life	22	.	.	22
Operating Vehicle Intoxicated Resulting in Death	2	2	.	.	4
Operating Vehicle Intoxicated Resulting in Serious Bodily Injury	1	.	1
Operating Vehicle While Intoxicated - Prior Conviction	1	.	.	1
Operating Vehicle-Habit Traffic Violator	2	.	2
Opererating Vehicle While Intoxicated - Prior Conviction	7	.	7
Possess of Precursors	1	.	.	1
Possession Of Cocaine Or Narcotic Drug	.	1	1	2	.	5	5	.	14
Possession Of Dangerous Device	1	.	.	1
Possession Of Marijuana, Hash, Hash Oil	1	.	1
Possession Of Methamphetamine	.	.	1	6	13	12	.	32
Possession Of Syringes Or Needles	1	1	.	2
Resisting Law Enforcement	1	.	1
Robbery	.	.	6	4	10
Theft,Receiving Stolen Property	1	2	.	3
Trafficking With An Inmate	3	.	.	3
Unlawful Firearm Poss By Serious Felon	7	.	.	.	7
Total	0	21	41	8	2	0	8	15	70	136	39	0	340

INDIANA DEPARTMENT OF CORRECTION
ADULT OFFENDERS
by Most Serious Offense

Heritage Trail Correctional Facility (STP)													
Most Serious Offense	Murder	FA	FB	FC	FD	F1	F2	F3	F4	F5	F6	HO	Total
Aggravated Battery	.	.	2	8	10
Aiding Inducing/Causing An Offense	4	1	3	1	.	9
Arson	3	.	1	.	4
Assisting A Criminal	2	.	.	2
Attempt To Commit Felony	.	1	1	.	.	.	1	2	.	2	2	.	9
Auto Theft, Receiving Stolen Auto Parts	2	4	.	6
Battery	.	.	.	2	.	.	.	1	.	67	2	.	72
Burglary	.	.	18	2	.	.	1	2	44	34	.	.	101
Conspiracy	.	.	2	.	.	.	3	3	4	1	.	.	13
Corrupt Business Influence	3	.	.	3
Criminal Confinement	5	.	9	1	.	15
Criminal Gang Enhancement	1	1
Criminal Recklessness	4	1	.	5
Deal Sub Represented To Be Controlled Sub	1	.	1
Dealing In Cocaine Or Narcotic Drug	.	3	13	.	.	.	8	15	19	14	.	.	72
Dealing In Methamphetamine	.	1	12	.	.	.	7	21	27	13	.	.	81
Dealing In Schedule I, II, or III Controlled Substance	.	1	8	1	1	.	.	.	11
Dealing In Schedule IV Controlled Substance	1	1
Dealing Possessing Look-Alike Substance	1	.	.	1
Disarming A Law Enforcement Officer	1	.	.	1
Domestic Battery	41	4	.	45
Escape	1	5	12	.	18
Fail To Return To Accident Resulting in Serious Injury	2	2
Failure To Return Lawful Detention/Escape	2	2
Fleeing Scene of Accident	1	.	1
Forgery,Counterfeiting,Application Fraud	.	.	.	2	4	.	6
Fraud On A Financial Institution	1	.	.	1
Handgun Violation	.	.	.	1	48	.	.	49
Identity Deception	1	.	1
Intimidation	6	2	.	8
Involuntary Manslaughter	2	.	.	2
Kidnapping	.	1	1
Maintaining Common Nuisance	1	.	1
Murder	1	1
Neglect Of A Dependent	1	.	.	1
Neglect Of A Dependent Resulting in Serious Injury	1	1
Non Support Of Dependent Child	.	.	.	10	2	1	.	.	13
Obliterating Handgun I.D.	2	.	.	2
Obstruction Of Justice	1	.	.	1

INDIANA DEPARTMENT OF CORRECTION
ADULT OFFENDERS
by Most Serious Offense

Heritage Trail Correctional Facility (STP)													
Most Serious Offense	Murder	FA	FB	FC	FD	F1	F2	F3	F4	F5	F6	HO	Total
Operate Vehicle After Suspended For Life	47	.	.	47
Operating Vehicle Intoxicated Resulting in Death	1	4	.	.	5
Operating Vehicle Intoxicated Resulting in Serious Bodily Injury	1	1	.	2
Operating Vehicle Intoxicated-Prior Conviction	1	.	1
Operating Vehicle While Intoxicated - Endangering Person	1	1
Operating Vehicle-Habit Traffic Violator	1	.	1
Opererating Vehicle While Intoxicated - Prior Conviction	8	.	8
Possession Of Cocaine Or Narcotic Drug	.	.	1	2	.	.	.	1	2	5	4	.	15
Possession Of Methamphetamine	.	.	.	2	.	.	.	5	10	23	14	.	54
Possession Of Syringes Or Needles	6	.	6
Possession Or Use Of Legend Drug	1	.	.	1
Reckless Homicide	5	.	.	5
Residential Entry	1	3	.	4
Resisting Law Enforcement	6	.	6
Robbery	.	.	10	3	.	.	4	32	.	12	.	.	61
Stalking	3	.	.	3
Strangulation	1	1	3	.	5
Synthetic Identity Deception	1	.	1
Theft,Receiving Stolen Property	2	3	11	.	16
Trafficking With An Inmate	2	.	.	2
Unlawful Firearm Poss By Serious Felon	40	.	.	.	40
Welfare Fraud	1	1
Total	1	7	67	24	10	0	24	105	153	371	97	0	859

INDIANA DEPARTMENT OF CORRECTION
ADULT OFFENDERS
by Most Serious Offense

Indiana State Prison (ISP)													
Most Serious Offense	Murder	FA	FB	FC	FD	F1	F2	F3	F4	F5	F6	HO	Total
Accident Fail To Stop Resulting in Serious Injury or Death	1	1	.	.	2
Aggravated Battery	.	.	18	22	40
Aiding Inducing/Causing An Offense	.	6	7	1	.	1	3	3	1	.	.	.	22
Arson	1	.	2	.	.	.	3
Attempt To Commit Felony	.	77	10	.	.	26	2	5	120
Attempted Murder	1	1
Auto Theft, Receiving Stolen Auto Parts	1	2	.	3
Battery	.	5	4	5	.	.	1	1	.	22	.	.	38
Bribery	1	.	.	1
Burglary	.	47	57	10	.	8	9	1	24	25	.	.	181
Carjacking	.	.	4	4
Child Molesting	.	199	11	1	.	73	.	2	4	.	.	.	290
Conspiracy	.	10	5	.	.	1	5	2	1	1	.	.	25
Corrupt Business Influence	.	.	.	1	1	.	.	2
Criminal Confinement	.	.	9	.	1	.	3	3	.	4	.	.	20
Criminal Deviate Conduct	.	20	3	23
Criminal Recklessness	1	1	.	.	2
Dealing In Cocaine Or Narcotic Drug	.	96	30	.	.	.	22	5	14	6	.	.	173
Dealing In Methamphetamine	.	21	13	.	.	.	35	5	13	5	.	.	92
Dealing In Schedule I, II, or III Controlled Substance	.	5	9	.	.	.	1	1	.	1	.	.	17
Dealing Possessing Look-Alike Substance	1	1	.	2
Domestic Battery	11	1	.	12
Escape	5	4	.	9
Fail To Return To Accident Resulting in Serious Injury	3	3
Failure To Register As A Sex Offender	1	.	.	1
Failure To Return Lawful Detention/Escape	.	.	2	2
Firearm Within 1 Mile School Property Without License	.	.	.	2	2
Forgery,Counterfeiting,Application Fraud	.	.	.	2	1	.	3
Fraud On A Financial Institution	4	.	.	4
Handgun Violation	20	.	.	20
Human Sexual Trafficking	.	.	1	1
Intimidation	3	.	.	3
Kidnapping	.	15	1	16
Maintaining Common Nuisance	1	.	1
Murder	713	713
Neglect Of A Dependent	.	.	2	1	.	.	3
Neglect Of A Dependent Resulting in Serious Injury	1	1
Neglect Of Dependent Resulting In Death	.	8	.	.	.	8	16
Non Support Of Dependent Child	.	.	.	1	1	1	.	3

INDIANA DEPARTMENT OF CORRECTION
ADULT OFFENDERS
by Most Serious Offense

Indiana State Prison (ISP)													
Most Serious Offense	Murder	FA	FB	FC	FD	F1	F2	F3	F4	F5	F6	HO	Total
Operate Vehicle After Suspended For Life	.	.	.	2	15	.	.	17
Operating Vehicle Intoxicated Resulting in Death	.	.	2	1	1	.	.	4
Operating Vehicle Intoxicated Resulting in Serious Bodily Injury	1	.	.	1
Operating Vehicle With Schedule I in Body - Causing Death	.	.	.	1	1
Operating Vehicle-Habit Traffic Violator	1	2	.	3
Possess Of Precursors	1	1
Possession Of A Controlled Substance	.	.	1	1
Possession Of Child Pornography	1	.	.	1
Possession Of Cocaine Or Narcotic Drug	.	6	1	1	3	4	2	.	17
Possession Of Dangerous Device	1	.	.	1
Possession Of Methamphetamine	.	.	1	3	4	7	7	.	22
Possession Of Syringes Or Needles	1	.	1
Prisoner Poss. Dangerous Device/Material	.	.	1	1
Rape	.	53	9	.	.	11	.	2	75
Reckless Homicide	.	.	.	1	2	.	.	3
Resisting Law Enforcement	2	.	1	.	.	3
Robbery	.	41	75	5	.	.	7	43	.	11	.	.	182
Sexual Misconduct With A Minor	.	.	9	1	2	.	.	.	12
Stalking	1	.	.	1
Strangulation	1	.	1
Synthetic Identity Deception	1	.	1
Theft,Receiving Stolen Property	1	4	.	5
Trafficking With An Inmate	2	.	.	2
Unlawful Firearm Poss By Serious Felon	.	.	16	24	.	.	.	40
Voluntary Manslaughter	.	54	4	.	.	.	8	66
Total	713	663	304	33	5	129	98	105	94	163	29	0	2336

INDIANA DEPARTMENT OF CORRECTION
ADULT OFFENDERS
by Most Serious Offense

Indiana Women's Prison (IWP)													
Most Serious Offense	Murder	FA	FB	FC	FD	F1	F2	F3	F4	F5	F6	HO	Total
Accident Fail To Stop Resulting in Serious Injury or Death	1	.	.	1
Aggravated Battery	.	.	3	10	13
Aiding Inducing/Causing An Offense	.	5	3	.	.	1	1	5	.	3	.	.	18
Arson	.	1	2	.	.	.	1	.	2	.	.	.	6
Assisting A Criminal	2	.	.	2
Attempt To Commit Felony	.	6	.	.	1	2	4	2	1	5	.	.	21
Auto Theft, Receiving Stolen Auto Parts	1	1	.	2
Battery	.	2	21	2	.	25
Battery To A Child Causing Death	.	1	1
Burglary	.	.	7	1	.	2	.	.	27	14	.	.	51
Child Molesting	1	1
Conspiracy	.	2	5	.	.	1	4	2	1	4	.	.	19
Controlled Substance Registration	1	.	1
Conversion	1	.	.	1
Corrupt Business Influence	3	.	.	3
Criminal Confinement	.	.	1	4	5
Criminal Recklessness	1	.	.	1
Dealing In Cocaine Or Narcotic Drug	.	8	8	.	.	.	5	3	8	9	.	.	41
Dealing In Methamphetamine	.	9	9	.	.	.	33	19	24	12	.	.	106
Dealing In Schedule I, II, or III Controlled Substance	.	4	6	.	.	.	1	1	3	2	.	.	17
Dealing In Schedule IV Controlled Substance	.	.	.	1	1
Dealing Possessing Look-Alike Substance	1	.	.	1
Domestic Battery	5	1	.	6
Escape	6	15	.	21
Forgery,Counterfeiting,Application Fraud	.	.	.	5	1	.	6
Fraud	2	.	2
Fraud On A Financial Institution	4	.	.	4
Handgun Violation	4	.	.	4
Incest	.	.	1	1
Insurance Fraud	1	.	.	1
Intimidation	2	.	.	2
Involuntary Manslaughter	1	.	.	1
Kidnapping	1	1
Maintaining Common Nuisance	1	1	.	2

INDIANA DEPARTMENT OF CORRECTION
ADULT OFFENDERS
by Most Serious Offense

Indiana Women's Prison (IWP)													
Most Serious Offense	Murder	FA	FB	FC	FD	F1	F2	F3	F4	F5	F6	HO	Total
Murder	69	69
Neglect Of A Dependent	.	.	3	3	.	.	6
Neglect Of A Dependent Resulting in Serious Injury	14	14
Neglect Of Dependent Resulting In Death	.	11	.	.	.	8	19
Non Support Of Dependent Child	.	.	.	2	2
Operate Vehicle After Suspended For Life	5	.	.	5
Operating Vehicle Intoxicated Resulting in Death	.	.	1	3	1	.	.	5
Operating Vehicle Intoxicated Resulting in Serious Bodily Injury	1	.	.	1
Operating Vehicle Intoxicated-Prior Conviction	3	.	3
Opererating Vehicle While Intoxicated - Prior Conviction	5	.	5
Possess Chemical Reagents Or Precursors	.	.	.	1	1
Possession Of A Controlled Substance	1	1	.	2
Possession Of Cocaine Or Narcotic Drug	.	.	2	.	1	.	.	2	1	3	6	.	15
Possession Of Methamphetamine	.	.	1	3	10	18	17	.	49
Possession Of Syringes Or Needles	1	4	.	5
Possession Or Use Of Legend Drug	1	.	1
Promoting Prostitution Under Age 18	.	.	1	1
Reckless Homicide	2	.	.	2
Residential Entry	1	.	1
Resisting Law Enforcement	2	.	2
Robbery	.	4	7	1	.	.	8	26	.	6	.	.	52
Sexual Misconduct With A Minor	1	.	.	1
Stalking	1	.	.	1
Theft,Receiving Stolen Property	2	1	12	.	15
Trafficking With An Inmate	5	.	.	5
Unlawful Firearm Poss By Serious Felon	.	.	1	3	.	.	.	4
Voluntary Manslaughter	.	8	1	.	.	.	5	14
Welfare Fraud	.	.	.	1	1
Total	69	61	62	12	6	15	62	92	83	151	76	0	689

INDIANA DEPARTMENT OF CORRECTION
ADULT OFFENDERS
by Most Serious Offense

Madison Correctional Facility (MCU)													
Most Serious Offense	Murder	FA	FB	FC	FD	F1	F2	F3	F4	F5	F6	HO	Total
Aiding Inducing/Causing An Offense	.	1	3	4	6	8	.	.	22
Arson	4	.	.	.	4
Assisting A Criminal	1	.	.	1
Attempt To Commit Felony	.	4	1	2	4	.	.	11
Battery	.	.	1	1	.	12	.	.	14
Bribery	1	.	.	1
Burglary	.	1	11	1	.	.	1	.	41	12	.	.	67
Check Fraud	1	.	1
Conspiracy	.	2	7	.	.	.	4	3	1	5	.	.	22
Corrupt Business Influence	.	.	.	1	3	.	.	4
Dealing In Cocaine Or Narcotic Drug	.	5	3	.	.	.	7	15	22	20	.	.	72
Dealing In Methamphetamine	.	11	19	.	.	.	33	39	49	33	.	.	184
Dealing In Schedule I, II, or III Controlled Substance	.	3	26	.	.	.	2	6	5	3	.	.	45
Dealing Possessing Look-Alike Substance	1	.	.	1
Fail To Return To Accident Resulting in Serious Injury	1	1
Forgery,Counterfeiting,Application Fraud	.	.	.	4	3	.	7
Fraud	3	.	3
Fraud On A Financial Institution	8	.	.	8
Handgun Violation	2	.	.	2
Identity Deception	1	.	.	1
Intimidation	1	.	.	1
Invasion Of Privacy	1	.	1
Maintaining Common Nuisance	2	.	2
Make False Sales Doc	1	.	1
Manufacture Methamphetamine	1	1
Murder	6	6
Neglect Of A Dependent	.	.	3	6	2	.	11
Neglect Of A Dependent Resulting in Serious Injury	4	4
Neglect Of Dependent Resulting In Death	.	2	2
Non Support Of Dependent Child	1	1	.	.	2
Obstruction Of Justice	1	.	1
Operate Vehicle After Suspended For Life	9	.	.	9
Operating Vehicle Intoxicated Resulting in Death	.	.	2	6	1	.	.	9
Operating Vehicle Intoxicated Resulting in Serious Bodily Injury	1	.	.	1
Operating Vehicle Intoxicated-Prior Conviction	2	.	2
Operating Vehicle-Habit Traffic Violator	1	.	1
Opererating Vehicle While Intoxicated - Prior Conviction	4	.	4
Possess of Precursors	1	.	.	1
Possession Of A Controlled Substance	1	.	1

INDIANA DEPARTMENT OF CORRECTION
ADULT OFFENDERS
by Most Serious Offense

Madison Correctional Facility (MCU)													
Most Serious Offense	Murder	FA	FB	FC	FD	F1	F2	F3	F4	F5	F6	HO	Total
Possession Of Cocaine Or Narcotic Drug	.	.	.	1	.	.	.	3	2	14	6	.	26
Possession Of Methamphetamine	19	24	34	22	.	99
Possession Of Syringes Or Needles	12	.	12
Possession Or Use Of Legend Drug	2	2	.	4
Reckless Homicide	1	.	.	1
Residential Entry	1	.	1
Robbery	.	1	2	.	.	.	1	8	.	3	.	.	15
Synthetic Identity Deception	2	.	2
Theft,Receiving Stolen Property	1	3	12	.	16
Trafficking With An Inmate	8	.	.	8
Unlawful Firearm Poss By Serious Felon	1	.	.	.	1
Voluntary Manslaughter	.	3	3
Welfare Fraud	.	.	.	1	1
	6	33	77	8	2	0	48	105	163	199	79	0	720

INDIANA DEPARTMENT OF CORRECTION
ADULT OFFENDERS
by Most Serious Offense

Miami Correctional Facility (MCF)													
Most Serious Offense	Murder	FA	FB	FC	FD	F1	F2	F3	F4	F5	F6	HO	Total
Accident Fail To Stop Resulting in Serious Injury or Death	.	.	1	3	.	.	4
Aggravated Battery	.	.	34	.	.	2	.	91	127
Aiding Inducing/Causing An Offense	.	6	5	.	.	3	7	11	2	3	.	.	37
Arson	.	3	7	14	.	.	.	24
Assisting A Criminal	1	.	.	1
Attempt To Commit Felony	.	56	15	.	.	40	12	23	1	5	.	.	152
Attempted Murder	1	1
Auto Theft, Receiving Stolen Auto Parts	.	.	.	2	3	6	.	11
Battery	.	2	5	8	.	.	.	4	3	49	4	.	75
Battery By Bodily Waste	.	.	1	1
Bribery	1	.	.	1
Burglary	.	42	144	15	.	6	50	13	90	35	.	.	395
Carjacking	.	.	5	5
Carrying Handgun Without License	.	.	.	1	1
Causing Suicide	.	.	1	1
Child Exploitation	.	.	.	1	1
Child Molesting	.	85	19	2	.	110	1	7	18	.	.	.	242
Child Possession of Firearm	1	.	.	1
Child Seduction	1	.	.	1
Conspiracy	.	15	10	.	.	1	18	6	.	5	.	.	55
Conversion	1	.	.	1
Corrupt Business Influence	3	.	.	3
Criminal Confinement	.	.	17	2	.	.	3	37	.	6	.	.	65
Criminal Deviate Conduct	.	3	2	5
Criminal Recklessness	.	.	.	1	4	.	.	5
Dealing In Cocaine Or Narcotic Drug	.	114	50	.	.	.	109	20	20	8	.	.	321
Dealing In Marijuana, Hash, or Hash Oil	4	.	.	4
Dealing In Methamphetamine	.	37	44	.	.	.	174	32	37	14	.	.	338
Dealing In Schedule I, II, or III Controlled Substance	.	13	33	.	.	.	7	1	.	1	.	.	55
Dealing In Schedule IV Controlled Substance	.	.	.	1	1
Dealing Possessing Look-Alike Substance	.	.	.	1	1
Domestic Battery	15	3	.	18
Domestic Battery Resulting in Death Under 14	1	1
Domestic Battery with Serious Bodily Injury Under Age 14	1	1
Escape	10	4	.	14

INDIANA DEPARTMENT OF CORRECTION
ADULT OFFENDERS
by Most Serious Offense

Miami Correctional Facility (MCF)													
Most Serious Offense	Murder	FA	FB	FC	FD	F1	F2	F3	F4	F5	F6	HO	Total
Fail To Return To Accident Resulting in Serious Injury	1	1
Fail To Stop After Accident - Operating Vehicle Intoxicated	.	.	1	1
Failure To Register As A Sex Offender	.	.	.	1	7	.	.	8
Failure To Return Lawful Detention/Escape	.	.	2	4	6
Forgery,Counterfeiting,Application Fraud	.	.	.	4	4
Fraud	1	1
Fraud On A Financial Institution	3	.	.	3
Handgun Violation	.	.	.	1	24	.	.	25
Identity Deception	1	1
Incest	.	.	1	1
Intimidation	.	.	.	1	6	.	.	7
Kidnapping	.	9	5	6	.	1	.	.	21
Murder	269	269
Neglect Of A Dependent	.	.	3	1	1	.	.	5
Neglect Of A Dependent Resulting in Serious Injury	10	10
Neglect Of Dependent Resulting In Death	.	7	.	.	.	9	16
Non Support Of Dependent Child	.	.	.	2	3	1	.	6
Obliterating Handgun I.D.	1	.	.	1
Operate Vehicle After Suspended For Life	.	.	.	1	17	.	.	18
Operating Vehicle Intoxicated Resulting in Death	.	.	4	1	4	1	.	.	10
Operating Vehicle Intoxicated-Prior Conviction	2	.	2
Operating Vehicle-Habit Traffic Violator	1	3	.	4
Opererating Vehicle While Intoxicated - Prior Conviction	3	.	3
Possess Chemical Reagents Or Precursors	.	.	.	1	1
Possess Destructive Device Or Explosive	3	3
Possess Of Precursors	1	1	.	2
Possession Of A Controlled Substance	1	1
Possession Of Cocaine Or Narcotic Drug	.	3	6	2	.	.	.	10	5	3	2	.	31
Possession Of Dangerous Device	3	2	.	.	5
Possession Of Marijuana, Hash, Hash Oil	1	1
Possession Of Methamphetamine	.	.	5	11	14	14	10	.	54
Possession Of Syringes Or Needles	1	.	1
Rape	.	12	3	.	.	19	.	11	45
Reckless Homicide	5	.	.	5
Resisting Law Enforcement	.	.	2	3	.	1	3	.	9

INDIANA DEPARTMENT OF CORRECTION
ADULT OFFENDERS
by Most Serious Offense

Miami Correctional Facility (MCF)													
Most Serious Offense	Murder	FA	FB	FC	FD	F1	F2	F3	F4	F5	F6	HO	Total
Robbery	.	35	126	5	.	.	29	186	.	16	.	.	397
Sexual Misconduct With A Minor	.	.	5	4	2	.	.	11
Stalking	.	.	1	1	1	.	.	3
Strangulation	1	.	1
Theft,Receiving Stolen Property	2	4	.	6
Trafficking With An Inmate	4	.	.	4
Unlawful Firearm Poss By Serious Felon	.	.	32	61	.	.	.	93
Vicarious Sexual Gratification	1	.	.	.	1
Voluntary Manslaughter	.	35	4	.	.	.	35	74
Welfare Fraud	1	1
Total	269	477	588	59	7	191	454	484	277	287	48	0	3141

INDIANA DEPARTMENT OF CORRECTION
ADULT OFFENDERS
by Most Serious Offense

New Castle Correctional Facility (NCF)													
Most Serious Offense	Murder	FA	FB	FC	FD	F1	F2	F3	F4	F5	F6	HO	Total
Accident Fail To Stop Resulting in Serious Injury or Death	2	.	.	2
Aggravated Battery	.	.	6	.	.	1	.	10	17
Aiding Inducing/Causing An Offense	.	3	2	.	.	.	1	1	1	1	.	.	9
Arson	.	1	5	6	.	.	.	12
Attempt To Commit Felony	.	45	27	2	.	3	1	8	5	5	.	.	96
Auto Theft, Receiving Stolen Auto Parts	1	4	.	5
Battery	.	3	3	6	.	.	.	2	.	29	2	.	45
Bribery	1	.	.	1
Burglary	.	20	44	4	.	1	10	2	36	17	.	.	134
Carjacking	.	.	1	1
Check Fraud	.	.	.	1	1
Child Exploitation	.	.	.	6	12	29	1	.	48
Child Molesting	.	607	272	86	.	23	4	110	269	.	.	.	1371
Child Seduction	.	.	.	2	5	.	.	7
Child Solicitation	.	.	1	4	1	.	.	.	16	25	.	.	47
Conspiracy	.	4	6	1	.	.	.	5	.	3	.	.	19
Corrupt Business Influence	.	.	.	1	2	.	.	3
Criminal Confinement	.	.	12	1	.	.	.	6	.	12	.	.	31
Criminal Deviate Conduct	.	50	55	105
Criminal Recklessness	3	.	.	3
Dangerous Control Of A Handgun	1	.	.	1
Dealing In Cocaine Or Narcotic Drug	.	23	14	.	.	.	3	2	16	10	.	.	68
Dealing In Marijuana, Hash, or Hash Oil	1	.	1
Dealing In Methamphetamine	.	3	18	.	.	.	6	2	9	27	.	.	65
Dealing In Schedule I, II, or III Controlled Substance	.	2	11	1	14
Dealing Possessing Look-Alike Substance	.	.	.	1	2	.	.	3
Dissemination Of Matter Harmful To Minor	2	.	2
Domestic Battery	2	1	.	3
Escape	2	2	.	4
Failure To Register As A Sex Offender	.	.	.	1	15	.	.	16
Forgery,Counterfeiting,Application Fraud	.	.	.	6	2	.	8
Fraud On A Financial Institution	2	.	.	2
Handgun Violation	13	.	.	13
Home Improvement Fraud Offenses	.	.	.	1	1
Human Sexual Trafficking	2	2
Incest	.	.	17	3	3	4	.	.	27
Intimidation	.	.	.	2	1	2	.	.	5
Kidnapping	.	10	1	1	.	2	.	.	14
Murder	83	83

INDIANA DEPARTMENT OF CORRECTION
ADULT OFFENDERS
by Most Serious Offense

New Castle Correctional Facility (NCF)													
Most Serious Offense	Murder	FA	FB	FC	FD	F1	F2	F3	F4	F5	F6	HO	Total
Neglect Of A Dependent	.	.	.	1	1	.	.	2
Neglect Of A Dependent Resulting in Serious Injury	1	1
Neglect Of Dependent Resulting In Death	1	1
Non Support Of Dependent Child	.	.	.	2	1	1	.	4
Obstruction Of Justice	1	.	.	1
Operate Vehicle After Suspended For Life	11	.	.	11
Operating Vehicle Intoxicated	0
Operating Vehicle Intoxicated Resulting in Death	.	.	1	2	1	.	.	4
Operating Vehicle Intoxicated-Prior Conviction	1	.	1
Opererating Vehicle While Intoxicated - Prior Conviction	5	.	5
Possession Of A Machine Gun Or Bomb	1	.	.	1
Possession Of Child Pornography	20	1	.	21
Possession Of Cocaine Or Narcotic Drug	.	1	2	1	.	4	3	.	11
Possession Of Methamphetamine	.	.	1	2	2	15	5	.	25
Possession Of Syringes Or Needles	3	.	3
Promoting Prostitution Under Age 18	.	.	1	1
Rape	.	76	88	.	.	3	.	98	265
Robbery	.	11	39	2	.	.	6	33	.	14	.	.	105
Sexual Battery	.	.	.	1	2	.	.	.	9	.	1	.	13
Sexual Misconduct With A Minor	.	2	126	24	113	67	.	.	332
Sexual Misconduct w/ Service Provider	1	.	.	1
Stalking	1	.	.	1
Theft,Receiving Stolen Property	3	13	.	16
Trafficking With An Inmate	1	.	.	1
Unlawful Firearm Poss By Serious Felon	.	.	14	10	.	.	.	24
Vicarious Sexual Gratification	.	.	3	1	4	1	.	.	9
Voluntary Manslaughter	.	7	1	.	.	.	1	9
Total	83	868	770	158	5	32	33	288	513	359	48	0	3157

INDIANA DEPARTMENT OF CORRECTION
ADULT OFFENDERS
by Most Serious Offense

Pendleton Correctional Facility (ISR)													
Most Serious Offense	Murder	FA	FB	FC	FD	F1	F2	F3	F4	F5	F6	HO	Total
Accident Fail To Stop Resulting in Serious Injury or Death	1	.	.	1
Aggravated Battery	.	.	12	22	34
Aiding Inducing/Causing An Offense	.	3	1	.	.	3	.	.	.	2	.	.	9
Arson	.	3	4	3	.	.	.	10
Assisting A Criminal	1	.	.	1
Attempt To Commit Felony	.	61	7	1	.	23	3	3	.	2	.	.	100
Auto Theft, Receiving Stolen Auto Parts	1	.	.	1
Battery	.	1	1	3	.	.	1	2	.	21	3	.	32
Burglary	.	31	61	6	.	6	9	4	28	16	.	.	161
Carjacking	.	.	3	3
Check Deception	1	.	.	1
Child Molesting	.	194	7	.	.	48	.	3	2	.	.	.	254
Child Possession of Firearm	1	.	.	1
Conspiracy	.	7	1	.	.	1	2	2	13
Criminal Confinement	.	.	17	1	.	.	2	4	.	3	.	.	27
Criminal Deviate Conduct	.	31	1	32
Criminal Recklessness	.	.	.	1	1	2	.	4
Dealing In Cocaine Or Narcotic Drug	.	52	12	.	.	.	17	4	9	7	.	.	101
Dealing In Marijuana, Hash, or Hash Oil	1	.	.	1
Dealing In Methamphetamine	.	15	13	.	.	.	15	5	10	7	.	.	65
Dealing In Schedule I, II, or III Controlled Substance	.	3	9	1	.	.	.	13
Dealing In Schedule IV Controlled Substance	1	1
Dealing Possessing Look-Alike Substance	1	.	.	1
Disarming A Law Enforcement Officer	1	.	.	1
Domestic Battery	2	1	.	3
Escape	2	1	.	3
Fail To Return To Accident Resulting in Serious Injury	1	1
Failure To Appear	1	.	1
Failure To Register As A Sex Offender	6	.	.	6
Forgery,Counterfeiting,Application Fraud	.	.	.	2	1	.	3
Fraud On A Financial Institution	.	.	.	1	2	.	.	3
Handgun Violation	16	.	.	16
Human Sexual Trafficking	1	1
Incest	1	.	.	.	1

INDIANA DEPARTMENT OF CORRECTION
ADULT OFFENDERS
by Most Serious Offense

Pendleton Correctional Facility (ISR)													
Most Serious Offense	Murder	FA	FB	FC	FD	F1	F2	F3	F4	F5	F6	HO	Total
Intimidation	6	.	.	6
Invasion Of Privacy	1	.	1
Kidnapping	.	11	1	1	13
Maintaining Common Nuisance	2	.	2
Manufacture Methamphetamine	1	1	.	.	.	2
Murder	532	532
Neglect Of A Dependent	.	.	1	1
Neglect Of A Dependent Resulting in Serious Injury	1	1
Neglect Of Dependent Resulting In Death	.	4	.	.	.	3	7
Obliterating Handgun I.D.	1	.	.	1
Operate Vehicle After Suspended For Life	9	.	.	9
Operating Vehicle Intoxicated Resulting in Death	.	.	1	3	.	.	.	4
Opererating Vehicle While Intoxicated - Prior Conviction	1	.	1
Perjury	1	.	1
Possession Of Cocaine Or Narcotic Drug	.	.	2	2	1	2	4	.	11
Possession Of Dangerous Device	2	1	.	.	3
Possession Of Methamphetamine	.	.	4	4	3	10	4	.	25
Possession Of Syringes Or Needles	1	1	.	2
Prisoner Poss. Dangerous Device/Material	.	.	2	2
Rape	.	41	4	.	.	13	.	5	63
Resisting Law Enforcement	.	.	1	.	.	.	1	2	4
Robbery	.	31	60	2	.	.	18	42	.	6	.	.	159
Sexual Misconduct With A Minor	.	.	9	1	1	.	.	11
Stalking	2	1	1	.	4
Theft,Receiving Stolen Property	.	.	.	1	1	1	3	.	6
Trafficking With An Inmate	.	.	.	1	1	.	.	2
Unlawful Firearm Poss By Serious Felon	.	.	17	12	.	.	.	29
Voluntary Manslaughter	.	28	3	.	.	.	12	43
Total	532	516	253	19	1	97	82	109	79	135	27	0	1850

INDIANA DEPARTMENT OF CORRECTION
ADULT OFFENDERS
by Most Serious Offense

Plainfield Correctional Facility (IYC)													
Most Serious Offense	Murder	FA	FB	FC	FD	F1	F2	F3	F4	F5	F6	HO	Total
Accident Fail To Stop Resulting in Serious Injury or Death	2	.	.	2
Aggravated Battery	.	.	7	21	28
Aiding Inducing/Causing An Offense	.	3	3	1	2	5	1	.	15
Arson	.	1	1	6	.	.	.	8
Assisting A Criminal	1	.	.	1
Attempt To Commit Felony	.	25	5	6	2	6	.	.	44
Auto Theft, Receiving Stolen Auto Parts	3	1	.	4
Battery	.	2	2	9	1	.	.	4	1	54	5	.	78
Burglary	.	9	69	11	.	.	6	3	63	45	.	.	206
Carjacking	.	.	3	3
Check Deception	1	.	1
Check Fraud	1	.	.	1
Child Exploitation	1	1
Child Molesting	.	7	7	1	3	.	.	.	18
Conspiracy	.	9	2	.	.	.	3	1	1	8	1	.	25
Corrupt Business Influence	.	.	.	1	1	.	.	2
Criminal Confinement	.	.	13	1	.	.	.	7	.	10	1	.	32
Criminal Deviate Conduct	.	2	3	5
Criminal Gang Activity	1	1
Criminal Recklessness	.	.	.	2	3	.	.	5
Dealing In Cocaine Or Narcotic Drug	.	34	42	.	.	.	14	17	15	14	.	.	136
Dealing In Marijuana, Hash, or Hash Oil	1	.	.	1
Dealing In Methamphetamine	.	5	30	.	.	.	18	15	25	20	.	.	113
Dealing In Schedule I, II, or III Controlled Substance	.	1	27	.	.	.	2	3	2	1	.	.	36
Dealing In Schedule IV Controlled Substance	2	2
Dealing Possessing Look-Alike Substance	.	.	.	1	2	.	3
Dealing Substance Represented To Be Controlled Substance	1	1
Disarming A Law Enforcement Officer	.	.	.	1	1
Domestic Battery	21	9	.	30
Domestic Battery with Serious Bodily Injury Under Age 14	2	2
Driving After Forfeiture	.	.	.	1	1
Escape	10	13	.	23

INDIANA DEPARTMENT OF CORRECTION
ADULT OFFENDERS
by Most Serious Offense

Plainfield Correctional Facility (IYC)													
Most Serious Offense	Murder	FA	FB	FC	FD	F1	F2	F3	F4	F5	F6	HO	Total
Fail To Return To Accident Resulting in Serious Injury	2	2
Failure To Register As A Sex Offender	.	.	.	2	20	2	.	24
Failure To Return Lawful Detention/Escape	.	.	.	2	2
Forgery,Counterfeiting,Application Fraud	.	.	.	8	1	.	9
Fraud	3	.	3
Fraud On A Financial Institution	.	.	.	3	5	.	.	8
Habitual Vehicular Subst Offender	1	1
Handgun Violation	.	.	.	1	29	.	.	30
Incest	.	.	1	1
Intimidation	.	.	.	1	14	4	.	19
Invasion Of Privacy	1	.	1
Kidnapping	.	2	2	.	.	4
Maintaining Common Nuisance	1	.	1
Murder	62	62
Neglect Of A Dependent	.	.	1	1
Neglect Of A Dependent Resulting in Serious Injury	3	3
Neglect Of Dependent Resulting In Death	.	1	1
Non Support Of Dependent Child	.	.	.	2	2	1	.	5
Obstruction Of Justice	1	.	.	1
Operate Vehicle After Suspended For Life	.	.	.	1	27	.	.	28
Operating Vehicle Intoxicated Resulting in Death	4	1	.	.	5
Operating Vehicle Intoxicated Resulting in Serious Bodily Injury	2	1	.	3
Operating Vehicle Intoxicated-Prior Conviction	1	.	1
Operating Vehicle-Habit Traffic Violator	1	2	.	3
Opererating Vehicle While Intoxicated - Prior Conviction	6	.	6
Pharmacy Robbery	1	.	.	.	1
Possess Destructive Device Or Explosive	1	1
Possession Of Cocaine Or Narcotic Drug	.	3	4	2	.	.	.	5	6	10	3	.	33
Possession Of Dangerous Device	1	.	.	.	1
Possession Of Methamphetamine	.	.	3	2	.	.	.	14	15	23	22	.	79
Possession Of Syringes Or Needles	11	.	11
Possession Or Use Of Legend Drug	1	.	.	1

INDIANA DEPARTMENT OF CORRECTION
ADULT OFFENDERS
by Most Serious Offense

Plainfield Correctional Facility (IYC)													
Most Serious Offense	Murder	FA	FB	FC	FD	F1	F2	F3	F4	F5	F6	HO	Total
Prisoner Poss. Dangerous Device/Material	.	.	1	1
Promoting Prostitution	2	.	.	2
Rape	.	5	5
Reckless Homicide	4	.	.	4
Residential Entry	4	.	4
Resisting Law Enforcement	.	.	.	1	.	.	.	2	.	.	5	.	8
Robbery	.	6	45	4	.	.	3	65	.	26	.	.	149
Sexual Misconduct With A Minor	.	1	2	2	2	.	.	7
Stalking	.	.	2	7	.	.	9
Theft,Receiving Stolen Property	3	3	12	.	18
Trafficking With An Inmate	.	.	.	1	1	.	.	2
Unlawful Firearm Poss By Serious Felon	.	.	21	65	.	.	.	86
Voluntary Manslaughter	.	13	2	.	.	.	4	19
Total	62	129	296	58	8	0	51	173	214	388	114	1	1494

INDIANA DEPARTMENT OF CORRECTION
ADULT OFFENDERS
by Most Serious Offense

Putnamville Correctional Facility (ISF)													
Most Serious Offense	Murder	FA	FB	FC	FD	F1	F2	F3	F4	F5	F6	HO	Total
Aggravated Battery	.	.	9	29	38
Aiding Inducing/Causing An Offense	.	1	5	.	.	.	3	2	.	2	.	.	13
Arson	.	.	4	1	15	.	.	.	20
Assisting A Criminal	.	.	.	1	3	.	.	4
Attempt To Commit Felony	.	19	8	9	.	9	1	.	46
Auto Theft, Receiving Stolen Auto Parts	.	.	.	1	4	9	.	14
Battery	.	.	1	2	.	.	.	3	.	84	6	.	96
Battery To A Child Causing Death	.	1	1
Burglary	.	15	89	15	.	.	7	3	134	89	.	.	352
Carjacking	.	.	3	3
Child Exploitation	1	.	.	1
Child Molesting	.	4	8	1	.	.	.	1	1	.	.	.	15
Child Possession of Firearm	3	.	.	3
Conspiracy	.	6	8	2	.	.	6	5	3	4	.	.	34
Controlled Substance Registration	2	.	2
Conversion	1	.	.	1
Corrupt Business Influence	3	.	.	3
Criminal Confinement	.	.	12	2	.	.	.	12	.	13	1	.	40
Criminal Deviate Conduct	.	1	2	3
Criminal Recklessness	.	.	.	1	1	5	5	.	12
Dealing In Cocaine Or Narcotic Drug	.	23	59	.	.	.	36	24	26	26	.	.	194
Dealing In Marijuana, Hash, or Hash Oil	.	.	.	2	3	1	.	6
Dealing In Methamphetamine	.	5	33	.	.	.	25	50	58	37	.	.	208
Dealing In Schedule I, II, or III Controlled Substance	.	3	25	.	.	.	1	.	1	3	.	.	33
Dealing In Schedule IV Controlled Substance	.	.	1	1	1	.	.	.	3
Dealing Possessing Look-Alike Substance	2	2	.	4
Disarming A Law Enforcement Officer	1	1
Domestic Battery	27	5	.	32
Escape	1	19	24	.	44
Fail To Return To Accident Resulting in Serious Injury	3	3
Fail To Stop After Accident - Operating Vehicle Intoxicated	.	.	2	2
Failure To Appear	1	.	1
Failure To Register As A Sex Offender	25	3	.	28
Failure To Return Lawful Detention/Escape	.	.	.	1	1
Forgery,Counterfeiting,Application Fraud	.	.	.	7	5	.	12

INDIANA DEPARTMENT OF CORRECTION
ADULT OFFENDERS
by Most Serious Offense

Putnamville Correctional Facility (ISF)													
Most Serious Offense	Murder	FA	FB	FC	FD	F1	F2	F3	F4	F5	F6	HO	Total
Fraud	2	.	2
Fraud On A Financial Institution	14	.	.	14
Handgun Violation	40	.	.	40
Human Sexual Trafficking	.	.	1	1
Identity Deception	1	.	1
Impersonating A Public Servant	1	.	1
Incest	1	.	.	1
Intimidation	.	.	.	2	1	20	5	.	28
Invasion Of Privacy	1	.	1
Involuntary Manslaughter	1	.	.	1
Kidnapping	.	4	3	.	4	1	.	12
Maintaining Common Nuisance	4	.	4
Murder	57	57
Neglect Of A Dependent	.	.	1	4	1	.	6
Neglect Of A Dependent Resulting in Serious Injury	4	4
Neglect Of Dependent Resulting In Death	.	1	1
Non Support Of Dependent Child	.	.	.	9	2	1	2	.	14
Obliterating Handgun I.D.	1	.	.	1
Obstruction Of Justice	2	1	.	3
Operate Vehicle After Suspended For Life	.	.	.	1	49	.	.	50
Operating Vehicle Intoxicated	1	.	.	1
Operating Vehicle Intoxicated Resulting in Death	.	.	3	7	3	.	.	13
Operating Vehicle Intoxicated Resulting in Serious Bodily Injury	.	.	.	1	3	.	.	4
Operating Vehicle Intoxicated-Prior Conviction	4	.	4
Operating Vehicle While Intoxicated - Endangering Person	1	1
Operating Vehicle With Schedule I,II in Body - Causing Death	1	.	.	.	1
Operating Vehicle-Habit Traffic Violator	1	.	1
Opererating Vehicle While Intoxicated - Prior Conviction	10	.	10
Possess Chemical Reagents Or Precursors	.	.	.	2	2
Possess Destructive Device Or Explosive	1	.	.	1
Possess Of Precursors	1	.	1
Possession Of A Controlled Substance	.	.	.	1	1	2
Possession Of Cocaine Or Narcotic Drug	.	1	4	1	1	.	.	5	11	14	8	.	45
Possession Of Marijuana, Hash, Hash Oil	1	.	1
Possession Of Methamphetamine	.	1	8	15	17	45	29	.	115

INDIANA DEPARTMENT OF CORRECTION
ADULT OFFENDERS
by Most Serious Offense

Putnamville Correctional Facility (ISF)													
Most Serious Offense	Murder	FA	FB	FC	FD	F1	F2	F3	F4	F5	F6	HO	Total
Possession Of Syringes Or Needles	7	.	7
Possession Or Use Of Legend Drug	4	.	4
Promoting Prostitution	2	.	.	2
Rape	.	2	2	4
Reckless Homicide	.	.	.	1	5	.	.	6
Residential Entry	6	.	6
Resisting Law Enforcement	1	.	2	9	.	12
Robbery	.	8	68	5	.	.	3	78	.	25	.	.	187
Sale Of Unregistered Security	.	.	.	1	1
Sex Predator Unlawful Job Near Children	1	.	.	1
Sexual Misconduct With A Minor	3	.	.	.	3
Stalking	2	5	1	.	8
Strangulation	1	4	.	5
Synthetic Identity Deception	1	.	1
Terroristic Mischief	1	.	.	1
Theft,Receiving Stolen Property	2	9	24	.	35
Trafficking With An Inmate	.	.	.	2	7	.	.	9
Unlawful Firearm Poss By Serious Felon	.	.	29	92	.	.	.	121
Voluntary Manslaughter	.	14	5	.	.	.	4	23
Total	57	109	390	61	9	0	85	250	373	625	194	0	2153

INDIANA DEPARTMENT OF CORRECTION
ADULT OFFENDERS
by Most Serious Offense

Reception Diagnostic Center (RDC)													
Most Serious Offense	Murder	FA	FB	FC	FD	F1	F2	F3	F4	F5	F6	HO	Total
Accident Fail To Stop Resulting in Serious Injury or Death	2	.	.	2
Aggravated Battery	.	.	1	.	.	2	.	10	13
Aiding Inducing/Causing An Offense	2	1	1	.	.	4
Arson	3	.	.	.	3
Attempt To Commit Felony	2	.	1	.	5	.	.	8
Auto Theft, Receiving Stolen Auto Parts	3	2	1	.	6
Battery	.	.	.	2	.	.	.	3	.	28	5	.	38
Bribery	2	.	.	2
Burglary	.	1	22	2	30	28	.	.	83
Carjacking	.	.	1	1
Child Molesting	.	4	4	5	.	7	.	3	7	.	.	.	30
Child Possession of Firearm	1	.	.	1
Child Solicitation	1	4	.	.	5
Conspiracy	.	.	1	2	1	1	.	.	5
Corrupt Business Influence	1	.	.	1
Criminal Confinement	3	.	3	.	.	6
Criminal Recklessness	1	5	.	6
Dealing In Cocaine Or Narcotic Drug	.	3	10	.	.	.	6	5	14	6	.	.	44
Dealing In Marijuana, Hash, or Hash Oil	3	1	.	4
Dealing In Methamphetamine	.	.	3	.	.	.	16	18	11	7	.	.	55
Dealing In Schedule I, II, or III Controlled Substance	.	.	1	1	.	.	.	2
Dealing In Schedule IV Controlled Substance	.	.	1	1
Dealing Possessing Look-Alike Substance	1	.	.	1
Disarming A Law Enforcement Officer	2	.	.	2
Domestic Battery	19	6	.	25
Domestic Battery with Serious Bodily Injury Under Age 14	1	1
Escape	5	4	.	9
Failure To Register As A Sex Offender	9	.	.	9
Failure To Return Lawful Detention/Escape	.	.	.	1	1
Forgery,Counterfeiting,Application Fraud	.	.	.	2	1	.	3
Fraud On A Financial Institution	2	.	.	2
Habitual Substance Offender	1	0
Handgun Violation	23	.	.	23
Identity Deception	1	.	1
Impersonating A Public Servant	1	.	1
Incest	1	.	.	1
Intimidation	1	10	3	.	14
Maintaining Common Nuisance	3	.	3

INDIANA DEPARTMENT OF CORRECTION
ADULT OFFENDERS
by Most Serious Offense

Reception Diagnostic Center (RDC)													
Most Serious Offense	Murder	FA	FB	FC	FD	F1	F2	F3	F4	F5	F6	HO	Total
Murder	7	7
Neglect Of A Dependent	1	.	.	1
Non Support Of Dependent Child	.	.	.	5	1	1	1	.	8
Obliterating Handgun I.D.	1	.	.	1
Operate Vehicle After Suspended For Life	.	.	.	1	14	.	.	15
Operating Vehicle Intoxicated	1	.	.	1
Operating Vehicle Intoxicated Resulting in Death	.	.	1	2	.	.	3
Operating Vehicle Intoxicated-Prior Conviction	1	.	1
Operating Vehicle While Intoxicated - Prior Conviction	1	.	.	1
Operating Vehicle-Habit Traffic Violator	1	.	1
Opererating Vehicle While Intoxicated - Prior Conviction	5	.	5
Possess Chemical Reagents Or Precursors	.	.	.	1	1
Possession Of A Controlled Substance	.	.	.	1	1
Possession Of Child Pornography	3	.	.	3
Possession Of Cocaine Or Narcotic Drug	.	.	1	1	.	5	3	.	10
Possession Of Dangerous Device	1	.	.	1
Possession Of Methamphetamine	.	.	2	1	1	.	.	4	7	23	11	.	49
Possession Of Syringes Or Needles	7	.	7
Possession Or Use Of Legend Drug	1	.	1
Public Indecency	1	.	1
Rape	.	.	1	.	.	1	.	3	5
Reckless Homicide	2	.	.	2
Resisting Law Enforcement	6	.	6
Robbery	.	1	13	1	.	.	2	29	.	9	.	.	55
Sexual Battery	1	.	.	.	1
Sexual Misconduct With A Minor	8	1	.	.	9
Stalking	1	.	.	1
Strangulation	1	.	1
Synthetic Identity Deception	2	.	2
Theft,Receiving Stolen Property	4	15	.	19
Unlawful Firearm Poss By Serious Felon	.	.	2	30	.	.	.	32
Voluntary Manslaughter	.	.	1	.	.	.	2	3
Total	7	9	65	22	6	12	26	85	115	237	86	1	671

INDIANA DEPARTMENT OF CORRECTION
ADULT OFFENDERS
by Most Serious Offense

Rockville Correctional Facility (RTC)													
Most Serious Offense	Murder	FA	FB	FC	FD	F1	F2	F3	F4	F5	F6	HO	Total
Aggravated Battery	.	.	2	.	.	1	.	13	16
Aiding Inducing/Causing An Offense	.	4	4	.	.	1	5	3	5	5	.	.	27
Arson	.	1	1	1	3	.	.	.	6
Assisting A Criminal	3	.	.	3
Attempt To Commit Felony	.	10	1	.	.	3	7	4	1	7	.	.	33
Auto Theft, Receiving Stolen Auto Parts	1	3	.	4
Battery	.	1	.	.	1	.	2	5	.	37	3	.	49
Burglary	.	3	11	3	.	1	4	4	42	14	.	.	82
Carjacking	.	.	2	2
Child Exploitation	1	.	.	1
Child Molesting	.	25	5	1	.	8	.	4	2	.	.	.	45
Child Seduction	1	.	.	1
Child Solicitation	3	.	.	3
Conspiracy	.	6	6	.	.	1	10	8	2	5	1	.	39
Controlled Substance Registration	1	.	.	1
Corrupt Business Influence	.	.	.	1	4	.	.	5
Criminal Confinement	.	.	1	.	.	.	1	2	4
Criminal Deviate Conduct	.	3	3
Criminal Recklessness	1	.	.	1
Dealing In Cocaine Or Narcotic Drug	.	13	11	.	.	.	11	9	17	15	.	.	76
Dealing In Marijuana, Hash, or Hash Oil	1	.	1
Dealing In Methamphetamine	.	10	13	.	.	.	58	43	49	22	.	.	195
Dealing In Schedule I, II, or III Controlled Substance	.	6	14	.	.	.	1	3	2	3	1	.	30
Dealing In Schedule IV Controlled Substance	.	.	1	1	.	.	2
Dealing Possessing Look-Alike Substance	1	5	.	.	6
Domestic Battery	7	3	.	10
Escape	8	19	.	27
Fail To Return To Accident Resulting in Serious Injury	1	1
Failure To Register As A Sex Offender	4	.	.	4
Firearm Within 1 Mile School Property Without License	.	.	.	1	1
Forgery,Counterfeiting,Application Fraud	.	.	.	6	6	.	12
Fraud	1	.	1
Fraud On A Financial Institution	7	.	.	7
Habitual Offender	1	.	1

INDIANA DEPARTMENT OF CORRECTION
ADULT OFFENDERS
by Most Serious Offense

Rockville Correctional Facility (RTC)													
Most Serious Offense	Murder	FA	FB	FC	FD	F1	F2	F3	F4	F5	F6	HO	Total
Handgun Violation	10	.	.	10
Human Sexual Trafficking	.	.	2	1	3
Identity Deception	1	.	1
Incest	.	.	1	1	1	.	.	3
Inmate Fraud	1	.	.	1
Intimidation	2	.	.	2
Involuntary Manslaughter	1	.	.	1
Kidnapping	1	.	1	.	.	2
Maintaining Common Nuisance	1	3	.	4
Manufacture Methamphetamine	1	.	.	.	1
Murder	52	52
Neglect Of A Dependent	.	.	4	1	2	.	.	7
Neglect Of A Dependent Resulting in Serious Injury	19	19
Neglect Of Dependent Resulting In Death	.	8	.	.	.	11	19
Non Support Of Dependent Child	1	.	.	1
Obstruction Of Justice	1	.	1
Operate Vehicle After Suspended For Life	.	.	.	2	4	.	.	6
Operating Vehicle Intoxicated Resulting in Death	.	.	1	3	.	.	.	4
Operating Vehicle Intoxicated-Prior Conviction	1	2	.	3
Operating Vehicle-Habit Traffic Violator	2	.	2
Opererating Vehicle While Intoxicated - Prior Conviction	3	.	3
Pharmacy Robbery	1	.	.	.	1
Pointing a Firearm	1	.	1
Possession Of A Controlled Substance	.	.	.	1	1
Possession Of Child Pornography	2	.	.	2
Possession Of Cocaine Or Narcotic Drug	.	.	1	2	1	8	12	.	24
Possession Of Methamphetamine	.	.	2	2	1	.	.	18	18	37	31	.	109
Possession Of Syringes Or Needles	3	14	.	17
Promoting Prostitution Under Age 18	.	.	1	1	.	.	.	2
Rape	2	2
Reckless Homicide	4	.	.	4
Residential Entry	1	.	1
Resisting Law Enforcement	1	.	.	2	.	3
Robbery	.	3	8	1	.	.	8	28	.	7	.	.	55
Sexual Misconduct With A Minor	.	.	4	12	3	.	.	19

INDIANA DEPARTMENT OF CORRECTION
ADULT OFFENDERS
by Most Serious Offense

Rockville Correctional Facility (RTC)													
Most Serious Offense	Murder	FA	FB	FC	FD	F1	F2	F3	F4	F5	F6	HO	Total
Strangulation	1	.	1
Theft,Receiving Stolen Property	3	7	18	.	28
Trafficking With An Inmate	10	.	.	10
Unlawful Firearm Poss By Serious Felon	.	.	1	6	.	.	.	7
Voluntary Manslaughter	.	9	1	.	.	.	14	24
Welfare Fraud	.	.	.	1	1
Total	52	102	97	20	9	26	122	172	167	258	131	0	1156

INDIANA DEPARTMENT OF CORRECTION
ADULT OFFENDERS
by Most Serious Offense

South Bend Community Re-Entry Center (SBW)													
Most Serious Offense	Murder	FA	FB	FC	FD	F1	F2	F3	F4	F5	F6	HO	Total
Accident Fail To Stop Resulting in Serious Injury or Death	1	.	.	1
Aggravated Battery	.	.	3	5	8
Aiding Inducing/Causing An Offense	.	.	2	2	2	.	.	6
Attempt To Commit Felony	.	4	1	1	6
Auto Theft, Receiving Stolen Auto Parts	2	.	2
Battery	.	.	2	1	.	1	.	.	4
Battery To A Child Causing Death	.	1	1
Burglary	.	2	8	1	9	3	.	.	23
Conspiracy	.	4	1	5
Corrupt Business Influence	1	.	.	1
Criminal Recklessness	1	.	.	1
Dealing In Cocaine Or Narcotic Drug	.	11	7	2	3	4	.	.	27
Dealing In Marijuana, Hash, or Hash Oil	1	.	.	1
Dealing In Methamphetamine	.	.	3	2	5	2	.	.	12
Dealing In Schedule I, II, or III Controlled Substance	.	1	1	2
Handgun Violation	3	.	.	3
Manufacture Methamphetamine	2	.	.	.	2
Murder	17	17
Neglect Of A Dependent Resulting in Serious Injury	1	1
Non Support Of Dependent Child	.	.	.	1	1
Operate Vehicle After Suspended For Life	6	.	.	6
Operating Vehicle Intoxicated Resulting in Death	.	.	1	1
Operating Vehicle Intoxicated Resulting in Serious Bodily Injury	1	.	1
Operating Vehicle Intoxicated-Prior Conviction	1	.	1
Operating Vehicle-Habit Traffic Violator	1	.	1
Opererating Vehicle While Intoxicated - Prior Conviction	2	.	2
Possession Of Cocaine Or Narcotic Drug	.	1	3	.	1	.	5
Possession Of Methamphetamine	.	.	.	1	.	.	.	1	.	3	2	.	7
Residential Entry	1	.	1
Robbery	.	.	7	1	.	.	.	3	.	3	.	.	14
Sale Of Unregistered Security	.	.	.	1	1
Synthetic Identity Deception	2	.	2
Theft,Receiving Stolen Property	4	.	4
Unlawful Firearm Poss By Serious Felon	.	.	3	2	.	.	.	5
Voluntary Manslaughter	.	4	1	5
Welfare Fraud	.	.	.	1	1
Total	17	28	40	6	0	0	0	16	26	31	17	0	181

INDIANA DEPARTMENT OF CORRECTION
ADULT OFFENDERS
by Most Serious Offense

Wabash Valley Correctional Facility (WVF)													
Most Serious Offense	Murder	FA	FB	FC	FD	F1	F2	F3	F4	F5	F6	HO*	Total
Aggravated Battery	.	.	16	.	.	4	.	19	39
Aiding Inducing/Causing An Offense	.	9	1	.	.	2	.	2	2	1	.	.	17
Arson	.	.	7	2	.	.	.	9
Assisting Suicide	1	.	.	1
Attempt To Commit Felony	.	76	6	.	.	13	1	7	2	5	.	.	110
Auto Theft, Receiving Stolen Auto Parts	2	1	.	3
Battery	.	4	2	4	.	.	2	.	.	20	2	.	34
Battery By Bodily Waste	1	1
Burglary	.	40	59	9	.	7	15	3	48	29	.	.	210
Carjacking	.	.	3	3
Child Exploitation	1	.	.	.	1
Child Molesting	.	233	15	.	.	63	.	2	3	.	.	.	316
Child Solicitation	.	.	.	1	1	.	.	2
Conspiracy	.	8	6	.	.	2	5	3	2	.	.	.	26
Contributing To The Delinquency Of Minor	1	.	1
Criminal Confinement	.	.	11	.	.	.	1	1	.	3	.	.	16
Criminal Deviate Conduct	.	21	5	26
Criminal Recklessness	3	.	.	3
Dealing In Cocaine Or Narcotic Drug	.	46	23	.	.	.	10	5	7	5	.	.	96
Dealing In Marijuana, Hash, or Hash Oil	2	1	.	3
Dealing In Methamphetamine	.	13	23	.	.	.	31	11	21	17	.	.	116
Dealing In Schedule I, II, or III Controlled Substance	.	4	7	.	.	.	3	.	1	1	.	.	16
Dealing Possessing Look-Alike Substance	1	.	.	1
Disarming A Law Enforcement Officer	1	.	.	1
Domestic Battery	3	1	.	4
Driving Whl/Suspended Resulting In Death	1	.	.	1
Escape	2	3	1	.	6
Fail To Return To Accident Resulting in Serious Injury	1	1
Failure To Register As A Sex Offender	6	.	.	6
Failure To Return Lawful Detention/Escape	.	.	1	1
Forgery,Counterfeiting,Application Fraud	.	.	.	1	1
Fraud On A Financial Institution	3	.	.	3
Gang Activity	1	.	1
Handgun Violation	10	.	.	10
Intimidation	6	.	.	6
Kidnapping	.	18	1	19

INDIANA DEPARTMENT OF CORRECTION
ADULT OFFENDERS
by Most Serious Offense

Wabash Valley Correctional Facility (WVF)													
Most Serious Offense	Murder	FA	FB	FC	FD	F1	F2	F3	F4	F5	F6	HO*	Total
Manufacture Methamphetamine	1	.	.	.	1
Murder	546	546
Neglect Of A Dependent	.	.	.	1	1
Neglect Of A Dependent Resulting in Serious Injury	4	4
Neglect Of Dependent Resulting In Death	.	9	9
Non Support Of Dependent Child	.	.	.	2	2
Obstruction Of Justice	1	.	.	1
Operate Vehicle After Suspended For Life	9	.	.	9
Operating Vehicle Intoxicated	1	.	.	1
Operating Vehicle Intoxicated Resulting in Death	.	.	5	3	3	.	.	11
Operating Vehicle Intoxicated Resulting in Serious Bodily Injury	1	.	.	1
Opererating Vehicle While Intoxicated - Prior Conviction	2	.	2
Possess Destructive Device Or Explosive	1	1
Possession Of Cocaine Or Narcotic Drug	.	3	1	1	6	1	.	12
Possession Of Dangerous Device	1	2	.	.	3
Possession Of Methamphetamine	.	.	1	2	5	12	5	.	25
Prisoner Poss. Dangerous Device/Material	.	.	1	1
Promoting Prostitution	1	.	.	1
Rape	.	49	8	.	.	11	.	6	74
Reckless Homicide	.	.	.	1	1	.	.	2
Removing, Damaging, Or Altering a VIN	.	.	.	1	1
Resisting Law Enforcement	.	.	1	2	.	3
Robbery	.	37	62	.	.	.	6	41	.	10	.	.	156
Sexual Misconduct With A Minor	.	.	8	1	.	.	.	9
Strangulation	1	.	1
Theft,Receiving Stolen Property	1	8	.	9
Unlawful Firearm Poss By Serious Felon	.	.	15	22	.	.	.	37
Voluntary Manslaughter	.	40	2	.	.	.	9	51
Welfare Fraud	1	1
Total	546	610	289	20	2	102	85	107	125	172	27	0	2085

INDIANA DEPARTMENT OF CORRECTION
ADULT OFFENDERS
by Most Serious Offense

Westville Correctional Facility (WCC)													
Most Serious Offense	Murder	FA	FB	FC	FD	F1	F2	F3	F4	F5	F6	HO*	Total
Accident Fail To Stop Resulting in Serious Injury or Death	5	.	.	5
Aggravated Battery	.	.	15	41	56
Aiding Inducing/Causing An Offense	.	4	5	12	6	11	2	.	40
Arson	.	2	11	14	.	.	.	27
Assisting A Criminal	.	.	.	2	1	.	.	3
Attempt To Commit Felony	.	43	7	2	.	1	4	19	4	13	1	.	94
Auto Theft, Receiving Stolen Auto Parts	.	.	.	2	1	4	3	.	10
Battery	.	2	9	9	.	.	.	10	.	111	9	.	150
Battery To A Child Causing Death	.	1	1
Bribery	1	.	.	1
Burglary	.	13	112	19	.	.	8	3	170	114	.	.	439
Carjacking	.	.	3	3
Carrying Handgun Without License	.	.	.	2	2
Check Fraud	1	1	.	2
Child Molesting	.	9	8	5	.	.	.	1	3	.	.	.	26
Child Possession of Firearm	1	.	.	1
Child Solicitation	1	.	.	1
Conspiracy	.	7	3	1	.	.	.	4	6	5	.	.	26
Corrupt Business Influence	.	.	.	3	9	.	.	12
Criminal Confinement	.	.	8	2	.	.	.	10	.	16	1	.	37
Criminal Deviate Conduct	.	2	2	4
Criminal Recklessness	.	.	.	2	1	8	3	.	14
Criminal Trespass	1	.	1
Dealing In Cocaine Or Narcotic Drug	.	97	59	.	.	.	15	47	46	32	.	.	296
Dealing In Marijuana, Hash, or Hash Oil	4	1	.	5
Dealing In Methamphetamine	.	17	68	.	.	.	32	46	79	59	.	.	301
Dealing In Schedule I, II, or III Controlled Substance	.	11	20	.	.	.	3	3	4	2	.	.	43
Dealing In Schedule IV Controlled Substance	.	.	.	1	.	.	.	3	1	.	.	.	5
Dealing Possessing Look-Alike Substance	4	5	.	9
Disarming A Law Enforcement Officer	7	.	.	7
Domestic Battery	62	16	.	78
Domestic Battery with Serious Bodily Injury Under Age 14	1	1
Escape	21	12	.	33
Fail To Return To Accident Resulting in Serious Injury	5	5
Fail To Stop After Accident - Operating Vehicle Intoxicated	.	.	2	2

INDIANA DEPARTMENT OF CORRECTION
ADULT OFFENDERS
by Most Serious Offense

Westville Correctional Facility (WCC)													
Most Serious Offense	Murder	FA	FB	FC	FD	F1	F2	F3	F4	F5	F6	HO*	Total
Failure Of Sex Offender To Possess Id	1	1
Failure To Appear	1	.	1
Failure To Register As A Sex Offender	.	.	.	2	52	1	.	55
Failure To Return Lawful Detention/Escape	.	.	2	2	4
Firearm Within 1 Mile School Property Without License	.	.	.	3	3
Forgery,Counterfeiting,Application Fraud	.	.	.	12	2	.	14
Fraud	4	.	4
Fraud On A Financial Institution	.	.	.	2	10	.	.	12
Habitual Substance Offender	2	0
Handgun Violation	62	.	.	62
Identity Deception	1	1
Intimidation	.	.	.	1	20	7	.	28
Invasion Of Privacy	5	.	5
Involuntary Manslaughter	1	.	.	1
Kidnapping	.	4	3	.	1	.	.	8
Manufacture Methamphetamine	1	4	.	.	.	5
Murder	88	88
Neglect Of A Dependent	.	.	2	3	2	.	7
Neglect Of A Dependent Resulting in Serious Injury	5	5
Neglect Of Dependent Resulting In Death	.	4	4
Non Support Of Dependent Child	.	.	.	13	1	3	.	.	17
Obliterating Handgun I.D.	1	.	.	1
Obstruction Of Justice	1	2	1	.	4
Operate Vehicle After Suspended For Life	.	.	.	4	78	.	.	82
Operating Vehicle Intoxicated Resulting in Death	.	.	2	17	3	.	.	22
Operating Vehicle Intoxicated Resulting in Serious Bodily Injury	1	2	.	3
Operating Vehicle Intoxicated-Prior Conviction	1	4	.	5
Operating Vehicle-Habit Traffic Violator	9	.	9
Opererating Vehicle While Intoxicated - Prior Conviction	6	.	6
Possess Chemical Reagents Or Precursors	.	.	.	1	1
Possession Of A Controlled Substance	3	1	.	4
Possession Of Cocaine Or Narcotic Drug	.	8	5	4	1	.	.	8	13	19	16	.	74
Possession Of Dangerous Device	1	.	.	.	1
Possession Of Methamphetamine	.	1	4	2	.	.	.	18	29	70	28	.	152
Possession Of Syringes Or Needles	15	.	15

INDIANA DEPARTMENT OF CORRECTION
ADULT OFFENDERS
by Most Serious Offense

Westville Correctional Facility (WCC)													
Most Serious Offense	Murder	FA	FB	FC	FD	F1	F2	F3	F4	F5	F6	HO*	Total
Possession Or Use Of Legend Drug	2	.	2
Prisoner Poss. Dangerous Device/Material	.	.	2	2
Promoting Prostitution	2	.	.	2
Rape	.	7	1	8
Reckless Homicide	.	.	.	1	2	.	.	3
Residential Entry	1	2	.	3
Resisting Law Enforcement	1	.	.	1	.	3	13	.	18
Robbery	.	25	92	12	.	.	4	122	.	71	.	.	326
Sexual Misconduct With A Minor	.	.	3	4	2	.	.	9
Stalking	.	.	1	1	2	7	.	.	11
Strangulation	1	1	.	2
Theft,Receiving Stolen Property	.	.	.	1	5	3	23	.	32
Trafficking With An Inmate	.	.	.	2	1	.	.	3
Unlawful Entry by Sex Offender	1	.	1
Unlawful Firearm Poss By Serious Felon	.	.	17	82	.	.	.	99
Voluntary Manslaughter	.	30	6	.	.	.	2	38
Total	88	287	469	113	19	1	68	363	485	909	201	2	3005