

PROJECT	DESIGNATION
2200992	2200992
CONTRACT	
R-45552	

CULVERT ASSETS	
Des. No.	Culvert Asset ID
2200992	CV 058-047-081.33

INDIANA DEPARTMENT OF TRANSPORTATION



ROAD PLANS

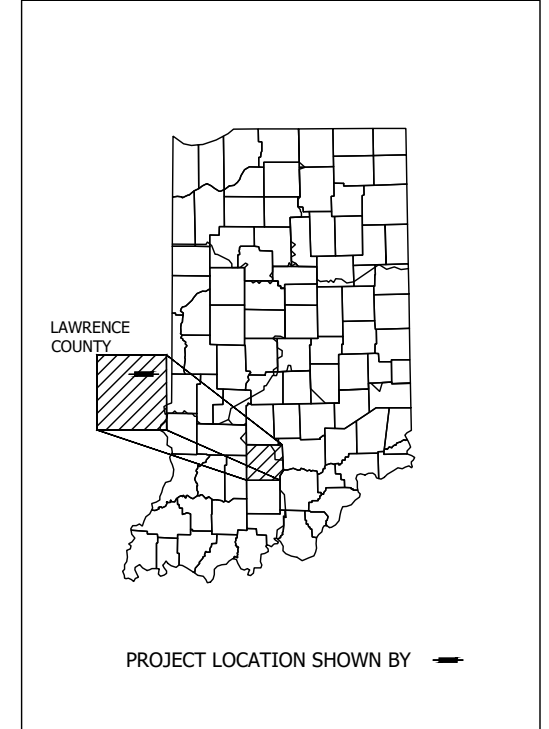
SR 58 SMALL STRUCTURAL REPLACEMENT
ROUTE : SR 58 FROM: RP 81+033 TO: RP 81+033
PROJECT NO. 2200992 P.E.
2200992 R/W
2200992 CONST.

Small Structure Replacement on SR 58 Located 3.82 Miles E of SR 37
 Section 7, T-5-N, R-1-E, Shawswick Township, Lawrence County, Indiana



SHAWSWICK TOWNSHIP LAWRENCE COUNTY LOCATION MAP

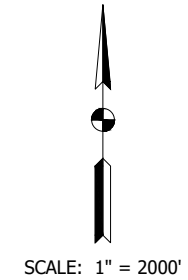
TRAFFIC DATA		SR58
A.D.T. (2024)		3089 V.P.D.
A.D.T. (2044)		3089 V.P.D.
D.H.V. (2044)		306 V.P.H.
DIRECTIONAL DISTRIBUTION		48.88%
TRUCKS (2044)		2.49 % A.A.D.T. 0.98 % D.H.V.
DESIGN DATA		SR58
DESIGN SPEED		45 M.P.H.
PROJECT DESIGN CRITERIA		3R (NON-FREEWAY)
FUNCTIONAL CLASSIFICATION		PRINCIPAL ARTERIAL
RURAL/URBAN		RURAL
TERRAIN		ROLLING
ACCESS CONTROL		NONE



Hydrologic Unit Code (HUC): 05120208040030

LATITUDE: 38°52' 59" N LONGITUDE: 86°27' 21" W

GROSS LENGTH: 0.057 MI.
 NET LENGTH: 0.057 MI.
 MAX. GRADE: 6.59% %



STAGE 3 SUBMITTAL
July, 2024

INDIANA DEPARTMENT OF TRANSPORTATION
 STANDARD SPECIFICATIONS DATED 2024
 TO BE USED WITH THESE PLANS



AZTEC Engineering Group, Inc.
 TYP SA Group Company
 320 W. 8th Street
 Suite 100
 Bloomington, IN 47404

PLANS PREPARED BY:	Aztec Engineering Group, Inc.	812-717-2555 PHONE NUMBER
CERTIFIED BY:		DATE
APPROVED FOR LETTING:		DATE
INDIANA DEPARTMENT OF TRANSPORTATION		

BRIDGE FILE		N/A
DESIGNATION		2200992
SURVEY BOOK		SHEETS
N/A	1	of 20
CONTRACT	PROJECT	
R-45552	2200992	

UTILITIES

ELECTRIC: Duke Energy
100 S Mill Creek Rd
Noblesville, IN 46062
Attn: Don McDuffy
dei-dline-coord@duke-energy.com
Tel. 317-776-5320

COMMUNICATIONS: Comcast
1600 W Fountain Dr
Bloomington, IN 47404
Attn: Richard Miller
richard_miller3@cable.comcast.com
Tel. 317-945-2670

COMMUNICATIONS: AT&T - Distribution
1404 K St.
Bedford, IN 47421
Attn: Van Roberts
vr2712@att.com
Tel. 812-318-2492

SEWER, WATER: Bedford City Utilities
1614 L Street
Bedford, IN 47421
Attn: Misty Adams
madams@bedford.in.us



GENERAL NOTES

- ** All earth shoulders, median areas, and cut and fill slopes shall be plain or mulched seeded except where sodding is specified.
 - The final cross sections of the grading contract will be the original cross sections of the paving contract. However, partial or complete cross sections shall be taken if necessary to determine the actual excavation quantities.
 - The paper relocation will be cross sectioned by the engineer before construction.
 - ** Contractor shall verify the existing flowline elevation to set the appropriate sump depth.
 - ** Site shall be graded to ensure positive drainage on the site.
 - ** Maintenance of Traffic for Loading and Unloading of Equipment shall be in accordance with Indiana Department of Transportation Standard Specifications and Indiana Manual on Uniform Traffic Control Devices.
 - ** All Pavement (Concrete, Asphalt or Aggregate) designed to be removed shall be removed in its entirety.
 - ** Contractor shall verify all utilities prior to beginning construction activities.
- ** REPRESENTS GENERAL NOTE REQUIRED

INDEX

SHEET NO.	DRAWINGS INDEX
1	TITLE SHEET
2	INDEX AND GENERAL NOTES
3-5	TYPICAL SECTIONS
6	PLAT NO. 1
7	GEOMETRIC CONTROL
8	MAINTENANCE OF TRAFFIC
9	PLAN & PROFILE
10	EROSION CONTROL DETAILS & TABLE
11	PAVEMENT MARKING & SIGNING DETAILS
12	ROAD SUMMARY TABLES
13-20	CROSS SECTIONS

REVISIONS

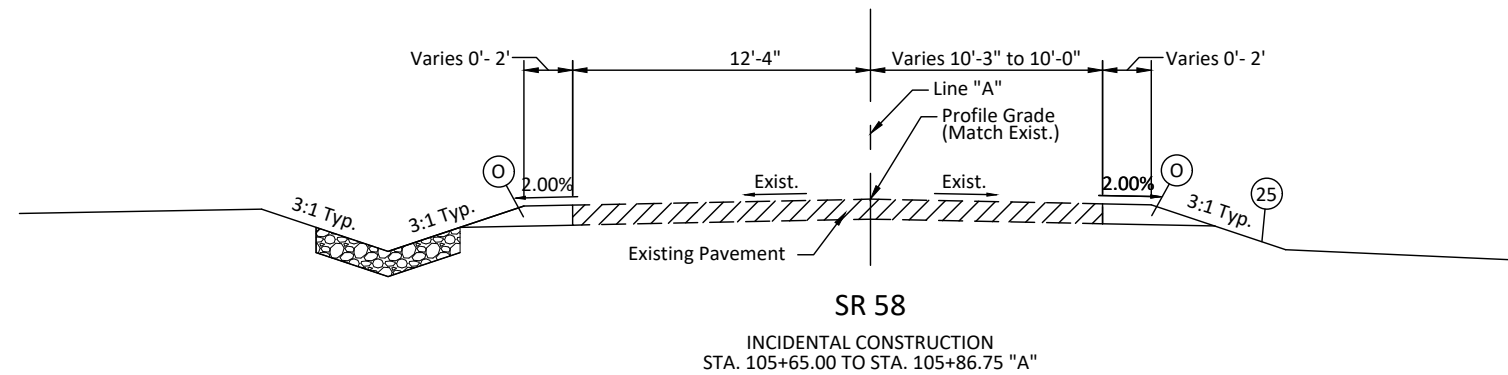
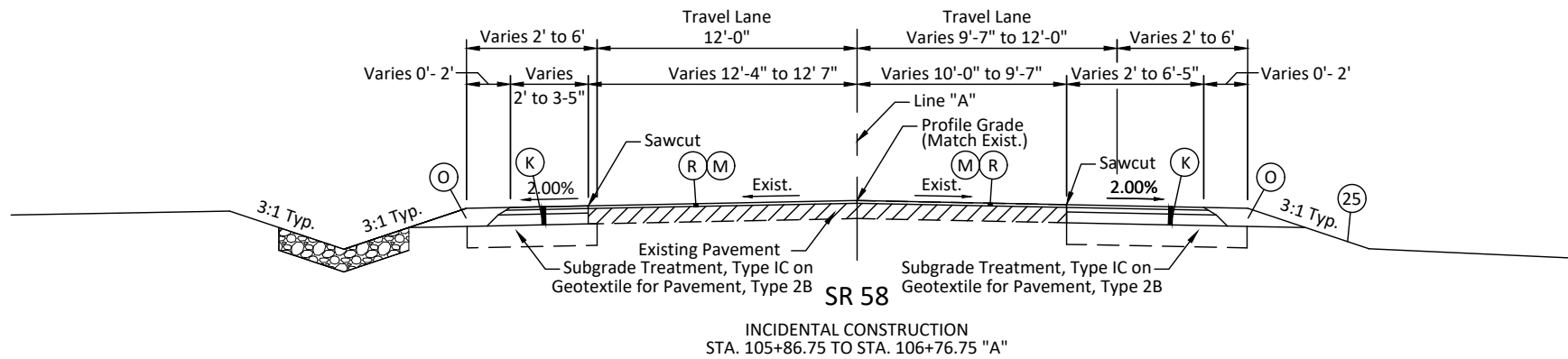
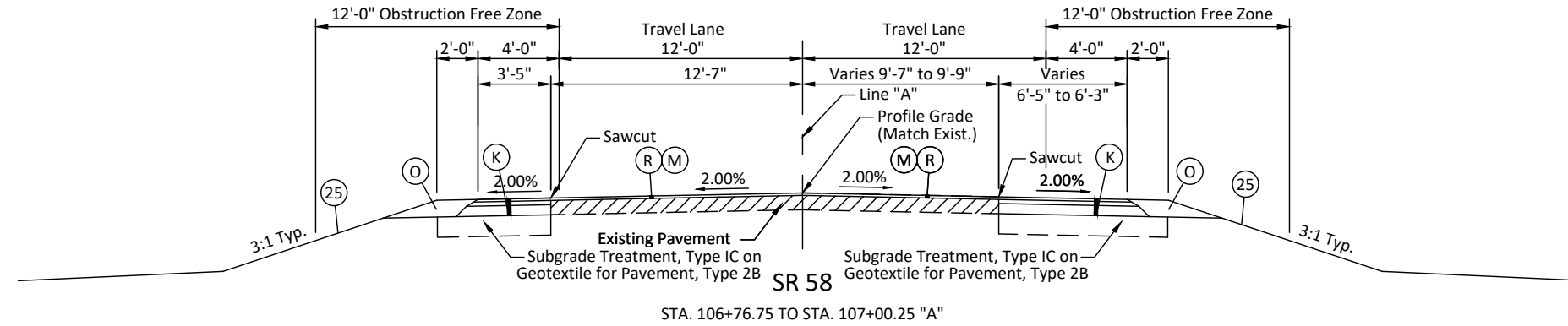
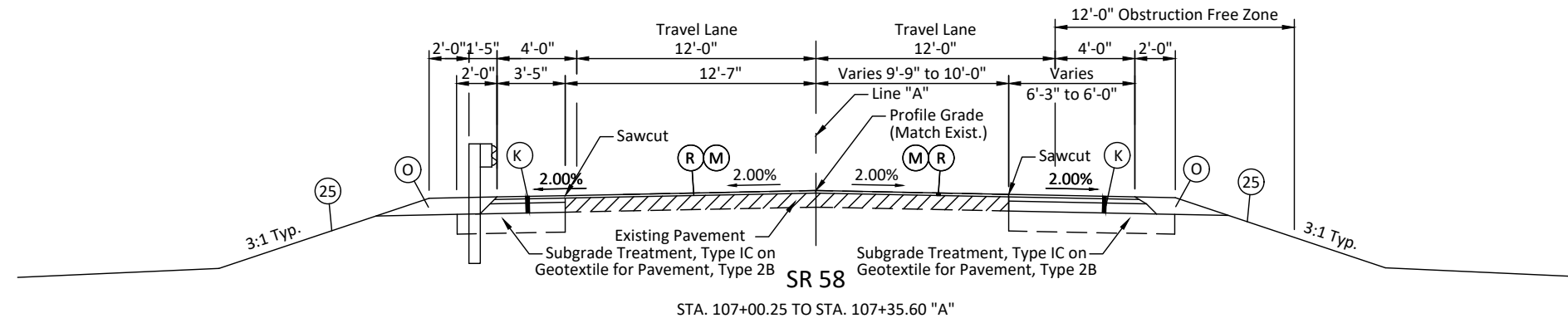
SHEET NO.	DATE	REVISED

PLOTTED: Friday, April 12, 2024 11:11:19 AM

RECOMMENDED FOR APPROVAL _____ <small>DESIGN ENGINEER</small>	DATE _____
DESIGNED: BSF _____	DRAWN: MR _____
CHECKED: LAR _____	CHECKED: BSF _____

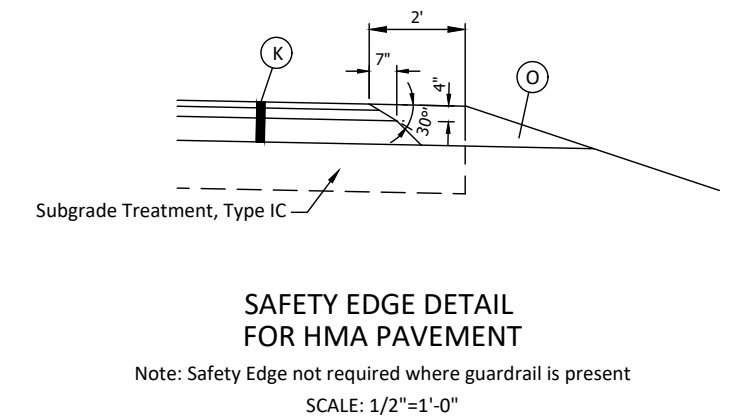
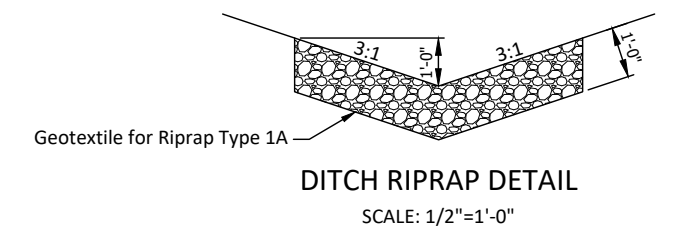
INDIANA DEPARTMENT OF TRANSPORTATION
INDEX SHEET

HORIZONTAL SCALE N/A	BRIDGE FILE N/A
VERTICAL SCALE N/A	DESIGNATION 2200992
SURVEY BOOK N/A	SHEETS 2 of 20
CONTRACT R-45552	PROJECT 2200992



- LEGEND**
- (K) Full Depth HMA Pavement:
165 #/SYS QC/QA HMA, 3, 64, Surface 9.5mm on
275 #/SYS QC/QA HMA, 3, 64, Intermediate 19.0mm on
660 #/SYS QC/QA HMA, 3, 64, Base 25.0mm
 - (M) Asphalt Milling, 1 1/2 In.
 - (R) 165 #/SYS QC/QA HMA, 3, 64, Surface 9.5mm
 - (O) Compacted Aggregate, No. 53
 - (25) Mulched Seeding, R

NOTE: Tack Coat Between All Asphalt Lifts



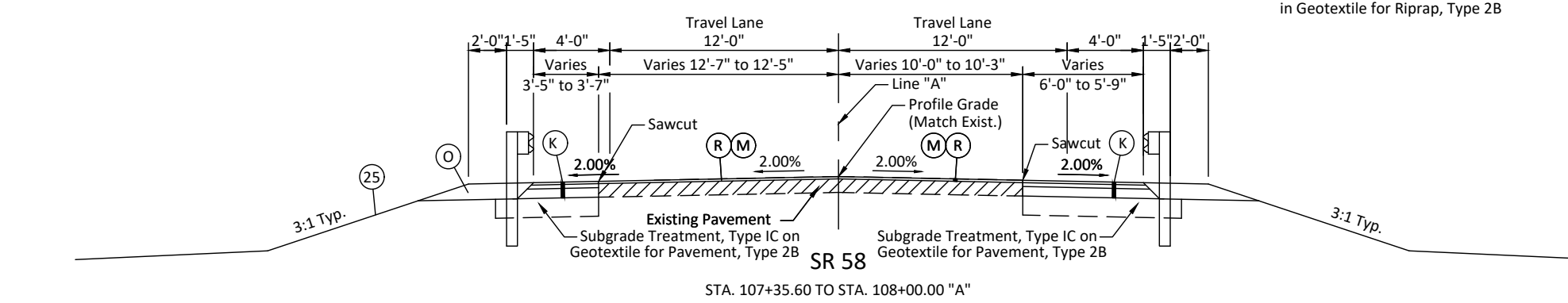
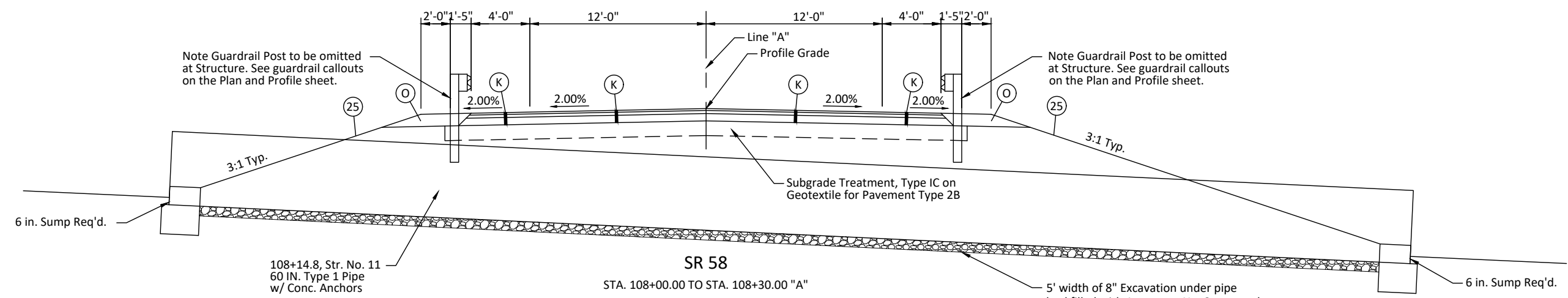
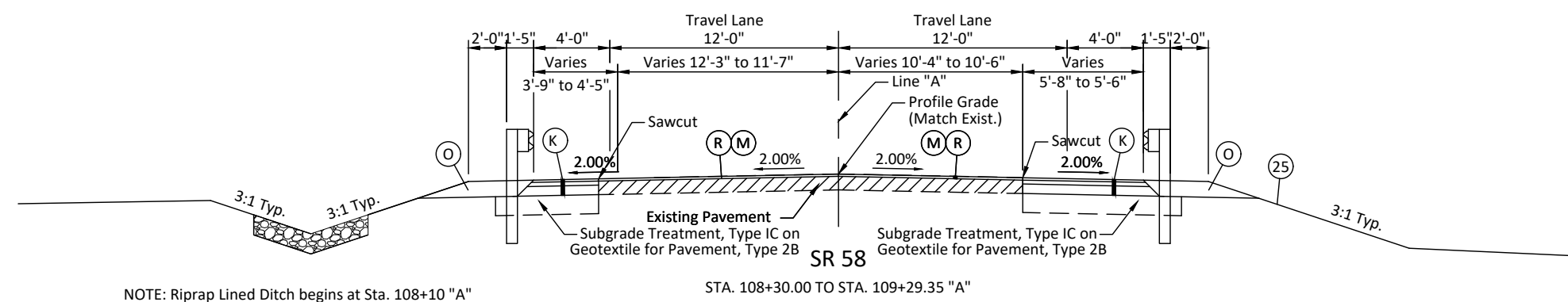
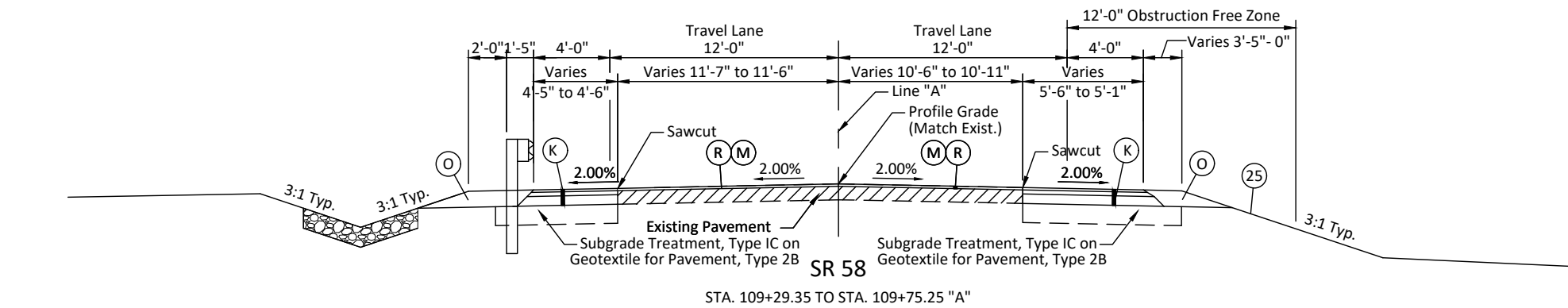
PLOTTED: Thursday, April 18, 2024 11:17:07 AM

FILE: INFWY2203_SHT_TYPMSECTION_01.DWG

RECOMMENDED FOR APPROVAL _____	DESIGN ENGINEER _____	DATE _____
DESIGNED: BSF _____	DRAWN: MR _____	
CHECKED: LAR _____	CHECKED: LAR _____	

INDIANA DEPARTMENT OF TRANSPORTATION	
TYPICAL SECTIONS LINE "A"	

HORIZONTAL SCALE 1/4" = 1'-0"	BRIDGE FILE N/A
VERTICAL SCALE 1/4" = 1'-0"	DESIGNATION 2200992
SURVEY BOOK N/A	SHEETS 3 of 20
CONTRACT R-45552	PROJECT 2200992



- ### LEGEND
- (K) Full Depth HMA Pavement:
165 #/SYS QC/QA HMA, 3, 64, Surface 9.5mm on
275 #/SYS QC/QA HMA, 3, 64, Intermediate 19.0mm on
660 #/SYS QC/QA HMA, 3, 64, Base 25.0mm
 - (M) Asphalt Milling, 1 1/2 In.
 - (R) 165 #/SYS QC/QA HMA, 3, 64, Surface 9.5mm
 - (O) Compacted Aggregate, No. 53
 - (25) Mulched Seeding, R

- NOTES:
1. Tack Coat Between All Asphalt Lifts
 2. For Safety Edge Detail for HMA Pavement See Sheet No. 3.
 2. For Ditch Riprap Detail See Sheet No. 3.

PLOTTED: Thursday, April 18, 2024 11:31:45 AM

FILE: INFWY2203_SHT_TYSECTION_02.DWG

RECOMMENDED FOR APPROVAL _____	DESIGN ENGINEER _____	DATE _____
DESIGNED: BSF _____	DRAWN: BSF _____	
CHECKED: LAR _____	CHECKED: LAR _____	

**INDIANA
DEPARTMENT OF TRANSPORTATION**

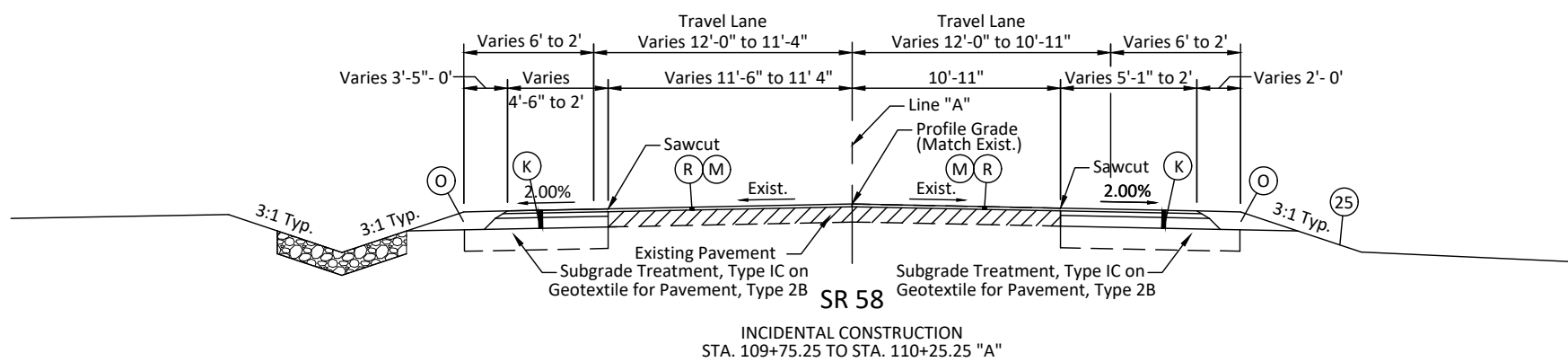
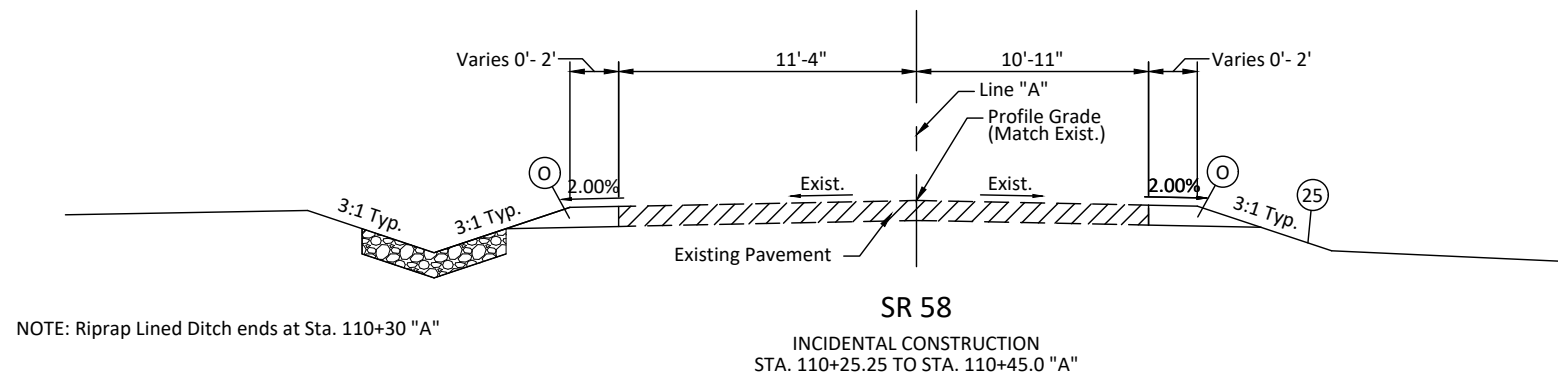
**TYPICAL SECTIONS
LINE "A"**

HORIZONTAL SCALE 1/4" = 1'-0"	BRIDGE FILE N/A
VERTICAL SCALE 1/4" = 1'-0"	DESIGNATION 2200992
SURVEY BOOK N/A	SHEETS 4 of 20
CONTRACT R-45552	PROJECT 2200992

LEGEND

- (K) Full Depth HMA Pavement:
165 #/SYS QC/QA HMA, 3, 64, Surface 9.5mm on
275 #/SYS QC/QA HMA, 3, 64, Intermediate 19.0mm on
660 #/SYS QC/QA HMA, 3, 64, Base 25.0mm
- (M) Asphalt Milling, 1 1/2 In.
- (R) 165 #/SYS QC/QA HMA, 3, 64, Surface 9.5mm
- (O) Compacted Aggregate, No. 53
- (25) Mulched Seeding, R

- NOTES:**
1. Tack Coat Between All Asphalt Lifts
 2. For Safety Edge Detail for HMA Pavement See Sheet No. 3.
 2. For Ditch Riprap Detail See Sheet No. 3.



PLOTTED: Wednesday, April 10, 2024 10:12:04 AM

RECOMMENDED FOR APPROVAL _____	DESIGN ENGINEER _____	DATE _____
DESIGNED: BSF _____	DRAWN: MR _____	
CHECKED: LAR _____	CHECKED: LAR _____	

**INDIANA
DEPARTMENT OF TRANSPORTATION**

**TYPICAL SECTIONS
LINE "A"**

HORIZONTAL SCALE 1/4" = 1'-0"	BRIDGE FILE N/A
VERTICAL SCALE 1/4" = 1'-0"	DESIGNATION 2200992
SURVEY BOOK N/A	SHEETS 5 of 20
CONTRACT R-45552	PROJECT 2200992



SEC. 7, T5N, R1E
SHAWSWICK TWP.
LAWRENCE COUNTY

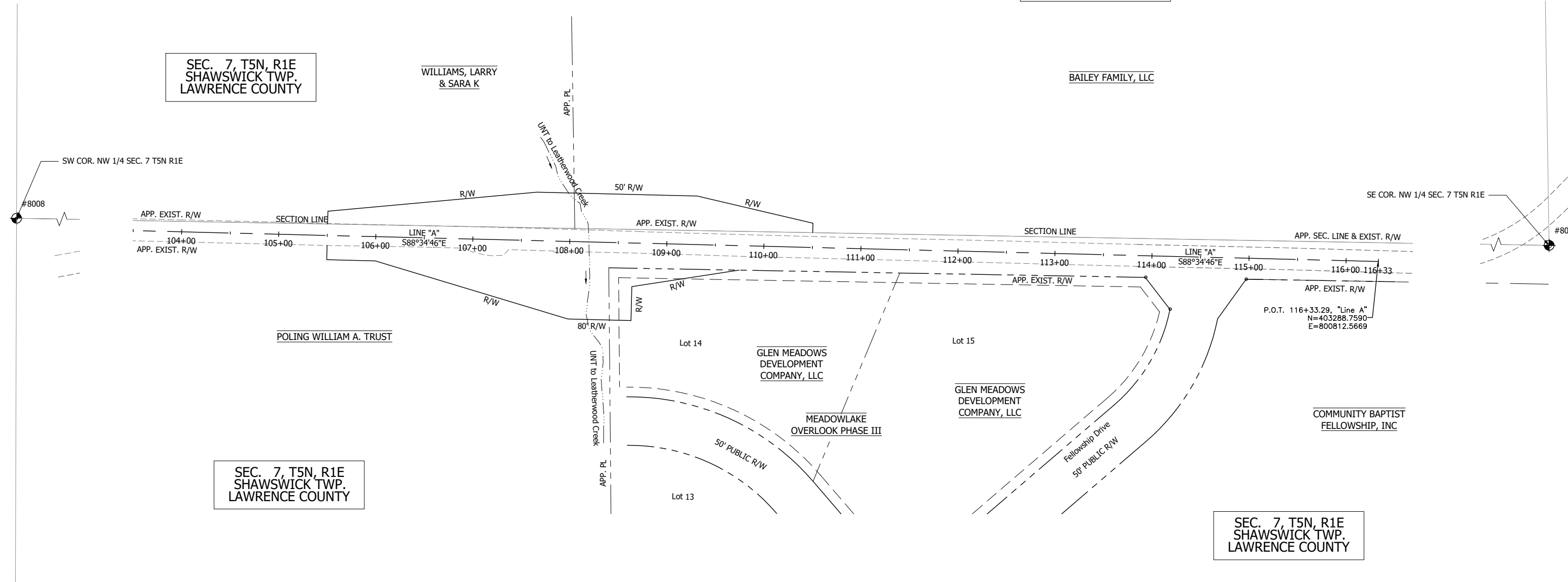
SEC. 7, T5N, R1E
SHAWSWICK TWP.
LAWRENCE COUNTY

WILLIAMS, LARRY
& SARA K

BAILEY FAMILY, LLC

SEC. 7, T5N, R1E
SHAWSWICK TWP.
LAWRENCE COUNTY

SEC. 7, T5N, R1E
SHAWSWICK TWP.
LAWRENCE COUNTY



PLOTTED: Thursday, April 18, 2024 11:45:18 AM

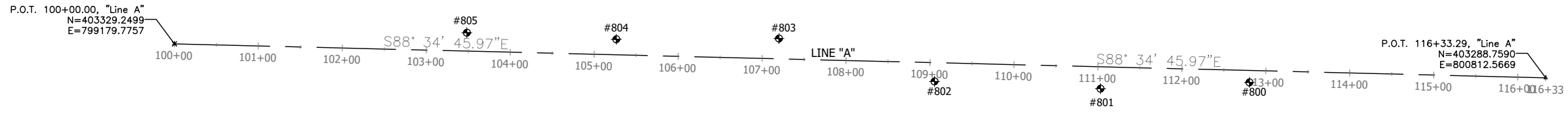
FILE: INMUN2203_RD_PLAT_01.DWG

RECOMMENDED FOR APPROVAL _____	DESIGN ENGINEER _____	DATE _____
DESIGNED: BSF _____	DRAWN: MR _____	
CHECKED: LAR _____	CHECKED: BSF _____	

INDIANA
DEPARTMENT OF TRANSPORTATION

PLAT NO. 1

HORIZONTAL SCALE 1" = 50'	BRIDGE FILE N/A
VERTICAL SCALE N/A	DESIGNATION 2200992
SURVEY BOOK N/A	SHEETS 6 of 20
CONTRACT R-45552	PROJECT 2200992

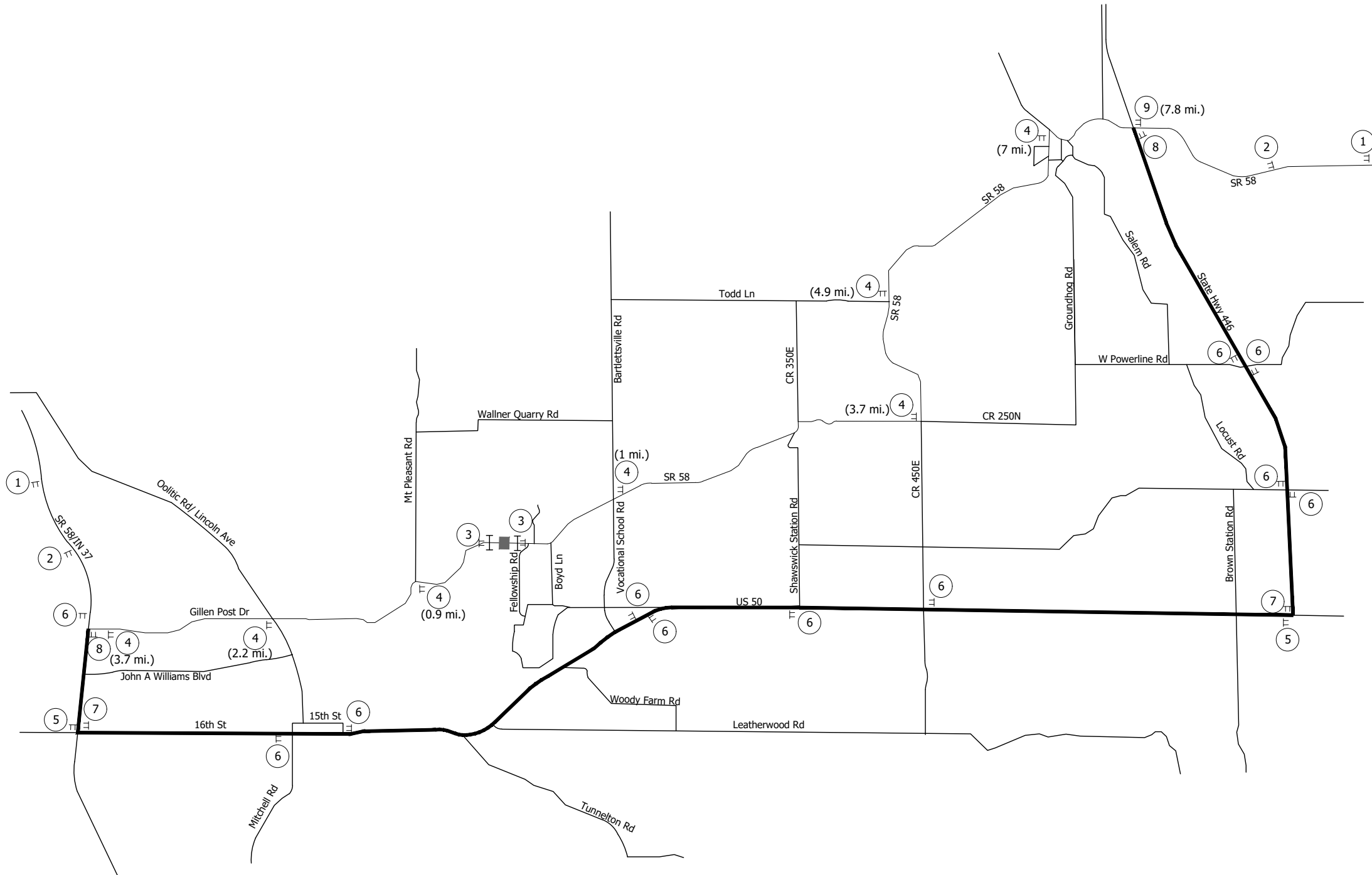


<p>800 NORTH: 403283.2349 EAST: 800459.7430</p> <p>MAG NAIL SET W/ NPES WASHER SET AT GRADE</p> <p>1. MAG NAIL ON EDGELINE, 26.40' AZ 280° 2. MAG NAIL ON EDGELINE, 3.82' AZ 02° 3. MAG NAIL ON EDGELINE, 26.40' AZ 83°</p> <p>NPES CONTROL POINT</p>	<p>801 NORTH: 403275.7779 EAST: 800282.4319</p> <p>REBAR SET W/ NPES TRAVERSE CAP SET AT GRADE</p> <p>1. MAG NAIL ON EDGELINE, 30.44' AZ 302° 2. MAG NAIL ON EDGELINE, 15.63' AZ 02° 3. MAG NAIL ON EDGELINE, 30.52' AZ 60°</p> <p>NPES CONTROL POINT</p>	<p>802 NORTH: 403284.4309 EAST: 800084.8370</p> <p>REBAR SET W/ NPES TRAVERSE CAP SET AT GRADE</p> <p>1. MAG NAIL ON EDGELINE, 28.72' AZ 297° 2. MAG NAIL ON EDGELINE, 12.27' AZ 01° 3. MAG NAIL ON EDGELINE, 28.83' AZ 66°</p> <p>NPES CONTROL POINT</p>	<p>803 NORTH: 403335.5751 EAST: 799899.5696</p> <p>REBAR SET W/ NPES TRAVERSE CAP SET AT GRADE</p> <p>1. MAG NAIL ON EDGELINE, 29.33' AZ 248° 2. MAG NAIL ON EDGELINE, 11.93' AZ 183° 3. MAG NAIL ON EDGELINE, 28.93' AZ 116°</p> <p>NPES CONTROL POINT</p>	<p>804 NORTH: 403334.7308 EAST: 799705.9504</p> <p>REBAR SET W/ NPES TRAVERSE CAP SET AT GRADE</p> <p>1. MAG NAIL ON EDGELINE, 26.83' AZ 257° 2. MAG NAIL ON EDGELINE, 6.70' AZ 181° 3. MAG NAIL ON EDGELINE, 27.26' AZ 105°</p> <p>NPES CONTROL POINT</p>
---	---	---	---	--

<p>805 NORTH: 403342.4986 EAST: 799527.9187</p> <p>REBAR SET W/ NPES TRAVERSE CAP SET AT GRADE</p> <p>1. MAG NAIL ON EDGELINE, 27.59' AZ 250° 2. MAG NAIL ON EDGELINE, 9.94' AZ 181° 3. MAG NAIL ON EDGELINE, 27.89' AZ 112°</p> <p>NPES CONTROL POINT</p>	<p>8004 NORTH: 400717.4454 EAST: 798478.5235</p> <p>REBAR WITH CAP "LAWRENCE COUNTY SURVEYOR" AT GRADE</p> <p>1. MAG NAIL IN BLAZE, N. FACE OF 12" TREE 4'AG, 97.60' AZ 213° 2. MAG NAIL IN BLAZE, N. FACE OF 8" TREE 3.5'AG, 71.24' AZ 181° 3. MAG NAIL IN BLAZE, N. FACE OF 12" TREE 4'AG, 119.82' AZ 141°</p> <p>NPES CONTROL POINT</p>	<p>8006 NORTH: 403293.3386 EAST: 801642.7108</p> <p>MAG SPIKE W/WASHER "BRJ INC 6892 IN" AT GRADE</p> <p>1. MAG NAIL, N. FACE PP#864-1154 1'AG, 45.14' AZ 222° 2. MAG NAIL, S. FACE PP#63 1'AG, 53.40' AZ 352° 3. CROSS CUT N.W. FLANGE BOLT OF HYD, 41.32' AZ 97°</p> <p>NPES CONTROL POINT</p>	<p>8007 NORTH: 405919.1932 EAST: 801602.5287</p> <p>6"X6" CONCRETE MONUMENT W/ COPPER PLUG 5" ABOVE GRADE</p> <p>1. MAG NAIL, S. FACE CORNER POST 1'AG, 6.78' AZ 28° 2. MAG NAIL, S. FACE BRACE POST 1'AG, 6.99' AZ 326° 3. MAG NAIL, N. FACE 15" TREE, IN BRACE 1'AG, 13.16' AZ 160°</p> <p>NPES CONTROL POINT</p>	<p>8008 NORTH: 403349.5420 EAST: 798486.2641</p> <p>REBAR WITH CAP "LAWRENCE COUNTY SURVEYOR" AT GRADE</p> <p>1. MAG NAIL, NE. FACE PP#193-217 1'AG, 8.58' AZ 216° 2. MAG NAIL ON N. EDGELINE OF SR-58, 46.89' AZ 180° 3. MAG NAIL, SW. FACE PP#864-1137 3' AG, 80.55' AZ 109°</p> <p>NPES CONTROL POINT</p>	<p>8009 NORTH: 405982.2570 EAST: 798495.3749</p> <p>6"X6" CONCRETE MONUMENT W/ COPPER PLUG "LAWRENCE COUNTY CORNER 1963" 12" BELOW GRADE</p> <p>1. MAG NAIL, S. FACE CORNER POST 1'AG, 3.31' AZ 181° 2. MAG NAIL, N. FACE 18" TREE, IN BRACE 2'AG, 8.93' AZ 116° 3. MAG NAIL, SW. FACE 12" TREE, IN BRACE 2'AG, 31.75' AZ 23°</p> <p>NPES CONTROL POINT</p>
--	--	--	---	--	---

RECOMMENDED FOR APPROVAL _____	DESIGN ENGINEER _____ DATE _____	INDIANA DEPARTMENT OF TRANSPORTATION	HORIZONTAL SCALE 1"=75'	BRIDGE FILE N/A
DESIGNED: BSF	DRAWN: MR		VERTICAL SCALE N/A	DESIGNATION 2200992
CHECKED: LAR	CHECKED: LAR		SURVEY BOOK N/A	SHEETS 7 of 20
GEOMETRIC CONTROL			CONTRACT R-45552	PROJECT 2200992

PLOTTED: Wednesday, April 10, 2024 10:18:00 AM



- LEGEND**
- Work Zone
 - Type III-B Barricade
 - Temporary Sign

- NOTES**
1. Distances shown are typical except minimum distances may be varied based on field conditions.
 2. See Standard Drawing E801-TCLG-01 for Standard Notes.
 3. Maintain Access to Existing Driveways.

 W20-3 36"x36"	 W20-2 36"x36"	 R11-2 48"x30"	 R11-4 60"x30"	 R11-4 60"x30" XM4-10(L) 48"x18"	 M4-8 24"x12"	 M4-8 24"x12"	 M4-8 24"x12"	 M4-8 24"x12"
 SR 58 SPECIAL BLK/WHT 24"x24"	 SR 58 SPECIAL BLK/WHT 24"x24"	 SR 58 SPECIAL BLK/WHT 24"x24"	 M4-6 24"x12"	 SR 58 SPECIAL BLK/WHT 24"x24"	 SR 58 SPECIAL BLK/WHT 24"x24"	 SR 58 SPECIAL BLK/WHT 24"x24"	 SR 58 SPECIAL BLK/WHT 24"x24"	

PLOTTED: Wednesday, April 10, 2024 10:21:25 AM

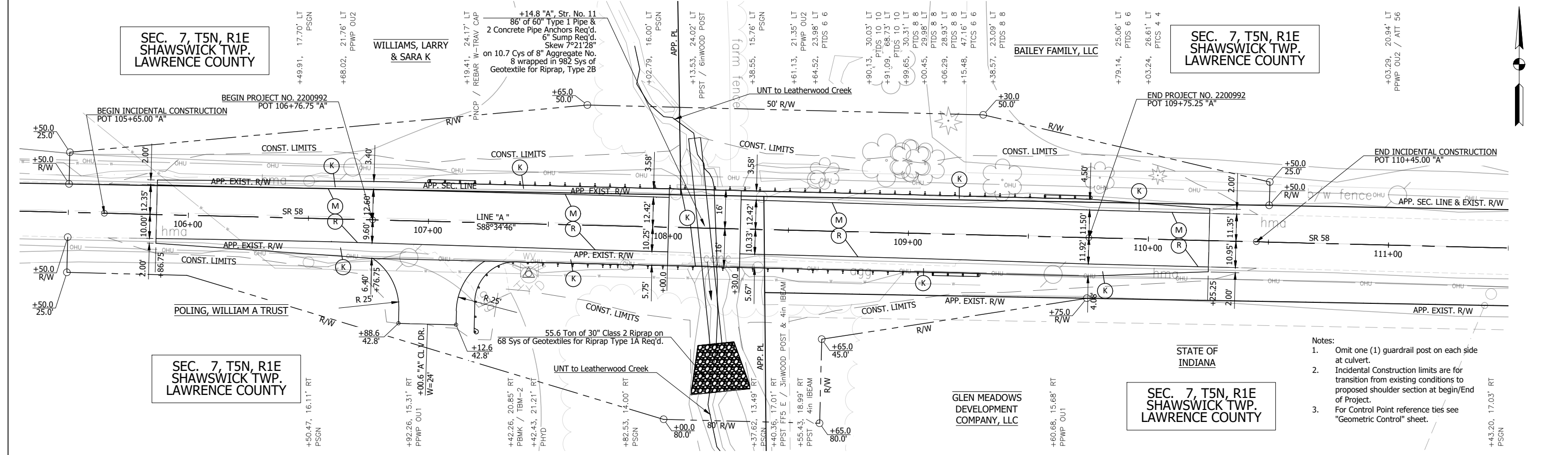
FILE: SHT_DETOUR.DWG

RECOMMENDED FOR APPROVAL	DESIGN ENGINEER	05-25-2023	DATE
DESIGNED: BSF	DRAWN: BSF		
CHECKED: LAR	CHECKED: LAR		

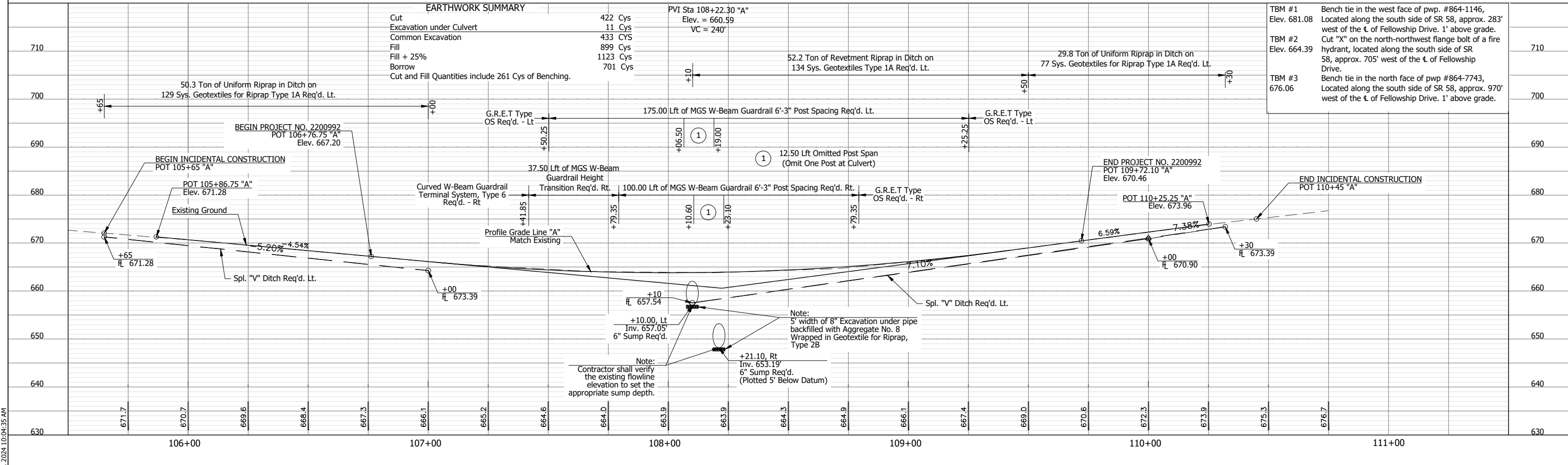
INDIANA
DEPARTMENT OF TRANSPORTATION

**MAINTENANCE OF TRAFFIC
SR 58 DETOUR**

HORIZONTAL SCALE	BRIDGE FILE
N.T.S.	N/A
VERTICAL SCALE	DESIGNATION
N.T.S.	2200992
SURVEY BOOK	SHEETS
N/A	8 of 20
CONTRACT	PROJECT
R-45552	2200992



- Notes:
- Omit one (1) guardrail post on each side at culvert.
 - Incidental Construction limits are for transition from existing conditions to proposed shoulder section at begin/end of Project.
 - For Control Point reference ties see "Geometric Control" sheet.



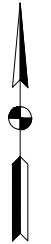
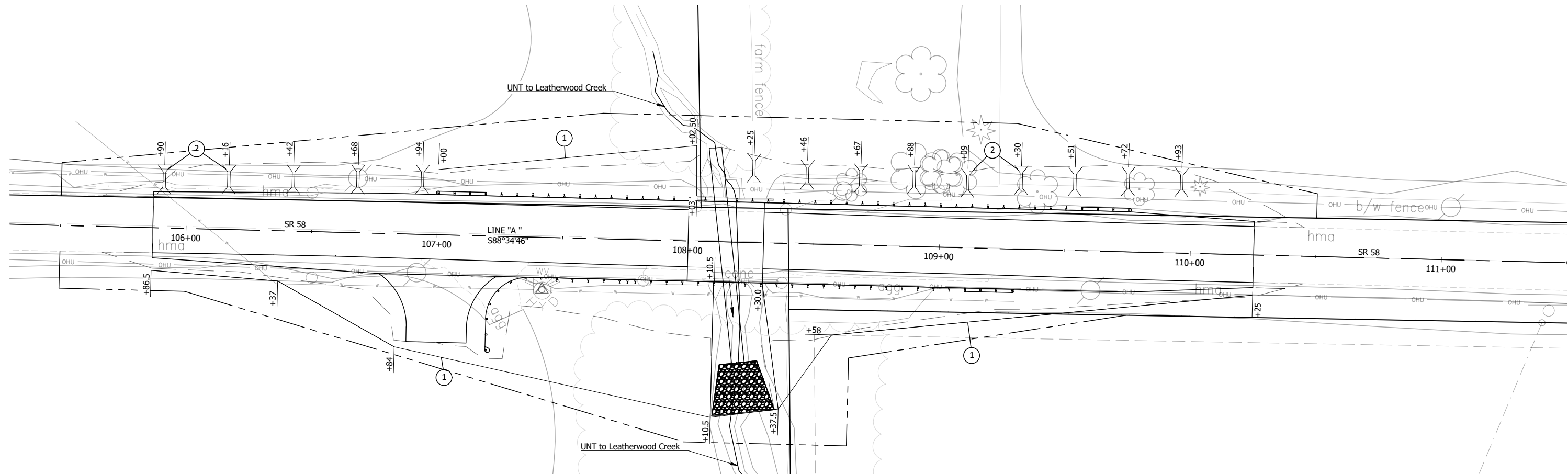
- (K) Full Depth HMA Pavement: See Typical Section
- (M) Milling, Asphalt, 1 1/2 in.
- (R) 165 #/SYS QC/QA-HMA, 3, 64, Surface 9.5 mm

RECOMMENDED FOR APPROVAL	DESIGN ENGINEER	DATE
DESIGNED: BSF	DRAWN: MR	
CHECKED: LAR	CHECKED: BSF	

INDIANA
DEPARTMENT OF TRANSPORTATION

PLAN & PROFILE
STA 106+90 TO STA 109+67 Line "A"

SCALE	BRIDGE FILE
1" = 20'	N/A
VERTICAL SCALE	DESIGNATION
1" = 10'	2200992
SURVEY BOOK	SHEETS
N/A	9 of 20
CONTRACT	PROJECT
R-45552	2200992



TEMPORARY EROSION CONTROL TABLE

STATION	LOCATION			SILT FENCE (E 205-TECD-11)	CHECK DAM, REVETMENT RIPRAP (E 205-TECD-06)	GEOTEXTILE (E 205-TECD-06 & E 205-TECD-12)	FILTER SOCK (E 205-TECD-02)	FILTER BAG INSERT (E 205-TECD-04)	CURB INLET PROTECTION (E 205-TECD-05)	DITCH CHECK, REVETMENT RIPRAP (E 205-TECD-06)	DITCH CHECK, FILTER STONE (E 205-TECD-06)	FISH POOL	REMARKS
	LEFT	MEDIAN	RIGHT										
Line "A"													
105+86.50 to 106+37.00			X	50.6									
105+90	X				8.3	2.9							
106+16	X				8.3	2.9							
106+37.00 to 106+84.00			X	53.3									
106+42					8.3	2.9							
106+68					8.3	2.9							
106+84.00 to 108+10.50			X	129.1									
106+94					8.3	2.9							
108+10.50 to 108+10.50			X	53.0									
107+00 to 108+02.50			X	103.2									
108+02.50 to 108+03.00			X	20.0									
108+25					8.3	2.9							
108+30.00 to 108+37.50			X	50.0									
108+46					8.3	2.9							
108+37.50 to 108+58.00			X	36.4									
108+58.00 to 110+25.00			X	168.2									
108+67	X				8.3	2.9							
108+88	X				8.3	2.9							
109+09	X				8.3	2.9							
109+30	X				8.3	2.9							
109+51	X				8.3	2.9							
109+72	X				8.3	2.9							
109+93	X				8.3	2.9							
Total				664	116	41							

- ① Temporary Silt Fence (E 205-TECD-11)
- ② Temporary Check Dam, Revetment Riprap (E 205-TECD-06)

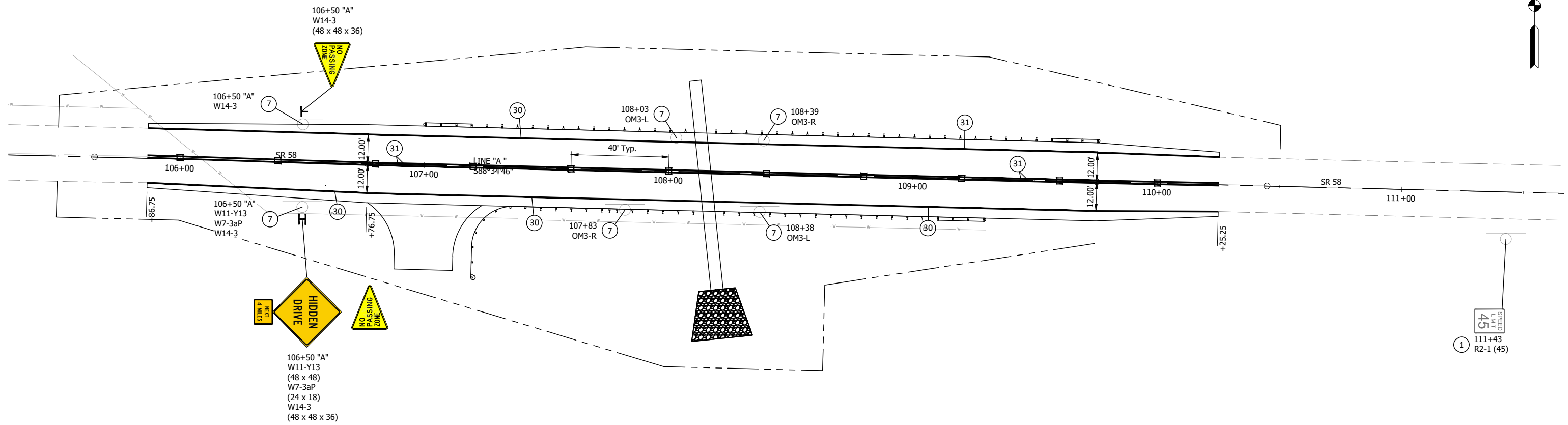
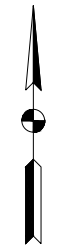
RECOMMENDED FOR APPROVAL _____	DESIGN ENGINEER _____	DATE _____
DESIGNED: BSF _____	DRAWN: MR _____	
CHECKED: LAR _____	CHECKED: BSF _____	

INDIANA
DEPARTMENT OF TRANSPORTATION

EROSION CONTROL & TABLE

HORIZONTAL SCALE	BRIDGE FILE
VERTICAL SCALE	N/A
	DESIGNATION
	2200992
SURVEY BOOK	SHEETS
N/A	10 of 20
CONTRACT	PROJECT
R-45552	2200992

PLOTTED: Friday, April 26, 2024 11:00:45 AM



RECOMMENDED FOR APPROVAL	DESIGN ENGINEER	DATE
DESIGNED: BSF	DRAWN: MR	
CHECKED: LAR	CHECKED: BSF	

INDIANA
DEPARTMENT OF TRANSPORTATION

PAVEMENT MARKING & SIGNING DETAILS
STA 105+86.75 TO STA 110+25.25

HORIZONTAL SCALE	BRIDGE FILE
1" = 20'	N/A
VERTICAL SCALE	DESIGNATION
N/A	2200992
SURVEY BOOK	SHEETS
N/A	11 of 20
CONTRACT	PROJECT
R-45552	2200992

PLOTTED: Wednesday, April 10, 2024 10:32:34 AM

PAVEMENT QUANTITIES AND APPROACH TABLE

Table with columns for LOCATION, DESCRIPTION, WIDTH, LENGTH, RADI, DISTANCE BEYOND R/W LINE, SURFACE BEYOND R/W LINE, GRADE, EXCAVATION, QC/QA HMA MATERIALS FOR ROADWAY, HMA FOR APPROACHES, HMA MATERIAL FOR, MILLING, ASPHALT, PCCP FOR APPROACHES, COMPACTED AGGREGATE NO. 53, COMPACTED AGGREGATE FOR SURFACE NO. 73, GEOTEXTILE FOR PAVEMENT, TYPE 2B, COMPACTED AGGREGATE NO. 53, CONCRETE CURB, CONCRETE CURB RAMP, SUBGRADE TREATMENT TYPE IBC, SUBGRADE TREATMENT TYPE IC, SUBGRADE TREATMENT TYPE II, SUBGRADE TREATMENT TYPE III, REMARKS.

STRUCTURE DATA TABLE

Table with columns for STRUCTURE NUMBER, LOCATION, DESCRIPTION, FLOWLINE, STRUCTURE BACKFILL, BACKFILL METHOD, FLOWABLE BACKFILL, GEOTEXTILES FOR RIPRAP, AGGREGATE NO. 8, CLASS I RIPRAP, CLASS II RIPRAP, CONCRETE PIPE ANCHOR, VIDEO INSPECTION, GRATED BOX END SECTION, PIPE END SECTION, CONNECT TO STR, CULVERT ASSET ID, REMARKS.

PIPE MATERIAL TABLE

Table with columns for INT. DES., CONC., PLASTIC PIPE, CLAY, CORRUGATED STEEL PIPE / PIPE ARCH, CORRUGATED ALUM. PIPE / P-ARCH, CORRUGATED ALUM. PIPE, SPIRAL RIB STEEL PIPE, STRUCTURAL PLATE PIPE / PIPE-ARCH, STRUCTURE NUMBER, PIPE TYPE / SHAPE (CIR or DEF), SMOOTH PIPE SIZE, CORRUGATED PIPE SIZE, SEMI-SMOOTH PIPE SIZE, CLASS, D. III, RATING, NON-REINFORCED CONCRETE PIPE, CLASS 3 (S), CORRUGATED PE PIPE, TYPE S (S)*, PROFILE WALL (RIBBED) PE PIPE (S)*, PROFILE WALL (CLOSED) PE PIPE (S)*, SMOOTH WALL PE PIPE (S)* / MAXIMUM DR, CORRUGATED PP PIPE (S), PROFILE WALL PVC PIPE (S), SMOOTH WALL PVC PIPE (S)*, VITRIFIED CLAY PIPE, EXTRA STRENGTH (S), FULLY BIT. PAVED & LINED (S), ZINC COATED (C), ZINC COATED W/ BPI (C), ALUM. COATED TYPE 2 (C), POLYMER PRECOATED GALVANIZED (C), POLYMER PRECOATED GALVANIZED CORRUGATED STEEL PIPE TYPE 1A (S), CORRUGATED ALUM. ALLOY (C), CORRUGATED ALUM. ALLOY W/ BPI (C), ZINC COATED (SS), ZINC COATED W/ BPI (SS), ALUM. COATED TYPE 2 (SS), POLYMER PRECOATED GALVANIZED (SS), STR. PLATE ALUMINUM ALLOY (C), STR. PLATE ALUMINUM ALLOY W/ CFP (C), STR. PLATE STEEL (C), STR. PLATE STEEL W/ CFP (C).

LEGEND

Table with columns for PIPE MATERIAL, PIPE PROTECTION, SHAPE, INTERIOR DESIGNATION, PIPE SIZE. Includes descriptions for RCP, RCHPE, PE, DR, PVC, PP, CORR, ALUM, STR (LS), BPI, CFP, BIT, CIR, DEF, (S), (C), (SS), etc.

GUARDRAIL SUMMARY TABLE

Table with columns for LOCATION, MGS W-BEAM GUARDRAIL LENGTH, CURVED W-BEAM GUARDRAIL, REMARKS. Includes sub-columns for STANDARD POST, DOUBLE FACED, HEIGHT TRANSITION, GUARDRAIL TRANSITION WITH CURB, GUARDRAIL TRANSITION WITHOUT CURB, STR. TERMINAL POST, CABLE TERMINAL ANCHOR, SHOP CURVED AT, LONG-SPAN GUARDRAIL, GUARDRAIL FLARE RATE, GUARDRAIL END TREATMENT TYPE O5, GUARDRAIL END TREATMENT TYPE MS, GUARDRAIL TRANSITION TYPE TGB, W-BEAM STANDARD POST AT SPA, TERMINAL SYSTEM, CONNECTOR SYSTEM, GUARDRAIL REMOVE, GUARDRAIL RESET, IMPACT ATTENUATOR TYPE.

PAVED SIDE DITCH, RIPRAP DITCH, AND SODDING SUMMARY TABLE

Table with columns for LOCATION, PAVED SIDE DITCH, RIPRAP DITCH, SODDING, REMARKS. Includes sub-columns for ACTUAL LENGTH, CUT OFF WALLS (8 FT EQUAL LENGTH EACH), TOTAL EQUIVALENT PAY LENGTHS, TYPE, RIPRAP, REVETMENT, RIPRAP, UNIFORM, GEOTEXTILES, FOR PAVED SIDE DITCHES, FOR DITCHES, FOR MEDIAN, FOR SHOULDER BREAK, SODDING AT BRIDGE CONE, TOTAL SODDING, NURSERY SODDING FOR LAWNS.

PAVEMENT MARKINGS SUMMARY OF QUANTITIES

Table with columns for LOCATION, LINE THERMOPLASTIC (SOLID WHITE, SOLID YELLOW, BROKEN WHITE, BROKEN YELLOW), SNOW/RAVINE MARKERS, REMARKS.

SHEET SIGN & POST SUMMARY

Table with columns for PLAN SHEET NO. / LINE, SIGN LOCATION (STA.), SIGN CODE, SIGN SIZE (IN. x IN.), GROUND-MOUNTED SIGN AREA (R²), POST SQUARE, REINFORCED ANCHOR POST LENGTH (FT.), REMARKS.

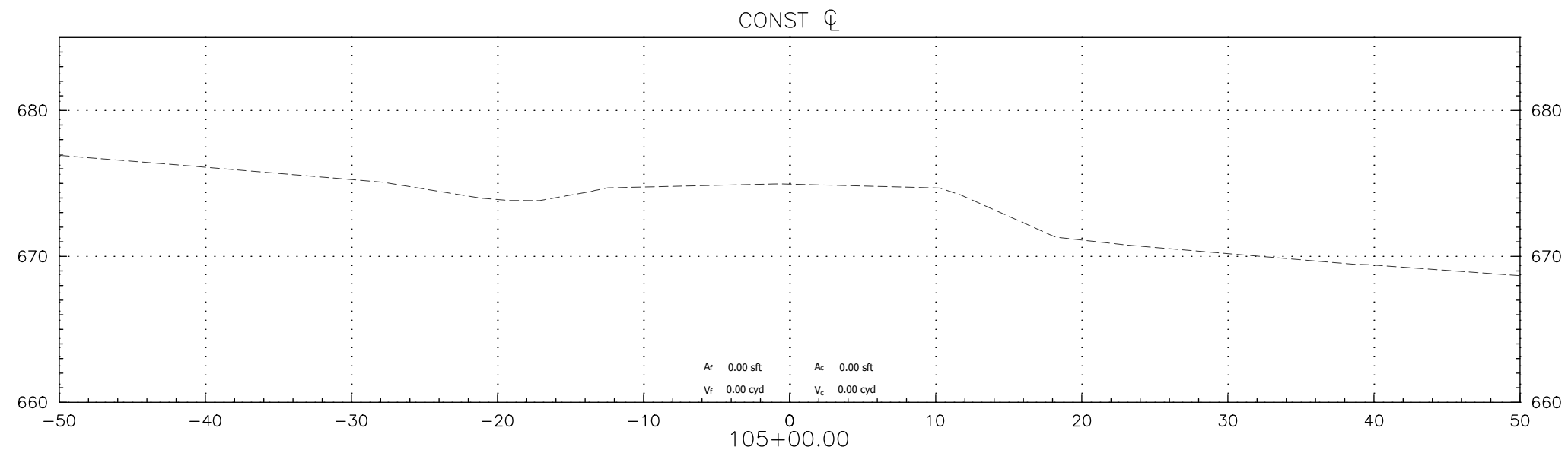
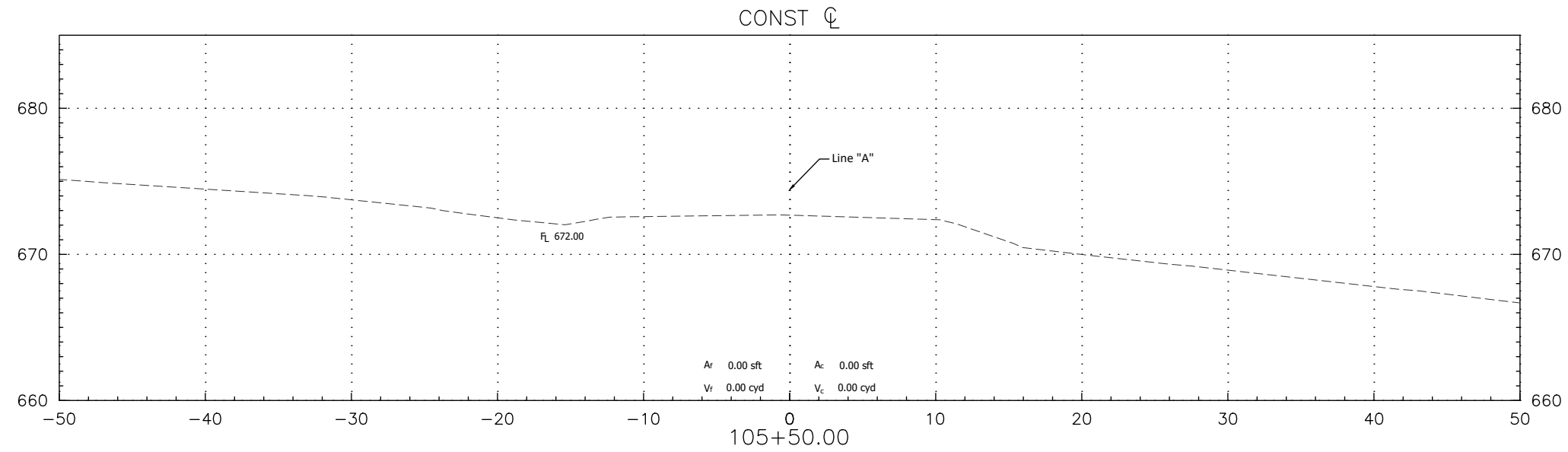
FILE: SHT_ROAD_SUMMARY_TABLES_01.DWG

Table with columns for RECOMMENDED FOR APPROVAL, DESIGN ENGINEER (07-13-23), DESIGNED: BSF, DRAWN: BSF, CHECKED: LAR, CHECKED: LAR.

INDIANA DEPARTMENT OF TRANSPORTATION

ROAD SUMMARY TABLES

Table with columns for HORIZONTAL SCALE, BRIDGE FILE, VERTICAL SCALE, DESIGNATION, SURVEY BOOK, SHEETS, CONTRACT, PROJECT.



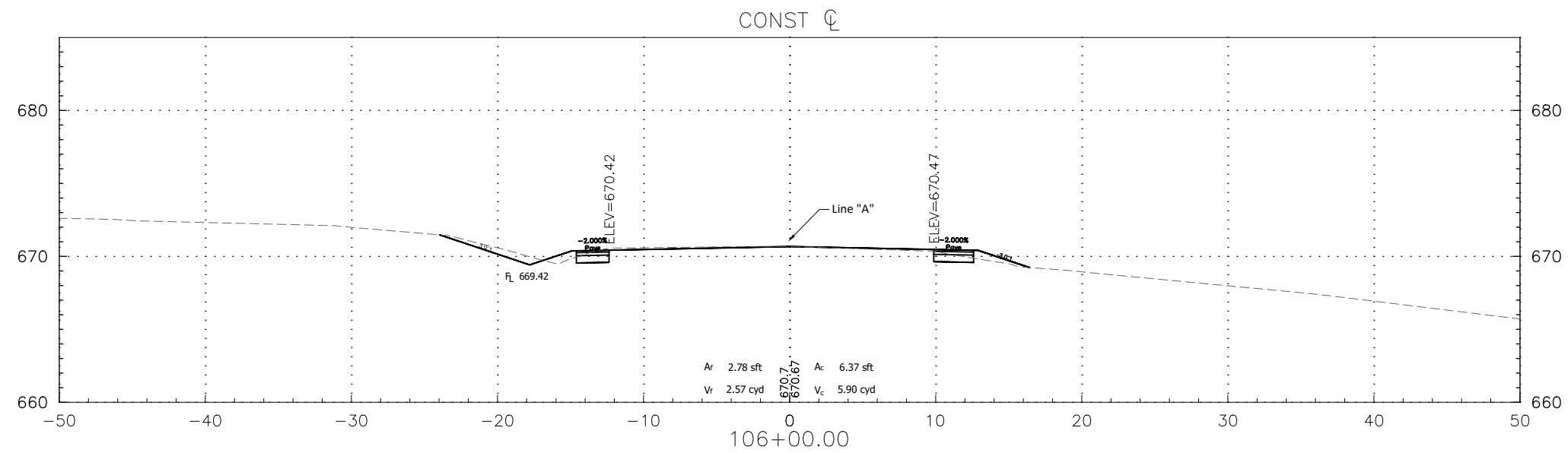
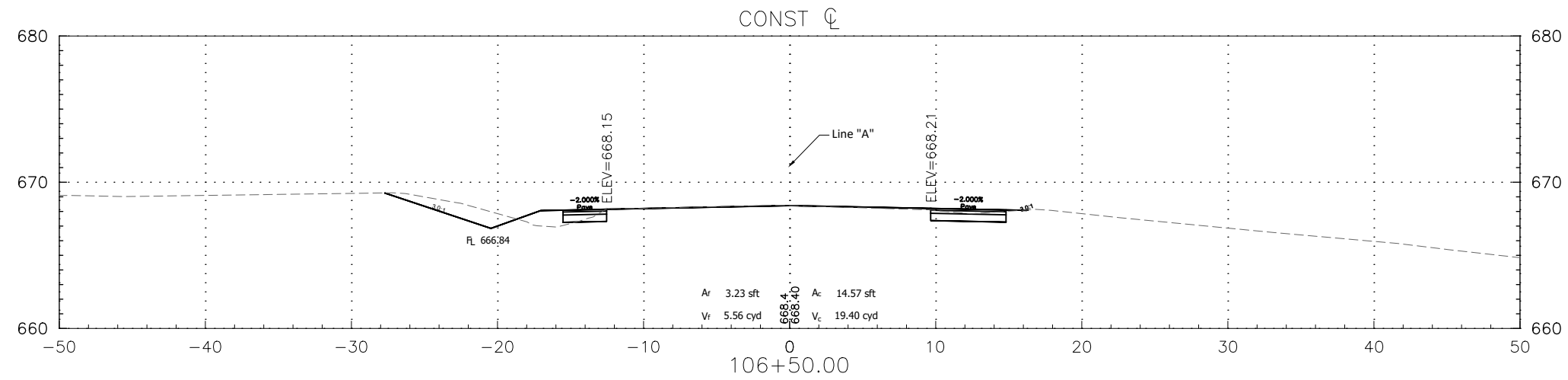
PLOTTED: Thursday, April 18, 2024 10:09:30 AM

FILE: INMUN2203_RD_CORRIDOR.DWG

RECOMMENDED FOR APPROVAL _____	DESIGN ENGINEER _____	DATE _____
DESIGNED: _____	DRAWN: _____	
CHECKED: _____	CHECKED: _____	

INDIANA DEPARTMENT OF TRANSPORTATION
CROSS SECTIONS

HORIZONTAL SCALE 1" = 5'	BRIDGE FILE N/A
VERTICAL SCALE 1" = 5'	DESIGNATION 2200992
SURVEY BOOK N/A	SHEETS 13 of 20
CONTRACT R-45552	PROJECT 2200992



PLOTTED: Thursday, April 18, 2024 10:09:31 AM

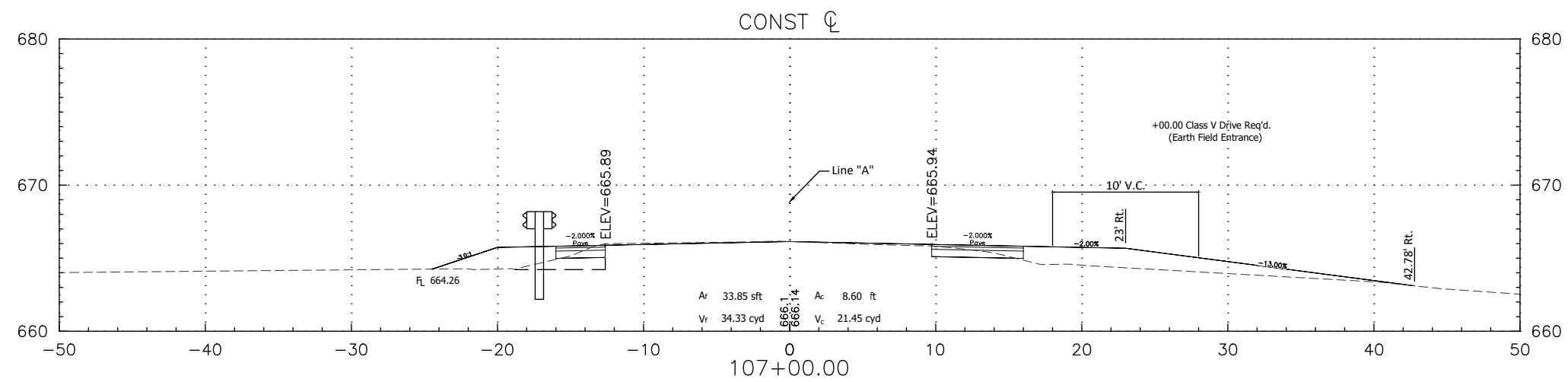
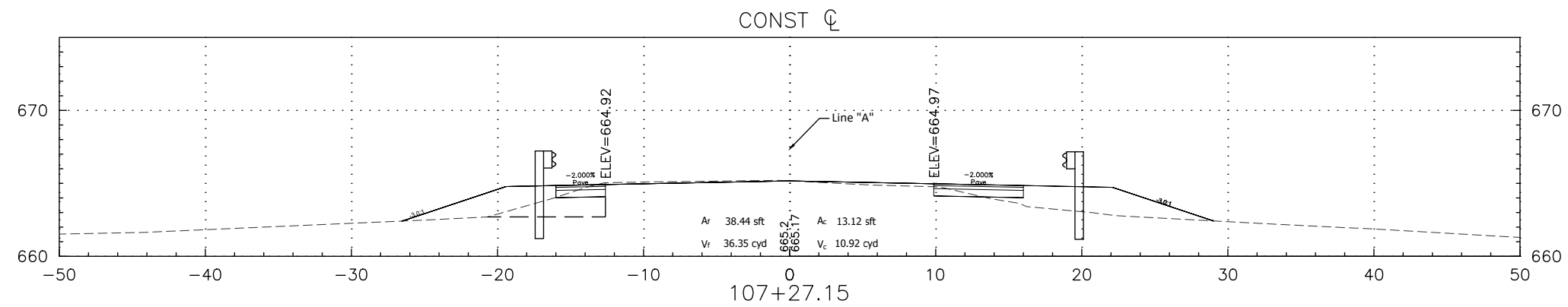
FILE: INMUN2203_RD_CORRIDOR.DWG

RECOMMENDED FOR APPROVAL _____	DESIGN ENGINEER _____	DATE _____
DESIGNED: _____	DRAWN: _____	
CHECKED: _____	CHECKED: _____	

INDIANA
DEPARTMENT OF TRANSPORTATION

CROSS SECTIONS

HORIZONTAL SCALE	BRIDGE FILE
1" = 5'	N/A
VERTICAL SCALE	DESIGNATION
1" = 5'	2200992
SURVEY BOOK	SHEETS
N/A	14 of 20
CONTRACT	PROJECT
R-45552	2200992



PLOTTED: Thursday, April 18, 2024 10:09:31 AM

FILE: INMUN2203_RD_CORRIDOR.DWG

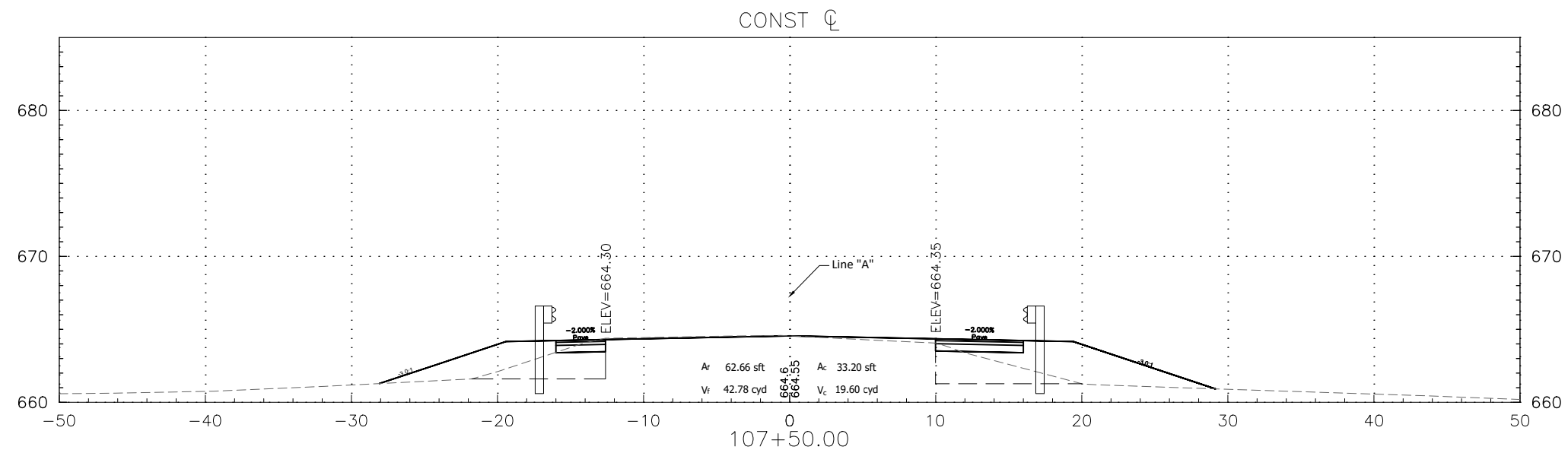
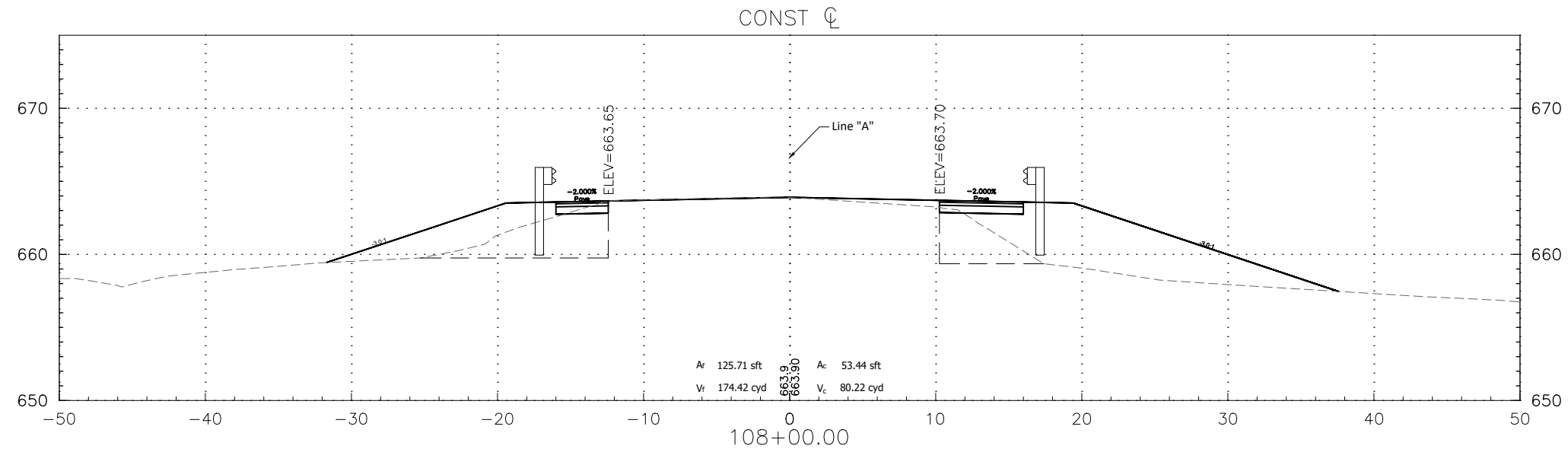
RECOMMENDED FOR APPROVAL _____
 DESIGN ENGINEER DATE _____

DESIGNED: _____ DRAWN: _____
 CHECKED: _____ CHECKED: _____

INDIANA
DEPARTMENT OF TRANSPORTATION

CROSS SECTIONS

HORIZONTAL SCALE	BRIDGE FILE
1" = 5'	N/A
VERTICAL SCALE	DESIGNATION
1" = 5'	2200992
SURVEY BOOK	SHEETS
N/A	15 of 20
CONTRACT	PROJECT
R-45552	2200992



PLOTTED: Thursday, April 18, 2024 10:09:32 AM

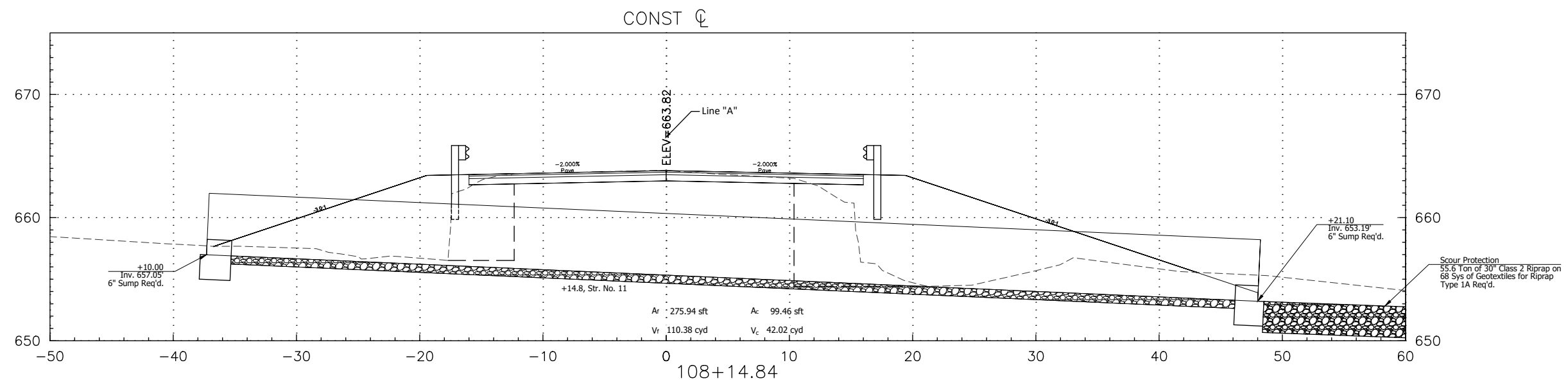
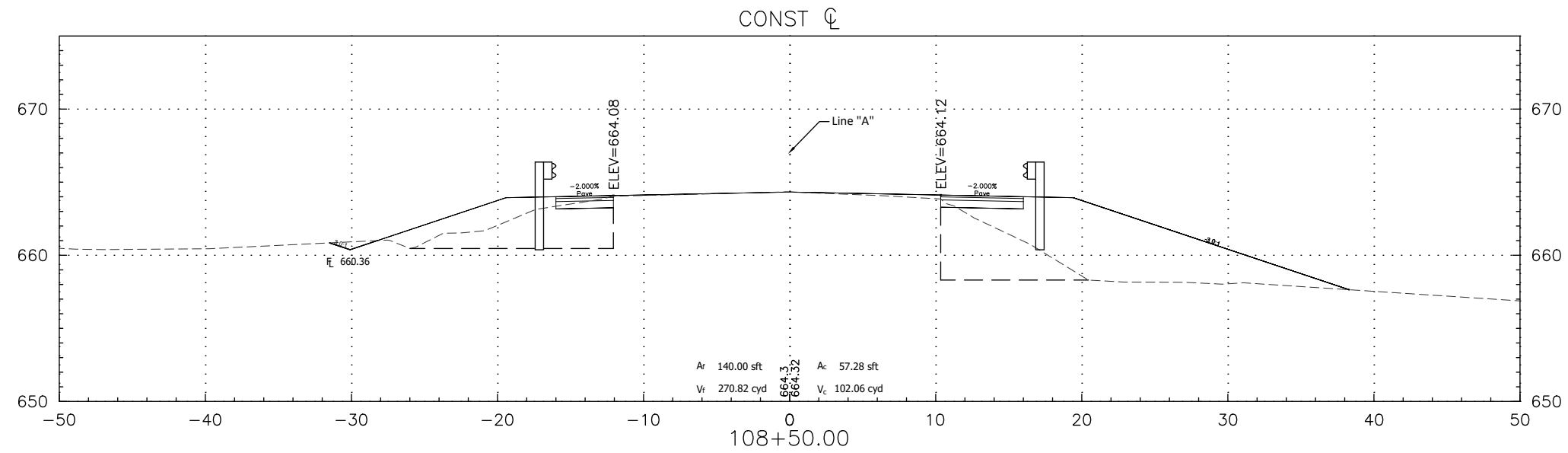
FILE: INMUN2203_RD_CORRIDOR.DWG

RECOMMENDED FOR APPROVAL _____	DESIGN ENGINEER _____	DATE _____
DESIGNED: _____	DRAWN: _____	
CHECKED: _____	CHECKED: _____	

**INDIANA
DEPARTMENT OF TRANSPORTATION**

CROSS SECTIONS

HORIZONTAL SCALE 1" = 5'	BRIDGE FILE N/A
VERTICAL SCALE 1" = 5'	DESIGNATION 2200992
SURVEY BOOK N/A	SHEETS 16 of 20
CONTRACT R-45552	PROJECT 2200992



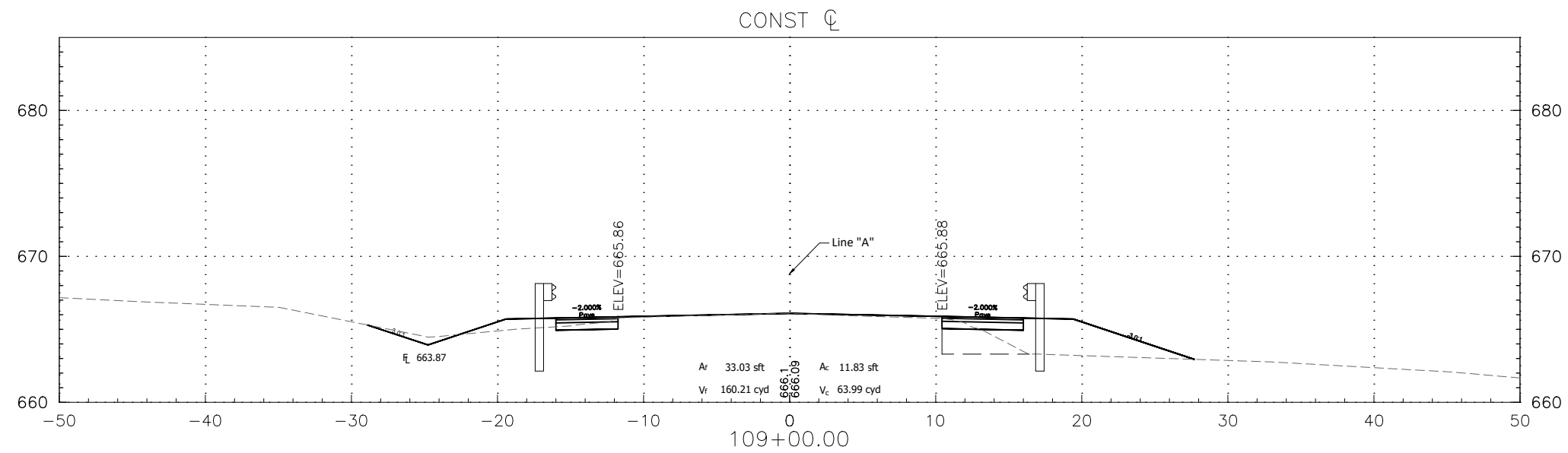
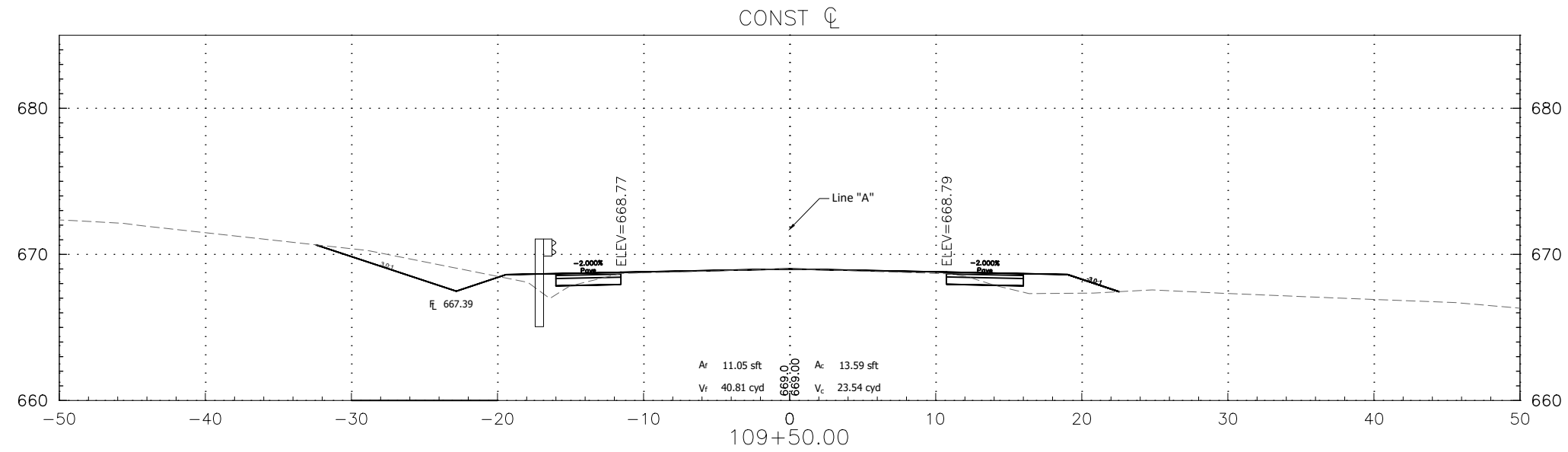
PLOTTED: Thursday, April 18, 2024 10:09:33 AM

FILE: INMUN2203_RD_CORRIDOR.DWG

RECOMMENDED FOR APPROVAL _____	DESIGN ENGINEER _____	DATE _____
DESIGNED: _____	DRAWN: _____	
CHECKED: _____	CHECKED: _____	

INDIANA DEPARTMENT OF TRANSPORTATION
CROSS SECTIONS

HORIZONTAL SCALE 1" = 5'	BRIDGE FILE N/A
VERTICAL SCALE 1" = 5'	DESIGNATION 2200992
SURVEY BOOK N/A	SHEETS 17 of 20
CONTRACT R-45552	PROJECT 2200992



PLOTTED: Thursday, April 18, 2024 10:09:34 AM

FILE: INMUN2203_RD_CORRIDOR.DWG

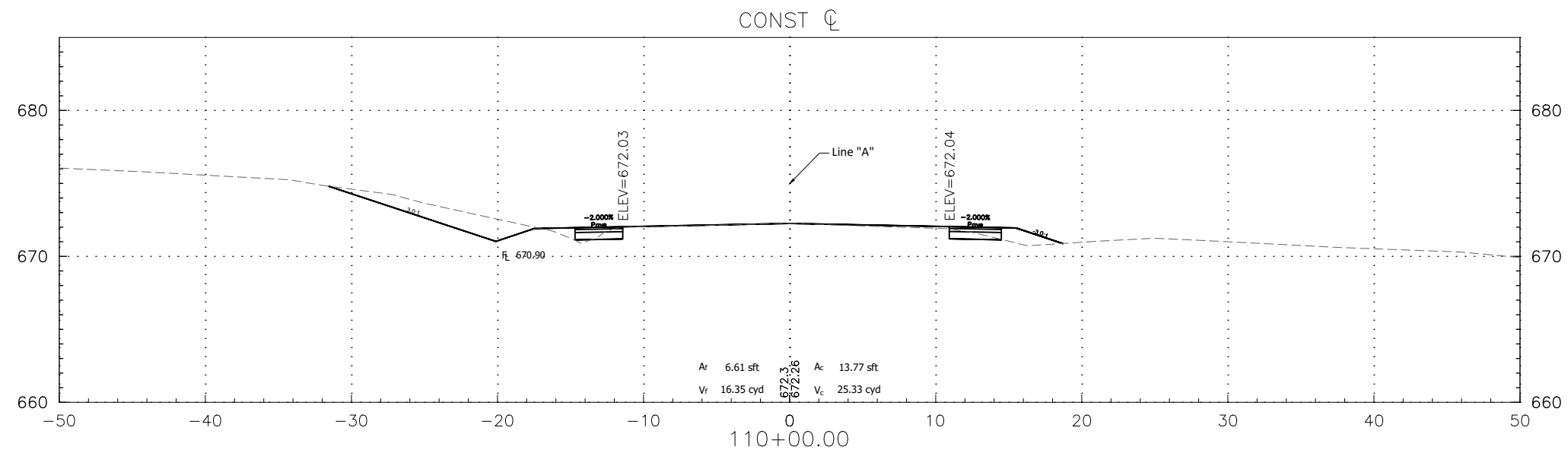
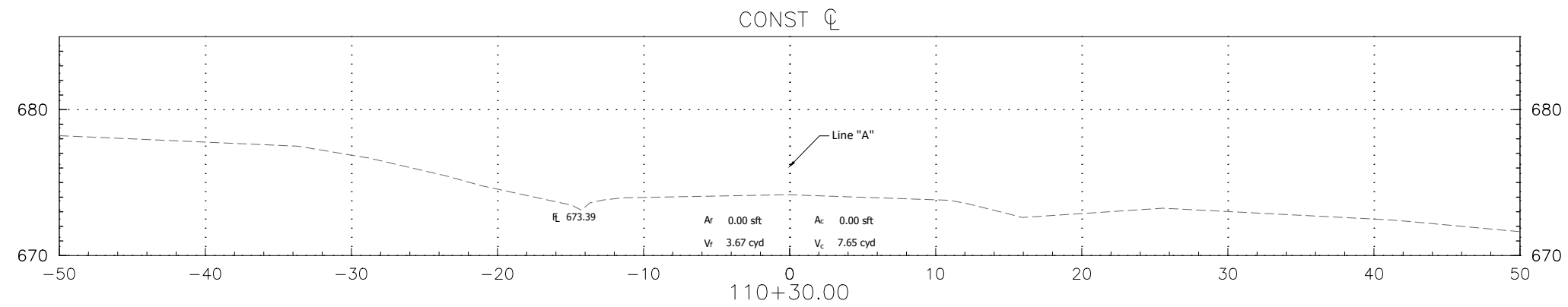
RECOMMENDED FOR APPROVAL _____
 DESIGN ENGINEER DATE _____

DESIGNED: _____ DRAWN: _____
 CHECKED: _____ CHECKED: _____

**INDIANA
DEPARTMENT OF TRANSPORTATION**

CROSS SECTIONS

HORIZONTAL SCALE	BRIDGE FILE
1" = 5'	N/A
VERTICAL SCALE	DESIGNATION
1" = 5'	2200992
SURVEY BOOK	SHEETS
N/A	18 of 20
CONTRACT	PROJECT
R-45552	2200992



PLOTTED: Thursday, April 18, 2024 10:09:35 AM

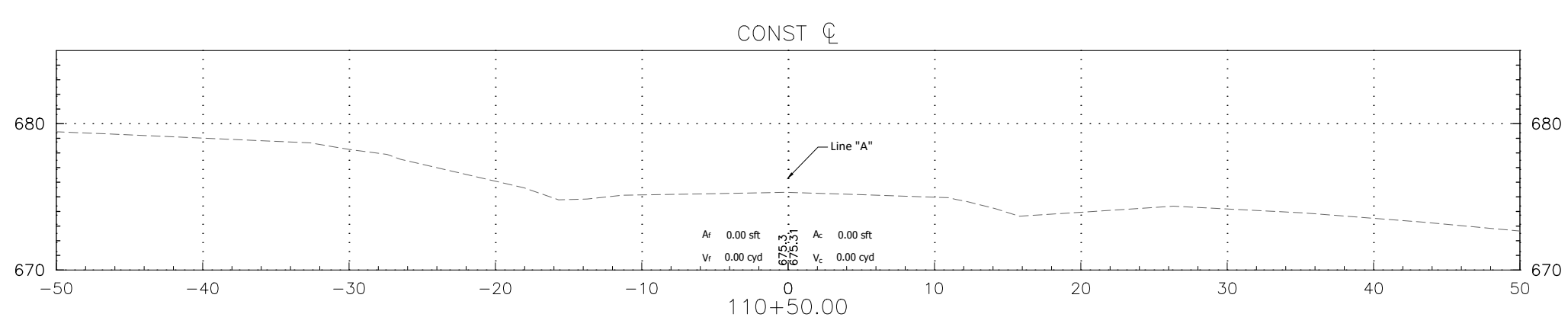
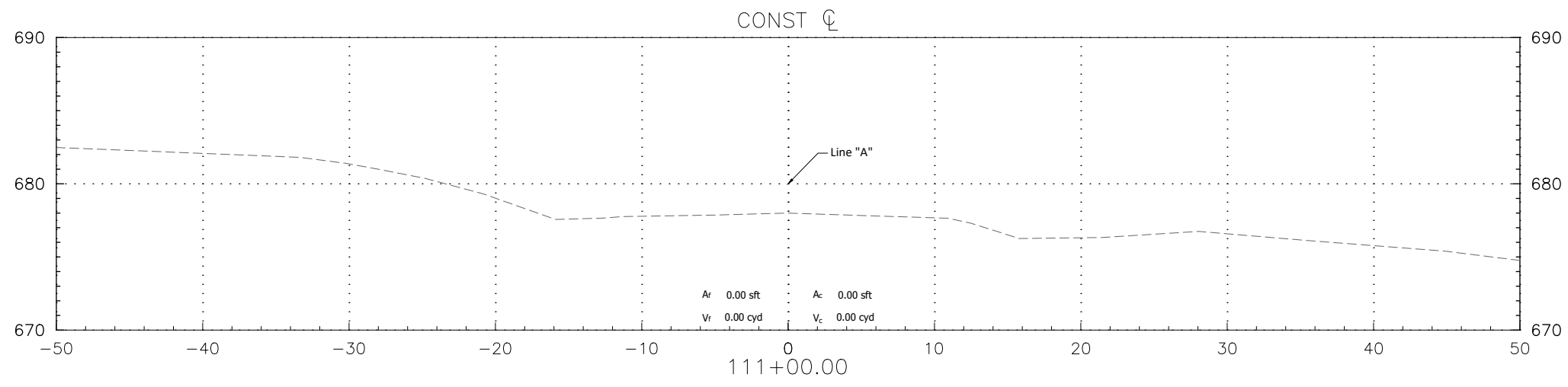
FILE: INMUN2203_RD_CORRIDOR.DWG

RECOMMENDED FOR APPROVAL _____	
DESIGN ENGINEER	DATE
DESIGNED: _____	DRAWN: _____
CHECKED: _____	CHECKED: _____

**INDIANA
DEPARTMENT OF TRANSPORTATION**

CROSS SECTIONS

HORIZONTAL SCALE	BRIDGE FILE
1" = 5'	N/A
VERTICAL SCALE	DESIGNATION
1" = 5'	2200992
SURVEY BOOK	SHEETS
N/A	19 of 20
CONTRACT	PROJECT
R-45552	2200992



PLOTTED: Thursday, April 18, 2024 10:09:37 AM

FILE: INMUN2203_RD_CORRIDOR.DWG

RECOMMENDED FOR APPROVAL _____	DESIGN ENGINEER _____	DATE _____
DESIGNED: _____	DRAWN: _____	
CHECKED: _____	CHECKED: _____	

**INDIANA
DEPARTMENT OF TRANSPORTATION**

CROSS SECTIONS

HORIZONTAL SCALE 1" = 5'	BRIDGE FILE N/A
VERTICAL SCALE 1" = 5'	DESIGNATION 2200992
SURVEY BOOK N/A	SHEETS 20 of 20
CONTRACT R-45552	PROJECT 2200992