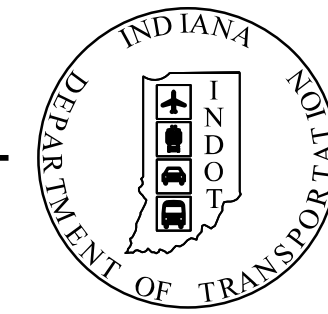


PROJECT	DESIGNATION
2000090	2000090
CONTRACT	
R-43371	

INDIANA DEPARTMENT OF TRANSPORTATION



ROAD PLANS U.S. 52

ROUTE: U.S. 52 FROM: RP 166+00.32 TO: RP 167+00.57

PROJECT NO. 2000090

P.E. 2000090

R/W 2000090

CONST. 2000090

PROJECT DESCRIPTION

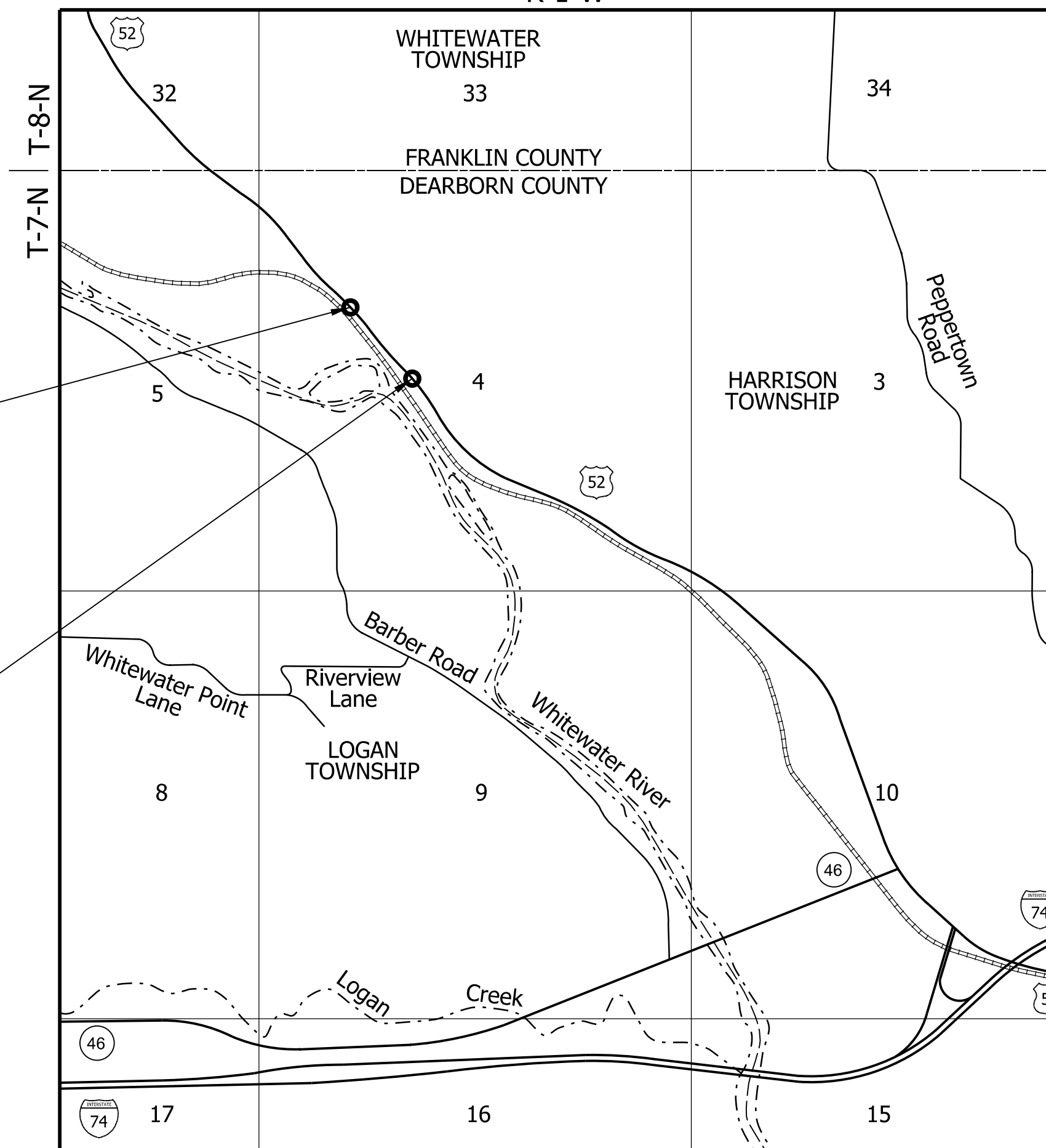
Roadway resurfacing and slide correction improvements on U.S. 52 East approximately 1.4 miles west of SR 46 and approximately 4 miles northwest of West Harrison in Section 4, Harrison Township, Dearborn County, Seymour District, Indiana.

R-1-W

**STAGE 3 SUBMITTAL
MARCH 22, 2024**

BEGIN PROJECT
PROJECT NO. 2000090
P.O.T. STA. 104+50.00
LINE "PR-A"

END PROJECT
PROJECT NO. 2000090
P.O.T. STA. 111+75.00
LINE "PR-A"



R-1-W
LOCATION MAP
HARRISON TOWNSHIP,
DEARBORN COUNTY

TRAFFIC DATA U.S. 52		
A.A.D.T.	(2025)	4,480 V.P.D.
A.A.D.T.	(2045)	4,591 V.P.D.
D.H.V.	(2045)	9.78%
DIRECTIONAL DISTRIBUTION		50.14%
TRUCKS		12.27% OF AADT 9.40% OF DHV

DESIGN DATA U.S. 52	
DESIGN SPEED	55 MPH
PROJECT DESIGN CRITERIA	3R (NON-FREEWAY)
FUNCTIONAL CLASSIFICATION	PRINCIPAL ARTERIAL
RURAL/URBAN	RURAL
TERRAIN	ROLLING
ACCESS CONTROL	NONE



LATITUDE: 39°17'55" N LONGITUDE: 84°53'17" W

GROSS LENGTH: 0.14 MI.
NET LENGTH: 0.14 MI.
MAX. GRADE: 3.08%

HYDROLOGIC UNIT CODE: 050800030805

INDIANA DEPARTMENT OF TRANSPORTATION
STANDARD SPECIFICATIONS DATED 2024
TO BE USED WITH THESE PLANS

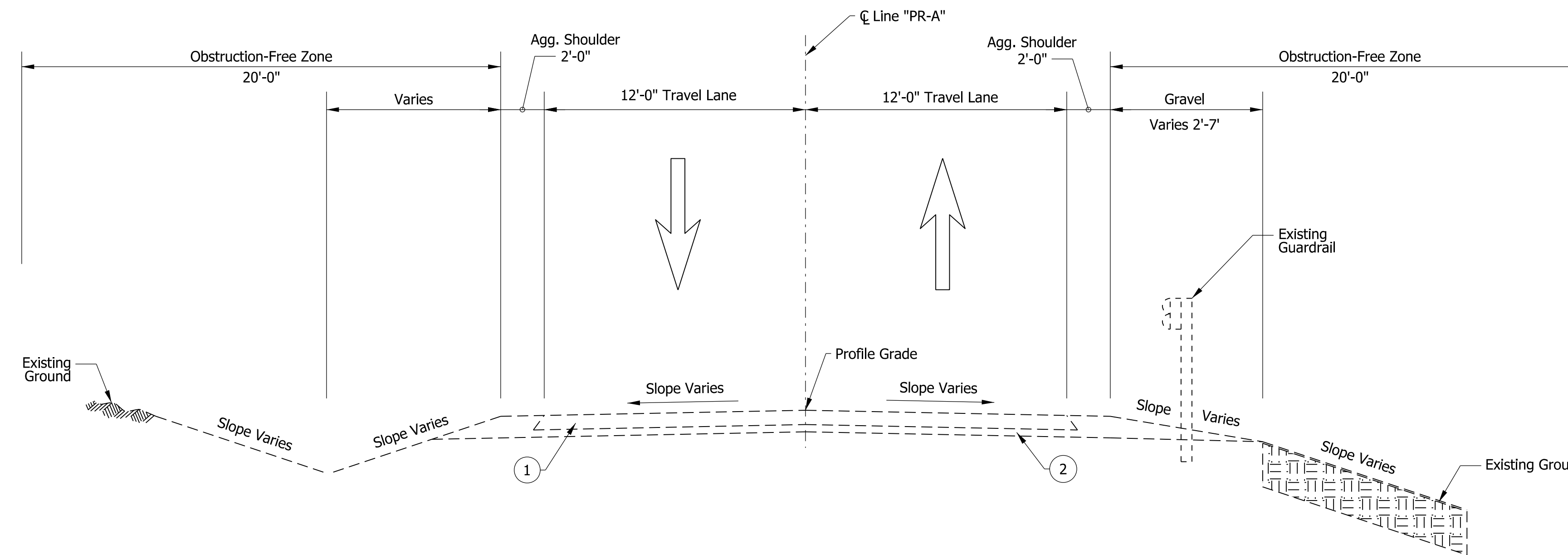


THE HNTB COMPANIES
INFRASTRUCTURE SOLUTIONS
111 MONUMENT CIRCLE
SUITE 1200
INDIANAPOLIS, IN 46204-5178

DRAFT
NOT FOR CONSTRUCTION

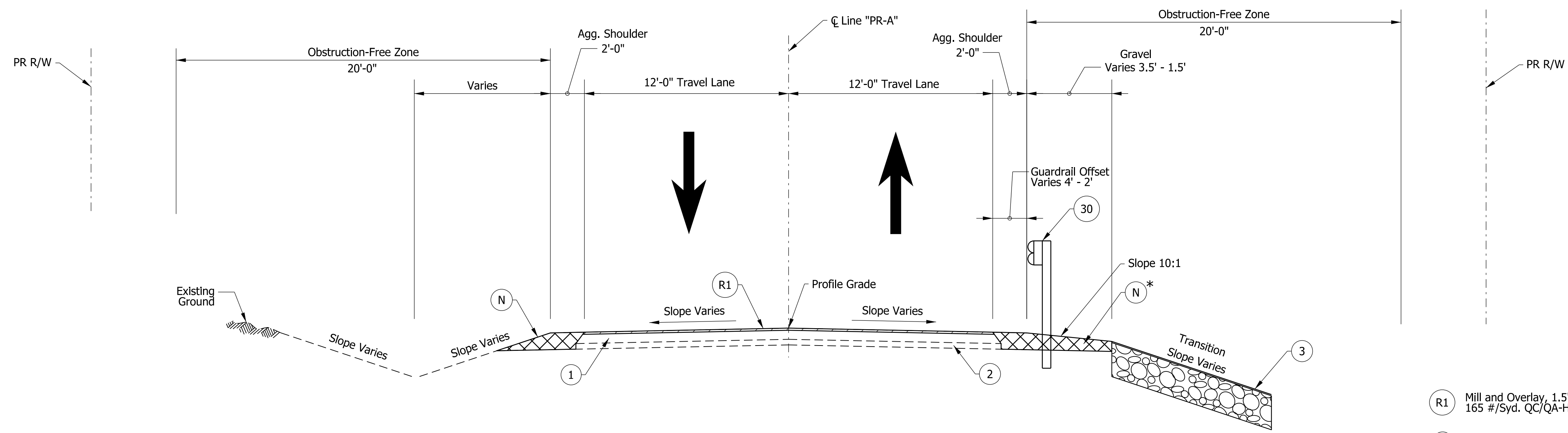
PLANS PREPARED BY: HNTB INDIANA, INC. (317) 636-4682 PHONE NUMBER
CERTIFIED BY: _____ DATE _____
APPROVED FOR LETTING: _____ DATE _____
INDIANA DEPARTMENT OF TRANSPORTATION

BRIDGE FILE	
DESIGNATION	
SURVEY BOOK	SHEETS
CONTRACT	of PROJECT



U.S. 52 EXISTING TYPICAL SECTION
 STA. 104+00.00 "PR-A" TO STA. 111+75.00 "PR-A"

- ① Existing HMA, 8"
- ② Existing Aggregate Base, 4"



U.S. 52 INCIDENTAL CONSTRUCTION TYPICAL SECTION
 STA. 104+00 "PR-A" TO STA. 104+50.00 "PR-A"
 STA. 111+75.00 "PR-A" TO STA. 111+81.00 "PR-A"

- R1 Mill and Overlay, 1.5" Composed of:
165 #/Syd. QC/QA-HMA 3, 58H, Surface, 9.5 mm
- ① Existing HMA, 8"
- ② Existing Aggregate Base, 4"
- ③ Riprap, Revetment, on Geotextile for Riprap, Type 2A
- N Compacted Aggregate, No. 53
- 30 Guardrail MGS W-Beam
- * Subgrade Treatment added to improve slope integrity.

5/16/2024 1:39:40 pm
 model:Sheet1
 file: \\indw01\289\projects\28628\indct-s_2021_omcall_rfp-2025\030_us52_sifiles_des\2000090_2001948\cadd\cadd\78628-rd-s-b01.dgn

DRAFT
 NOT FOR CONSTRUCTION

RECOMMENDED FOR APPROVAL	DESIGN ENGINEER	DATE
DESIGNED: ICH	DRAWN: AJM	
CHECKED: DLG	CHECKED: DLG	

INDIANA DEPARTMENT OF TRANSPORTATION	
TYPICAL SECTIONS	

HORIZONTAL SCALE	BRIDGE FILE
1/4"=1'-0"	N/A
VERTICAL SCALE	DESIGNATION
N/A	2000090
SURVEY BOOK	SHEETS TYP-01
ELECTRONIC	6 of 35
CONTRACT	PROJECT
R-43371	2000090

Soil Nail Wall Height = <i>h</i>	
Stations	Wall Height (ft)
104+50 to 111+75	10

1 2% NORMAL CROWN - STA. 107+53.00 "PR-A" TO STA. 108+25.00 "PR-A"

U.S. 52 TYPICAL SECTION
 STA. 104+50.00 "PR-A" TO STA. 105+80.00 "PR-A"
 STA. 106+20.00 "PR-A" TO STA. 111+75.00 "PR-A"

- D1 165 #/Syd. QC/QA-HMA 3, 58H, Surface, 9.5 mm, on Widening with HMA, Type C consisting of:
 275 #/Syd. HMA Intermediate, Type C, on
 880 #/Syd. HMA Base, Type C, on
 Subgrade Treatment, Type IC with Underlain Biaxial Geogrid
 - D2 165 #/Syd. QC/QA-HMA 3, 58H, Surface, 9.5 mm, on
 275 #/Syd. QC/QA-HMA 3, 58H, Intermediate, 19.0 mm, on
 880 #/Syd. QC/QA-HMA 3, 58S, Base, 25.0 mm (placed in two lifts), on
 Subgrade Treatment, Type IC with Underlain Biaxial Geogrid
 - R1 Mill and Overlay, 1.5" Composed of:
 165 #/Syd. QC/QA-HMA 3, 58H, Surface, 9.5 mm
 - N Compacted Aggregate, No. 53
 - 26A Mulched Seeding, Type R
 - 27 Riprap, Class 1, on Geotextile for Riprap, Type 1A
 - 30 Guardrail MGS W-Beam
 - E Erosion Control Blanket
 - W Soil Nail Wall, See Detail 1
- * Subgrade Treatment added to improve slope integrity.

U.S. 52 TYPICAL SECTION
 STA. 105+80.00 "PR-A" TO STA. 106+20.00 "PR-A"

2 Slope varies 4% to 2:1 from Sta. 105+80 "PR-A" to Sta. 105+90 "PR-A"
 Slope equals 2:1 from Sta. 105+90 "PR-A" to 106+10 "PR-A"
 Slope varies 2:1 to 4% from Sta. 106+10 "PR-A" to Sta. 106+20 "PR-A"

DRAFT
 NOT FOR CONSTRUCTION

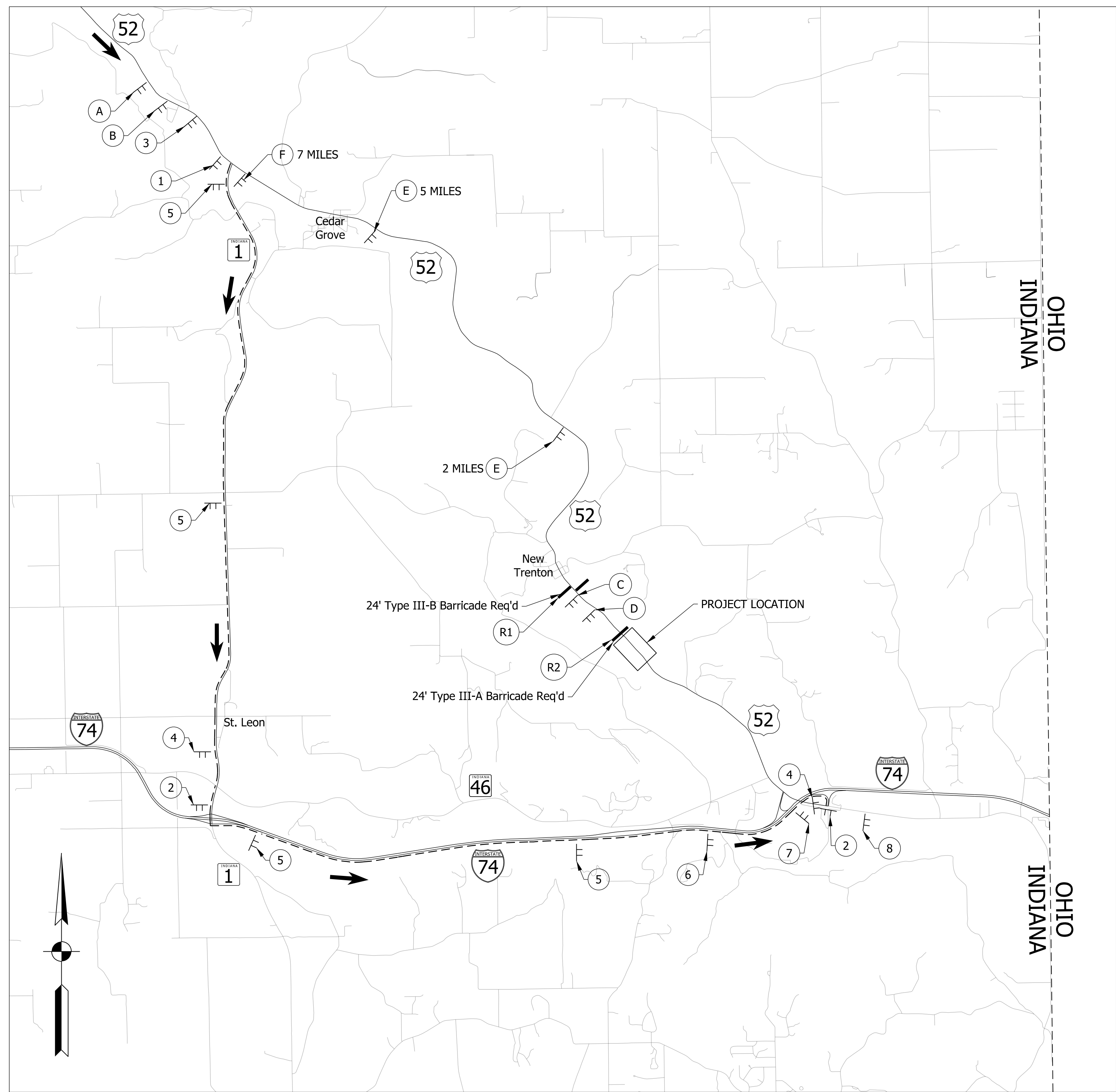
RECOMMENDED FOR APPROVAL	DESIGN ENGINEER	DATE
DESIGNED: ICH	DRAWN: AJM	
CHECKED: DLG	CHECKED: DLG	

INDIANA
 DEPARTMENT OF TRANSPORTATION

TYPICAL SECTIONS

HORIZONTAL SCALE	BRIDGE FILE
1/4"=1'-0"	N/A
VERTICAL SCALE	DESIGNATION
N/A	2000090
SURVEY BOOK	SHEETS TYP-02
ELECTRONIC	7 of 35
CONTRACT	PROJECT
R-43371	2000090

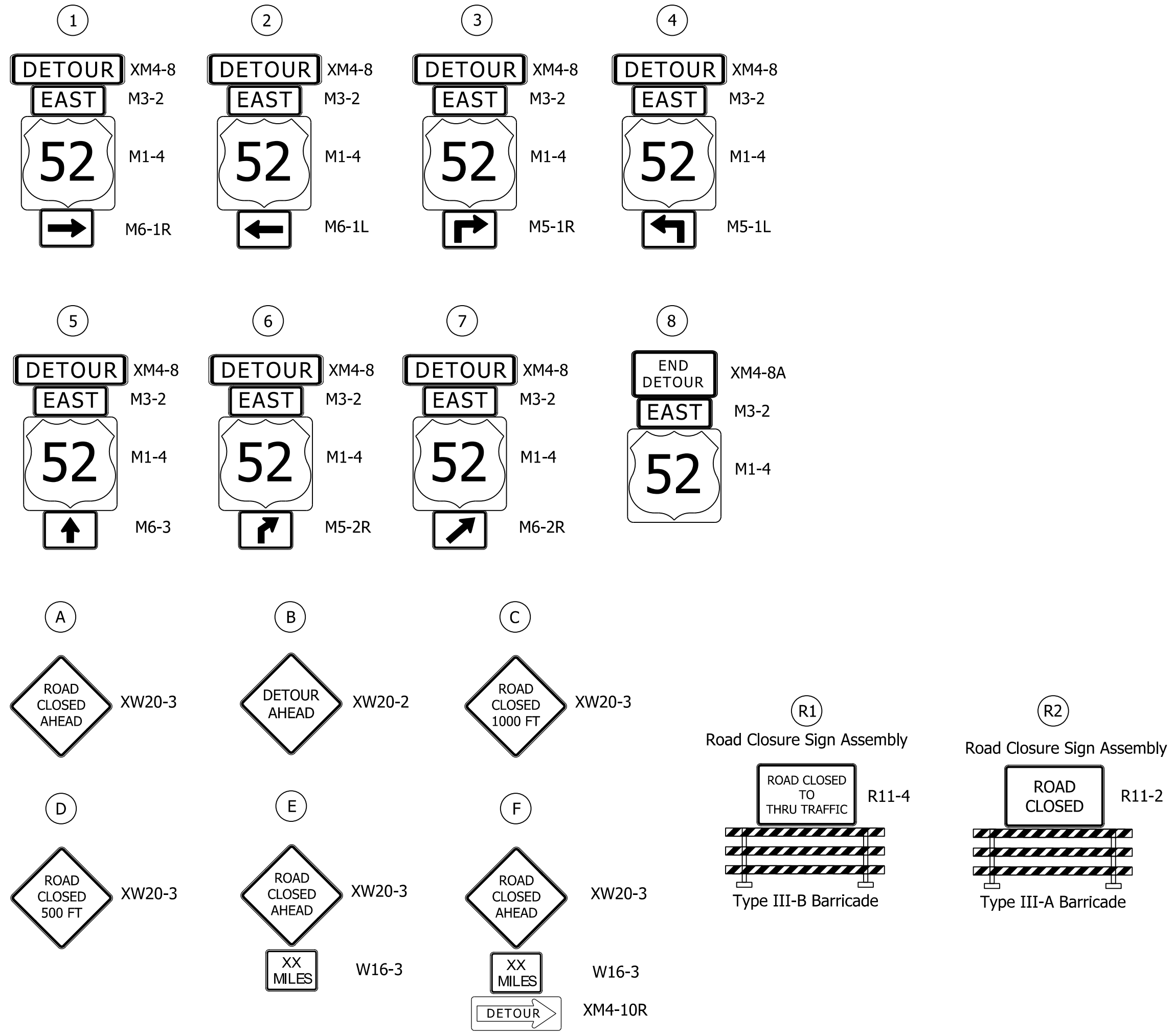
ihill 5/16/2024 1:39:43 pm
 model:Sheet2
 file: \\india\01289\projects\78628\india-s_2021\omcall_rfp-2005\030_us52_silfilee_des\2000090_2001948\cadd\cids\78628-rd-s-b01.dgn



NOTE TO REVIEWER
 DETAILS OF A LOCAL DETOUR WILL BE DISCUSSED AT A LATER SUBMITTAL

Detour

1. Project area along US-52 shall be closed to thru traffic. Detour eastbound thru traffic south on SR-1 to I-74 East. Detour westbound thru traffic to I-74 West to SR-1 North.
2. Detour shall remain in place throughout construction.
3. Contractor shall maintain temporary access to all properties during construction.
4. For detour sign spacing see Standard Detail E 801-TCDDT-04.



Summary of Detour Quantities		
Item	Unit	Total Quantity
Detour Route Marker Assembly	EACH	13
Road Closure Sign Assembly	EACH	2
Construction Sign, A	EACH	7
Construction Sign, B	EACH	4
Barricade, III-A	LFT	24
Barricade, III-B	LFT	24

LEGEND

- - - Detour Route
- Detour Route Sign Assembly
- Type III-A or Type III-B Barricade

5/16/2024 1:40:03 pm
 model:Sheet1
 file: \\indw01\289\projects\78628\ndet-s_2021\omcal\mp-2005\030_us52_sifiles_des\2000090_2001948\cad\cids\78628-rd-s-mot01.dgn

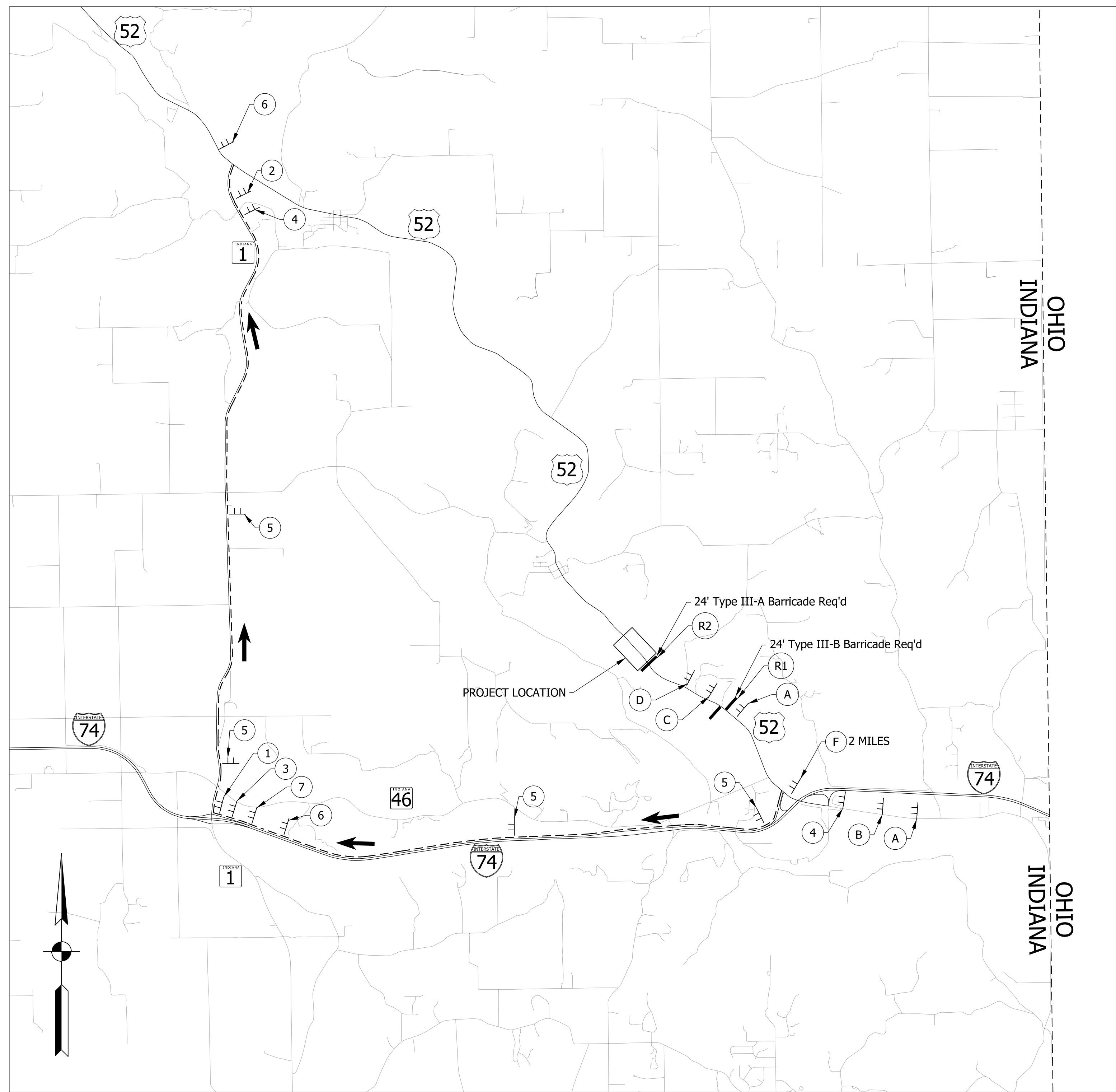
DRAFT
 NOT FOR CONSTRUCTION

RECOMMENDED FOR APPROVAL _____	DESIGN ENGINEER _____	DATE _____
DESIGNED: _____ ICH _____	DRAWN: _____ AJM _____	
CHECKED: _____ DLG _____	CHECKED: _____ DLG _____	

INDIANA
DEPARTMENT OF TRANSPORTATION

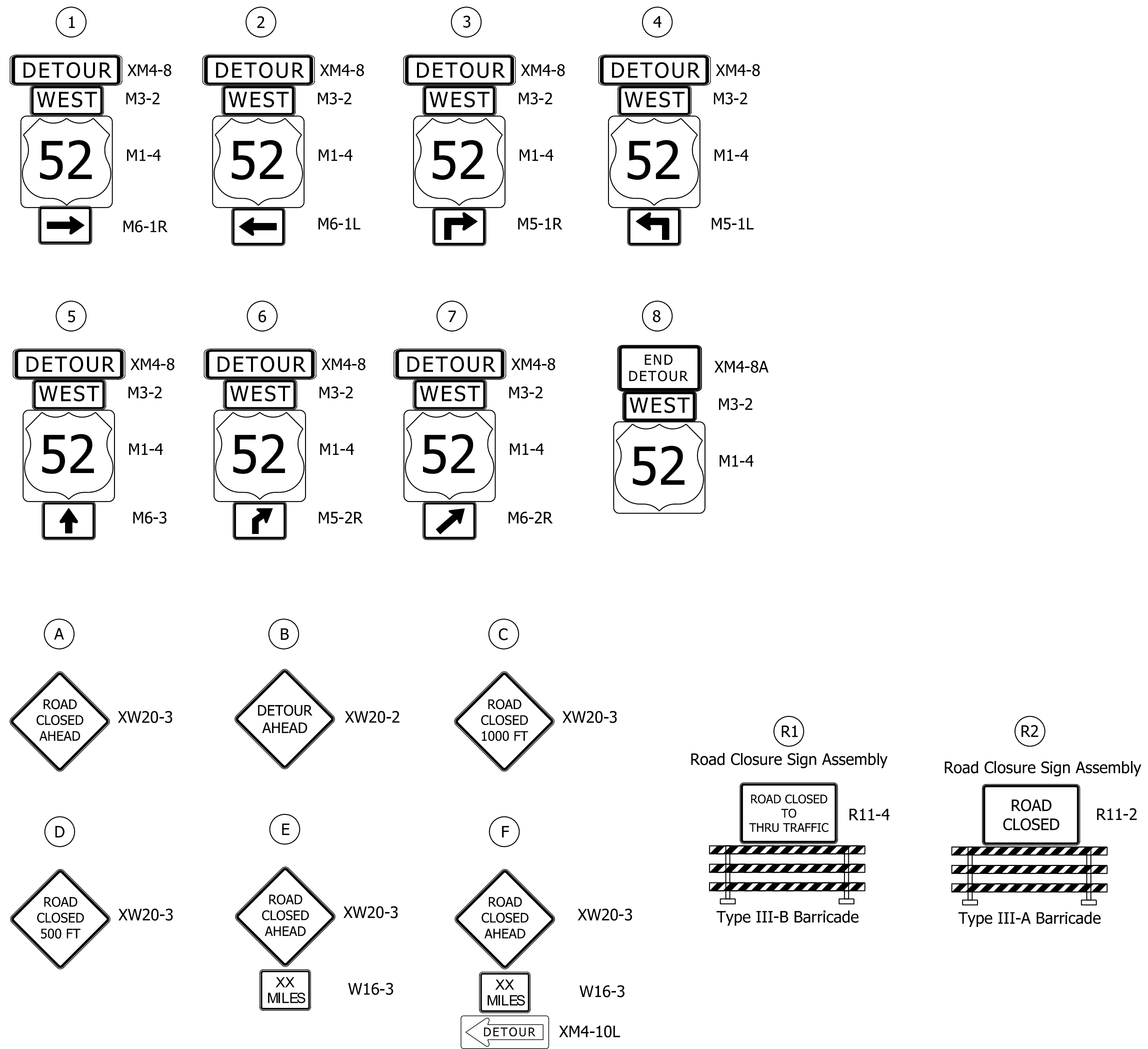
DETOUR
U.S. 52 - EASTBOUND

HORIZONTAL SCALE	BRIDGE FILE
N/A	N/A
VERTICAL SCALE	DESIGNATION
N/A	2000090
SURVEY BOOK	SHEETS MOT-01
ELECTRONIC	10 of 35
CONTRACT	PROJECT
R-43371	2000090



NOTE TO REVIEWER
 DETAILS OF A LOCAL DETOUR WILL BE DISCUSSED AT A LATER SUBMITTAL

- Detour**
1. Project area along US-52 shall be closed to thru traffic. Detour eastbound thru traffic south on SR-1 to I-74 East. Detour westbound thru traffic to I-74 West to SR-1 North.
 2. Detour shall remain in place throughout construction.
 3. Contractor shall maintain temporary access to all properties during construction.
 4. For detour sign spacing see Standard Detail E 801-TCDT-04.



Summary of Detour Quantities		
Item	Unit	Total Quantity
Detour Route Marker Assembly	EACH	12
Road Closure Sign Assembly	EACH	2
Construction Sign, A	EACH	6
Barricade, III-A	LFT	24
Barricade, III-B	LFT	24

- LEGEND**
- - - Detour Route
 - ┌─┐ Detour Route Sign Assembly
 - ▬ Type III-A or Type III-B Barricade

5/16/2024 1:40:07 pm
 model:Sheet2
 file: \\indw001\289\projects\78628\ndet-s_2021_omcall_rfp-2025\030_us52_sifiles_des\2000090_2001948\cad\cids\78628-rd-s-mot01.dgn

DRAFT
 NOT FOR CONSTRUCTION

RECOMMENDED FOR APPROVAL _____	DESIGN ENGINEER _____	DATE _____
DESIGNED: _____ ICH _____	DRAWN: _____ AJM _____	
CHECKED: _____ DLG _____	CHECKED: _____ DLG _____	

INDIANA
DEPARTMENT OF TRANSPORTATION

DETOUR
U.S. 52 - WESTBOUND

HORIZONTAL SCALE	BRIDGE FILE
N/A	N/A
VERTICAL SCALE	DESIGNATION
N/A	2000090
SURVEY BOOK	SHEETS MOT-02
ELECTRONIC	11 of 35
CONTRACT	PROJECT
R-43371	2000090

Note:
All R/W described from Line "A" unless noted otherwise.
See Location Control Route Survey Plat and Plat No. 1 for
Line "A" and Geometric Ties to Line "PR-A"

Sec. 4, T-7-N, R-1-W
Harrison Township
Dearborn County

Sec. 4, T-7-N, R-1-W
Harrison Township
Dearborn County

104+00 105+00 106+00 107+00 108+00 109+00

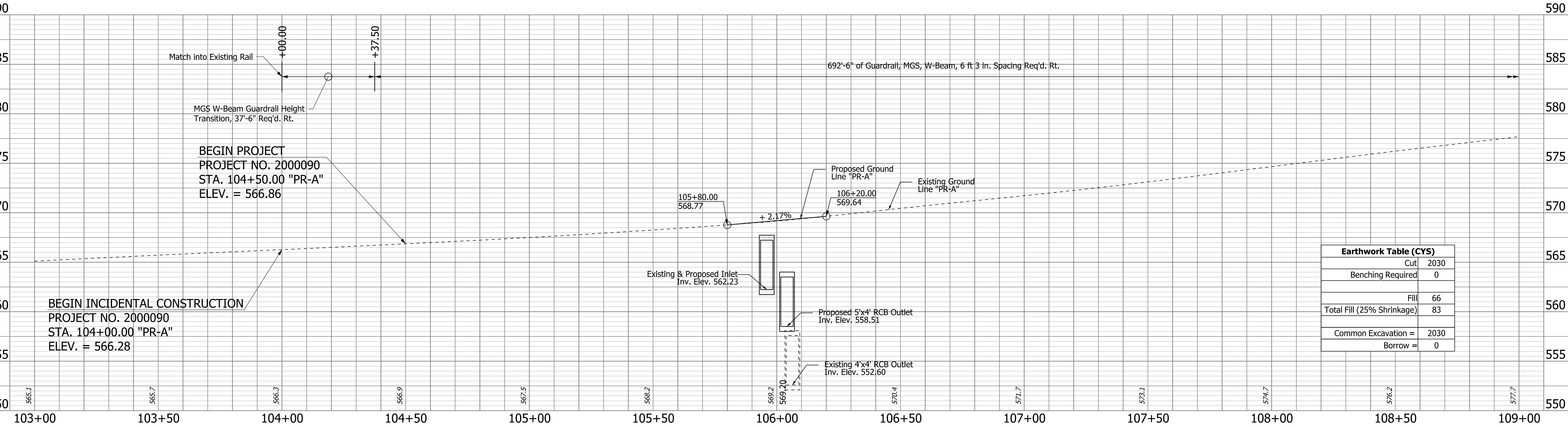
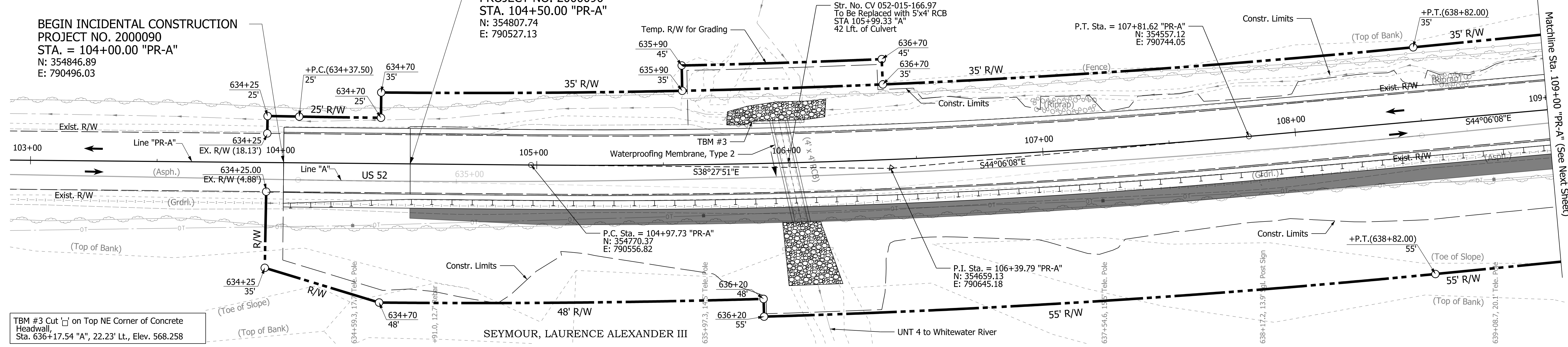
Electric Easement in favor of Whitewater
Valley Rural Electric Membership
Corporation (precise location unknown)

DILLMAN, RALPH ET UX.

BEGIN PROJECT
PROJECT NO. 2000090
STA. 104+50.00 "PR-A"
N: 354807.74
E: 790527.13

BEGIN INCIDENTAL CONSTRUCTION
PROJECT NO. 2000090
STA. = 104+00.00 "PR-A"
N: 354846.89
E: 790496.03

CURVE DATA
PI Sta. = 106+39.79 "PR-A"
Delta = 5°38'17" Lt.
R = 2885.00 ft.
T = 142.06 ft.
L = 283.90 ft.
E = 3.50 ft.



Earthwork Table (CYS)	
Cut	2030
Benching Required	0
Fill	66
Total Fill (25% Shrinkage)	83
Common Excavation	2030
Borrow	0

NOTE TO REVIEWER

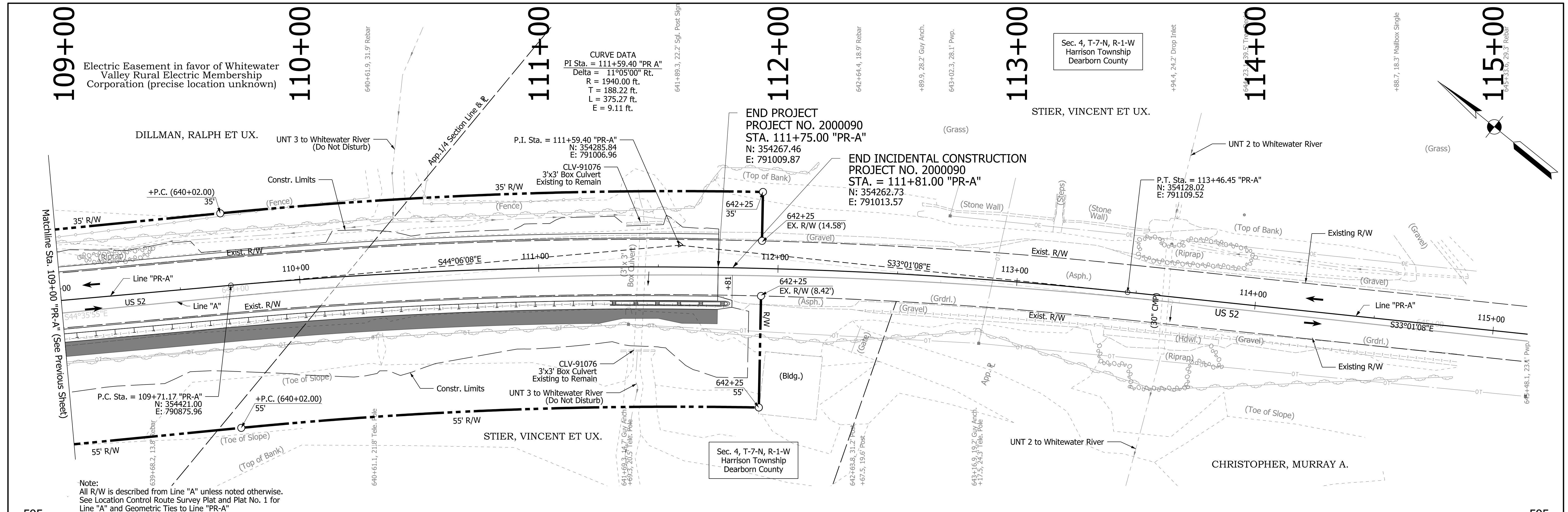
Line A is the recorded survey line; however, it does not follow the existing center line of the road. For constructability reasons a new alignment has been created called Line PR-A which closely follows the existing center line of the roadway. Because Line A is recorded, all right of way and existing topo is called from that alignment. Proposed work is referenced to Line PR-A to maintain a constant offset from the center line of the roadway to the soil nail wall. Stationing is shifted to minimize confusion between the two alignments.

DRAFT
NOT FOR CONSTRUCTION

RECOMMENDED FOR APPROVAL _____ DATE _____
DESIGN ENGINEER _____
DESIGNED: ICH DRAWN: AJM
CHECKED: DLG CHECKED: DLG

INDIANA
DEPARTMENT OF TRANSPORTATION
PLAN & PROFILE
LINE "PR-A"

BRIDGE FILE	
HORIZONTAL SCALE	N/A
VERTICAL SCALE	DESIGNATION
1"=20'	2000090
1"=5'	
SURVEY BOOK	SHEETS PLN-01
ELECTRONIC	12 of 35
CONTRACT	PROJECT
R-43371	2000090



Electric Easement in favor of Whitewater Valley Rural Electric Membership Corporation (precise location unknown)

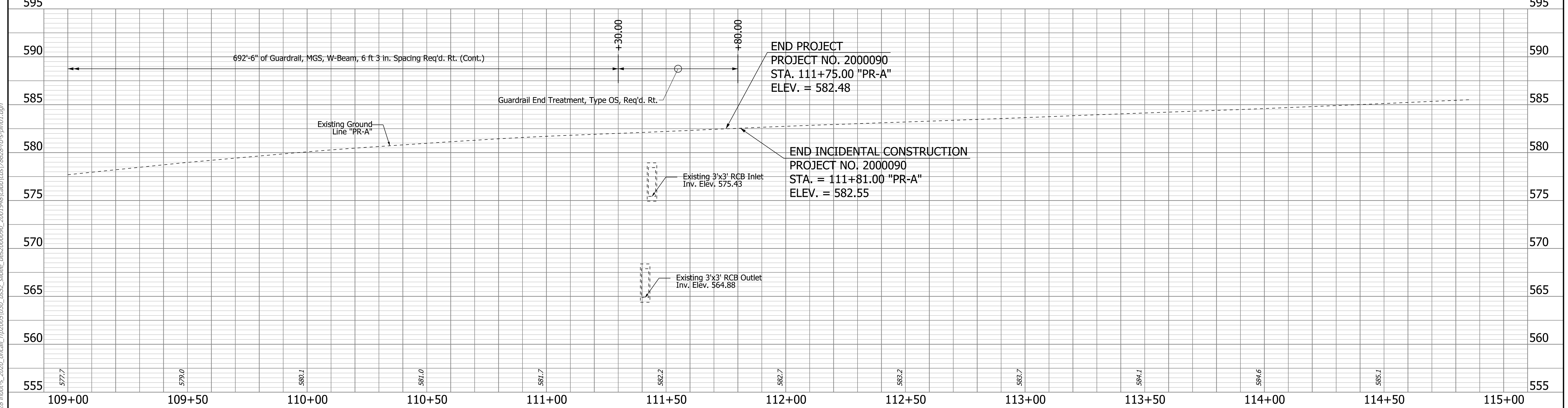
CURVE DATA
 P.I. Sta. = 111+59.40 "PR-A"
 Delta = 11°05'00" Rt.
 R = 1940.00 ft.
 T = 188.22 ft.
 L = 375.27 ft.
 E = 9.11 ft.

END PROJECT
 PROJECT NO. 2000090
 STA. 111+75.00 "PR-A"
 N: 354267.46
 E: 791009.87

END INCIDENTAL CONSTRUCTION
 PROJECT NO. 2000090
 STA. = 111+81.00 "PR-A"
 N: 354262.73
 E: 791013.57

P.T. Sta. = 113+46.45 "PR-A"
 N: 354128.02
 E: 791109.52

Note:
 All R/W is described from Line "A" unless noted otherwise.
 See Location Control Route Survey Plat and Plat No. 1 for Line "A" and Geometric Ties to Line "PR-A"



END PROJECT
 PROJECT NO. 2000090
 STA. 111+75.00 "PR-A"
 ELEV. = 582.48

END INCIDENTAL CONSTRUCTION
 PROJECT NO. 2000090
 STA. = 111+81.00 "PR-A"
 ELEV. = 582.55

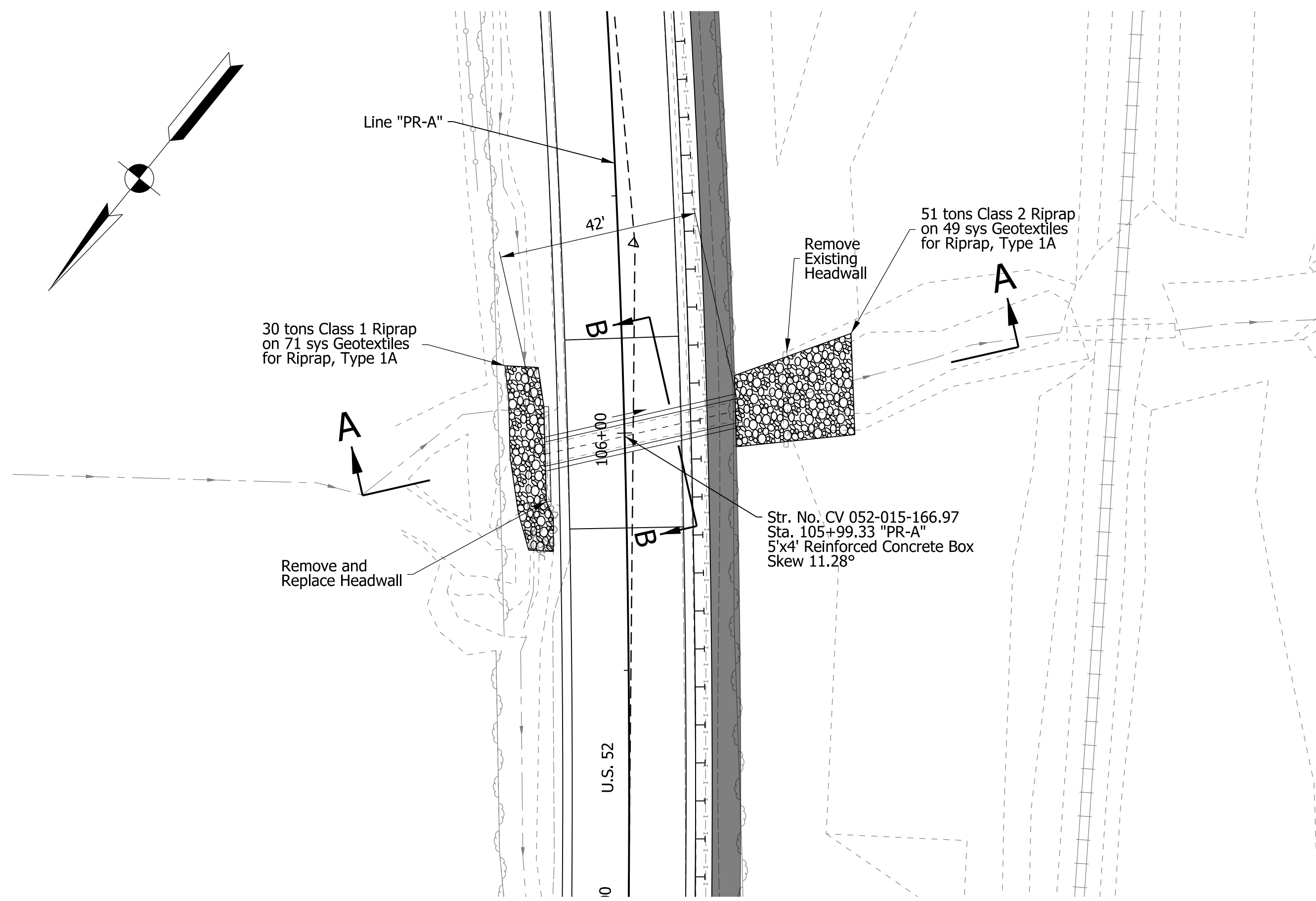
DRAFT
 NOT FOR CONSTRUCTION

RECOMMENDED FOR APPROVAL	DESIGN ENGINEER	DATE
DESIGNED: ICH	DRAWN: AJM	
CHECKED: DLG	CHECKED: DLG	

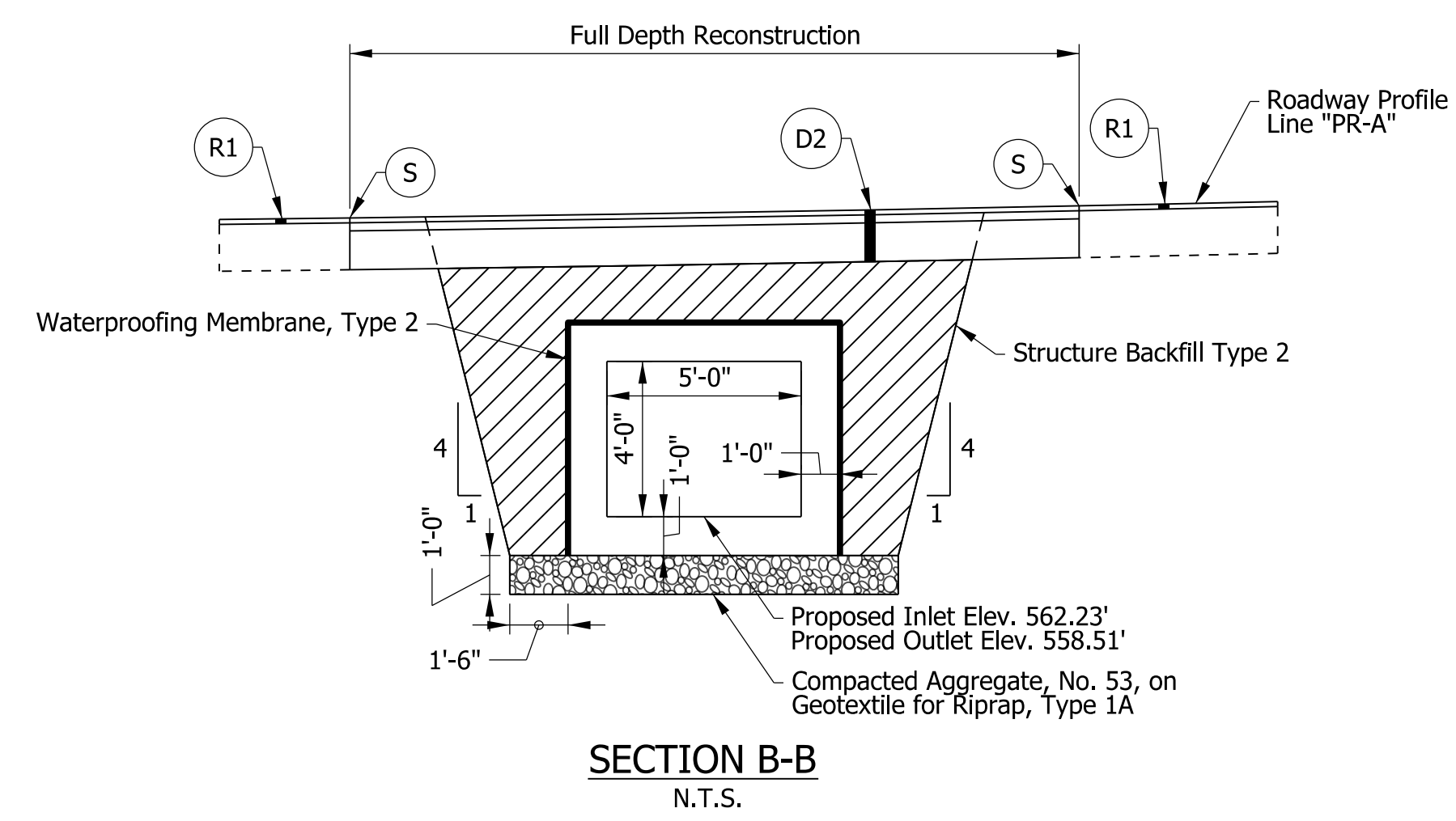
INDIANA DEPARTMENT OF TRANSPORTATION
PLAN & PROFILE
 LINE "PR-A"

HORIZONTAL SCALE	BRIDGE FILE
1"=20'	N/A
VERTICAL SCALE	DESIGNATION
1"=5'	2000090
SURVEY BOOK	SHEETS
ELECTRONIC	13 of 35
CONTRACT	PROJECT
R-43371	2000090

Kleisure
 5/16/2024 1:40:42 pm
 model-sheet2
 file: \\indw001\289\projects\78628\indw-s_2024_omcall_rfp-2005\030_us52_silfee_des\2000090_2001948\cad\cids\78628-rd-s-pln01.dgn

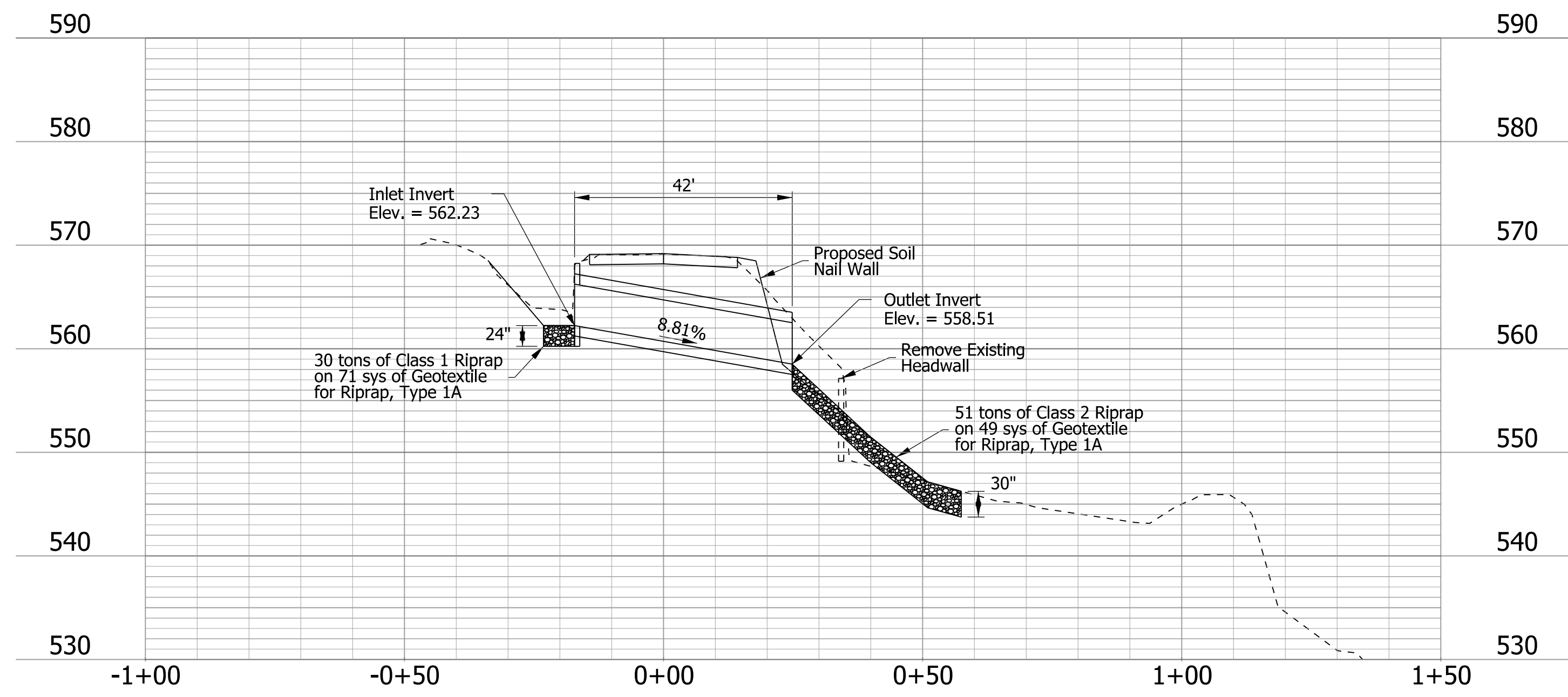


PLAN
Scale: 1"=20'

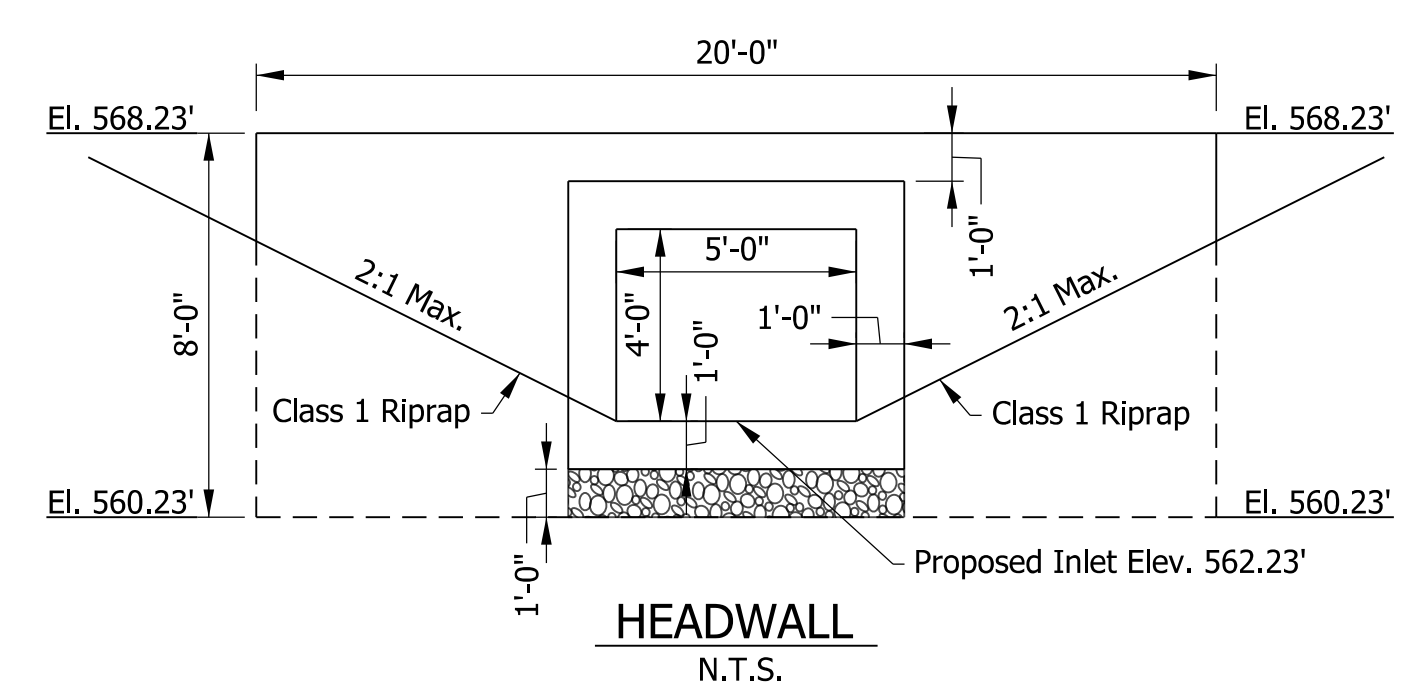


SECTION B-B
N.T.S.

- LEGEND**
- (D2) 165 #/Syd. QC/QA-HMA 3, 58H, surface, 9.5 mm, on 275 #/Syd. QC/QA-HMA, 3, 58H, Intermediate, 19.0 mm, on 880 #/Syd. QC/QA-HMA, 3, 58S, Base, 25.0 mm (placed in two lifts), on Subgrade Treatment, Type 1C with Underlain Biaxial Geogrid
 - (R1) Mill and Overlay, 1.5" Composed of: 165 #/Syd. QC/QA-HMA 3, 58H, Surface, 9.5 mm
 - (S) Sawcut (No Direct Pay)



SECTION A-A
Horizontal Scale: 1" = 20'
Vertical Scale: 1" = 10'



HEADWALL
N.T.S.

HYDRAULIC DATA

Drainage Area	33	ACRES
Q100 Discharge	81	CFS
Q100 Headwater	563.70	LFT
Backwater	2.23	LFT
Skew	11.28	DEGREE
Sump Depth	0	INCHES

EXISTING STRUCTURE

4 ft x 4 ft Reinforced Concrete Box, approximately 54 ft in length, to be replaced.

PROPOSED STRUCTURE

42 ft of RCB 5 ft Span x 4 ft Height

nendres
 5/16/2024 1:41:03 pm
 model:Sheet1
 file: \\indw001\289\projects\78628\ndet-s_2021_omcall_rfp-2005\030_us52_siftee_des\2000090_2001948\cad\cids\78628-rd-s-ssd01.dgn

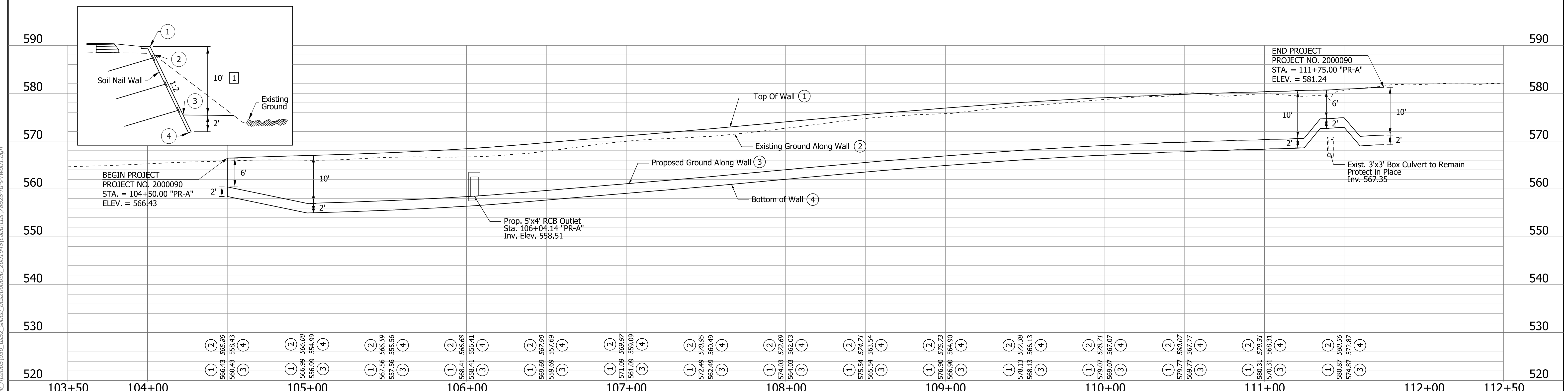
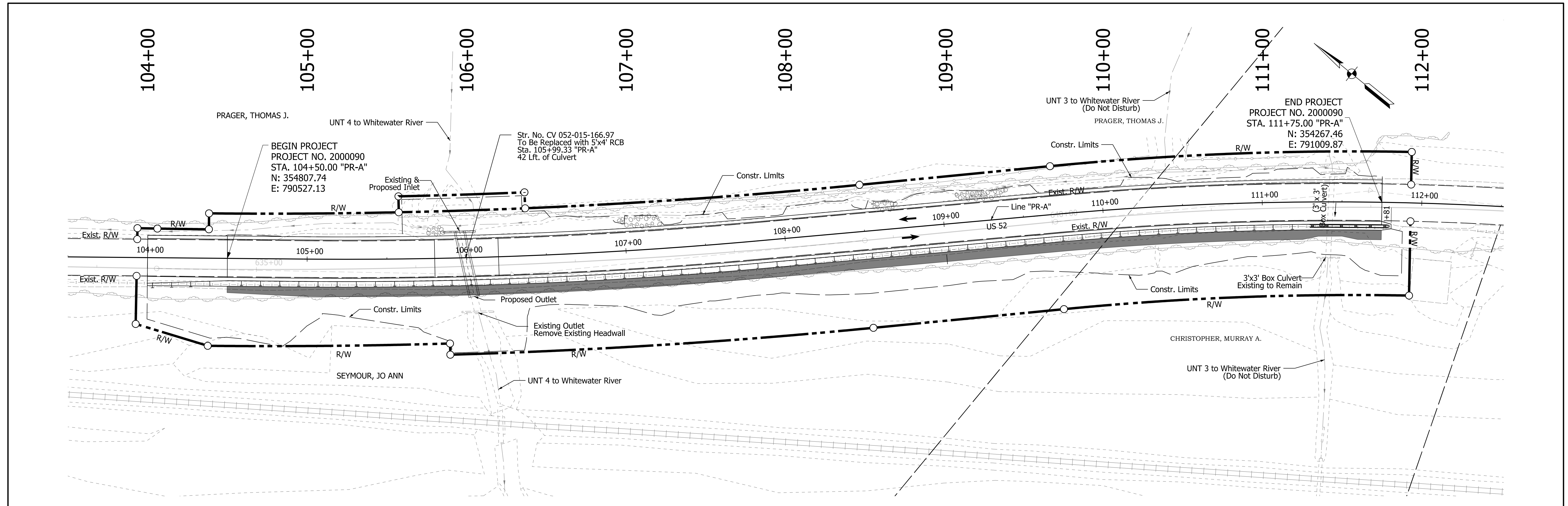
DRAFT
NOT FOR CONSTRUCTION

RECOMMENDED FOR APPROVAL _____	DESIGN ENGINEER _____	DATE _____
DESIGNED: _____ ICH _____	DRAWN: _____ AJM _____	
CHECKED: _____ DLG _____	CHECKED: _____ DLG _____	

INDIANA
DEPARTMENT OF TRANSPORTATION

STRUCTURE DETAIL

HORIZONTAL SCALE	BRIDGE FILE
1"=20'	N/A
VERTICAL SCALE	DESIGNATION
1"=10'	2000090
SURVEY BOOK	SHEETS DET-01
ELECTRONIC	16 of 35
CONTRACT	PROJECT
R-43371	2000090



1 Wall Height Varies:
 Varies 6 ft to 10 ft from Sta. 104+50 "PR-A" to Sta. 105+00 "PR-A"
 Equals 10 ft from Sta. 105+00 "PR-A" to Sta. 111+25 "PR-A"
 Varies from 10 ft to 6 ft from Sta. 111+25 "PR-A" to Sta. 111+35 "PR-A"
 Equals 6 ft from Sta. 111+35 "PR-A" to Sta. 111+50 "PR-A"
 Varies 6 ft to 10 ft from Sta. 111+50 "PR-A" to Sta. 111+60 "PR-A"

DRAFT
 NOT FOR CONSTRUCTION

RECOMMENDED FOR APPROVAL	DESIGN ENGINEER	DATE
DESIGNED: ICH	DRAWN: AJM	
CHECKED: DLG	CHECKED: DLG	

INDIANA
 DEPARTMENT OF TRANSPORTATION

SOIL NAIL WALL DETAILS

HORIZONTAL SCALE	BRIDGE FILE
1"=30'	N/A
VERTICAL SCALE	DESIGNATION
1"=10'	2000090
SURVEY BOOK	SHEETS DET-02
ELECTRONIC	17 of 35
CONTRACT	PROJECT
R-43371	2000090