

Preventing COVID-19 Infection: Community



DO

Wear face covers when entering ALL businesses or public spaces

Physically distance yourself from others - at least 6ft (2 arms length)

Stay home if ill

Keep gatherings under 25 individuals

Wash your hands before and after touching "high touch surfaces" (ex. Counter tops, Door knobs, Shopping carts) or use an alcohol based hand sanitizer



DON'T

Shake hands or hug

Touch your face (eyes, nose, mouth)

Ignore public health orders

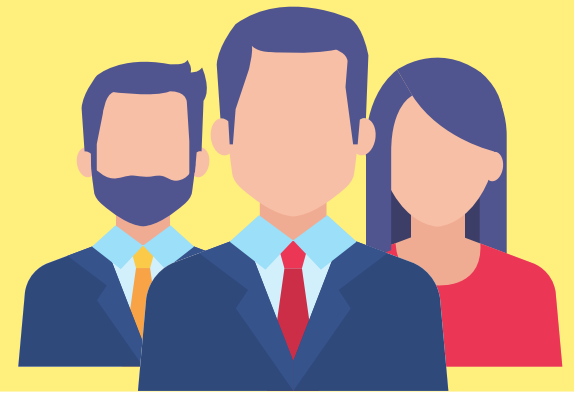
Gather in groups over 25 individuals

Visit at-risk individuals UNLESS necessary

Why wear a mask?

Your mask protects THEM, their mask protects YOU!

Preventing COVID-19 Infection: Businesses



DO

Wear face coverings for ALL employees and customers

Have hand sanitizer at ALL entrances

Physically distance customers & employees

Screen employees daily (temperature and symptoms)

Sanitize high touch surfaces often

Wash hands before and after touching "high touch surfaces" (ex. Counter tops, Door knobs, Shopping carts) or use an alcohol-based hand sanitizer



DON'T

Allow customers into establishment without a face covering (including carry out) unless medically necessary

Operate over 50% capacity

Why wear a mask?

Your mask protects THEM, their mask protects YOU!