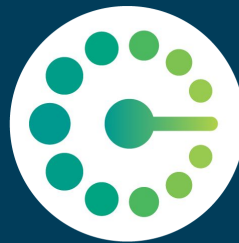




# Dashboard Development In Action

April 26, 2023



COMMUNITY  
FOUNDATION  
OF GREATER FORT WAYNE



TRANSFORM  
— CONSULTING GROUP —

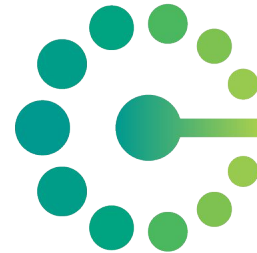
# AGENDA

1. Project Overview
2. Dashboard Development Process
3. Dashboard Walk - Through
4. Dashboard Utilization
5. Q&A

# Meet your Presenters



**Rose Johnson**  
Transform Consulting  
Group



**COMMUNITY  
FOUNDATION**  
OF GREATER FORT WAYNE

**Andrew Downs**  
Community  
Foundation of  
Greater Fort Wayne

# Project Background

- Community Foundation of Greater Fort Wayne celebrated 100 years in 2022.
  - Launch of our “Let’s Rise” Vision Plan
  - New community grantmaking programs
  - “Because We Love Our Community Grants”
  - Op-eds in the newspaper and video series
  - Launch of the Community Dashboard



# Let's Rise.



COMMUNITY  
FOUNDATION  
OF GREATER FORT WAYNE

OUR  
VISION

The positive momentum in our community is undeniable. We've made great strides and are inspired to do more.

As we look to the future, we find new and unique challenges to take on, and systemic issues to overcome. And we will meet those challenges, united, with resolve.

Advancing as a stronger, healthier, more equitable community means collaborating with open arms, planning with purpose, and working with resilience.

We truly thrive when all of our neighbors experience greater well-being and quality of life.

Together, we will invest, educate, partner, and champion this vision. **Let's Rise.**

## Well-Being: How Are We All Doing?



### Connected Community

We affect change in our community by being an advocate for the underserved, instilling pride, and building relationships to create a sense of belonging.

*Strategic Focus:*

- Nonprofit Excellence
- Equitable Community



### Inspiring Places

We provide resources and support to create a community filled with spaces that engage, connect, and energize residents and visitors.

*Strategic Focus:*

- Thriving Neighborhoods
- Vibrant Downtown Development
- Connectivity for All



### Everyone's Economy

We help create an economy where every citizen has the opportunity for upward mobility and increased security, and is motivated to achieve their goals.

*Strategic Focus:*

- Healthy Entrepreneurialism
- Opportunity to Grow



### Lifelong Learning

We work to build a culture of lifelong learning that helps people flourish, strengthening our workforce and increasing resiliency.

*Strategic Focus:*

- Access to Education and Learning Opportunities
- Workforce and Education Connectivity
- Developing a Skilled Workforce



### Healthy Mind and Body

We help each person in our community feel mentally and physically healthy, with access to tools and resources to reach their highest potential.

*Strategic Focus:*

- Access to Care
- Healthy Behaviors



# Community Dashboard Origins

- Let's Rise Vision Plan and the five pillars set the path, but we need to know where we are on the path
  - It is important there are indicators
  - Identification of the indicators cannot be onerous
  - Which indicators are used might change
  - If the indicators are going to drive investment, then they should be available to everyone
- The Community Dashboard is a way to do this.

# Dashboard Development Process



Determine the  
Purpose and  
Audience



Define  
the Research  
Questions



Gather the  
Data



Use the  
Data



Dashboard  
Development  
Process Step 1:

**Determine the  
Purpose and  
Audience**

1. Define the purpose and goals
2. Understand the audience(s) and their use of the dashboard
3. Decide on the Decision-Making Structure





# Dashboard Development Process Step 1: Define the Purpose and Audiences

## Let's Rise Vision Plan



### CONNECTED COMMUNITY

We affect change in our community by being an advocate for the underserved, instilling pride, and building relationships to create a sense of belonging.



### INSPIRING PLACES

We provide resources and support to create a community filled with spaces that engage, connect, and energize residents and visitors.



### EVERYONE'S ECONOMY

We help create an economy where every citizen has the opportunity for upward mobility and increased security, and is motivated to achieve their goals.



### LIFELONG LEARNING

We work to build a culture of lifelong learning that helps people flourish, strengthening our workforce, and increasing resiliency.



### HEALTHY MIND AND BODY

We help each person in our community feel mentally and physically healthy, with access to tools and resources to reach their highest potential.



## Dashboard Development Process Step 2:

# Define the Research Questions

1. What questions need to be answered?
2. What is the story you want to tell?
3. What metrics need to be used and analyzed?
4. What do you (or your audience) need and want to know?



# Dashboard Development Process Step 2: Define the Research Questions

Community Foundation of Greater Fort Wayne Dashboard Metrics												
Pillar Category	Data Point	Key Question Metric Answers	Recommended Priority Level	Geographic Level of Detail	Level of Detail	Systems Involved/ Public Source	Frequency of Data Availability	Visualization Recommendation	Other Notes	Community Survey Design Source	Community Survey Design Research Notes	Benchmark Source
	<i>Focus on areas of quality, access, awareness, advocacy, engagement, inequities, etc.)</i>	<i>What key question is this metric getting at?</i>	<i>Based on the focus and scope of influence, what are the highest priority metrics for this dashboard? 1 being highest priority for inclusion in the dashboard</i>	<i>National, State, County, Zip Code, District, etc.</i>	<i>Other than geographic detail, describe what other details should be included in the data</i>	<i>Note the data source and how we can gather the data</i>	<i>Note how often the data is updated</i>					
Connected Community	Voter participation	How civically engaged are our residents?	3	County	By Election, in person	Indiana Gov Voter Registration and turnout stats: <a href="https://www.in.gov/elections/">https://www.in.gov/elections/</a>	2022 (updated each year)	Offer by election with				
Connected Community	Volunteering	How civically engaged are our residents?	3	Household		US Census Bureau Current Populations Survey Sept. 2019	Included in CPS every 5 years	Show in a map by zip code				
Connected Community	Public Safety	How safe is our community?	1	County		Resident Community Survey See crime data: Indiana Management Performance Hub Equity Portal Public Safety	2022	See crime rates below		<a href="http://www.mapl.com.au/pdf/scquest.pdf">http://www.mapl.com.au/pdf/scquest.pdf</a> , <a href="https://www.summerfoundation.org.au/wp-content/uploads/2019/07/Summer-Foundation-2019-Community-Survey-Report.pdf">https://www.summerfoundation.org.au/wp-content/uploads/2019/07/Summer-Foundation-2019-Community-Survey-Report.pdf</a>		
Connected Community	Frequency of Social Contact	How socially connected our residents?	1	County, Zip Code, Neighborhood		Resident community survey	2022	Utilize likert scales, bar chart		<a href="https://www.summerfoundation.org.au/wp-content/uploads/2019/07/Summer-Foundation-2019-Community-Survey-Report.pdf">https://www.summerfoundation.org.au/wp-content/uploads/2019/07/Summer-Foundation-2019-Community-Survey-Report.pdf</a>		
Connected Community	Personal per capita income	How financially secure are our residents?	1-2	Zip code	Gender, Race	<a href="https://data.census.gov/cedsci/table?q=personal%20income&amp;tid=201&amp;allgeo=true">https://data.census.gov/cedsci/table?q=personal%20income&amp;tid=201&amp;allgeo=true</a>	2020 latest data available	Show in map by zip code				
Connected Community	Increase in connectivity to neighbors	How socially connected are our residents?	2	County, Zip Code, Neighborhood		Resident community survey	2022	Utilize likert scales, bar chart		<a href="https://www.summerfoundation.org.au/wp-content/uploads/2019/07/Summer-Foundation-2019-Community-Survey-Report.pdf">https://www.summerfoundation.org.au/wp-content/uploads/2019/07/Summer-Foundation-2019-Community-Survey-Report.pdf</a>		
Connected Community	Equity Score	How equitable is our community?	1-2	County	Includes overall	National Equity Index: <a href="https://nationalequityatlas.org/research/">https://nationalequityatlas.org/research/</a>	2019, updated annually	map compared with national				
Connected Community	Social Capital	How socially connected are our residents?	2	County	Includes a multi-level	Social Capital Index available via the US Congress Joint Center for Public Spaces	Indicators collected 2019-2021	map compared with national				
Connected Community	Population Mix	Who lives in our community?	2	Household	Includes informal	Overall population Mix US Census Bureau: <a href="https://www.census.gov/data/tables/2019/decennial/c2019-01.html">https://www.census.gov/data/tables/2019/decennial/c2019-01.html</a>	2021, population estimates	Drop down with aspects				
Connected Community	Net Migration	How are people coming and going from our community?	3	County	By Age, Race, Sex	American Community Survey Geographic Mobility Table: <a href="https://data.census.gov/cedsci/table?q=net%20migration&amp;tid=201&amp;allgeo=true">https://data.census.gov/cedsci/table?q=net%20migration&amp;tid=201&amp;allgeo=true</a>	2021, estimates updated annually	Create tool similar to	Due to small numbers			
Connected Community	Belief and faith in higher power	Who lives in our community?	3	ASARB County, Pew State only		Associations of Statisticians of American Religious Bodies	ASARB 2010 Report					
Inspiring places	Sense of community and neighborhood	What do the people who live here think of our community?	2	County, Zip Code, Neighborhood		Resident community survey		Utilize likert scales, bar chart		<a href="https://senseofcommunity.org/">https://senseofcommunity.org/</a>	Need permission to administer	
Inspiring places	Public & active transit use	How are residents using public transit resources?	1	county		American Community Survey Means of Transportation Table	American Community Survey	Bar chart with mode		<a href="https://www.researchgate.net/publication/275111111">https://www.researchgate.net/publication/275111111</a>		
Inspiring places	Green & open space access	Do we have "enough" green and open space?	1	Household		Resident Survey to compare with local data Use GIS data: <a href="https://indnr.maps.arcgis.com/home/item.html?id=88474819169748509800000000000000">https://indnr.maps.arcgis.com/home/item.html?id=88474819169748509800000000000000</a>	Local updated Fall 2021	Map of green spaces	Recommend	<a href="https://www.gree.org/">https://www.gree.org/</a>	Define community	<a href="https://www.gree.org/">https://www.gree.org/</a>
Inspiring places	Shared community space access	Do we have "enough" shared community space?	1	Household		Recommend combining with above local GIS data	Local updated Fall 2021	Map of green/public spaces				
Inspiring places	Satisfaction with transit	What do residents think of our public transit?	1	County, Zip Code, Neighborhood		Citilink in Ft. Wayne ridership <a href="https://www.citilink.com/">surveys</a> (would need to request)	2022	Utilize likert scales, bar chart		<a href="https://www.sciencedirect.com/science/article/pii/S0969697921000000">https://www.sciencedirect.com/science/article/pii/S0969697921000000</a>		
Inspiring places	Perception of place and community as a whole	What do the people who live here think of our community?	2	County, Zip Code, Neighborhood		Resident community survey	2022	Utilize likert scales, bar chart				
Inspiring places	Decreased crime rates	How safe is our community?	3	MPH by County, FBI by State	Aggregated by region	Indiana Management Performance Hub Equity Portal Public Safety	MPH 2020 updated annually	If using city, bar chart in MPH				
Inspiring places	Feeling safe in your community	How safe is our community?	3	County, Zip Code, Neighborhood		Resident community survey	2022	Utilize likert scales, bar chart				
Inspiring places	Arts & Culture (feelings of/ offerings)	What do the people who live here think of our community?	3	County, Zip Code, Neighborhood		Resident community survey				<a href="https://www.arts.org/">https://www.arts.org/</a>	Good list of arts participation	
Inspiring places	Retention rate of neighborhoods (a measure of stability)	How are people coming and going from our community?	3	County		American Community Survey Year Household moved into	2019 ACS 1-year supplement	Can compare with national	If neighborhood			
Inspiring places	Tourism statistics - vacancy rates, overall	Who is visiting our community & what is their purpose?	3	County		General stats like # of visitors, state origin, and spending	2022, annual	Bar chart with drop down	Need to			
Everyone's Economy	Median Household Income	How financially secure are our residents?	1	Zip code, block		<a href="https://data.census.gov/cedsci/table?q=personal%20income&amp;tid=201&amp;allgeo=true">https://data.census.gov/cedsci/table?q=personal%20income&amp;tid=201&amp;allgeo=true</a>	2020, updated with ACS	Map showing by zip code				
Everyone's Economy	Employment Rates	How financially secure are our residents?	2	Zip code, block		<a href="https://data.census.gov/cedsci/table?q=personal%20income&amp;tid=201&amp;allgeo=true">https://data.census.gov/cedsci/table?q=personal%20income&amp;tid=201&amp;allgeo=true</a>	2020, updated with ACS	Map showing by zip code				
Everyone's Economy	Housing Affordability	Can our residents afford to live here comfortably?	1	County	Includes cost burden	Indiana State Housing Dashboard: <a href="https://indianahousing.org/">https://indianahousing.org/</a>	2020 Census, some data	drop down allowing a				
Everyone's Economy	Eviction Rates	How financially secure are our residents?	1	County								
Everyone's Economy	Business Diversity	What businesses are present in our community?	3	County		Available by Employment & Earnings @ STATS Indiana: <a href="https://www.in.gov/economic-development/">https://www.in.gov/economic-development/</a>	2020 latest data available	drop down showing b				
Everyone's Economy	Sense of Economic Security	How financially secure are our residents?	2	Household		Resident community survey	2022	Utilize likert scales, bar chart		Economic Security Index using public data: <a href="https://www.economicsecurityindex.org/">https://www.economicsecurityindex.org/</a>		



# Dashboard Development Process Step 2: Define the Research Questions

Everyone's Economy	Median Household Income	How financially secure are our residents?	1	Zip code, block		<a href="https://data.census.gov/cedsci/table?q=personal%20incor">https://data.census.gov/cedsci/table?q=personal%20incor</a>	2020, updated with A	Map showing by zip c			
Everyone's Economy	Employment Rates	How financially secure are our residents?	2	Zip code, block		<a href="https://data.census.gov/cedsci/table?q=personal%20incor">https://data.census.gov/cedsci/table?q=personal%20incor</a>	2020, updated with A	Map showing by zip c			
Everyone's Economy	Housing Affordability	Can our residents afford to live here comfo	1	County	Includes cost bur	Indiana State Housing Dashboard: <a href="https://indianahousingg">https://indianahousingg</a>	2020 Census, some	drop down allowing a			
Everyone's Economy	Eviction Rates		1								
Everyone's Economy	Business Diversity	What businesses are present in our comm	3	County		Available by Employment & Earnings @ STATS Indiana: h	2020 latest data avai	drop down showing b			
Everyone's Economy	Sense of Economic Security	How financially secure are our residents?	2	Household		Resident community survey	2022	Utilize likert scales, b		Economic Security Index us	
Everyone's Economy	Satisfaction with mix of businesses	What businesses are present in our comm	3	Household		Resident community survey	2022	Utilize likert scales, b			
Everyone's Economy	Automation Index	To what extent are our local businesses au	3	State		US Census Bureau Annual Business Survey Data 2018 T	2018 report based or		Seems t		
Everyone's Economy	Mixed use of transportation	How are residents using public & private tr	3	County		American Community Survey Means of Transportation Tal	American Communit	combine with public &	Note, sa		
		What is the true cost of living for households?			Household type, Equity						
Everyone's Economy	ALICE Data	How financially secure or insecure are our	1-2	County		The ALICE Project (Indiana United Ways): <a href="https://www.un">https://www.un</a>	2018 (ALICE report ba	line graph showing 2			
Everyone's Economy	Childcare vouchers	How financially secure or insecure are our	2	County		CCDF Vouchers from FSSA OECOSL (some data accessible on Kids Count Data Center)					
Everyone's Economy	Median FICO Scores	How financially secure or insecure are our	3	State		By State: <a href="https://www.cnbc.com/select/average-credit-score-by-state/">https://www.cnbc.com/select/average-credit-score-by-state/</a>			Unable t		
Everyone's Economy	Neighborhood unemployment rates	How financially secure or insecure are our	2	ZIP/Block		<a href="https://data.census.gov/cedsci/table?q=unemployment&amp;g">https://data.census.gov/cedsci/table?q=unemployment&amp;g</a>	2020, part of annual	Map showing by zip c			
Lifelong Learning	High school dropout rate	How successful are our residents in their e	1	County; School district; Town		High School Graduation Rates from Indiana Dept. of Ed: h	2021 - updated annu	pair with school-level			
Lifelong Learning	Non-completion rate for Bachelor Deg	How successful are our residents in their e	1	County		Completion rate for college students in Allen County (India	2022 dashboard repc	bar chart, compare w			
Lifelong Learning	Learning participation activity rates	Are our residents participating in learning a	2	Household		Resident community survey	2022	Recommend structur		Options for learning activitie	
Lifelong Learning	Sense of accomplishment and opport	Do our residents feel they have adequate	1	County, Zip Code, Neighborhood		Resident community survey	2022	Utilize likert scales, b			
Lifelong Learning	Literacy rates and reading at grade le	How successful are our residents in their e	1-2	School		Use School-level District Data to see achievement by Dist	2018-2019 school ye	Map out by school wi	GIS pos		
Lifelong Learning	Attendance/participation in early child	Are our residents starting out with a strong	1	County		US Census Bureau: <a href="https://data.census.gov/cedsci/table?">https://data.census.gov/cedsci/table?</a>	2020 (ACS 5-year es	bar chart, compare w			
Lifelong Learning	High school to college retention	What are our residents doing after college	1	County		Decree attainment rate for Allen County: <a href="https://www.lumi">https://www.lumi</a>	2019, updated annua	bar chart, compare w	Use Cer		
Lifelong Learning	College to community retention	Are our most educated residents staying in	1	Individual		Foundation survey for scholarships Recommend using geographic mobility data for college-age residents: <a href="https://data.census.gov/cedsci/table?q=geographic%20mobility&amp;g=0">https://data.census.gov/cedsci/table?q=geographic%20mobility&amp;g=0</a>					
Healthy Mind & Body	ACES	What Adverse Childhood Experiences mig	2	State	By age group, se	<a href="https://www.childhealthdata.org/browse/survey/results?q=">https://www.childhealthdata.org/browse/survey/results?q=</a>	2019-2020 National s	Recommend a drop-d	Unable t		
Healthy Mind & Body	Social contributors of health	How healthy are our residents? What is co	1	Household, aggregated by county		Indiana Data Hub (Info from FSSA) Hoosier Health & Well	Data last updated 20	Recommend using th	MPH Lin		
Healthy Mind & Body	Infant and maternal mortality	How is infant and maternal health in our cc	1	County		Infant and Maternal Mortality in the Indiana Management f	Last updated Feb 20	use a trend line, com			
Healthy Mind & Body	Chronic disease rates	How healthy are our residents?	1	City (CDC), County ISDH		Chronic Illnesses in Ft. Wayne: <a href="https://chronicdata.cdc.gov">https://chronicdata.cdc.gov</a>	CDC Data 2020 (som	Recommend a drop c			
Healthy Mind & Body	Emergency response calls	How often are residents in crisis, needing e	3	Ft Wayne & Allen County available		Emergency Calls in Allen County: <a href="https://docs.google.com">https://docs.google.com</a>	2012, perhaps collec	if able to obtain, line			
Healthy Mind & Body	Health promoting activity participation	How healthy are our residents?	2	County, Zip Code, Neighborhood		Resident community survey	2022	Recommend structur		<a href="https://www.who.int/news-ro">https://www.who.int/news-ro</a>	
Healthy Mind & Body	Physical activity and healthy eating ha	How healthy are our residents?	1	County		County Health Rankings County Health Factors Report: h	2022 report based or	Use box plots to sho	Includes	<a href="https://www.fns.usda.gov/he">https://www.fns.usda.gov/he</a>	
Healthy Mind & Body	Work-life balance	How healthy are our residents?	3	County, Zip Code, Neighborhood		Resident community survey	2022	Utilize likert scales, b			
Healthy Mind & Body	Suicide rates	How are mental health challenges impactir	2	County		Indiana State DOH Stats Explorer (Deaths from Intentiona	2020, updated annua	Map with deaths by c			
Healthy Mind & Body	Smoking rates	How healthy are our residents?	3	Zip Code		Tobacco Quitline Calls in the Indiana Data Hub (Data from	2020, updated annua	Pair with chronic dise			
Healthy Mind & Body	Accessibility of healthcare	Do residents in our community have acces	1	County		Geographic availability of healthcare resources available f	2018 for avg. travel t	Use GIS data to map	Referen		
Healthy Mind & Body	Food bank lines/food deserts	How are resources in our county supportin	1	County		Feeding America: food insecurity rates: <a href="https://map.feedin">https://map.feedin</a>	2019, updated annua	Like Feeding America			
Healthy Mind & Body	Vaccination rates	How healthy are our residents?	3	County		Indiana State Dept. of Health County Immunization Rate A	2021 Report availab	Bar chart comparing	Estimate		
Healthy Mind & Body	Deaths of despair	How are mental health challenges impactir	1-2	County	Number of death	See suicide rates above, ISDH Deaths from Liver Disease	2020, updated annua	Map with deaths by c			



Dashboard  
Development  
Process Step 3:

## Gather the Data

1. Public Data
  - a. Federal Data
  - b. State Data
  - c. Local Data
2. Community Feedback
  - a. Community Survey Data



# Dashboard Development Process Step 3: Gather Data



- SurveyUSA interviewed 433 adults from Allen County, Indiana 09/26/2022 through 10/10/2022.
- This research was conducted online among a representative cross-section of adults, selected at random by Lucid Holdings LLC of New Orleans.
- Adult respondents were weighted to US Census targets for gender, age, and race.



Dashboard  
Development  
Process Step 4:  
**Use the Data**

- Software
- Features
- Drill down and disaggregate data
- Narrative context
- Communication and dissemination plan



# Community Dashboard

## WELCOME TO THE LET'S RISE COMMUNITY DASHBOARD!

*(To take in all of the information that the Community Dashboard has to offer, we recommend viewing this page from a desktop browser.)*

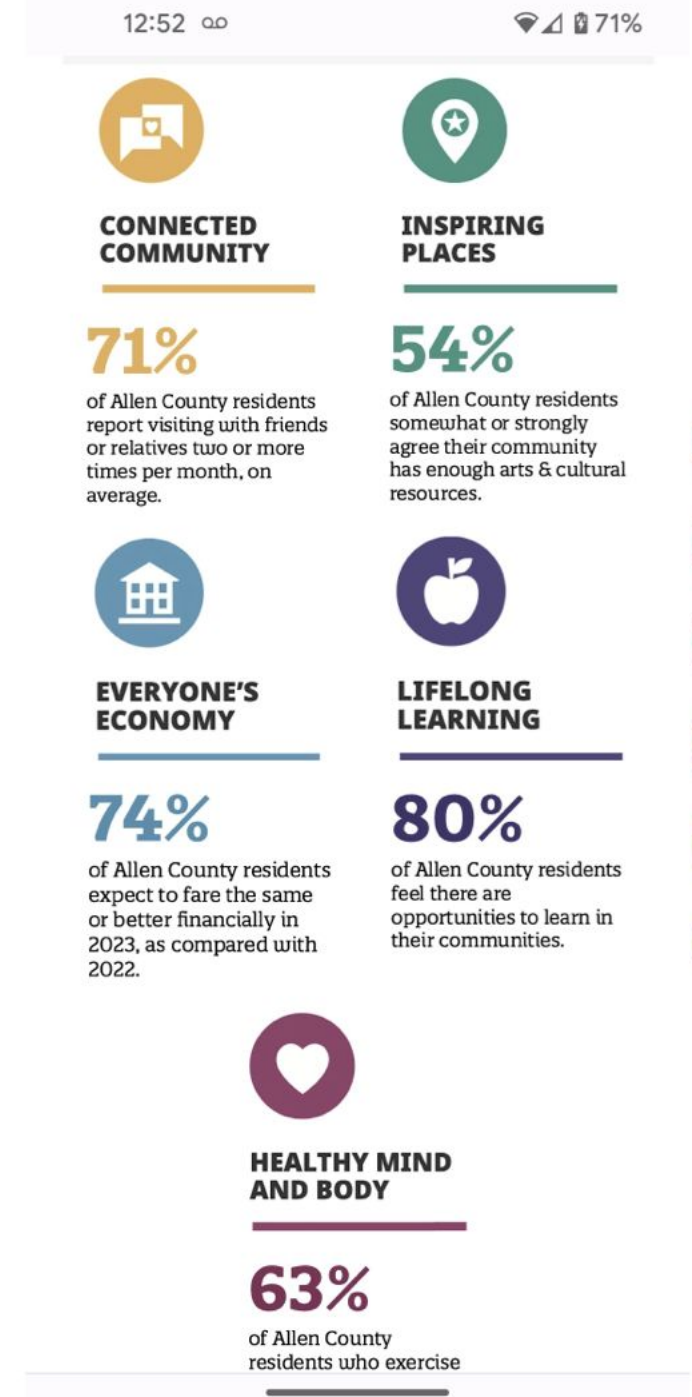
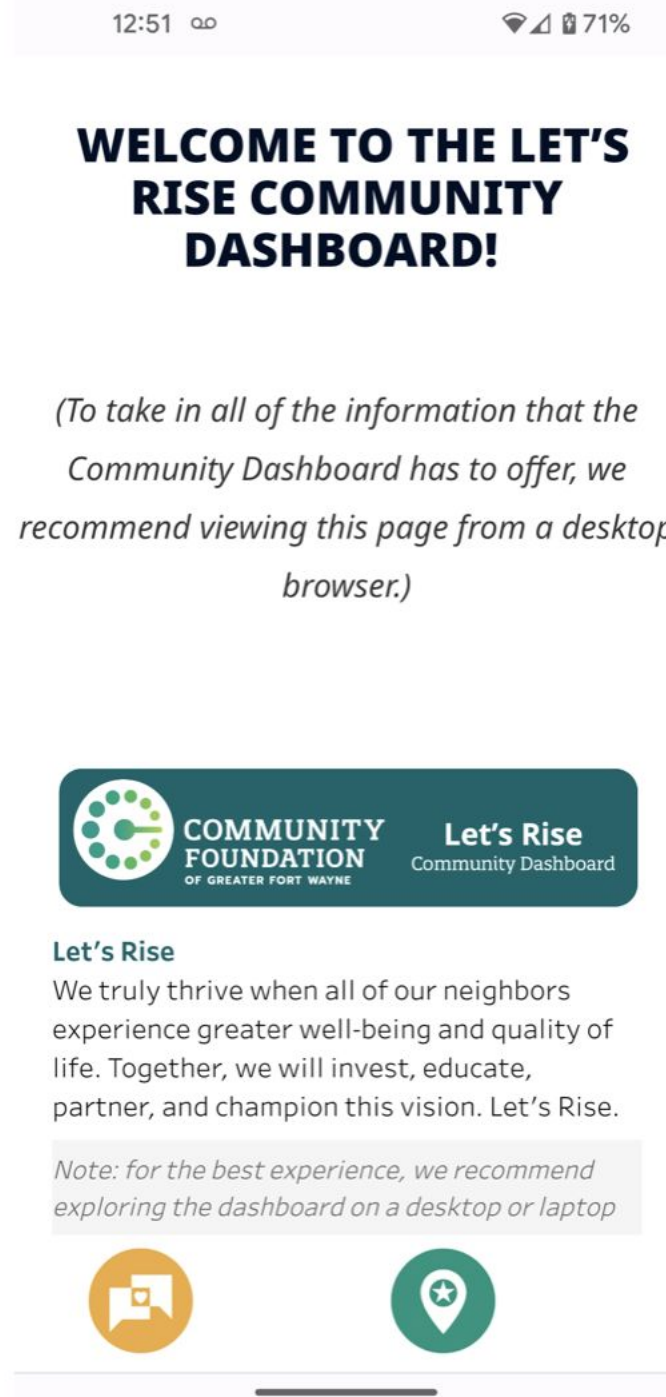
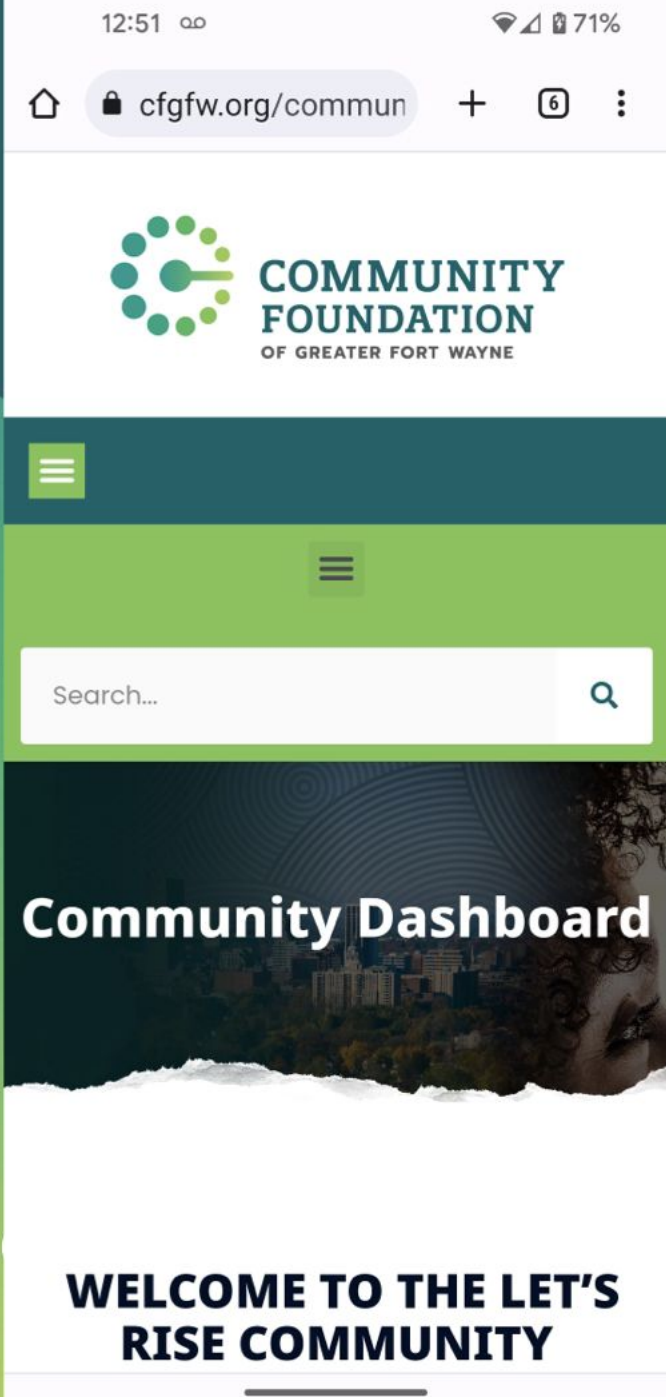


### Let's Rise

We truly thrive when all of our neighbors experience greater well-being and quality of life. Together, we will invest, educate, partner, and champion this vision. Let's Rise.







# WELCOME TO THE LET'S RISE COMMUNITY DASHBOARD!

*(To take in all of the information that the Community Dashboard has to offer, we recommend viewing this page from a desktop browser.)*



**Let's Rise**  
We truly thrive when all of our neighbors experience greater well-being and quality of life. Together, we will invest, educate, partner, and champion this vision. Let's Rise.

*Note: for the best experience, we recommend exploring the dashboard on a desktop or laptop*



  
**CONNECTED COMMUNITY**

**71%**  
of Allen County residents report visiting with friends or relatives two or more times per month, on average.

  
**EVERYONE'S ECONOMY**

**74%**  
of Allen County residents expect to fare the same or better financially in 2023, as compared with 2022.

  
**INSPIRING PLACES**

**54%**  
of Allen County residents somewhat or strongly agree their community has enough arts & cultural resources.

  
**LIFELONG LEARNING**

**80%**  
of Allen County residents feel there are opportunities to learn in their communities.

  
**HEALTHY MIND AND BODY**

**63%**  
of Allen County residents who exercise



# Dashboard Development Process Step 4: **Use the Data**

**The dashboard in action.**

**Community Foundation of  
Greater Fort Wayne**





## Let's Rise Dashboard



### Inspiring Places

We provide resources and support to create a community filled with spaces that engage, connect, and energize residents and visitors.

**54%**  
of residents agree they have enough arts resources nearby

**72%**  
of residents agree their neighborhood has its own identity

**24%**  
Ft. Wayne's urban tree cover

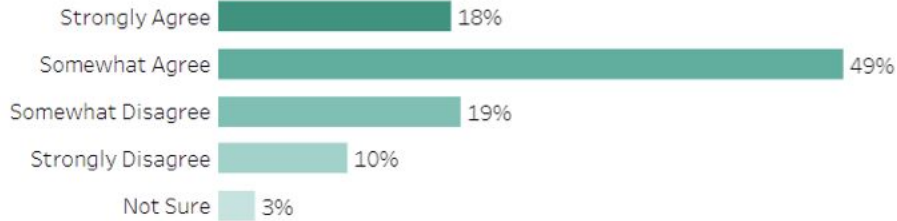


Dashboard Home



### Select Survey Question to Examine

I feel connected to the neighborhood or area where I live.



### Explore Survey Responses by Demographics

Urbanicity



### Participation in Arts and Cultural Activities in the Last Year



Participated  
Did not participate

*"Fort Wayne is the leader...I also like the fact that the rejuvenation of the downtown, the cleaning up of our rivers, and the arts are, in my opinion, top notch especially for a city of this size."*

### Recreational Facilities & Green Spaces

Hover over point on map to see details. To filter the properties in view, select the symbol with three squares on the left side of the map



### Tree Canopy by Census Tract - Fort Wayne Metro Area



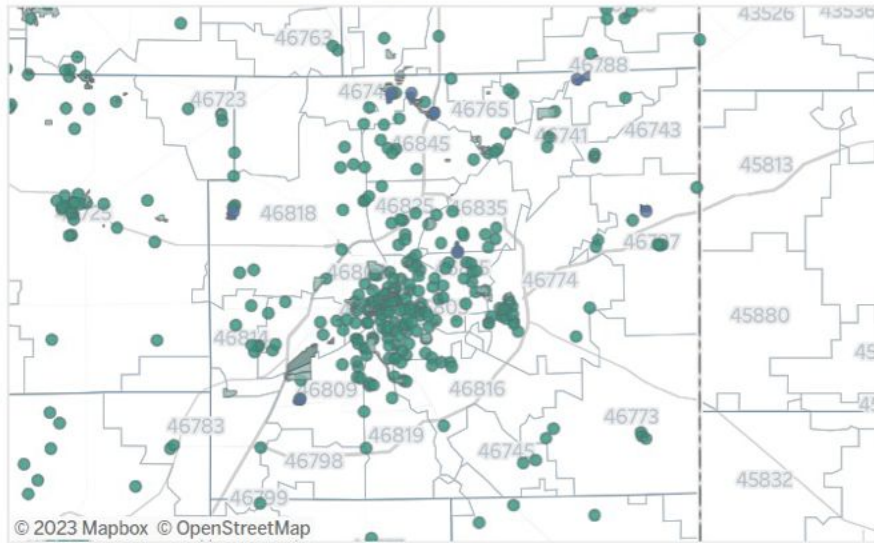


Info & Guide

"Fort Wayne is the leader...I also like the fact that the rejuvenation of the downtown, the cleaning up of our rivers, and the arts are, in my opinion, top notch especially for a city of this size."

### Recreational Facilities & Green Spaces

Hover over point on map to see details. To filter the properties in view, select the symbol with three squares on the left side of the map



### Means of Transportation to Work

Select Geography and Demographic

Allen County | All workers

Car, truck, or van - carpooled 13,302

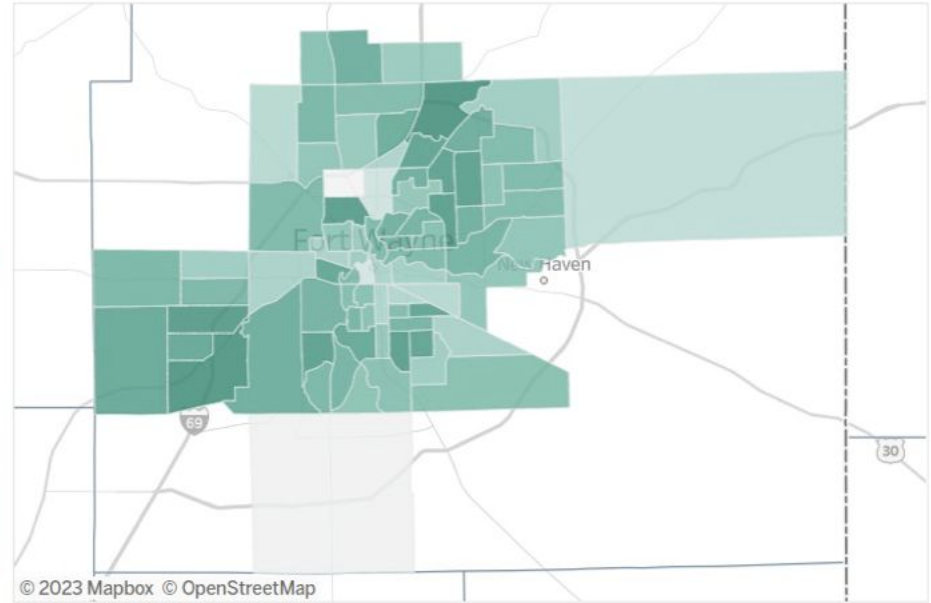


# 183

Public Art Works  
On the  
Ft. Wayne  
Public Art Trail

Explore the  
Fort Wayne  
Public Art Trail

### Tree Canopy by Census Tract - Fort Wayne Metro Area

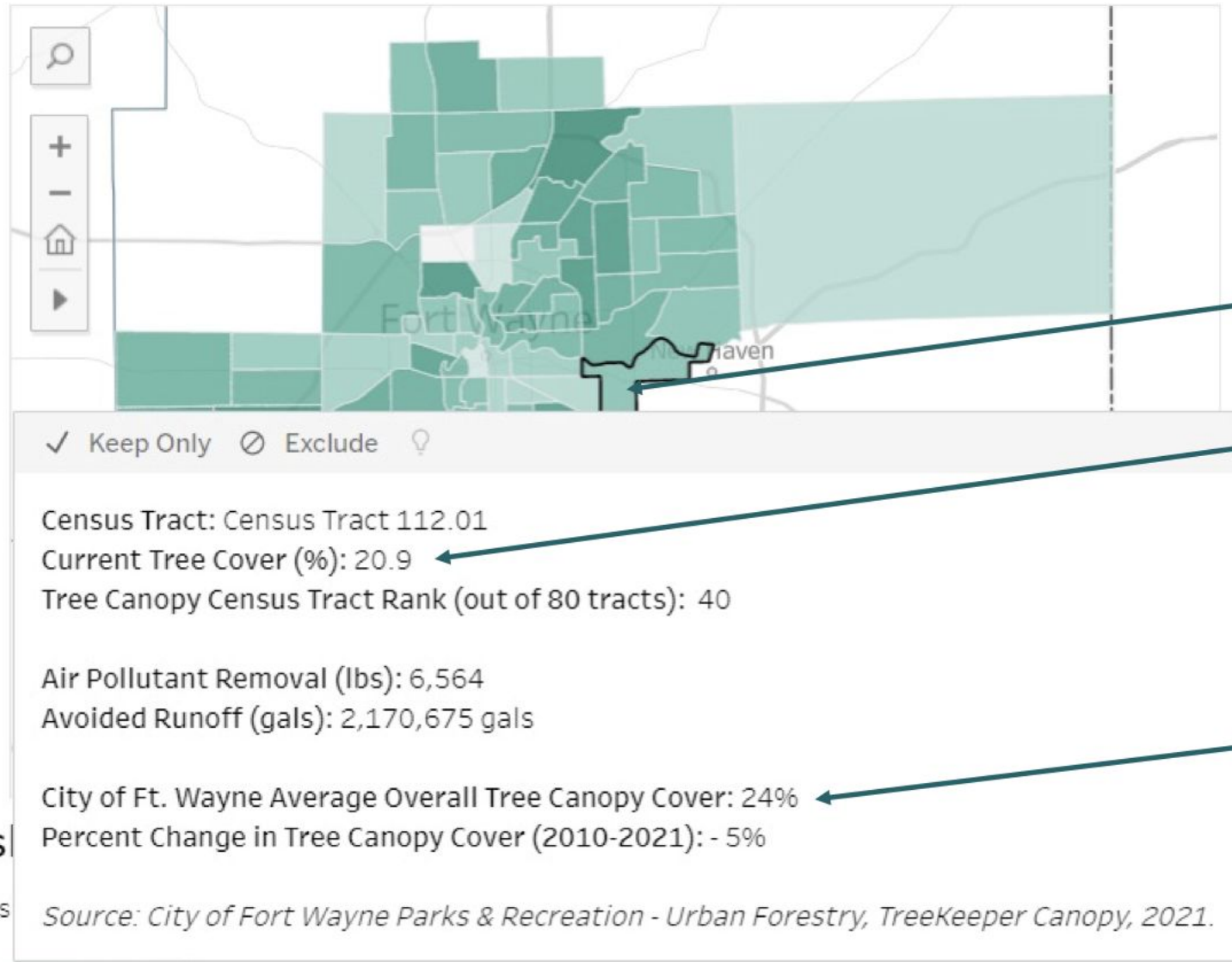


### Total Ridership Over Time - Large Transportation Systems in Indiana

Choose systems to view Ft. Wayne (Citilink)



## Tree Canopy by Census Tract - Fort Wayne Metro Area



S

15



TREE CANOPY GROWTH FUND

est. 2022

# TREE CANOPY GROWTH FUND

Fostering community health  
through urban tree planting and advocacy.



HOME

ABOUT

WHY TREES

CONTRIBUTE

CONTACT

NEWS



Fort Wayne, Indiana



# TREE CANOPY GROWTH FUND

Fostering community health  
through urban tree planting and advocacy.



HOME

ABOUT

WHY TREES

CONTRIBUTE

CONTACT

NEWS

## OUR STORY

Trees are important elements of a healthy urban ecosystem. Unfortunately, the urban canopy in the Fort Wayne/Allen County, Indiana area has been shrinking in recent years.

While the City of Fort Wayne operates an active [street tree program](#), this approach is limited to public property. Private properties, such as homes, churches, and businesses offer many more opportunities to plant new trees that can reach their full maturity. The Tree Canopy Growth Fund was developed to fill that gap, while also educating the community about the many benefits of growing and maintaining our urban forest.

Since 2017, TCGF cofounders Derek Veit and Kody Tinnel have collaborated on various tree planting efforts. Following multiple conversations about the need to get more trees planted on private property, they set out to develop the idea that would become the Tree Canopy Growth Fund.

Inspired by organizations like [Root Nashville](#) and [Keep Indianapolis Beautiful](#), **we aim to collaborate with community stakeholders by offering funding and expertise to grow the community's urban canopy.** As Fort Wayne and Allen County continue to grow and develop, maintaining a vibrant urban forest will be critical in maintaining a high quality of life.

FORT WAYNE & ALLEN COUNTY

# Explore the Dashboard



<https://cfgfw.org/community-dashboard/>



# Questions for Presenters?

## Visit Our Booth, Or Reach Out!

**Rose Johnson**

[rjohnson@transformconsultinggroup.com](mailto:rjohnson@transformconsultinggroup.com)

**Andrew Downs**

[downsa@andrewdownsconsulting.com](mailto:downsa@andrewdownsconsulting.com)

**Alison Gerardot**

[agerardot@cfgfw.org](mailto:agerardot@cfgfw.org)