

NIRPC Economy & Place Committee

October 9, 2024

NIRPC – Who we are and what we do

Northwestern Indiana Regional Planning Commission (NIRPC)

- Created in 1965 by state legislation (IC 36-7-7.6)
- Metropolitan Planning Organization (MPO) & Council of Governments (COG)
- Board composition set by statute:
 - Lake, Porter, La Porte Counties Councils, Commission, Surveyors
 - 41 cities and towns
 - 2 townships
 - Governor's appointee
- Nearly 800,000 people are represented

Three focus areas:

- Economic Development
- Environment
- Transportation Planning

NIRPC – Who we are and what we do

NIRPC provides a forum that enables the citizens of Northwest Indiana to address regional issues relating to transportation, the environment, and community & economic development.

- NIRPC has a six-fold mission:
 - To serve as Northwest Indiana’s metropolitan planning organization and act as the designated recipient for certain transportation funding;
 - To generate meaningful dialogue and cooperation on issues of common concern;
 - To contribute to the development of a common vision pertaining to Northwest Indiana’s future;
 - To provide a forum in which elected officials and other decision-makers can develop and implement solutions to regional problems;
 - To create opportunities for partnership between the public and private sectors; and
 - To provide a common voice for Northwest Indiana in its communications with the state and the federal government.

NIRPC – Who we are and what we do

Economic Development

- In 2019, NIRPC was designated by the U.S. Economic Development Administration (EDA) as the Economic Development District (EDD) for Lake, Porter, and La Porte counties.
- NIRPC maintains and works with partners to implement the Comprehensive Economic Development Strategy (CEDs), a five-year strategy-driven plan for regional economic development.
- 2022 Economic Recovery and Resilience Plan

Environmental Policy

- **Environmental Committee (EMPC)** has provided a forum for local governments, state and federal agencies, environmental groups, industries, and technical experts to discuss new or controversial environmental issues, permits, projects, programs and policies in a professional and productive manner.
- **Communitree**- Since 2017 NIRPC has received 4 consecutive Great Lakes US Forest Service Grants totaling \$400,000.
- **Brownfields**- Since 2012 NIRPC has coordinated brownfield coalition applications with the RDA, Gary, Hammond, East Chicago, and the NWI Forum. The Coalition was awarded \$2 M in Brownfield funding in 3 grants between 2013 and 2019.
- **Air Quality Public Education/Green Fleets**- The Commission has consistently awarded \$360,000 per year of the region's FHWA Congestion and Mitigation Air Quality funds to NIRPC. For many years NIRPC has sub-awarded these funds to Drive Clean Indiana. This program has assisted NWI municipalities, school districts, and companies to receive millions of dollars for clean fueled vehicles and infrastructure.

NIRPC – Who we are and what we do

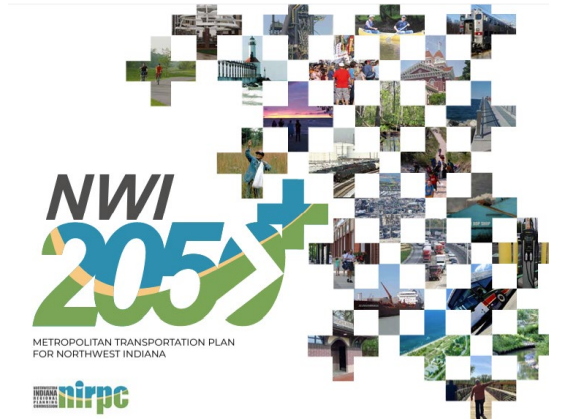
Transportation

- NIRPC is the designated Metropolitan Planning Organization (MPO) for the three Urban Areas in Northwest Indiana: Chicago-IN, Michigan City-La Porte, Valparaiso-Shorewood Forest
- An MPO is a federally-mandated transportation policy-making group made up of representatives from local government and transportation authorities
- An MPO is designated in urban areas with a population greater than 50,000 people
- As MPO, NIRPC is responsible for programming Federal transportation funding within Lake, Porter, and La Porte counties
- Investment decisions are to be made within a continuing, cooperative, and comprehensive process (3-C's)
- Must reflect a regional vision

NIRPC – Who we are and what we do

Transportation

- MPOs produce 3 core documents:
 - **Metropolitan Transportation Plan (MTP):**
 - The current MTP is *NWI 2050+*
 - Required by Federal law to update every four years
 - Must have at least a 20-year horizon and be fiscally constrained
 - Sets regional policy for the development of a multimodal transportation system
 - **Unified Planning Work Program (UPWP):**
 - Approved work plan for MPO staff
 - Program of planning tasks over next fiscal year (State calendar from July to June)
 - Addresses major surface transportation issues facing Northwest Indiana today and into the future by implementing policies and strategies identified in NIRPC's long-range plan
 - Addresses priorities of federal funding agencies
 - **Transportation Improvement Program (TIP)**
 - Short-range plan that programs FHWA and FTA transportation funds for the improvement of NWI's transportation network.



Other Projects



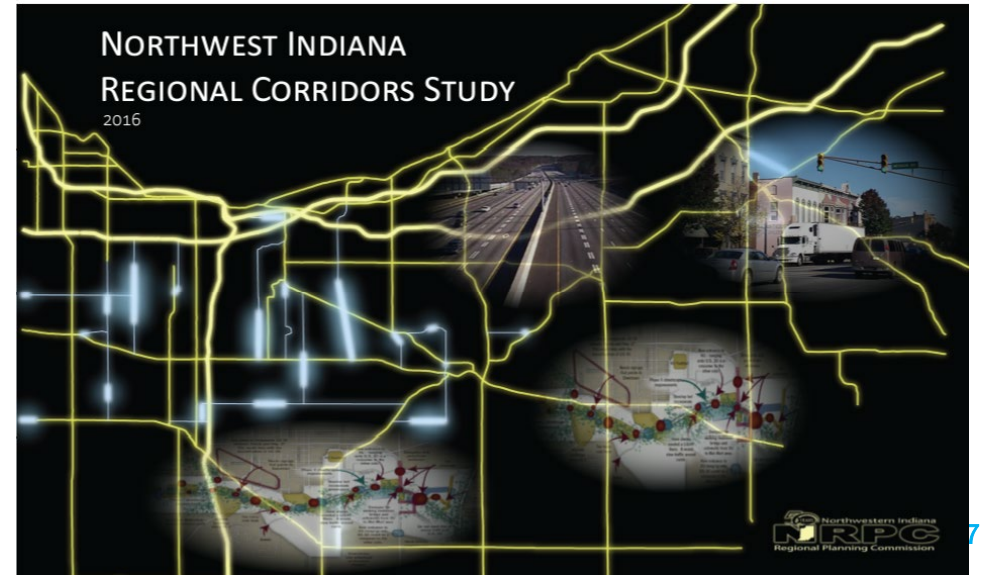
E-COMMERCE IN NORTHWEST INDIANA

Fall 2020

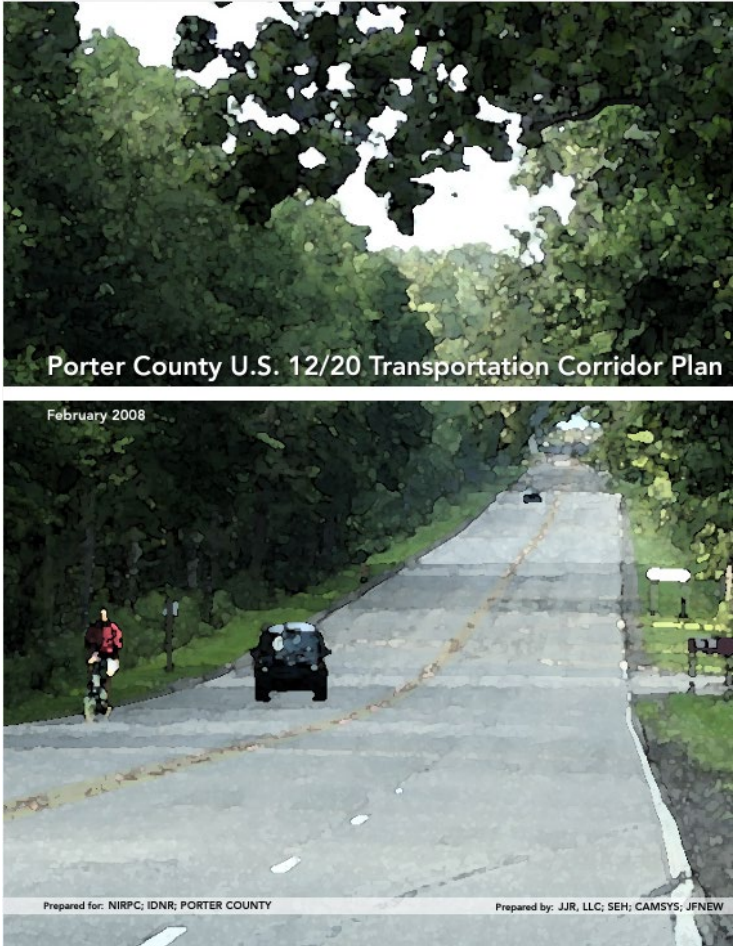
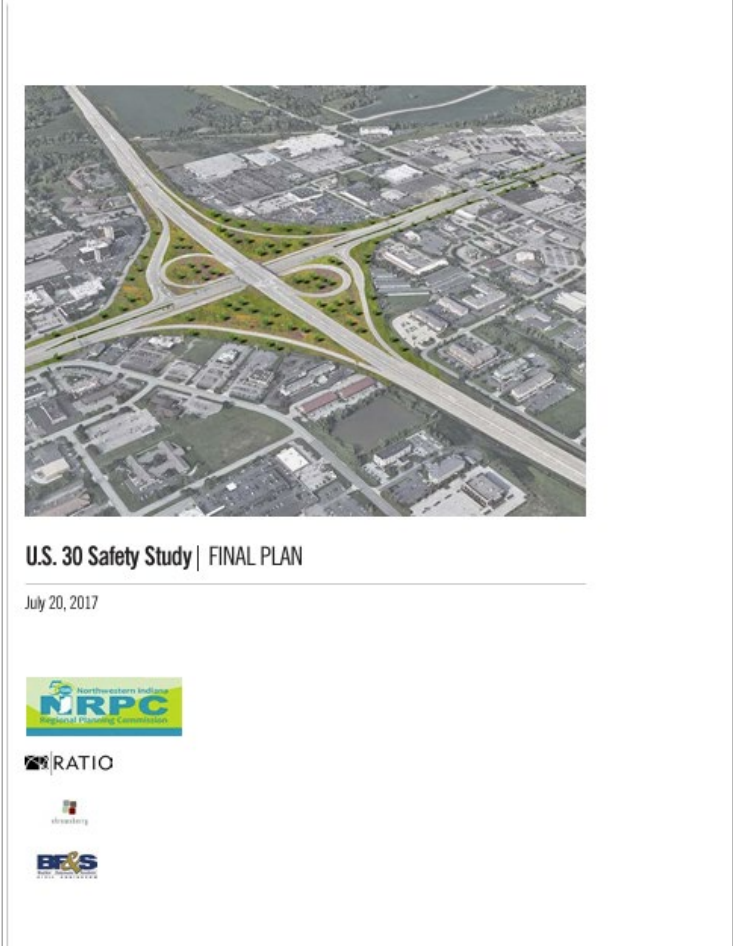
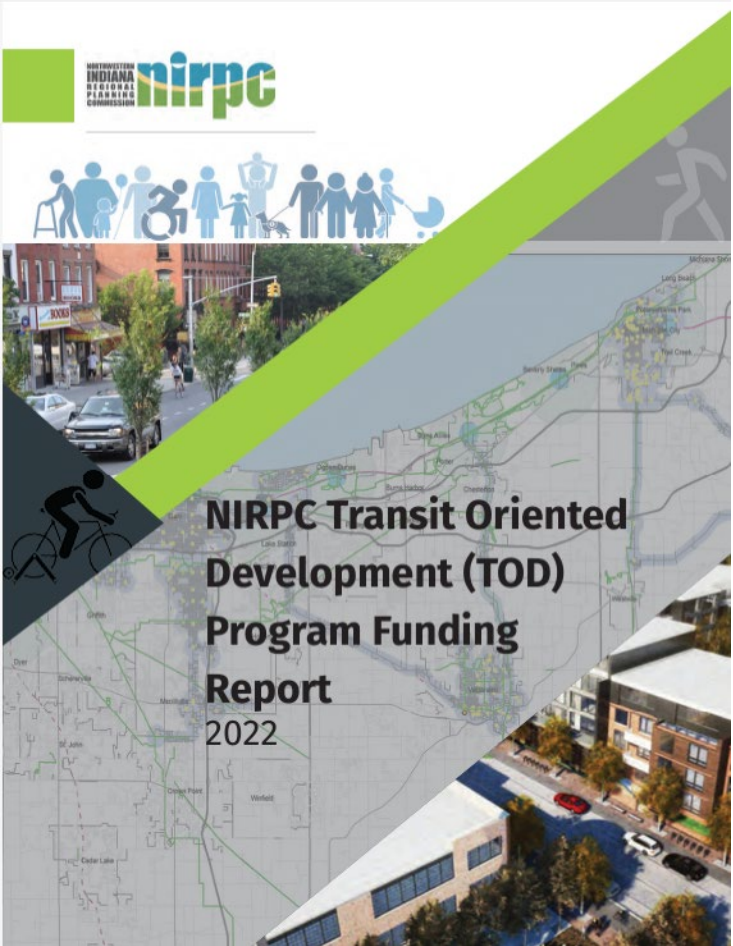


NORTHWEST INDIANA REGIONAL CORRIDORS STUDY

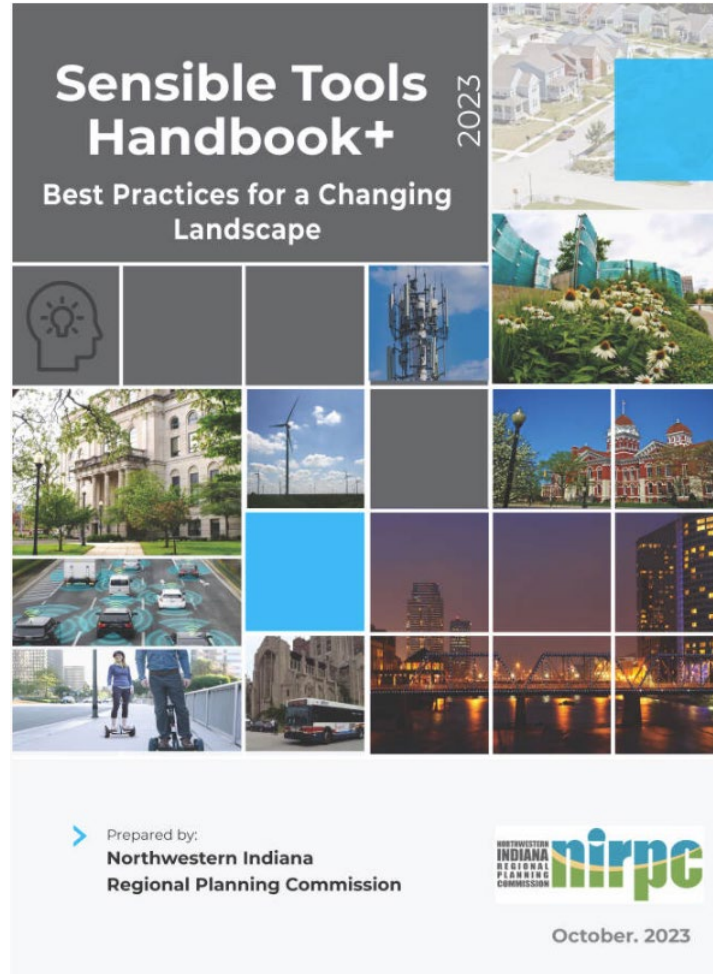
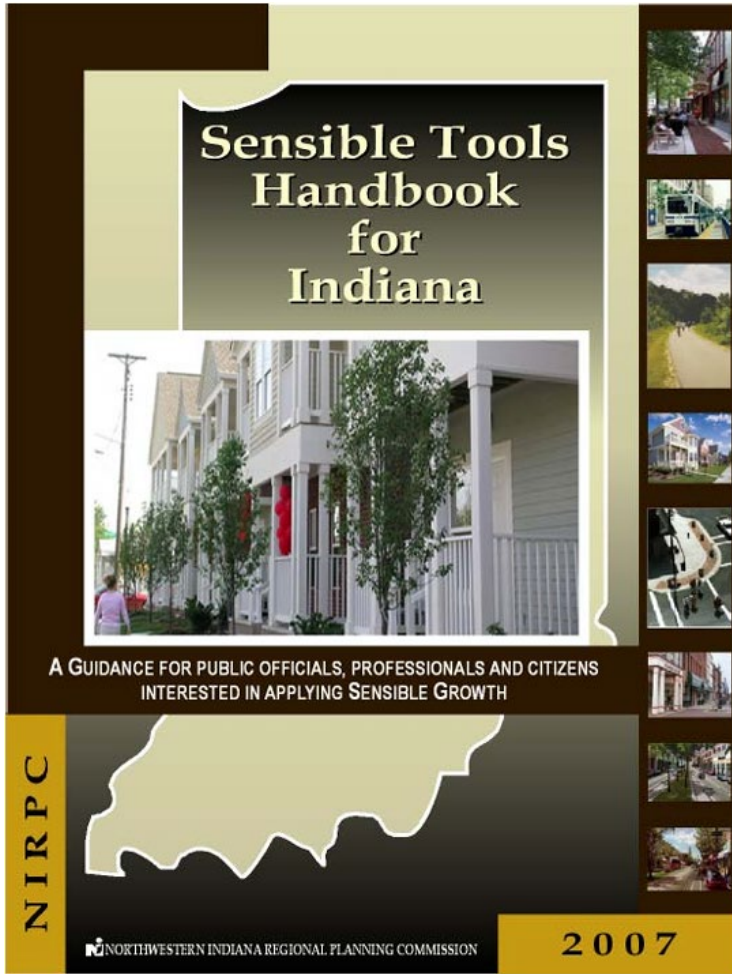
2016



Other Projects



Other Projects



NIRPC – Committee Structure



TRANSPORTATION

- Surface Transportation
- Ped, Pedal, Paddle
- Technical Planning (TPC)



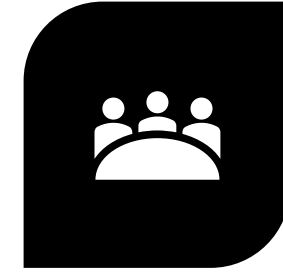
ENVIRONMENT

- Environmental Management & Policy (EMPC)



ECONOMY & PLACE

- Land Use
- Local Government Assistance



LEADERSHIP

- Finance & Personnel
- Legislative
- Outreach

*Adopted by NIRPC Full Commission on April 18, 2024
Implementation in July 2024*

Role of the Economy & Place Committee

Serve as the Comprehensive Economic Development Strategy (CEDS) Committee

- Responsible for the development, implementation, revision or replacement of the CEDS for the Planning Organization (NIRPC Full Commission/Executive Board).
- Review and provide recommendations to Full Commission/Executive Board regarding adoption of and amendments to the CEDS.
- Evaluate, either directly or through a designee, EDA funding applications to ensure consistency with CEDS and provide letters of support.

Serve as a Land Use and Community Planning Topical Committee

- Educate members on topics, policies, programs, and regulations relevant to land use, smart growth, economic development, and transit-oriented development (TOD).
- Advise NIRPC on policies and programs related to land use, smart growth, economic development, and transit-oriented development (TOD).
- Oversee the development of and provide recommendations to the Transportation Committee regarding adoption of and amendments to the Land Use element of the Metropolitan Transportation Plan.
- Oversee the development of plans, programs, and policies related to land use, smart growth, economic development, and transit-oriented development (TOD) as initiated by staff, the committee, or at the direction of the Transportation Committee.
- Provide training to local government officials, economic development officials, developers, and affiliated industry representatives on best practices for sustainable development, smart growth, land use, livable communities, and related topics.
- As designated by the Transportation Committee for specific funding categories, establish selection criteria, select, and recommend transportation projects to the Transportation Resource and Oversight Committees for inclusion in the Transportation Improvement Program.
- Oversee the development and implementation of an annual LPA Planning Assistance program and recommend a program of projects to the Transportation Committee.

Role of the Economy & Place Committee

Membership

- 12 Commissioners (4 per County, including Chair)
 - Commissioner may appoint a qualified staff representative (must have direct influence over planning, redevelopment, or economic development) as a proxy.
- 1 NWI Forum Representative
- 1 Workforce Development Representative
- 1 Higher Education Representative
- 2 Minority Group Representatives, at least one of which represents minority business enterprise
- 1 Labor Group Representative
- 1 Realtors Association Representative
- 1 Private Individual Representative
- 2 Other Representatives who can contribute to and benefit from improved economic development in the region

Quorum

- 3 voting committee members constitute a quorum.
- A simple majority of the quorum is required to act.

Meeting Schedule

- Generally, and initially, meets quarterly on the 2nd Wednesdays of the month.
- More frequent meetings may be necessitated by work products (e.g., new CEDS creation).

Contact Name

Tom Vander Woude

Email

tvanderwoude@nirpc.org

Website

www.nirpc.org

Facebook

facebook.com/nirpcmpo

Instagram

instagram.com/regionmpo

LinkedIn

linkedin.com/company/nirpc

Twitter

twitter.com/NIRPC

YouTube

youtube.com/NIRPCplanning

Phone

(219) 763-6060/Office

Address

6100 Southport Rd Portage, IN 46368