



## HAZARDOUS AND REGULATED MATERIALS INSPECTION REPORT

Parcel ID: 45-08-03-181-003/004

700 E Fifth Avenue and 716-722 E. Fifth Avenue  
Gary, Indiana 46402

### Prepared for:

Northwest Indiana Regional Development Authority  
9800 Connecticut Drive  
Crown Point, Indiana 46307  
Client Reference: Gary Commercial Blight Elimination Program

### Prepared by:

Egis  
48797 Alpha Drive, Suite 130  
Wixom, MI 48393  
Egis Project ID: 240100  
February 11, 2025

## TABLE OF CONTENTS

1.0	Introduction .....	1
1.1	Certification .....	1
2.0	Description of Structure .....	2
2.1	Accessibility Limitations .....	2
3.0	General Inspection Methodology .....	3
4.0	Laboratory Analytical Results .....	4
5.0	Other Hazardous and/or Regulated Materials .....	5
6.0	Conclusions and Recommendations .....	8
7.0	Limitations .....	8

## ATTACHMENTS

Attachment 1 – Laboratory Analytical Report

Attachment 2 – Figures

Attachment 3 – Photographic Log

## 1.0 INTRODUCTION

Egis has been contracted by the Northwest Indiana Regional Development Authority (the RDA) to provide industrial hygiene services for properties in the City of Gary. Egis industrial hygienists have conducted hazardous and regulated materials (HRM) inspections of commercial buildings and associated exterior portions of select properties in the City of Gary. The properties inspected by Egis are included in a portfolio of work provided by the RDA, in concurrence with City of Gary governance, for the Gary Commercial Blight Elimination Program.

To facilitate demolition, Egis has completed an HRM inspection (including asbestos) of, a one-story commercial building with a flat roof located at 700-716 E Fifth Avenue Gary, Indiana (Site). The HRM inspection was conducted on January 30, 2025. During the inspection bulk material samples were collected, and quantities of suspect asbestos-containing materials were estimated, where applicable. This inspection also included identification and quantification of other hazardous and/or regulated materials (ORM) within the building structure and in exterior portions of the Site.

### 1.1 CERTIFICATION

The asbestos inspection was conducted by State of Indiana (SOI) Accredited Asbestos Inspectors identified below.

TABLE 1.1.1 – Asbestos Inspectors	
Inspector Name and SOI Accreditation Number	Contact Information
Thomas Wilkewitz - 19A015949	thomas.wilkewitz@egis-group.com / 248-756-4754
Osvaldo Castellanos - 19A016055	osvaldo.castellanos@egis-group.com / 248-568-8700

## 2.0 DESCRIPTION OF STRUCTURE

The structure is approximately 11,250 square feet in size. It is a steel framed structure situated on a concrete slab. The roof is a flat membrane. The exterior walls are brick. The doors are steel.

Property information and a description of the structure(s) and other improvements are provided below. Information was gathered from the site reconnaissance and review of municipal records.

TABLE 2.0.1 – PROPERTY INFORMATION	
Parcel Numbers	45-08-03-181-003.000-004 (700 E. Fifth Avenue) 45-08-03-181-004.000-004 (716-722 E. Fifth Avenue)
Square Footage	11,250 square feet
Foundation Type	Slab On-Grade
Building Type	Commercial Building
Exterior Description	Steel Framed Commercial Building with Brick Siding and Flat Roof Membrane
Pavement/Hardscape	Asphalt Parking Lot

### 2.1 ACCESSIBILITY LIMITATIONS

As part of conducting the HRM inspection, Egis field staff assessed the condition of the dwelling holistically, beginning with the foundation and structural members, and specifically by exterior area and functional space for safe accessibility. Exterior areas (EA) and functional spaces (FS) may be considered inaccessible as a result of fire damage, water damage, and/or an unstable foundation. In instances where accessibility is limited, Egis field staff make reasonable efforts to sample (by reaching through doorways or windows) and quantify, or assume, any suspect ACM visible from outside the structure that is located in an EA or FS determined to be inaccessible. This structure was completely accessible.

## 3.0 GENERAL INSPECTION METHODOLOGY

This inspection provides information on the presence of Asbestos Containing Materials (ACMs) in accordance with the National Emission Standard for a Hazardous Air Pollutant (NESHAP) for Asbestos, 40 CFR 61 Subpart M. The Clean Air Act (CAA) requires the U.S. Environmental Protection Agency (EPA) to develop and enforce regulations to protect the public from exposure to airborne contaminants that are known to be hazardous to human health. The U.S. EPA established the NESHAP under the authority of Section 112 of the CAA, and asbestos was one of the first hazardous air pollutants regulated.

NESHAP requires the thorough inspection of the facility for asbestos, including Category I and Category II non-friable ACM. ACM is material containing more than 1% asbestos as determined using the methods specified in Appendix E, subpart E, 40 CFR part 763, section 1, Polarized Light Microscopy (PLM). The NESHAP classifies ACM as friable or non-friable. Per 40 CFR 61, Subpart M, friable ACM is that which, when dry, may be crumbled, pulverized, or reduced to powder by hand pressure. Non-friable ACM is ACM that, when dry, cannot be crumbled, pulverized, or reduced to powder by hand pressure.

Non-friable ACM is further classified as Category I or Category II. Category I and Category II ACM are distinguished from each other by their potential to release fibers when damaged. Examples of Category I non-friable ACM include but are not limited to: asbestos containing packing, gaskets, resilient floor coverings, resilient floor covering mastic and asphalt roofing products containing more than 1% asbestos as determined using PLM/EPA Method 600R. Category II ACM includes all other non-friable ACM, such as asbestos-cement (A/C) shingles, A/C tiles, and Transite® boards or panels containing more than 1% asbestos. Generally, Category II ACM is more likely to become friable when damaged than is Category I ACM. The applicability of NESHAP to Category I and II ACM depends on:

- (1) the condition of the material at the time of demolition or renovation
- (2) the nature of the operation to which the material will be subjected
- (3) the amount of ACM involved

ACM regulated under NESHAP are identified as Regulated ACMs (RACMs). RACM is defined in §61.141 of the NESHAP and includes:

- (1) Friable ACM
- (2) Category I non-friable ACM that has become friable
- (3) Category I non-friable ACM that will be or has been subjected to sanding, grinding, cutting, or abrading
- (4) Category II non-friable ACM that has already been or is likely to become crumbled, pulverized, or reduced to powder by forces expected to act on the material during demolition or renovation operations regulated by EPA 40 CFR 61 Subpart M, NESHAP for Asbestos

The determination of suspect ACMs was based on visual examination, material age and professional experience. Specifically, materials similar in color and texture were classified into homogenous areas. A homogeneous area is an area of surfacing material (SM), thermal system insulation material (TSI), or miscellaneous material (MM) that is uniform in color, texture, and/or date of installation. The appropriate number of samples were collected from suspect material in each established homogenous area. Egis implemented the “3-5-7” rule of sampling surfacing materials required by the Asbestos Hazard Emergency Response Act (AHERA). Samples were analyzed by PLM via EPA Method 600/R-93/116, by EMSL Laboratories, an NVLAP accredited laboratory.

## 4.0 LABORATORY ANALYTICAL RESULTS

Seventy-Three (73) bulk samples of suspect ACMs were collected for laboratory analysis and two samples tested positive for the presence of asbestos fibers greater than 1% by weight. The table below provides details for the asbestos containing materials. Bulk materials were analyzed for asbestos pursuant to EPA Method 600/R-93/116 using PLM, unless otherwise indicated. Bulk material samples that tested between a trace amount and one percent (1%) asbestos were point counted (400-point counts; EPA 600/R-93/116) to confirm the result. A copy of the laboratory analytical report is provided as *Attachment 1, Laboratory Analytical Report*. Figures depicting the building layout and sample locations are included as *Attachment 2, Figures*. A photographic log that documents the inspection is provided as *Attachment 3, Photographic Log*.

TABLE 4.0.1 – LABORATORY ANALYTICAL RESULTS						
Sample ID	Material Description	Assumed	Material Type	Location(s) (FS/EA)	Estimated Quantity	ACM Category
06 A-C	Exterior Caulk – Building at seams to brick, block and windows	N	MM	EA1;EA2;EA3;EA4	380 LF	Non-Friable - Category II
07 A-C	Exterior Caulk– On Exterior Doors	N	MM	EA1;EA2;EA3	135 LF	Non-Friable - Category II

## 5.0 OTHER HAZARDOUS AND/OR REGULATED MATERIALS

In addition to inspecting the structure(s) for ACMs pursuant to the NESHAP for Asbestos, 40 CFR 61 Subpart M, Egis conducted a visual, non-intrusive inspection of hazardous and/or regulated materials, which did not involve testing. Egis has attempted to accurately quantify the number of hazardous and/or regulated materials that may require decontamination or disposal prior to demolition. Further inspecting, testing, sampling, and/or remediation of any conditions inspected or noted in this report, including actual quantities, remain the sole responsibility of others. Potential hazardous and/or regulated materials addressed by the inspection include, but are not limited to, the following:

- (1) Refrigerants and related chemicals (40 CFR 82);
- (2) Solid wastes which exhibit any of the characteristics of ignitability, corrosivity, reactivity, or toxicity (40 CFR 261.20 – 261.24);
- (3) Hazardous wastes (40 CFR 261.31, 261.32) and discarded commercial chemical products (40 CFR 261.33 & Part 111, Public Act 451 of 1994, as amended);
- (4) Universal wastes, including batteries, pesticides, mercury-containing products, and certain household wastes (40 CFR 273);
- (5) PCB-containing products (40 CFR 761);
- (6) Scrap tires (IC 13-20-14-4);
- (7) Medical or Infectious Wastes (IC 16-41-16 and 410 IAC 1-3-22);
- (8) Electronic Waste (IC 13-20.5)

Lead-based paint (LBP) may be present on the site and is a hazardous substance. Its condition, handling and disposal are regulated by federal, state, and local agencies. LBP does not pose a health threat unless particles are disturbed, become airborne and are inhaled or ingested. Contractors and their employers that will be disturbing the building during demolition should follow all applicable requirements in the OSHA Lead in Construction Standard.

Further testing may be required of debris generated from demolition activities to determine whether the debris should be disposed as hazardous waste under the Resource Conservation and Recovery Act (RCRA) in accordance with 40-CFR Part 261 Subpart C.

Table 5.0.1 below summarizes other regulated materials (ORM) that were observed at the Site by Egis field staff the day of the inspection.

TABLE 5.0.1 – OTHER REGULATED MATERIALS			
Material Description	Location (FS/EA)	Estimated Quantity	Additional Information
FLUORESCENT LAMP	FS2, FS10, FS13, FS14, FS15, FS16, FS18	145 units	4FT Bulbs
FLUORESCENT LAMP	FS5	75 Units	8FT Bulbs

TABLE 5.0.1 – OTHER REGULATED MATERIALS

Material Description	Location (FS/EA)	Estimated Quantity	Additional Information
ELECTRONICS (CRTs, TVs, MONITORS)	FS2, FS18	2 Units	Mitsubishi Tv & computer monitor
SECURITY SYSTEMS	FS18	1 Unit	Alarm panel
FRIDGE, FREEZER, BLAST CHILLERS	FS18	1 Unit	Coke Machine( Refrigerated)
TIRES	FS2, FS4, FS5, FS18	24 Units	Car and semi
Hydraulic Door closers	FS17	1 Unit	On interior entry door
FRIDGE, FREEZER, BLAST CHILLERS	FS16	1 Unit	Mini fridge
USED OIL, FUELS, FUEL OIL OTHER	FS2, FS5, FS6	9 Units	Automatic transmission Fluid various sizes 5 quarts to 55-gallon drums
PAINTS	FS2, FS15, FS16	12 Units	Various sizes 12 oz to 1 gallon
BALLASTS	FS2, FS4, FS5, FS6, FS9, FS13, FS14, FS15, FS16, FS18	76 Units	Associated with 4&8 FT Bulbs
Acetylene tanks	FS2	2 Units	50 LB
USED OIL, FUELS, FUEL OIL OTHER	FS2, FS5, FS6, FS16	29 Units	Various sizes 5 quarts to 55-gallon drums (15w30 & 15w40)
FLAME SENSORS (PILOT LIGHTS)	FS2, FS5	3 Units	Furnace & Ceiling mount heaters
THERMOSTATS	FS2	1 Unit	Next to Furnace on wall
NATURAL GAS METER	EA3	2 Units	
FLUORESCENT LAMP	FS5, FS6	3 Units	Round dome lights in ceiling
SHEETROCK MUD	FS5	5 Units	5 Gallon
GLUE	FS2	1 Unit	Cold process Blind nail & lap adhesive 5 gallon
USED OIL, FUELS, FUEL OIL OTHER	FS2, FS5, FS6	7 Units	Anti-Freeze 55-gallon drums
Monster Blacktop Sealer	FS5	2 Units	5-gallon
PESTICIDES	FS2	1 Unit	Ortho weed killer 1-gallon

TABLE 5.0.1 – OTHER REGULATED MATERIALS

Material Description	Location (FS/EA)	Estimated Quantity	Additional Information
USED OIL, FUELS, FUEL OIL OTHER	FS2, FS5, FS6, FS9	4 Units	Diesel exhaust fluid 55-gallon drums
CHEMICALS	FS2	1 Unit	Ansulite ARC 3&6% 5-gallon
CLEANERS	FS2, FS5, FS6, FS15, FS16	13 Units	Miscellaneous cleaners
USED OIL, FUELS, FUEL OIL OTHER	FS2, FS9	3 Units	Brake fluid 5-quart containers
CLEANERS	FS2	1 Unit	White board cleaner 1-gallon

## 6.0 CONCLUSIONS AND RECOMMENDATIONS

The Indiana Department of Environmental Management (IDEM) Air Quality Division and Licensing and Regulatory Affairs (LARA) Asbestos Program require formal notification of demolition activities for all structures with, or without, regulated asbestos containing materials (RACM) by using state form *Notification of Demolition and Renovation Operations (State Form 44593, available on the IDEM Agency Forms page)*. Notifications must be made at least 10 business days prior to start of work.

Laboratory results for bulk material samples collected during the HRM inspection indicate several building materials are ACMs and are subject to proper abatement and/or disposal based upon planned demolition activities. Refer to 4.0.1 – Laboratory Analytical Results, for a list of all confirmed and assumed ACMs.

## 7.0 LIMITATIONS

Egis BLN USA, Inc. sampled portions of the roof that could be accessed safely. If sample collection and friability assessment could not be completed for a suspect material, then the material should be considered a friable ACM, and managed in accordance with the applicable regulations governing such material. However, if later the asbestos removal contractor or demolition contractor gains access to the roof, the friability can be assessed, and samples collected (where applicable and determined necessary by said contractor). This secondary assessment will provide the necessary information to determine if the roofing material can remain in place, or if it is required (in part or whole) to be removed prior to demolition. Egis BLN USA, Inc. is not responsible for this secondary inspection unless specifically requested to do so.

The conclusions of this report are based solely upon observations made during this evaluation. This report is intended to present a professional opinion of potential asbestos containing materials that may or may not be present at the project property. Our opinions should not be construed as relating to health and safety issues directly. Should additional information become available, this information should be reviewed, and the conclusions herein modified as appropriate. In addition, this report should not be construed as verification of compliance by the present owners or operators of the Site with federal, state, or local laws and regulations. Egis BLN USA, Inc. is responsible to perform our services in a professional manner, consistent with typical industry practice. The conclusions drawn based on this evaluation are deemed as appropriate by Egis BLN USA, Inc. in the exercise of professional judgment.

Our observations did not indicate conditions existing beyond those discussed, although it is possible, limitation of scope or the standard practice precluded recognition of asbestos containing materials present at the site, such as inaccessible and/or confined spaces of the structure. Egis BLN USA, Inc. staff do not enter confined spaces as part of the inspection process. Confined spaces include crawlspaces and attics or any other such space where there is limited ingress and egress.

Egis BLN USA, Inc. reserves the right to determine when and where a confined space may be present and use professional judgment when deciding upon entry. We cannot be held liable for materials that may be present in these spaces and unable to be reported as part of our inspection process. The presence of confined spaces will be reported as applicable, and all limitations expressed herein will apply. Any confined spaces encountered during the inspection are identified in Table 2.1.1 – Accessibility Limitations.

We cannot be held liable for consequential damages, if it is determined in the future that contamination of some type is present at the site. This report should not be considered as a recommendation to purchase, sell, or develop the Site, and the opinions expressed herein are not legal opinions. To evaluate the information contained in this report, the

reader must understand the limitations associated with this assessment. Specifically, the services for this project have been performed in general conformance with the contract negotiated between the RDA and Egis BLN USA, Inc. This report was prepared for the benefit and exclusive use of the RDA, its agents and assigns. Any third-party use of this report or reliance upon the information and opinions therein is the sole responsibility of the third party. Egis BLN USA, Inc. has no responsibility for any damages that may be suffered by a third party because of any decision made or action taken by a third party based on this report.

---

## ATTACHMENT 1 – LABORATORY REPORT



# EMSL Analytical, Inc.

200 Route 130 North Cinnaminson, NJ 08077  
Phone/Fax: (800) 220-3675 / (856) 786-5974  
<http://www.EMSL.com> / [cinnasblab@EMSL.com](mailto:cinnasblab@EMSL.com)

EMSL Order ID: 042502190  
Customer ID: BLNL75  
Customer PO: C240004  
Project ID:

**Attn:** Detroit Project Group  
Egis BLN USA Inc  
51151 W. Pontiac Trail  
Wixom, MI 48393

**Phone:** (313) 408-4893  
**Fax:**  
**Collected:** 1/30/2025  
**Received:** 2/05/2025  
**Analyzed:** 2/10/2025

**Proj:** IC-003 - 700-716 E. Fifth, Gary, IN

## Summary Test Report for Asbestos Analysis of Bulk Material

**Client Sample ID:** 1A-Brick **Lab Sample ID:** 042502190-0001

**Sample Description:** EA1, EA4/Brick Mortar

TEST	Analyzed Date	Color	Non-Asbestos		Asbestos	Comment
			Fibrous	Non-Fibrous		
PLM	2/10/2025	Orange	0.0%	100.0%	None Detected	

**Client Sample ID:** 1A-Mortar

**Lab Sample ID:** 042502190-0001A

**Sample Description:** EA1, EA4/Brick Mortar

TEST	Analyzed Date	Color	Non-Asbestos		Asbestos	Comment
			Fibrous	Non-Fibrous		
PLM	2/10/2025	Gray	0.0%	100.0%	None Detected	

**Client Sample ID:** 1B-Brick

**Lab Sample ID:** 042502190-0002

**Sample Description:** EA1, EA4/Brick Mortar

TEST	Analyzed Date	Color	Non-Asbestos		Asbestos	Comment
			Fibrous	Non-Fibrous		
PLM	2/10/2025	Orange	0.0%	100.0%	None Detected	

**Client Sample ID:** 1B-Mortar

**Lab Sample ID:** 042502190-0002A

**Sample Description:** EA1, EA4/Brick Mortar

TEST	Analyzed Date	Color	Non-Asbestos		Asbestos	Comment
			Fibrous	Non-Fibrous		
PLM	2/10/2025	Gray	0.0%	100.0%	None Detected	

**Client Sample ID:** 1C-Brick

**Lab Sample ID:** 042502190-0003

**Sample Description:** EA1, EA4/Brick Mortar

TEST	Analyzed Date	Color	Non-Asbestos		Asbestos	Comment
			Fibrous	Non-Fibrous		
PLM	2/10/2025	Tan	0.0%	100.0%	None Detected	

**Client Sample ID:** 1C-Mortar

**Lab Sample ID:** 042502190-0003A

**Sample Description:** EA1, EA4/Brick Mortar

TEST	Analyzed Date	Color	Non-Asbestos		Asbestos	Comment
			Fibrous	Non-Fibrous		
PLM	2/10/2025	Gray	0.0%	100.0%	None Detected	

**Client Sample ID:** 2A-Block

**Lab Sample ID:** 042502190-0004

**Sample Description:** EA1, EA4/Block\_Mortar - Rough Pattern

TEST	Analyzed Date	Color	Non-Asbestos		Asbestos	Comment
			Fibrous	Non-Fibrous		
PLM	2/10/2025	Red	0.0%	100.0%	None Detected	



# EMSL Analytical, Inc.

200 Route 130 North Cinnaminson, NJ 08077  
Phone/Fax: (800) 220-3675 / (856) 786-5974  
<http://www.EMSL.com> / [cinnasblab@EMSL.com](mailto:cinnasblab@EMSL.com)

EMSL Order ID: 042502190  
Customer ID: BLNL75  
Customer PO: C240004  
Project ID:

## Summary Test Report for Asbestos Analysis of Bulk Material

**Client Sample ID:** 2A-Mortar **Lab Sample ID:** 042502190-0004A

**Sample Description:** EA1, EA4/Block\_Mortar - Rough Pattern

TEST	Analyzed Date	Color	Non-Asbestos		Asbestos	Comment
			Fibrous	Non-Fibrous		
PLM	2/10/2025	Red	0.0%	100.0%	None Detected	

**Client Sample ID:** 2B-Block **Lab Sample ID:** 042502190-0005

**Sample Description:** EA1, EA4/Block\_Mortar - Rough Pattern

TEST	Analyzed Date	Color	Non-Asbestos		Asbestos	Comment
			Fibrous	Non-Fibrous		
PLM	2/10/2025	Red	0.0%	100.0%	None Detected	

**Client Sample ID:** 2B-Mortar **Lab Sample ID:** 042502190-0005A

**Sample Description:** EA1, EA4/Block\_Mortar - Rough Pattern

TEST	Analyzed Date	Color	Non-Asbestos		Asbestos	Comment
			Fibrous	Non-Fibrous		
PLM	2/10/2025	Red	0.0%	100.0%	None Detected	

**Client Sample ID:** 2C-Block **Lab Sample ID:** 042502190-0006

**Sample Description:** EA1, EA4/Block\_Mortar - Rough Pattern

TEST	Analyzed Date	Color	Non-Asbestos		Asbestos	Comment
			Fibrous	Non-Fibrous		
PLM	2/10/2025	White/Red	0.0%	100.0%	None Detected	

**Client Sample ID:** 2C-Mortar **Lab Sample ID:** 042502190-0006A

**Sample Description:** EA1, EA4/Block\_Mortar - Rough Pattern

TEST	Analyzed Date	Color	Non-Asbestos		Asbestos	Comment
			Fibrous	Non-Fibrous		
PLM	2/10/2025	Red	0.0%	100.0%	None Detected	

**Client Sample ID:** 3A-Block **Lab Sample ID:** 042502190-0007

**Sample Description:** EA 2-4/Block\_Mortar - Smooth Pattern

TEST	Analyzed Date	Color	Non-Asbestos		Asbestos	Comment
			Fibrous	Non-Fibrous		
PLM	2/10/2025	Beige	0.0%	100.0%	None Detected	

**Client Sample ID:** 3A-Mortar **Lab Sample ID:** 042502190-0007A

**Sample Description:** EA 2-4/Block\_Mortar - Smooth Pattern

TEST	Analyzed Date	Color	Non-Asbestos		Asbestos	Comment
			Fibrous	Non-Fibrous		
PLM	2/10/2025	Gray	0.0%	100.0%	None Detected	

**Client Sample ID:** 3B-Block **Lab Sample ID:** 042502190-0008

**Sample Description:** EA 2-4/Block\_Mortar - Smooth Pattern

TEST	Analyzed Date	Color	Non-Asbestos		Asbestos	Comment
			Fibrous	Non-Fibrous		
PLM	2/10/2025	Beige	0.0%	100.0%	None Detected	



# EMSL Analytical, Inc.

200 Route 130 North Cinnaminson, NJ 08077  
Phone/Fax: (800) 220-3675 / (856) 786-5974  
<http://www.EMSL.com> / [cinnasblab@EMSL.com](mailto:cinnasblab@EMSL.com)

EMSL Order ID: 042502190  
Customer ID: BLNL75  
Customer PO: C240004  
Project ID:

## Summary Test Report for Asbestos Analysis of Bulk Material

**Client Sample ID:** 3B-Mortar **Lab Sample ID:** 042502190-0008A

**Sample Description:** EA 2-4/Block\_Mortar - Smooth Pattern

TEST	Analyzed Date	Color	Non-Asbestos		Asbestos	Comment
			Fibrous	Non-Fibrous		
PLM	2/10/2025	Gray	0.0%	100.0%	None Detected	

**Client Sample ID:** 3C-Block **Lab Sample ID:** 042502190-0009

**Sample Description:** EA 2-4/Block\_Mortar - Smooth Pattern

TEST	Analyzed Date	Color	Non-Asbestos		Asbestos	Comment
			Fibrous	Non-Fibrous		
PLM	2/10/2025	Gray/White	0.0%	100.0%	None Detected	

**Client Sample ID:** 3C-Mortar **Lab Sample ID:** 042502190-0009A

**Sample Description:** EA 2-4/Block\_Mortar - Smooth Pattern

TEST	Analyzed Date	Color	Non-Asbestos		Asbestos	Comment
			Fibrous	Non-Fibrous		
PLM	2/10/2025	Gray	0.0%	100.0%	None Detected	

**Client Sample ID:** 4A **Lab Sample ID:** 042502190-0010

**Sample Description:** EA 1-4/Glass Block Mortar

TEST	Analyzed Date	Color	Non-Asbestos		Asbestos	Comment
			Fibrous	Non-Fibrous		
PLM	2/10/2025	Gray	0.0%	100.0%	None Detected	

**Client Sample ID:** 4B **Lab Sample ID:** 042502190-0011

**Sample Description:** EA 1-4/Glass Block Mortar

TEST	Analyzed Date	Color	Non-Asbestos		Asbestos	Comment
			Fibrous	Non-Fibrous		
PLM	2/10/2025	Gray	0.0%	100.0%	None Detected	

**Client Sample ID:** 4C **Lab Sample ID:** 042502190-0012

**Sample Description:** EA 1-4/Glass Block Mortar

TEST	Analyzed Date	Color	Non-Asbestos		Asbestos	Comment
			Fibrous	Non-Fibrous		
PLM	2/10/2025	Gray/White	0.0%	100.0%	None Detected	

**Client Sample ID:** 5A **Lab Sample ID:** 042502190-0013

**Sample Description:** EA2, EA3/Asphalt Paving

TEST	Analyzed Date	Color	Non-Asbestos		Asbestos	Comment
			Fibrous	Non-Fibrous		
PLM	2/10/2025	Black	0.0%	100.0%	None Detected	

**Client Sample ID:** 5B **Lab Sample ID:** 042502190-0014

**Sample Description:** EA2, EA3/Asphalt Paving

TEST	Analyzed Date	Color	Non-Asbestos		Asbestos	Comment
			Fibrous	Non-Fibrous		
PLM	2/10/2025	Black	0.0%	100.0%	None Detected	



# EMSL Analytical, Inc.

200 Route 130 North Cinnaminson, NJ 08077  
Phone/Fax: (800) 220-3675 / (856) 786-5974  
<http://www.EMSL.com> / [cinnasblab@EMSL.com](mailto:cinnasblab@EMSL.com)

EMSL Order ID: 042502190  
Customer ID: BLNL75  
Customer PO: C240004  
Project ID:

## Summary Test Report for Asbestos Analysis of Bulk Material

**Client Sample ID:** 5C **Lab Sample ID:** 042502190-0015  
**Sample Description:** EA2, EA3/Asphalt Paving

TEST	Analyzed Date	Color	Non-Asbestos		Asbestos	Comment
			Fibrous	Non-Fibrous		
PLM	2/10/2025	Black	0.0%	100.0%	None Detected	

**Client Sample ID:** 6A **Lab Sample ID:** 042502190-0016  
**Sample Description:** EA 1-4/Exterior Caulk

TEST	Analyzed Date	Color	Non-Asbestos		Asbestos	Comment
			Fibrous	Non-Fibrous		
PLM	2/10/2025	Gray	0.0%	96.0%	4% Chrysotile	

**Client Sample ID:** 6B **Lab Sample ID:** 042502190-0017  
**Sample Description:** EA 1-4/Exterior Caulk

TEST	Analyzed Date	Color	Non-Asbestos		Asbestos	Comment
			Fibrous	Non-Fibrous		
PLM	2/10/2025				Positive Stop (Not Analyzed)	

**Client Sample ID:** 6C **Lab Sample ID:** 042502190-0018  
**Sample Description:** EA 1-4/Exterior Caulk

TEST	Analyzed Date	Color	Non-Asbestos		Asbestos	Comment
			Fibrous	Non-Fibrous		
PLM	2/10/2025				Positive Stop (Not Analyzed)	

**Client Sample ID:** 7A **Lab Sample ID:** 042502190-0019  
**Sample Description:** EA 1,2,3/Exterior Caulk - On Exterior Doors

TEST	Analyzed Date	Color	Non-Asbestos		Asbestos	Comment
			Fibrous	Non-Fibrous		
PLM	2/10/2025	Gray/Beige	0.0%	95.0%	5% Chrysotile	

**Client Sample ID:** 7B **Lab Sample ID:** 042502190-0020  
**Sample Description:** EA 1,2,3/Exterior Caulk - On Exterior Doors

TEST	Analyzed Date	Color	Non-Asbestos		Asbestos	Comment
			Fibrous	Non-Fibrous		
PLM	2/10/2025				Positive Stop (Not Analyzed)	

**Client Sample ID:** 7C **Lab Sample ID:** 042502190-0021  
**Sample Description:** EA 1,2,3/Exterior Caulk - On Exterior Doors

TEST	Analyzed Date	Color	Non-Asbestos		Asbestos	Comment
			Fibrous	Non-Fibrous		
PLM	2/10/2025				Positive Stop (Not Analyzed)	

**Client Sample ID:** 8A **Lab Sample ID:** 042502190-0022  
**Sample Description:** EA 1-4/Concrete - Windowsills, Roofcaps

TEST	Analyzed Date	Color	Non-Asbestos		Asbestos	Comment
			Fibrous	Non-Fibrous		
PLM	2/10/2025	Gray	0.0%	100.0%	None Detected	



# EMSL Analytical, Inc.

200 Route 130 North Cinnaminson, NJ 08077  
Phone/Fax: (800) 220-3675 / (856) 786-5974  
<http://www.EMSL.com> / [cinnasblab@EMSL.com](mailto:cinnasblab@EMSL.com)

EMSL Order ID: 042502190  
Customer ID: BLNL75  
Customer PO: C240004  
Project ID:

## Summary Test Report for Asbestos Analysis of Bulk Material

**Client Sample ID:** 8B **Lab Sample ID:** 042502190-0023  
**Sample Description:** EA 1-4/Concrete - Windowsills, Roofcaps

TEST	Analyzed Date	Color	Non-Asbestos		Asbestos	Comment
			Fibrous	Non-Fibrous		
PLM	2/10/2025	Gray	0.0%	100.0%	None Detected	

**Client Sample ID:** 8C **Lab Sample ID:** 042502190-0024  
**Sample Description:** EA 1-4/Concrete - Windowsills, Roofcaps

TEST	Analyzed Date	Color	Non-Asbestos		Asbestos	Comment
			Fibrous	Non-Fibrous		
PLM	2/10/2025	Gray	0.0%	100.0%	None Detected	

**Client Sample ID:** 9A **Lab Sample ID:** 042502190-0025  
**Sample Description:** EA1, EA2/Concrete - Sidewalk

TEST	Analyzed Date	Color	Non-Asbestos		Asbestos	Comment
			Fibrous	Non-Fibrous		
PLM	2/10/2025	Gray	0.0%	100.0%	None Detected	

**Client Sample ID:** 9B **Lab Sample ID:** 042502190-0026  
**Sample Description:** EA1, EA2/Concrete - Sidewalk

TEST	Analyzed Date	Color	Non-Asbestos		Asbestos	Comment
			Fibrous	Non-Fibrous		
PLM	2/10/2025	Gray	0.0%	100.0%	None Detected	

**Client Sample ID:** 9C **Lab Sample ID:** 042502190-0027  
**Sample Description:** EA1, EA2/Concrete - Sidewalk

TEST	Analyzed Date	Color	Non-Asbestos		Asbestos	Comment
			Fibrous	Non-Fibrous		
PLM	2/10/2025	Gray	0.0%	100.0%	None Detected	

**Client Sample ID:** 10A **Lab Sample ID:** 042502190-0028  
**Sample Description:** FS 1/Concrete - Slab

TEST	Analyzed Date	Color	Non-Asbestos		Asbestos	Comment
			Fibrous	Non-Fibrous		
PLM	2/10/2025	Tan	0.0%	100.0%	None Detected	

**Client Sample ID:** 10B **Lab Sample ID:** 042502190-0029  
**Sample Description:** FS 1/Concrete - Slab

TEST	Analyzed Date	Color	Non-Asbestos		Asbestos	Comment
			Fibrous	Non-Fibrous		
PLM	2/10/2025	Tan	0.0%	100.0%	None Detected	

**Client Sample ID:** 10C **Lab Sample ID:** 042502190-0030  
**Sample Description:** FS 1/Concrete - Slab

TEST	Analyzed Date	Color	Non-Asbestos		Asbestos	Comment
			Fibrous	Non-Fibrous		
PLM	2/10/2025	Tan	0.0%	100.0%	None Detected	



# EMSL Analytical, Inc.

200 Route 130 North Cinnaminson, NJ 08077  
Phone/Fax: (800) 220-3675 / (856) 786-5974  
<http://www.EMSL.com> / [cinnasblab@EMSL.com](mailto:cinnasblab@EMSL.com)

EMSL Order ID: 042502190  
Customer ID: BLNL75  
Customer PO: C240004  
Project ID:

## Summary Test Report for Asbestos Analysis of Bulk Material

**Client Sample ID:** 11A **Lab Sample ID:** 042502190-0031  
**Sample Description:** FS 2/Wallboard - Peg Board

TEST	Analyzed Date	Color	Non-Asbestos		Asbestos	Comment
			Fibrous	Non-Fibrous		
PLM	2/10/2025	Tan	95.0%	5.0%	None Detected	

**Client Sample ID:** 11B **Lab Sample ID:** 042502190-0032  
**Sample Description:** FS 2/Wallboard - Peg Board

TEST	Analyzed Date	Color	Non-Asbestos		Asbestos	Comment
			Fibrous	Non-Fibrous		
PLM	2/10/2025	Tan	95.0%	5.0%	None Detected	

**Client Sample ID:** 11C **Lab Sample ID:** 042502190-0033  
**Sample Description:** FS 2/Wallboard - Peg Board

TEST	Analyzed Date	Color	Non-Asbestos		Asbestos	Comment
			Fibrous	Non-Fibrous		
PLM	2/10/2025	Tan	95.0%	5.0%	None Detected	

**Client Sample ID:** 12A-Mud **Lab Sample ID:** 042502190-0034  
**Sample Description:** FS 2,5,6,7,8,9,10,11,12,13,14,15,16,17,18,19,20/Drywall, Tape & Mud - Walls & Ceilings

TEST	Analyzed Date	Color	Non-Asbestos		Asbestos	Comment
			Fibrous	Non-Fibrous		
PLM	2/10/2025	White	0.0%	100.0%	None Detected	

**Client Sample ID:** 12A-Tape **Lab Sample ID:** 042502190-0034A  
**Sample Description:** FS 2,5,6,7,8,9,10,11,12,13,14,15,16,17,18,19,20/Drywall, Tape & Mud - Walls & Ceilings

TEST	Analyzed Date	Color	Non-Asbestos		Asbestos	Comment
			Fibrous	Non-Fibrous		
PLM	2/10/2025	Beige	98.0%	2.0%	None Detected	

**Client Sample ID:** 12A-Drywall **Lab Sample ID:** 042502190-0034B  
**Sample Description:** FS 2,5,6,7,8,9,10,11,12,13,14,15,16,17,18,19,20/Drywall, Tape & Mud - Walls & Ceilings

TEST	Analyzed Date	Color	Non-Asbestos		Asbestos	Comment
			Fibrous	Non-Fibrous		
PLM	2/10/2025	Tan/White	10.0%	90.0%	None Detected	

**Client Sample ID:** 12B-Mud **Lab Sample ID:** 042502190-0035  
**Sample Description:** FS 2,5,6,7,8,9,10,11,12,13,14,15,16,17,18,19,20/Drywall, Tape & Mud - Walls & Ceilings

TEST	Analyzed Date	Color	Non-Asbestos		Asbestos	Comment
			Fibrous	Non-Fibrous		
PLM	2/10/2025	White	0.0%	100.0%	None Detected	

**Client Sample ID:** 12B-Tape **Lab Sample ID:** 042502190-0035A  
**Sample Description:** FS 2,5,6,7,8,9,10,11,12,13,14,15,16,17,18,19,20/Drywall, Tape & Mud - Walls & Ceilings

TEST	Analyzed Date	Color	Non-Asbestos		Asbestos	Comment
			Fibrous	Non-Fibrous		
PLM	2/10/2025	Beige	98.0%	2.0%	None Detected	



# EMSL Analytical, Inc.

200 Route 130 North Cinnaminson, NJ 08077  
Phone/Fax: (800) 220-3675 / (856) 786-5974  
<http://www.EMSL.com> / [cinnasblab@EMSL.com](mailto:cinnasblab@EMSL.com)

EMSL Order ID: 042502190  
Customer ID: BLNL75  
Customer PO: C240004  
Project ID:

## Summary Test Report for Asbestos Analysis of Bulk Material

**Client Sample ID:** 12B-Drywall **Lab Sample ID:** 042502190-0035B

**Sample Description:** FS 2,5,6,7,8,9,10,11,12,13,14,15,16,17,18,19,20/Drywall, Tape & Mud - Walls & Ceilings

TEST	Analyzed Date	Color	Non-Asbestos		Asbestos	Comment
			Fibrous	Non-Fibrous		
PLM	2/10/2025	Tan/White	70.0%	30.0%	None Detected	

**Client Sample ID:** 12C-Mud **Lab Sample ID:** 042502190-0036

**Sample Description:** FS 2,5,6,7,8,9,10,11,12,13,14,15,16,17,18,19,20/Drywall, Tape & Mud - Walls & Ceilings

TEST	Analyzed Date	Color	Non-Asbestos		Asbestos	Comment
			Fibrous	Non-Fibrous		
PLM	2/10/2025	White	0.0%	100.0%	None Detected	

**Client Sample ID:** 12C-Tape **Lab Sample ID:** 042502190-0036A

**Sample Description:** FS 2,5,6,7,8,9,10,11,12,13,14,15,16,17,18,19,20/Drywall, Tape & Mud - Walls & Ceilings

TEST	Analyzed Date	Color	Non-Asbestos		Asbestos	Comment
			Fibrous	Non-Fibrous		
PLM	2/10/2025	Beige	98.0%	2.0%	None Detected	

**Client Sample ID:** 12C-Drywall **Lab Sample ID:** 042502190-0036B

**Sample Description:** FS 2,5,6,7,8,9,10,11,12,13,14,15,16,17,18,19,20/Drywall, Tape & Mud - Walls & Ceilings

TEST	Analyzed Date	Color	Non-Asbestos		Asbestos	Comment
			Fibrous	Non-Fibrous		
PLM	2/10/2025	Tan/White	10.0%	90.0%	None Detected	

**Client Sample ID:** 12D-Mud **Lab Sample ID:** 042502190-0037

**Sample Description:** FS 2,5,6,7,8,9,10,11,12,13,14,15,16,17,18,19,20/Drywall, Tape & Mud - Walls & Ceilings

TEST	Analyzed Date	Color	Non-Asbestos		Asbestos	Comment
			Fibrous	Non-Fibrous		
PLM	2/10/2025	White	0.0%	100.0%	None Detected	

**Client Sample ID:** 12D-Tape **Lab Sample ID:** 042502190-0037A

**Sample Description:** FS 2,5,6,7,8,9,10,11,12,13,14,15,16,17,18,19,20/Drywall, Tape & Mud - Walls & Ceilings

TEST	Analyzed Date	Color	Non-Asbestos		Asbestos	Comment
			Fibrous	Non-Fibrous		
PLM	2/10/2025	Beige	98.0%	2.0%	None Detected	

**Client Sample ID:** 12D-Drywall **Lab Sample ID:** 042502190-0037B

**Sample Description:** FS 2,5,6,7,8,9,10,11,12,13,14,15,16,17,18,19,20/Drywall, Tape & Mud - Walls & Ceilings

TEST	Analyzed Date	Color	Non-Asbestos		Asbestos	Comment
			Fibrous	Non-Fibrous		
PLM	2/10/2025	Tan/White	10.0%	90.0%	None Detected	

**Client Sample ID:** 12E-Mud **Lab Sample ID:** 042502190-0038

**Sample Description:** FS 2,5,6,7,8,9,10,11,12,13,14,15,16,17,18,19,20/Drywall, Tape & Mud - Walls & Ceilings

TEST	Analyzed Date	Color	Non-Asbestos		Asbestos	Comment
			Fibrous	Non-Fibrous		
PLM	2/10/2025	White	0.0%	100.0%	None Detected	



# EMSL Analytical, Inc.

200 Route 130 North Cinnaminson, NJ 08077  
Phone/Fax: (800) 220-3675 / (856) 786-5974  
<http://www.EMSL.com> / [cinnasblab@EMSL.com](mailto:cinnasblab@EMSL.com)

EMSL Order ID: 042502190  
Customer ID: BLNL75  
Customer PO: C240004  
Project ID:

## Summary Test Report for Asbestos Analysis of Bulk Material

**Client Sample ID:** 12E-Drywall **Lab Sample ID:** 042502190-0038A

**Sample Description:** FS 2,5,6,7,8,9,10,11,12,13,14,15,16,17,18,19,20/Drywall, Tape & Mud - Walls & Ceilings

TEST	Analyzed Date	Color	Non-Asbestos		Asbestos	Comment
			Fibrous	Non-Fibrous		
PLM	2/10/2025	White	10.0%	90.0%	None Detected	

**Client Sample ID:** 12E-Tape **Lab Sample ID:** 042502190-0038B

**Sample Description:** FS 2,5,6,7,8,9,10,11,12,13,14,15,16,17,18,19,20/Drywall, Tape & Mud - Walls & Ceilings

TEST	Analyzed Date	Color	Non-Asbestos		Asbestos	Comment
			Fibrous	Non-Fibrous		
PLM	2/10/2025	Tan	95.0%	5.0%	None Detected	

**Client Sample ID:** 12F-Mud **Lab Sample ID:** 042502190-0039

**Sample Description:** FS 2,5,6,7,8,9,10,11,12,13,14,15,16,17,18,19,20/Drywall, Tape & Mud - Walls & Ceilings

TEST	Analyzed Date	Color	Non-Asbestos		Asbestos	Comment
			Fibrous	Non-Fibrous		
PLM	2/10/2025	White	0.0%	100.0%	None Detected	

**Client Sample ID:** 12F-Tape **Lab Sample ID:** 042502190-0039A

**Sample Description:** FS 2,5,6,7,8,9,10,11,12,13,14,15,16,17,18,19,20/Drywall, Tape & Mud - Walls & Ceilings

TEST	Analyzed Date	Color	Non-Asbestos		Asbestos	Comment
			Fibrous	Non-Fibrous		
PLM	2/10/2025	Tan	95.0%	5.0%	None Detected	

**Client Sample ID:** 12F-Drywall **Lab Sample ID:** 042502190-0039B

**Sample Description:** FS 2,5,6,7,8,9,10,11,12,13,14,15,16,17,18,19,20/Drywall, Tape & Mud - Walls & Ceilings

TEST	Analyzed Date	Color	Non-Asbestos		Asbestos	Comment
			Fibrous	Non-Fibrous		
PLM	2/10/2025	White	10.0%	90.0%	None Detected	

**Client Sample ID:** 12G-Mud **Lab Sample ID:** 042502190-0040

**Sample Description:** FS 2,5,6,7,8,9,10,11,12,13,14,15,16,17,18,19,20/Drywall, Tape & Mud - Walls & Ceilings

TEST	Analyzed Date	Color	Non-Asbestos		Asbestos	Comment
			Fibrous	Non-Fibrous		
PLM	2/10/2025	White	0.0%	100.0%	None Detected	

**Client Sample ID:** 12G-Tape **Lab Sample ID:** 042502190-0040A

**Sample Description:** FS 2,5,6,7,8,9,10,11,12,13,14,15,16,17,18,19,20/Drywall, Tape & Mud - Walls & Ceilings

TEST	Analyzed Date	Color	Non-Asbestos		Asbestos	Comment
			Fibrous	Non-Fibrous		
PLM	2/10/2025	Tan	95.0%	5.0%	None Detected	

**Client Sample ID:** 12G-Drywall **Lab Sample ID:** 042502190-0040B

**Sample Description:** FS 2,5,6,7,8,9,10,11,12,13,14,15,16,17,18,19,20/Drywall, Tape & Mud - Walls & Ceilings

TEST	Analyzed Date	Color	Non-Asbestos		Asbestos	Comment
			Fibrous	Non-Fibrous		
PLM	2/10/2025	White	10.0%	90.0%	None Detected	



# EMSL Analytical, Inc.

200 Route 130 North Cinnaminson, NJ 08077  
Phone/Fax: (800) 220-3675 / (856) 786-5974  
<http://www.EMSL.com> / [cinnasblab@EMSL.com](mailto:cinnasblab@EMSL.com)

EMSL Order ID: 042502190  
Customer ID: BLNL75  
Customer PO: C240004  
Project ID:

## Summary Test Report for Asbestos Analysis of Bulk Material

**Client Sample ID:** 13A **Lab Sample ID:** 042502190-0041

**Sample Description:** FS 3/Stack Cement

TEST	Analyzed Date	Color	Non-Asbestos		Asbestos	Comment
			Fibrous	Non-Fibrous		
PLM	2/10/2025	Gray	0.0%	100.0%	None Detected	

**Client Sample ID:** 13B **Lab Sample ID:** 042502190-0042

**Sample Description:** FS 3/Stack Cement

TEST	Analyzed Date	Color	Non-Asbestos		Asbestos	Comment
			Fibrous	Non-Fibrous		
PLM	2/10/2025	Gray	0.0%	100.0%	None Detected	

**Client Sample ID:** 13C **Lab Sample ID:** 042502190-0043

**Sample Description:** FS 3/Stack Cement

TEST	Analyzed Date	Color	Non-Asbestos		Asbestos	Comment
			Fibrous	Non-Fibrous		
PLM	2/10/2025	Tan	0.0%	100.0%	None Detected	

**Client Sample ID:** 14A **Lab Sample ID:** 042502190-0044

**Sample Description:** FS 2,12,14,15,16,17,18,19,20/Insulation - Roll Batt

TEST	Analyzed Date	Color	Non-Asbestos		Asbestos	Comment
			Fibrous	Non-Fibrous		
PLM	2/10/2025	Tan/Black/Yellow	85.0%	15.0%	None Detected	

**Client Sample ID:** 14B **Lab Sample ID:** 042502190-0045

**Sample Description:** FS 2,12,14,15,16,17,18,19,20/Insulation - Roll Batt

TEST	Analyzed Date	Color	Non-Asbestos		Asbestos	Comment
			Fibrous	Non-Fibrous		
PLM	2/10/2025	Tan/Black/Yellow	85.0%	15.0%	None Detected	

**Client Sample ID:** 14C **Lab Sample ID:** 042502190-0046

**Sample Description:** FS 2,12,14,15,16,17,18,19,20/Insulation - Roll Batt

TEST	Analyzed Date	Color	Non-Asbestos		Asbestos	Comment
			Fibrous	Non-Fibrous		
PLM	2/10/2025	Yellow	75.0%	25.0%	None Detected	

**Client Sample ID:** 15A-Ceramic Tile **Lab Sample ID:** 042502190-0047

**Sample Description:** FS 19, FS 20/Ceramic Tile with Grout - Floors

TEST	Analyzed Date	Color	Non-Asbestos		Asbestos	Comment
			Fibrous	Non-Fibrous		
PLM	2/10/2025	Brown	0.0%	100.0%	None Detected	

**Client Sample ID:** 15A-Grout **Lab Sample ID:** 042502190-0047A

**Sample Description:** FS 19, FS 20/Ceramic Tile with Grout - Floors

TEST	Analyzed Date	Color	Non-Asbestos		Asbestos	Comment
			Fibrous	Non-Fibrous		
PLM	2/10/2025	Brown	0.0%	100.0%	None Detected	



# EMSL Analytical, Inc.

200 Route 130 North Cinnaminson, NJ 08077  
Phone/Fax: (800) 220-3675 / (856) 786-5974  
<http://www.EMSL.com> / [cinnasblab@EMSL.com](mailto:cinnasblab@EMSL.com)

EMSL Order ID: 042502190  
Customer ID: BLNL75  
Customer PO: C240004  
Project ID:

## Summary Test Report for Asbestos Analysis of Bulk Material

**Client Sample ID:** 15B-Ceramic Tile **Lab Sample ID:** 042502190-0048

**Sample Description:** FS 19, FS 20/Ceramic Tile with Grout - Floors

TEST	Analyzed Date	Color	Non-Asbestos		Asbestos	Comment
			Fibrous	Non-Fibrous		
PLM	2/10/2025	Brown	0.0%	100.0%	None Detected	

**Client Sample ID:** 15B-Grout **Lab Sample ID:** 042502190-0048A

**Sample Description:** FS 19, FS 20/Ceramic Tile with Grout - Floors

TEST	Analyzed Date	Color	Non-Asbestos		Asbestos	Comment
			Fibrous	Non-Fibrous		
PLM	2/10/2025	Brown	0.0%	100.0%	None Detected	

**Client Sample ID:** 15C-Ceramic Tile **Lab Sample ID:** 042502190-0049

**Sample Description:** FS 19, FS 20/Ceramic Tile with Grout - Floors

TEST	Analyzed Date	Color	Non-Asbestos		Asbestos	Comment
			Fibrous	Non-Fibrous		
PLM	2/10/2025	Brown	0.0%	100.0%	None Detected	

**Client Sample ID:** 15C-Grout **Lab Sample ID:** 042502190-0049A

**Sample Description:** FS 19, FS 20/Ceramic Tile with Grout - Floors

TEST	Analyzed Date	Color	Non-Asbestos		Asbestos	Comment
			Fibrous	Non-Fibrous		
PLM	2/10/2025	Gray	0.0%	100.0%	None Detected	

**Client Sample ID:** 16A-Tile **Lab Sample ID:** 042502190-0050

**Sample Description:** FS 11,12,19,20/Porcelain Tile with Grout - Walls

TEST	Analyzed Date	Color	Non-Asbestos		Asbestos	Comment
			Fibrous	Non-Fibrous		
PLM	2/10/2025	White	0.0%	100.0%	None Detected	

**Client Sample ID:** 16A-Grout **Lab Sample ID:** 042502190-0050A

**Sample Description:** FS 11,12,19,20/Porcelain Tile with Grout - Walls

TEST	Analyzed Date	Color	Non-Asbestos		Asbestos	Comment
			Fibrous	Non-Fibrous		
PLM	2/10/2025	White	0.0%	100.0%	None Detected	

**Client Sample ID:** 16B-Tile **Lab Sample ID:** 042502190-0051

**Sample Description:** FS 11,12,19,20/Porcelain Tile with Grout - Walls

TEST	Analyzed Date	Color	Non-Asbestos		Asbestos	Comment
			Fibrous	Non-Fibrous		
PLM	2/10/2025	White	0.0%	100.0%	None Detected	

**Client Sample ID:** 16B-Grout **Lab Sample ID:** 042502190-0051A

**Sample Description:** FS 11,12,19,20/Porcelain Tile with Grout - Walls

TEST	Analyzed Date	Color	Non-Asbestos		Asbestos	Comment
			Fibrous	Non-Fibrous		
PLM	2/10/2025	White	0.0%	100.0%	None Detected	



# EMSL Analytical, Inc.

200 Route 130 North Cinnaminson, NJ 08077  
Phone/Fax: (800) 220-3675 / (856) 786-5974  
<http://www.EMSL.com> / [cinnasblab@EMSL.com](mailto:cinnasblab@EMSL.com)

EMSL Order ID: 042502190  
Customer ID: BLNL75  
Customer PO: C240004  
Project ID:

## Summary Test Report for Asbestos Analysis of Bulk Material

**Client Sample ID:** 16C-Floor Tile **Lab Sample ID:** 042502190-0052

**Sample Description:** FS 11,12,19,20/Porcelain Tile with Grout - Walls

TEST	Analyzed Date	Color	Non-Asbestos		Asbestos	Comment
			Fibrous	Non-Fibrous		
PLM	2/10/2025		0.0%	100.0%	None Detected	

**Client Sample ID:** 16C-Grout **Lab Sample ID:** 042502190-0052A

**Sample Description:** FS 11,12,19,20/Porcelain Tile with Grout - Walls

TEST	Analyzed Date	Color	Non-Asbestos		Asbestos	Comment
			Fibrous	Non-Fibrous		
PLM	2/10/2025	Gray	0.0%	100.0%	None Detected	

**Client Sample ID:** 17A-Ceramic Tile **Lab Sample ID:** 042502190-0053

**Sample Description:** FS 17/Ceramic Tile with Grout - Floor

TEST	Analyzed Date	Color	Non-Asbestos		Asbestos	Comment
			Fibrous	Non-Fibrous		
PLM	2/10/2025	Brown	0.0%	100.0%	None Detected	

**Client Sample ID:** 17A-Grout **Lab Sample ID:** 042502190-0053A

**Sample Description:** FS 17/Ceramic Tile with Grout - Floor

TEST	Analyzed Date	Color	Non-Asbestos		Asbestos	Comment
			Fibrous	Non-Fibrous		
PLM	2/10/2025	Gray	0.0%	100.0%	None Detected	

**Client Sample ID:** 17A-Thinset **Lab Sample ID:** 042502190-0053B

**Sample Description:** FS 17/Ceramic Tile with Grout - Floor

TEST	Analyzed Date	Color	Non-Asbestos		Asbestos	Comment
			Fibrous	Non-Fibrous		
PLM	2/10/2025	Gray	0.0%	100.0%	None Detected	

**Client Sample ID:** 17B-Ceramic Tile **Lab Sample ID:** 042502190-0054

**Sample Description:** FS 17/Ceramic Tile with Grout - Floor

TEST	Analyzed Date	Color	Non-Asbestos		Asbestos	Comment
			Fibrous	Non-Fibrous		
PLM	2/10/2025	Brown	0.0%	100.0%	None Detected	

**Client Sample ID:** 17B-Grout **Lab Sample ID:** 042502190-0054A

**Sample Description:** FS 17/Ceramic Tile with Grout - Floor

TEST	Analyzed Date	Color	Non-Asbestos		Asbestos	Comment
			Fibrous	Non-Fibrous		
PLM	2/10/2025	Gray	0.0%	100.0%	None Detected	

**Client Sample ID:** 17B-Thinset **Lab Sample ID:** 042502190-0054B

**Sample Description:** FS 17/Ceramic Tile with Grout - Floor

TEST	Analyzed Date	Color	Non-Asbestos		Asbestos	Comment
			Fibrous	Non-Fibrous		
PLM	2/10/2025	Gray	0.0%	100.0%	None Detected	



# EMSL Analytical, Inc.

200 Route 130 North Cinnaminson, NJ 08077  
Phone/Fax: (800) 220-3675 / (856) 786-5974  
<http://www.EMSL.com> / [cinnasblab@EMSL.com](mailto:cinnasblab@EMSL.com)

EMSL Order ID: 042502190  
Customer ID: BLNL75  
Customer PO: C240004  
Project ID:

## Summary Test Report for Asbestos Analysis of Bulk Material

**Client Sample ID:** 17C-Ceramic Tile **Lab Sample ID:** 042502190-0055  
**Sample Description:** FS 17/Ceramic Tile with Grout - Floor

TEST	Analyzed Date	Color	Non-Asbestos		Asbestos	Comment
			Fibrous	Non-Fibrous		
PLM	2/10/2025	Brown	0.0%	100.0%	None Detected	

**Client Sample ID:** 17C-Grout **Lab Sample ID:** 042502190-0055A  
**Sample Description:** FS 17/Ceramic Tile with Grout - Floor

TEST	Analyzed Date	Color	Non-Asbestos		Asbestos	Comment
			Fibrous	Non-Fibrous		
PLM	2/10/2025	Gray	0.0%	100.0%	None Detected	

**Client Sample ID:** 17C-Thinset **Lab Sample ID:** 042502190-0055B  
**Sample Description:** FS 17/Ceramic Tile with Grout - Floor

TEST	Analyzed Date	Color	Non-Asbestos		Asbestos	Comment
			Fibrous	Non-Fibrous		
PLM	2/10/2025	Gray	0.0%	100.0%	None Detected	

**Client Sample ID:** 18A **Lab Sample ID:** 042502190-0056  
**Sample Description:** FS 13-18/Ceiling Tile - 2x2

TEST	Analyzed Date	Color	Non-Asbestos		Asbestos	Comment
			Fibrous	Non-Fibrous		
PLM	2/10/2025	Tan/White	80.0%	20.0%	None Detected	

**Client Sample ID:** 18B **Lab Sample ID:** 042502190-0057  
**Sample Description:** FS 13-18/Ceiling Tile - 2x2

TEST	Analyzed Date	Color	Non-Asbestos		Asbestos	Comment
			Fibrous	Non-Fibrous		
PLM	2/10/2025	Tan/White	80.0%	20.0%	None Detected	

**Client Sample ID:** 18C **Lab Sample ID:** 042502190-0058  
**Sample Description:** FS 13-18/Ceiling Tile - 2x2

TEST	Analyzed Date	Color	Non-Asbestos		Asbestos	Comment
			Fibrous	Non-Fibrous		
PLM	2/10/2025	Tan/White	80.0%	20.0%	None Detected	

**Client Sample ID:** 19A-Cove Base **Lab Sample ID:** 042502190-0059  
**Sample Description:** FS 2,6,13,14,15,16,17,18,19,20/Cove Base with Adhesive

TEST	Analyzed Date	Color	Non-Asbestos		Asbestos	Comment
			Fibrous	Non-Fibrous		
PLM	2/10/2025	Brown	0.0%	100.0%	None Detected	

**Client Sample ID:** 19A-Adhesive **Lab Sample ID:** 042502190-0059A  
**Sample Description:** FS 2,6,13,14,15,16,17,18,19,20/Cove Base with Adhesive

TEST	Analyzed Date	Color	Non-Asbestos		Asbestos	Comment
			Fibrous	Non-Fibrous		
PLM	2/10/2025	Beige	0.0%	100.0%	None Detected	



# EMSL Analytical, Inc.

200 Route 130 North Cinnaminson, NJ 08077  
Phone/Fax: (800) 220-3675 / (856) 786-5974  
<http://www.EMSL.com> / [cinnasblab@EMSL.com](mailto:cinnasblab@EMSL.com)

EMSL Order ID: 042502190  
Customer ID: BLNL75  
Customer PO: C240004  
Project ID:

## Summary Test Report for Asbestos Analysis of Bulk Material

**Client Sample ID:** 19B-Cove Base **Lab Sample ID:** 042502190-0060

**Sample Description:** FS 2,6,13,14,15,16,17,18,19,20/Cove Base with Adhesive

TEST	Analyzed Date	Color	Non-Asbestos		Asbestos	Comment
			Fibrous	Non-Fibrous		
PLM	2/10/2025	Brown	0.0%	100.0%	None Detected	

**Client Sample ID:** 19B-Adhesive **Lab Sample ID:** 042502190-0060A

**Sample Description:** FS 2,6,13,14,15,16,17,18,19,20/Cove Base with Adhesive

TEST	Analyzed Date	Color	Non-Asbestos		Asbestos	Comment
			Fibrous	Non-Fibrous		
PLM	2/10/2025	Beige	0.0%	100.0%	None Detected	

**Client Sample ID:** 19C-Cove Base **Lab Sample ID:** 042502190-0061

**Sample Description:** FS 2,6,13,14,15,16,17,18,19,20/Cove Base with Adhesive

TEST	Analyzed Date	Color	Non-Asbestos		Asbestos	Comment
			Fibrous	Non-Fibrous		
PLM	2/10/2025	Brown	0.0%	100.0%	None Detected	

**Client Sample ID:** 19C-Adhesive **Lab Sample ID:** 042502190-0061A

**Sample Description:** FS 2,6,13,14,15,16,17,18,19,20/Cove Base with Adhesive

TEST	Analyzed Date	Color	Non-Asbestos		Asbestos	Comment
			Fibrous	Non-Fibrous		
PLM	2/10/2025	Tan	0.0%	100.0%	None Detected	

**Client Sample ID:** 20A **Lab Sample ID:** 042502190-0062

**Sample Description:** EA 5/Roofing Material - Flat

TEST	Analyzed Date	Color	Non-Asbestos		Asbestos	Comment
			Fibrous	Non-Fibrous		
PLM	2/10/2025	Black	20.0%	80.0%	None Detected	

**Client Sample ID:** 20B **Lab Sample ID:** 042502190-0063

**Sample Description:** EA 5/Roofing Material - Flat

TEST	Analyzed Date	Color	Non-Asbestos		Asbestos	Comment
			Fibrous	Non-Fibrous		
PLM	2/10/2025	Black	20.0%	80.0%	None Detected	

**Client Sample ID:** 20C **Lab Sample ID:** 042502190-0064

**Sample Description:** EA 5/Roofing Material - Flat

TEST	Analyzed Date	Color	Non-Asbestos		Asbestos	Comment
			Fibrous	Non-Fibrous		
PLM	2/10/2025	Black	20.0%	80.0%	None Detected	

**Client Sample ID:** 21A **Lab Sample ID:** 042502190-0065

**Sample Description:** FS 13-16/Carpet Adhesive

TEST	Analyzed Date	Color	Non-Asbestos		Asbestos	Comment
			Fibrous	Non-Fibrous		
PLM	2/10/2025	Tan	0.0%	100.0%	None Detected	



# EMSL Analytical, Inc.

200 Route 130 North Cinnaminson, NJ 08077  
Phone/Fax: (800) 220-3675 / (856) 786-5974  
<http://www.EMSL.com> / [cinnasblab@EMSL.com](mailto:cinnasblab@EMSL.com)

EMSL Order ID: 042502190  
Customer ID: BLNL75  
Customer PO: C240004  
Project ID:

## Summary Test Report for Asbestos Analysis of Bulk Material

**Client Sample ID:** 21B **Lab Sample ID:** 042502190-0066  
**Sample Description:** FS 13-16/Carpet Adhesive

TEST	Analyzed Date	Color	Non-Asbestos		Asbestos	Comment
			Fibrous	Non-Fibrous		
PLM	2/10/2025	Tan	0.0%	100.0%	None Detected	

**Client Sample ID:** 21C **Lab Sample ID:** 042502190-0067  
**Sample Description:** FS 13-16/Carpet Adhesive

TEST	Analyzed Date	Color	Non-Asbestos		Asbestos	Comment
			Fibrous	Non-Fibrous		
PLM	2/10/2025	Tan	0.0%	100.0%	None Detected	

**Client Sample ID:** 22A **Lab Sample ID:** 042502190-0068  
**Sample Description:** FS 2,5,6/Expansion Joint - Seams to Concrete Slab

TEST	Analyzed Date	Color	Non-Asbestos		Asbestos	Comment
			Fibrous	Non-Fibrous		
PLM	2/10/2025	Black	10.0%	90.0%	None Detected	

**Client Sample ID:** 22B **Lab Sample ID:** 042502190-0069  
**Sample Description:** FS 2,5,6/Expansion Joint - Seams to Concrete Slab

TEST	Analyzed Date	Color	Non-Asbestos		Asbestos	Comment
			Fibrous	Non-Fibrous		
PLM	2/10/2025	Black	10.0%	90.0%	None Detected	

**Client Sample ID:** 22C **Lab Sample ID:** 042502190-0070  
**Sample Description:** FS 2,5,6/Expansion Joint - Seams to Concrete Slab

TEST	Analyzed Date	Color	Non-Asbestos		Asbestos	Comment
			Fibrous	Non-Fibrous		
PLM	2/10/2025	Black	10.0%	90.0%	None Detected	

**Client Sample ID:** 23A **Lab Sample ID:** 042502190-0071  
**Sample Description:** FS 2/Interior Caulk - Door Frame from FS 2 to FS 5

TEST	Analyzed Date	Color	Non-Asbestos		Asbestos	Comment
			Fibrous	Non-Fibrous		
PLM	2/10/2025	Beige	0.0%	100.0%	None Detected	

**Client Sample ID:** 23B **Lab Sample ID:** 042502190-0072  
**Sample Description:** FS 2/Interior Caulk - Door Frame from FS 2 to FS 5

TEST	Analyzed Date	Color	Non-Asbestos		Asbestos	Comment
			Fibrous	Non-Fibrous		
PLM	2/10/2025	Beige	0.0%	100.0%	None Detected	

**Client Sample ID:** 23C **Lab Sample ID:** 042502190-0073  
**Sample Description:** FS 2/Interior Caulk - Door Frame from FS 2 to FS 5

TEST	Analyzed Date	Color	Non-Asbestos		Asbestos	Comment
			Fibrous	Non-Fibrous		
PLM	2/10/2025	Beige	0.0%	100.0%	None Detected	



## EMSL Analytical, Inc.

200 Route 130 North Cinnaminson, NJ 08077  
Phone/Fax: (800) 220-3675 / (856) 786-5974  
<http://www.EMSL.com> / [cinnasblab@EMSL.com](mailto:cinnasblab@EMSL.com)

EMSL Order ID: 042502190  
Customer ID: BLNL75  
Customer PO: C240004  
Project ID:

### Summary Test Report for Asbestos Analysis of Bulk Material

---

#### Analyst(s):

Melissa Hartwig PLM (10)  
Samuel Giraldo PLM (27)  
Timothy Kleehammer PLM (70)

#### Reviewed and approved by:

Samantha Rundstrom, Laboratory Manager  
or Other Approved Signatory

EMSL maintains liability limited to cost of analysis. Interpretation and use of test results are the responsibility of the client. This is a summary report; official reports are available on LabConnect or upon request and relates only to the samples reported above, and may not be reproduced, except in full, without written approval by EMSL. EMSL bears no responsibility for sample collection activities or analytical method limitations. The report reflects the samples as received. Results are generated from the field sampling data (sampling volumes and areas, locations, etc.) provided by the client on the Chain of Custody. Samples are within quality control criteria and met method specifications unless otherwise noted. The above analyses were performed in general compliance with Appendix E to Subpart E of 40 CFR (previously EPA 600/M4-82-020 "Interim Method") but augmented with procedures outlined in the 1993 ("final") version of the method. This report must not be used by the client to claim product certification, approval, or endorsement by NVLAP, NIST or any agency of the federal government. Non-friable organically bound materials present a problem matrix and therefore EMSL recommends gravimetric reduction prior to analysis. Unless requested by the client, building materials manufactured with multiple layers (i.e. linoleum, wallboard, etc.) are reported as a single sample. Estimation of uncertainty is available on request.

Samples analyzed by EMSL Analytical, Inc. Rochester, NY NVLAP Lab Code 600183-0

Initial report from: 02/10/2025 17:07:58



## Asbestos Bulk Building Materials - Chain of Custody

EMSL Order Number / Lab Use Only

 EMSL Analytical, Inc.  
 200 Route 130 North  
 Cinnaminson, NJ 08077

 EMSL ANALYTICAL, INC.  
 TESTING LABS • PRODUCTS • TRAINING

#042502190

 PHONE (800) 220-3675  
 EMAIL CinnAsblab@EMSL.com

Customer Information	Customer ID	BLNL75		Billing ID	BLNL75	
	Company Name	Egis		Company Name	Egis	
	Contact Name	Craig Willey		Billing Contact	Ryan Jones	
	Street Address	48797 Alpha Drive		Street Address	8320 Craig Street	
	City, State, Zip	Wixom, MI 48393	Country: USA	City, State, Zip	Indianapolis, IN 46250	Country: USA
	Phone	(248) 863-2934		Phone	(248) 863-2762	
Billing Information	Email(s) for Report	DETROIT-DEMO-EDD-EMPLOYEES.EGIS-US@egis-group.com		Email(s) for Invoice	Ryan.JONES@egis-group.com; Beth.Senn@egis-group.com	
	Project Information					
Project Name/No: IC-003 - 700-716 E. Fifth , Gary IN				Purchase Order: C240004		
EMSL LIMS Project ID: (If applicable, EMSL will provide)				US State where samples collected: MICHIGAN		
				State of Connecticut (CT) must select project location: <input type="checkbox"/> Commercial (Taxable) <input type="checkbox"/> Residential (Non-Taxable)		
Sampled By Name: Tom Wilkewitz		Sampled By Signature: <i>Tom Wilkewitz</i>		Date Sample: 1/30/2025		No. of Samples: 73

## Turn-Around-Time (TAT)

☒ 72 Hours

Please call ahead for large projects and/or turnaround times 6 Hours or Less. \*32 Hour TAT available for select tests only; samples must be submitted by 11:30am.

## Test Selection

PLM - Bulk (reporting limit)☒ PLM EPA 600/R-93/116 (<1%)TEM - Bulk

## Other Tests (please specify)

 Point Count all samples  $\leq 1\%$  asbestos  
 Point Count NOB material samples  $\leq 1\%$  asbestos by PLM EPA  
 NOB-EPA/600/R-93/116 w/ Gravimetric Reduction (TRL 0.5%)

FedEx # 2849 2222 3596

☒ Positive Stop - Clearly Identified Homogeneous Areas

Sample Number	HA Number	Sample Location	Material Description
1 - A, B, C	BM	EA1, EA4	Brick_Mortar -
2 - A, B, C	BM	EA1, EA4	Block_Mortar - Rough pattern
3 - A, B, C	BM	EA 2-4	Block_Mortar - Smooth pattern
4 - A, B, C	GM	EA 1-4	Glass Block Mortar -
5 - A, B, C	ASP	EA2, EA3	Asphalt_Paving -
6 - A, B, C	EC	EA 1-4	Exterior_Caulk -
7 - A, B, C	EC	EA 1,2,3	Exterior_Caulk - On Exterior Doors
8 - A, B, C	CC	EA 1-4	Concrete - Windowsills, Roofcaps

Special Instructions and/or Regulatory Requirements (Sample Specifications, Processing Methods, Limits of Detection, etc.)

Please provide EDD in CSV format

Method of Shipment		Lab Location ROCHESTER NY		Sample Condition Upon Receipt	
Relinquished by: <i>Tom Wilkewitz</i>	Date/Time: 1-30-25/2000	Received by:	Date/Time:	Received by:	Date/Time:
Relinquished by:	Date/Time:	Received by:	Date/Time:	Received by:	Date/Time:

 RECEIVED  
 FEB 05 2025  
 BY: 1000



## Asbestos Bulk Building Materials - Chain of Custody

EMSL Order Number / Lab Use Only

EMSL Analytical, Inc.  
200 Route 130 North  
Cinnaminson, NJ 08077

PHONE (800) 220-3675  
EMAIL CinnAsblab@EMSL.com

#042502190

EMSL ANALYTICAL, INC.  
TESTING LABS • PRODUCTS • TRAINING

Additional Pages of the Chain of Custody are only necessary if needed for additional sample

IC-003 - 700-716 E. Fifth, Gary IN

Special Instructions and/or Regulatory Requirements (Sample Specifications, Processing Methods, Limits of Detection, etc.)

Sample Number	HA Number	Sample Location	Material Description
9 - A, B, C	CC	EA1, EA2	Concrete - Sidewalk
10 - A, B, C	CC	FS 1	Concrete - Slab
11 - A, B, C	WB	FS 2	Wallboard - Peg Board
12 - A, B, C, D, E, F, G	CB	FS 2,5,6,7,8,9,10,11,12,13,14,15,16,17,18,19,20	Drywall, Tape & Mud - Walls & Ceilings
13 - A, B, C	SC	FS 3	Stack_Cement -
14 - A, B, C	HHH	FS 2,13,14,15,16,17,18,19,20	Insulation - Roll batt
15 - A, B, C	CTG	FS 19, FS 20	Ceramic_Tile_with_Grout - Floors
16 - A, B, C	PL	FS 11,12,19,20	Porcelain Tile with grout - Walls
17 - A, B, C	CTG	FS 17	Ceramic_Tile_with_Grout - Floor
18 - A, B, C	CT	FS 13-18	Ceiling_Tile - 2x2
19 - A, B, C	CB	FS 2,6,13,14,15,16,17,18,19,20	Cove_Base_with adhesive -
20 - A, B, C	RM	EA 5	Roofing_Material - Flat
21 - A, B, C	BM	FS 13-16	Carpet Adhesive -
22 - A, B, C	EJ	FS 2,5,6	Expansion_Joint - Seams to Concrete Slab
23 - A, B, C	IC	FS 2	Interior_Caulk - Door frame from FS 2 to FS 5
-	(material)	0	-
-	(material)	0	-
-	(material)	0	-
-	(material)	0	-
-	(material)	0	-
-	(material)	0	-
-	(material)	0	-
-	(material)	0	-
-	(material)	0	-
-	(material)	0	-

Method of Shipment:

Fed Ex

BY:

20 1000

Sample Condition Upon Receipt:

Relinquished by:

Tom Wilkerson

Date/Time:

1-30-25/2000

Received by:

Date/Time:

Relinquished by:

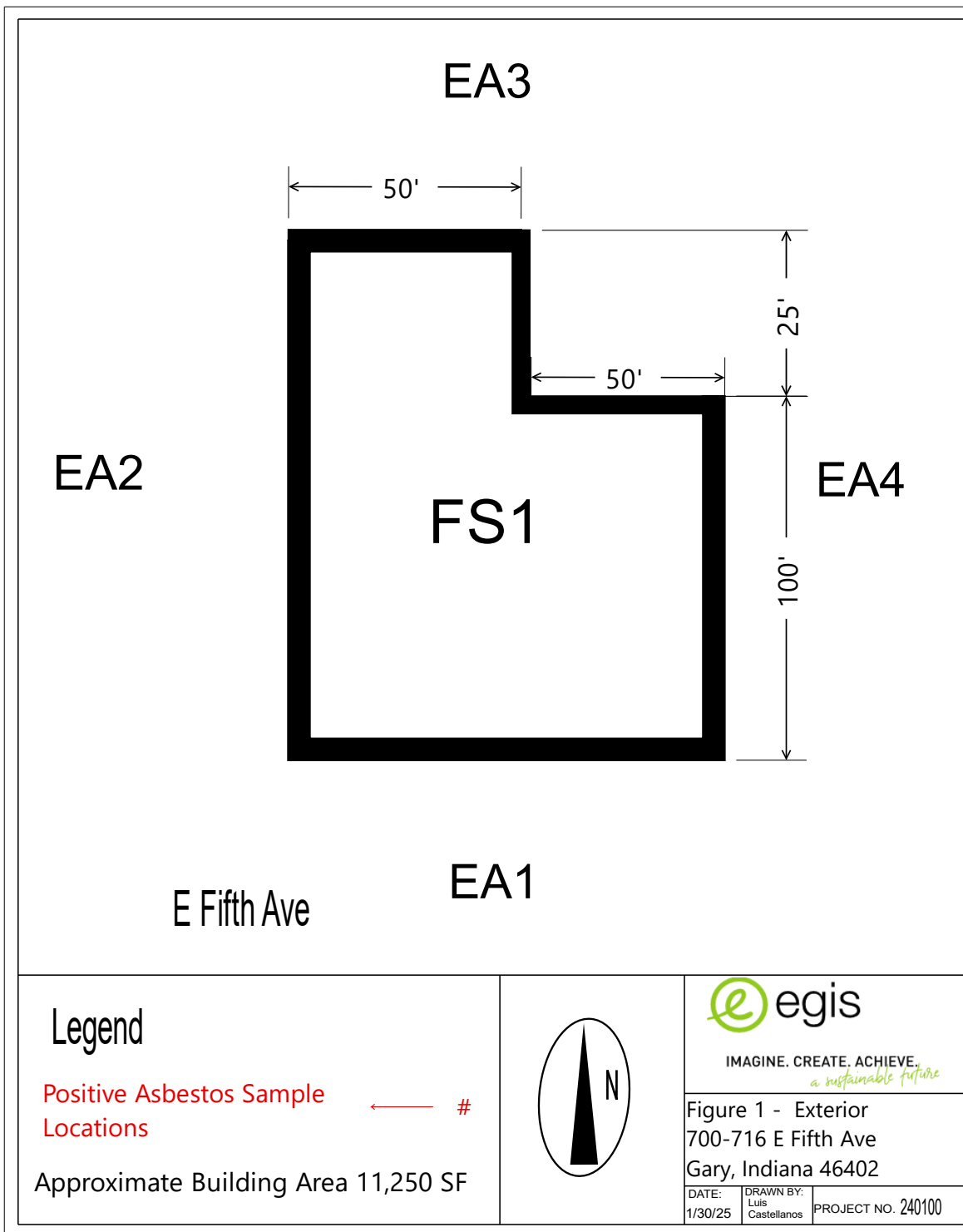
Date/Time:

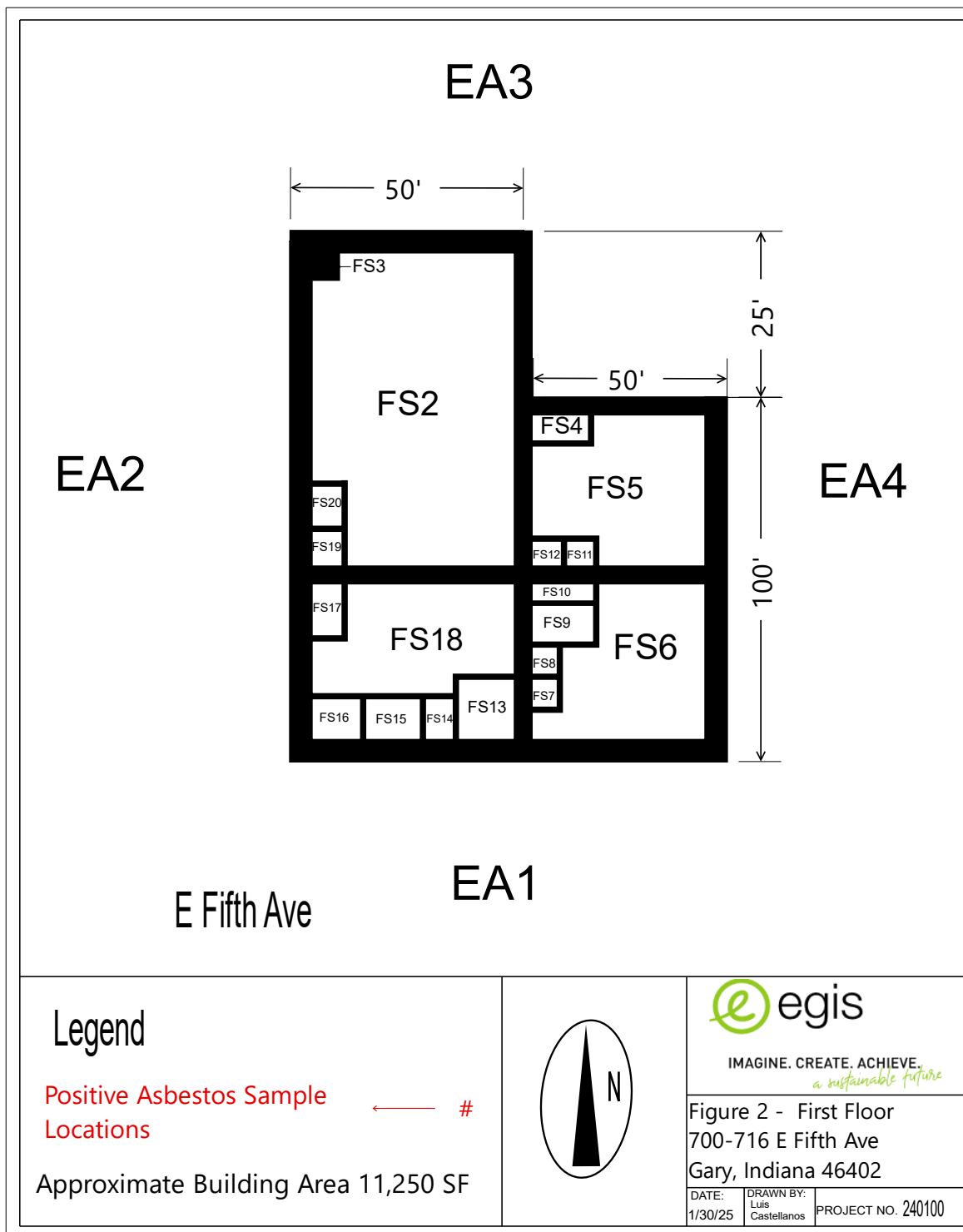
Received by:

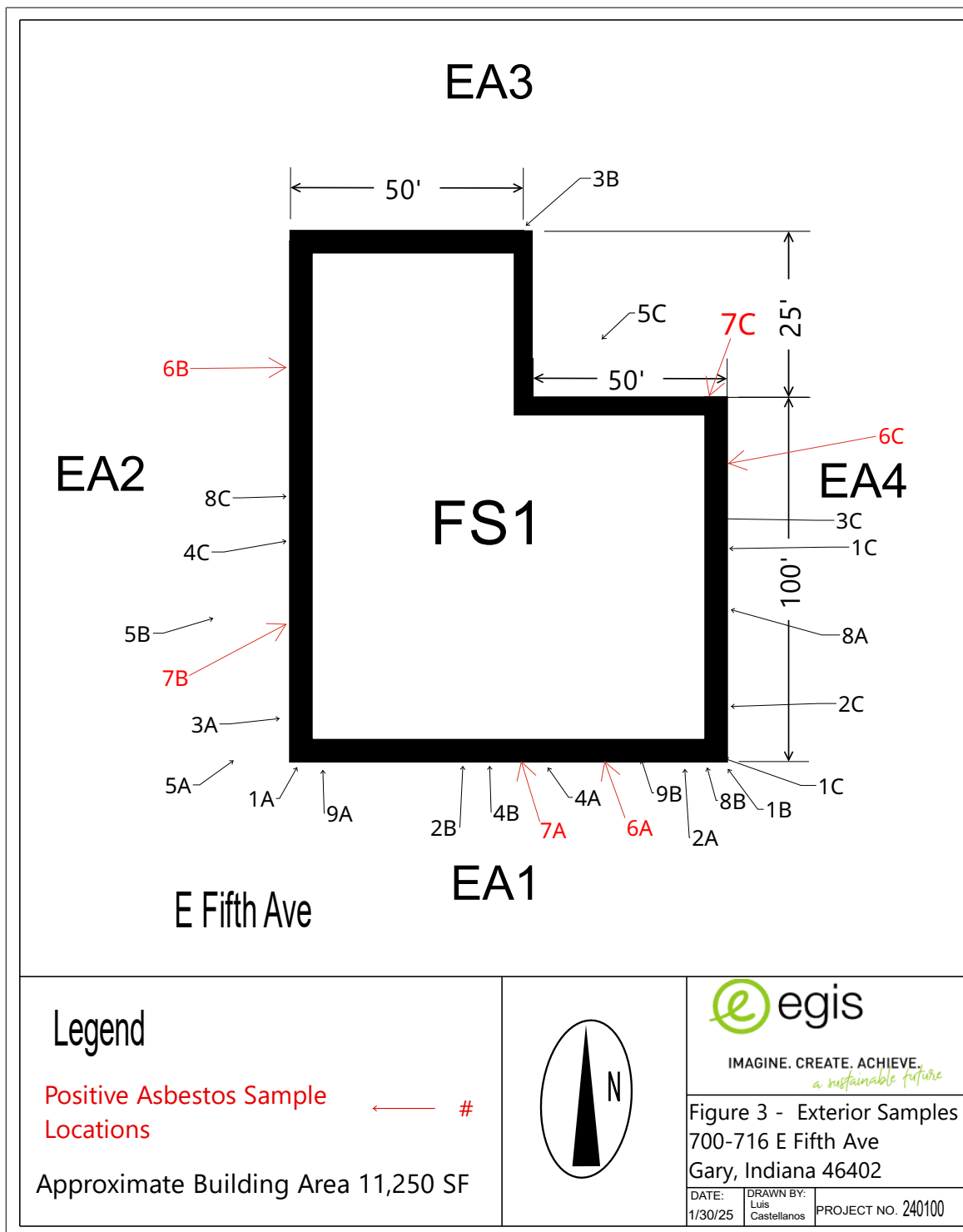
Date/Time:

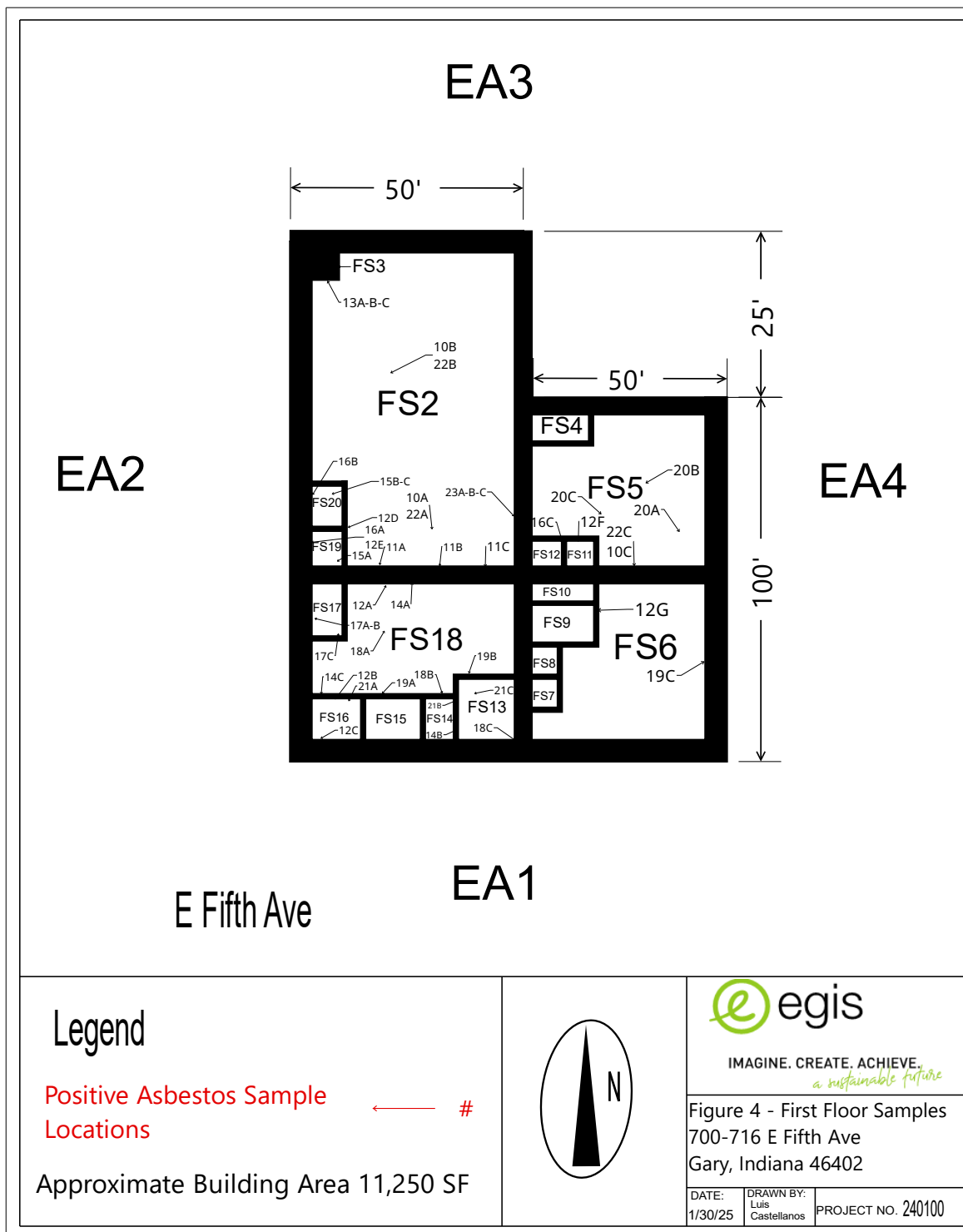
---

## ATTACHMENT 2 – FIGURES









## ATTACHMENT 3 – PHOTOGRAPHIC LOG

City of Gary Commercial Blight Elimination  
Site Address: 700-716 E Fifth Ave



Photo 1:EA 1



Photo 2: EA 2



Photo 3: EA 3



Photo 4: EA 4

City of Gary Commercial Blight Elimination  
Site Address: 700-716 E Fifth Ave



Photo 5: FS 1



Photo 6: FS2



Photo 7: FS 2 (2)

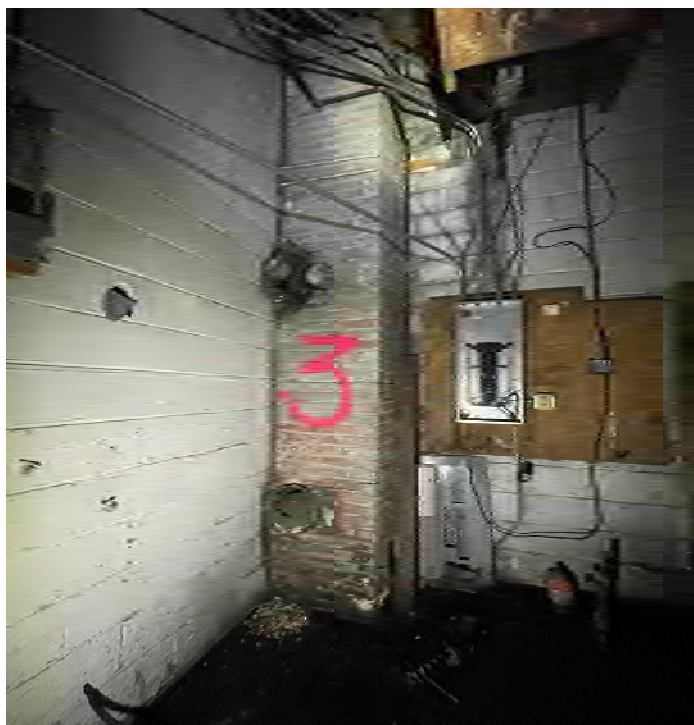


Photo 8: FS 3

City of Gary Commercial Blight Elimination  
Site Address: 700-716 E Fifth Ave



Photo 9: FS 4



Photo 10: FS5

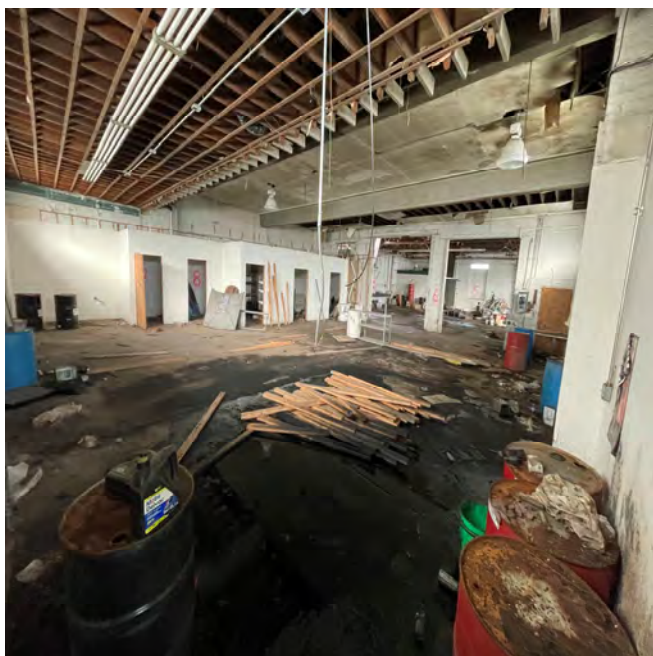


Photo 11: FS6

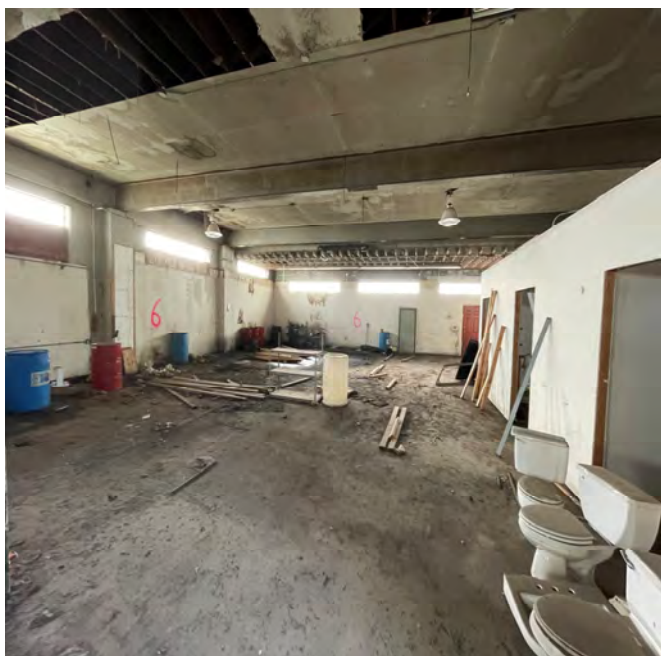


Photo 12: FS 6 (2)

City of Gary Commercial Blight Elimination  
Site Address: 700-716 E Fifth Ave



Photo 13: FS 7



Photo 14: FS 8



Photo 15: FS 9



Photo 16: FS 10

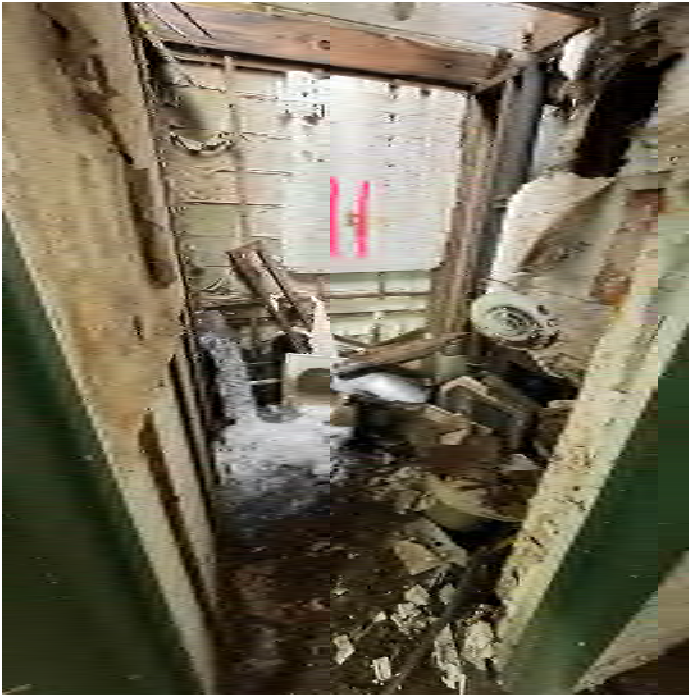


Photo 17: FS 11



Photo 18: FS 12



Photo 19: FS 13



Photo 20: FS 14

City of Gary Commercial Blight Elimination  
Site Address: 700-716 E Fifth Ave



Photo 21: FS 15



Photo 22: FS 16



Photo 23: FS 17



Photo 24: FS 18

City of Gary Commercial Blight Elimination  
Site Address: 700-716 E Fifth Ave



Photo 25: FS 18 (2)



Photo 26: FS 19



Photo 27: FS 20



Photo 28: HA 1

City of Gary Commercial Blight Elimination  
Site Address: 700-716 E Fifth Ave



Photo 29: HA 2



Photo 30: HA 3



Photo 31: HA 4



Photo 32: HA 5

City of Gary Commercial Blight Elimination  
Site Address: 700-716 E Fifth Ave



Photo 33: HA 6



Photo 34: HA 7



Photo 35: HA 8



Photo 36: HA 9



Photo 37: HA 10



Photo 38: HA 11

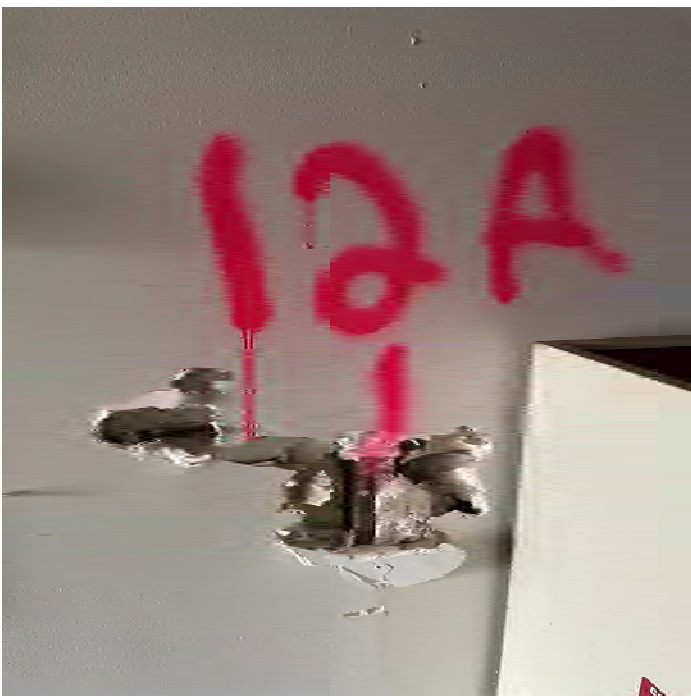


Photo 39: HA 12



Photo 40: HA 13



Photo 41: HA 14



Photo 42: HA 15



Photo 43: HA 16



Photo 44: HA 17



Photo 45: HA 18



Photo 46: HA 19



Photo 47: HA 20



Photo 48: HA 21

City of Gary Commercial Blight Elimination  
Site Address: 700-716 E Fifth Ave



Photo 49: HA 22



Photo 50: HA 23