

INDIANA UNIVERSITY

FY 2025-27 BIENNIAL BUDGET REQUEST STATE BUDGET COMMITTEE

NOVEMBER 13, 2024



OVERVIEW

IU 2030 (STRATEGIC PLAN) PROGRESS

UPDATE ON IU INDIANAPOLIS

BIENNIAL BUDGET REQUEST

Q & A

FY 2025-27 Biennial Budget Request

IU 2030 (Strategic Plan) Progress

THREE PILLARS



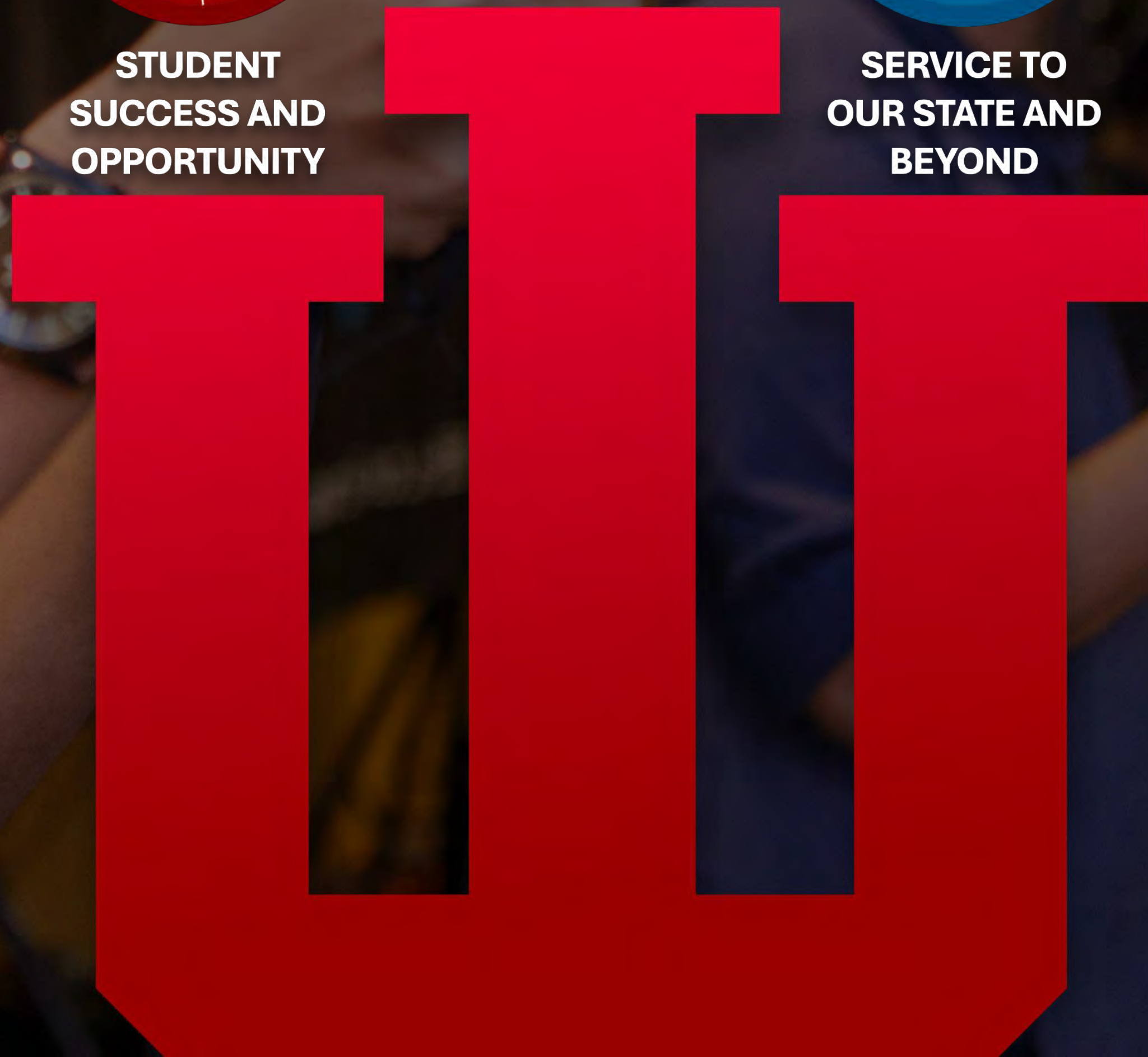
**STUDENT
SUCCESS AND
OPPORTUNITY**



**TRANSFORMATIVE
RESEARCH AND
CREATIVITY**



**SERVICE TO
OUR STATE AND
BEYOND**





Students First

IU is accessible and affordable

Ψ
REDUCTION IN
DFW RATES

Ψ
SUCCESS COACHES

Ψ
GROUPS SCHOLARS

Ψ
HIGH-IMPACT
CAREER EXPERIENCES

Ψ
LOWER DEBT





Transformative Research

Pushing the boundaries of knowledge



\$980M

in research expenditures



SCHOOL OF MEDICINE

#13

ranked public institution
in NIH funding



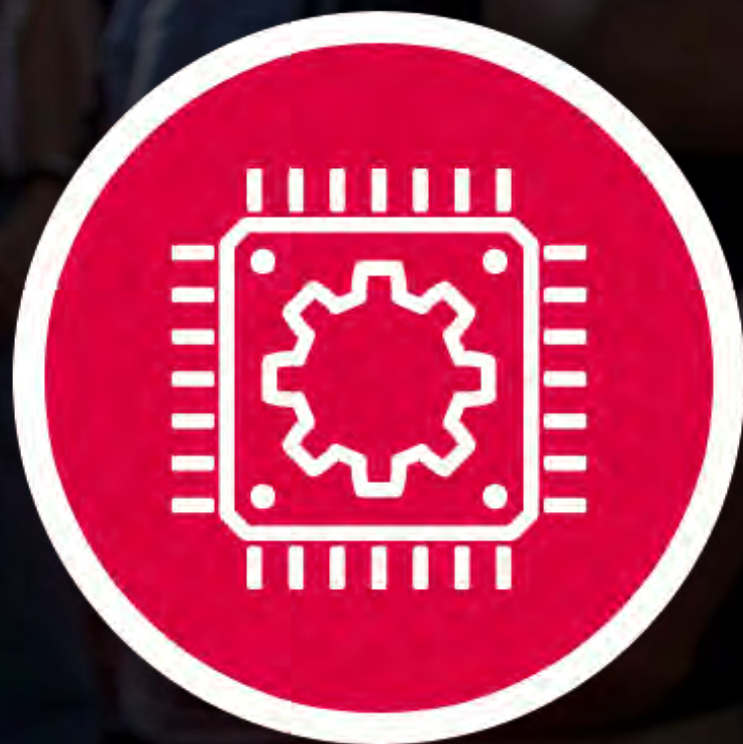
51

research partnerships



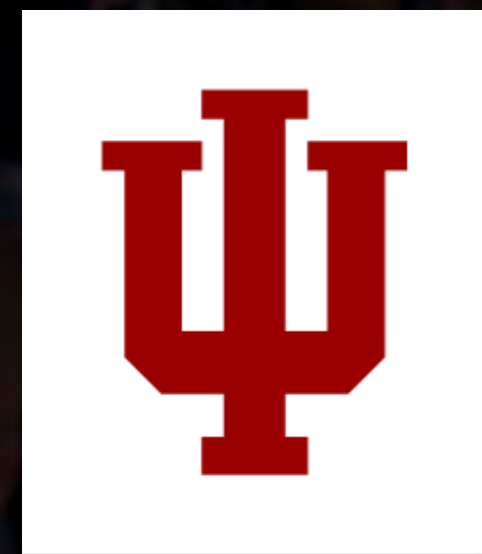
Service to the State

Strengthening the vitality of Indiana



Invested

in microelectronics & biosciences



Launched

IU Innovates



Improved

nursing enrollment to address shortage



Increased

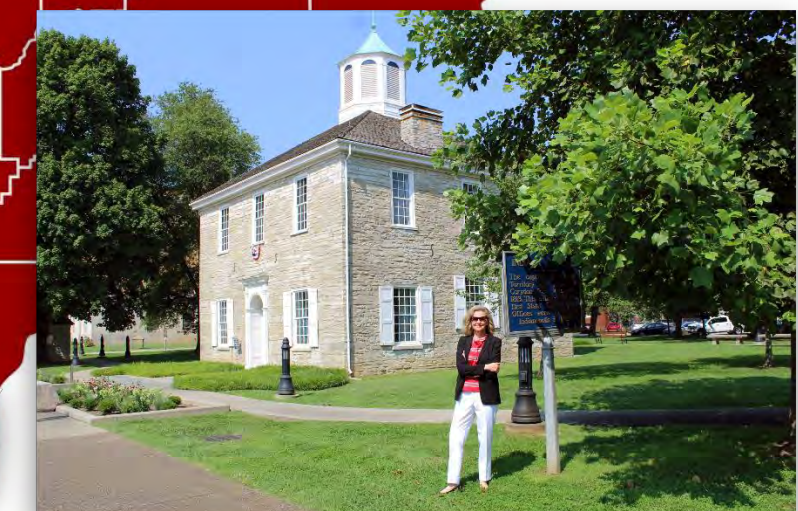
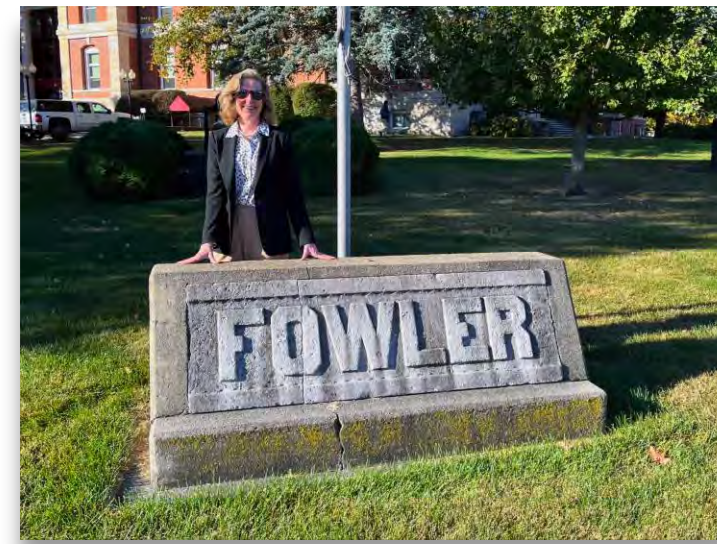
P-12 & rural partnerships statewide



Service to the State

Reaching Hoosiers where they are

- Visited all 92 Indiana counties.
- Meaningful conversations about the challenges and opportunities facing communities.
- IU is committed to college preparedness, workforce development, and the attraction and retention of young talent.
- IU is positioned to drive the growth and development of every Indiana county.





An Aspirational Vision for IU's Third Century



FY 2025-27 Biennial Budget Request

Update on IU Indianapolis



IU Indy

A Premier Urban Research University



88%

students build careers
in Indiana after graduation



Launched

the IU School of Science & the
Department of Computer Science



9%

increase in incoming freshman



IU Indy

Education Made Accessible



Seamless Admission

IPS & Innovation Network Schools



New Pathway

IU Indy B-MD Program
to School of Medicine



IU Indy-Eli Lilly

co-op partnership



IU Indy

Research at Our Core



\$60M

IU Indy Science
Laboratory Building



\$10M

in FY24 used to
recruit faculty



IBRI & IU

Joint Center of Excellence for
Point of Care Precision Medicine

FY 2025-27 Biennial Budget Request

State Budget Request



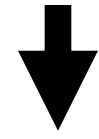
Outcomes-Based Funding

- We support the new outcomes-based performance funding (OBPF) formula, including:
 - Continuing to add only new funding for OBPF and not utilizing reallocation
 - Funding of the research-related OBPF metric
 - Continuing to work with CHE to ensure full disbursement of the OBPF funds
- Provide for an inflationary adjustment for the IU Indy appropriation for each year of the FY 2025-27 biennium





EXISTING



Request 3% Inflationary Adjustment for Existing Line Items
(adjustment for FY26 and flat for FY27) Except:

NEW



CTSI

\$2.5M per year increase



**INDIANA GEOLOGICAL
& WATER SURVEY**

INDIANA UNIVERSITY

IGWS

\$3.1M per year increase



IU Innovates

\$1.3M per year state match



IU Public Safety

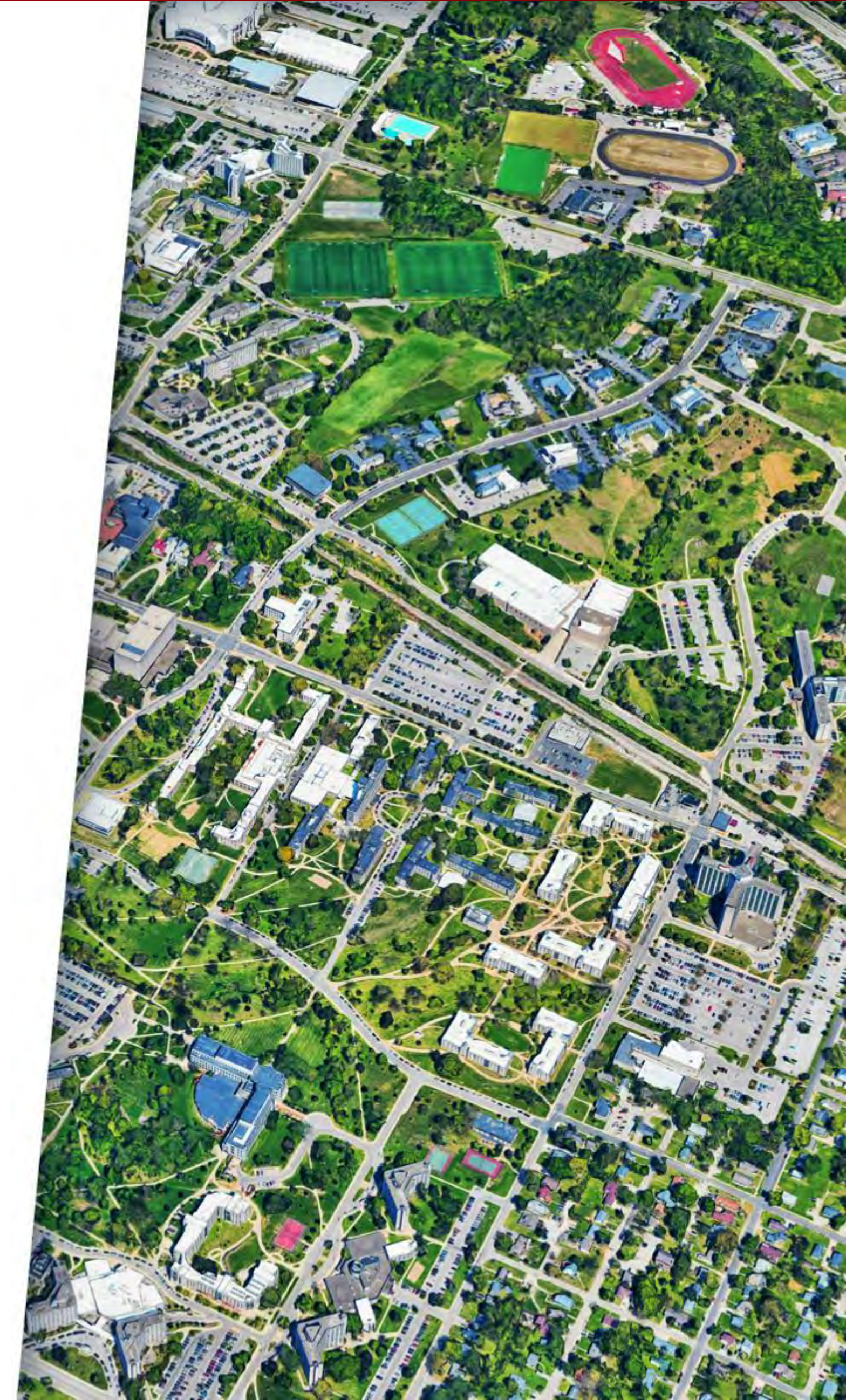
\$5M per year state match

IU State Line Items



IU Capital Priorities

1. IU Bloomington: Science Learning Initiative Phase II
(*Biology Building Renovation and Utility Upgrades*) = \$96M
2. IU Indianapolis: Central Academic Campus Infrastructure
Renovation Phase I = \$89M
3. IU Regional Campus Renovation Projects
(*Instructional classrooms and labs*) = \$25M
4. IU Indianapolis: Science Lab Addition Phase III = \$65M
5. IU Fort Wayne: Health Sciences Building = \$75M
6. IU Bloomington: Science Learning Initiative Phase III = \$80M

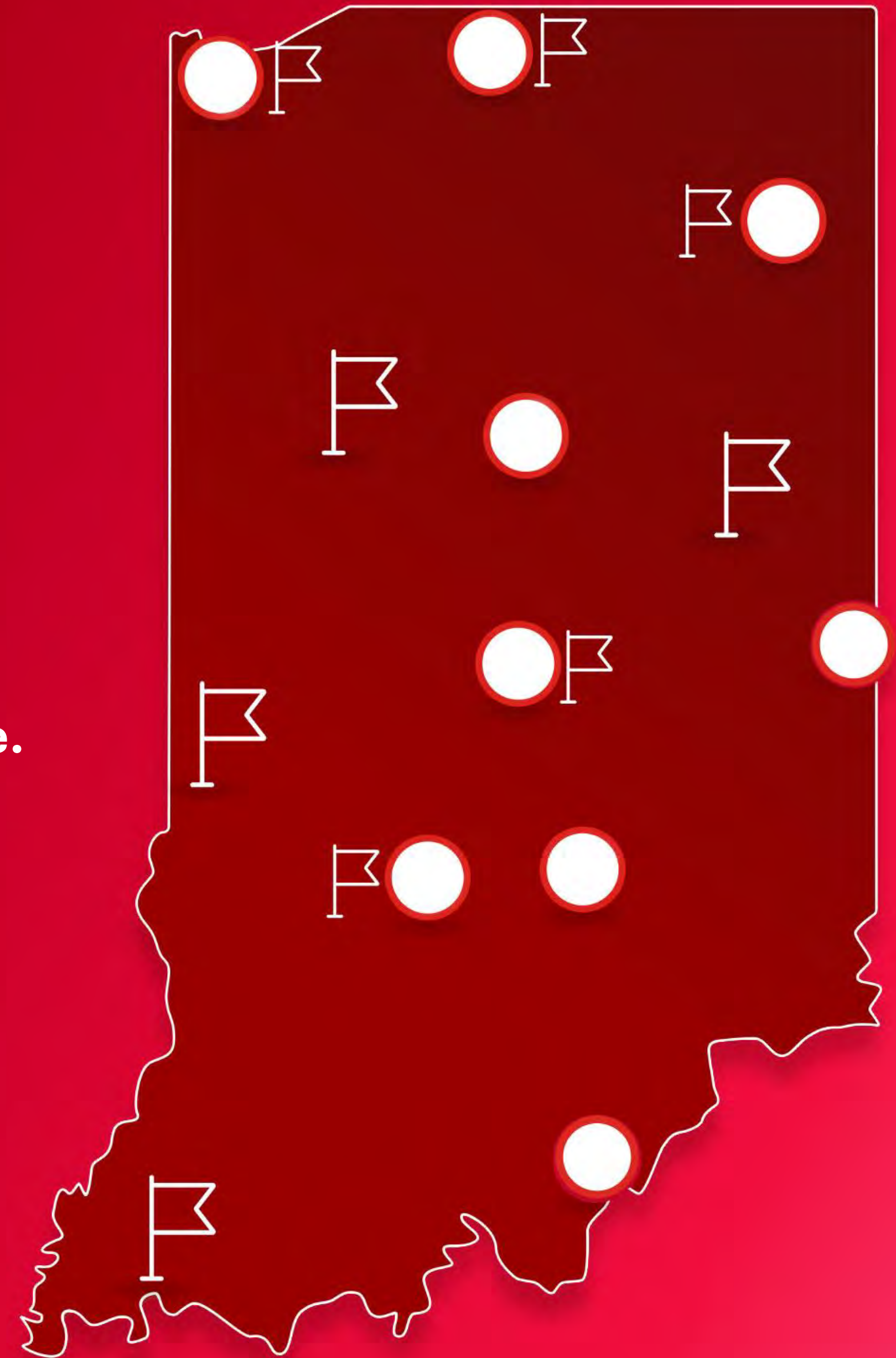


Propelling Indiana Toward an Extraordinary Future.

- Strengthen student retention and improvement in on-time graduation rates.
- Build Indiana's network of health sciences and STEM.
- Attract and retain talent to address workforce needs of the future.
- Grow translational research, commercialization, and startups.

 **IU Campus**

 **IU Medical Center**



THANK YOU!

