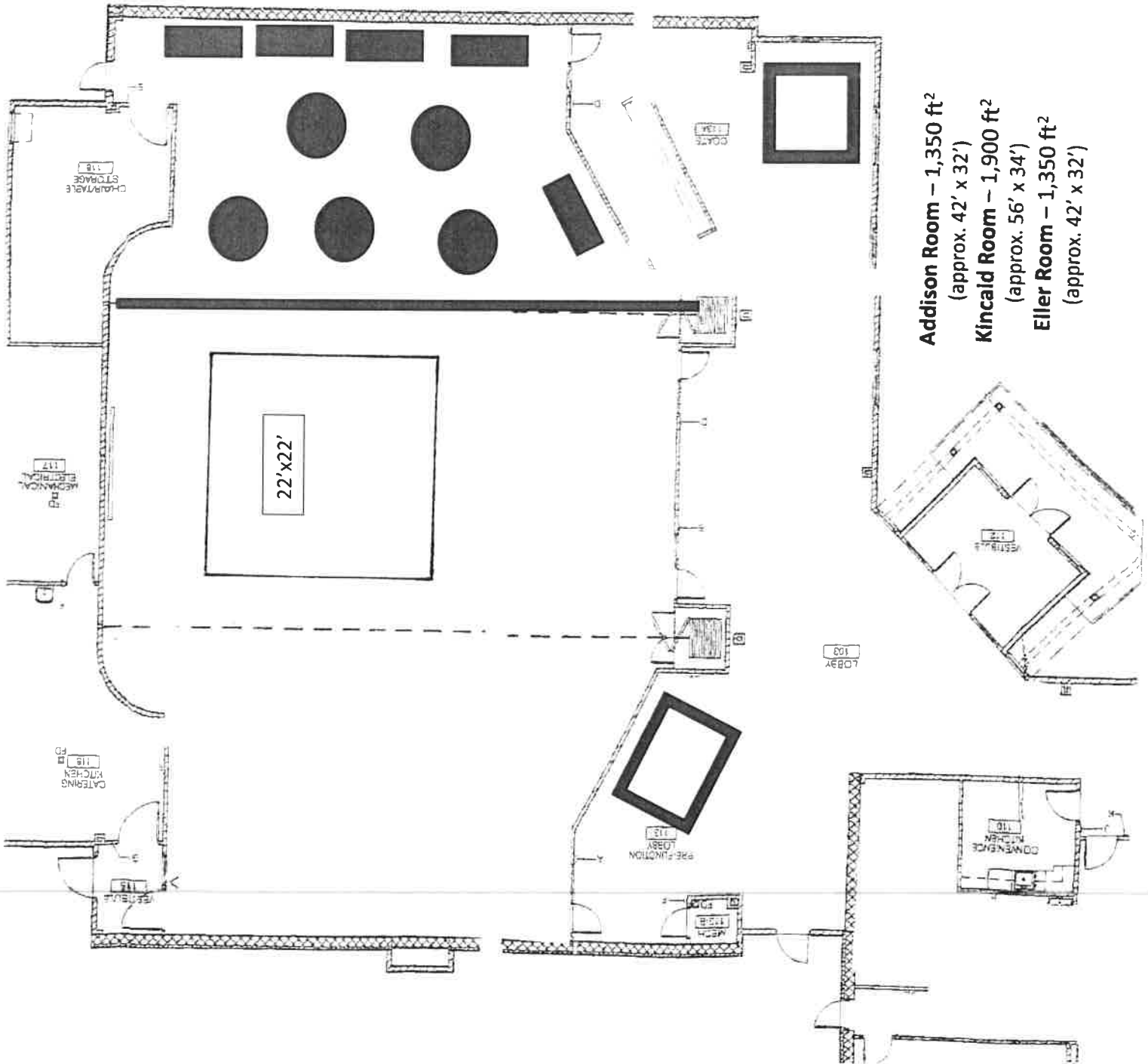


Standard 50 guests

1 Room

5 Rounds at 10 per

5 Rectangles



**Addison Room – 1,350 ft<sup>2</sup>**  
(approx. 42' x 32')

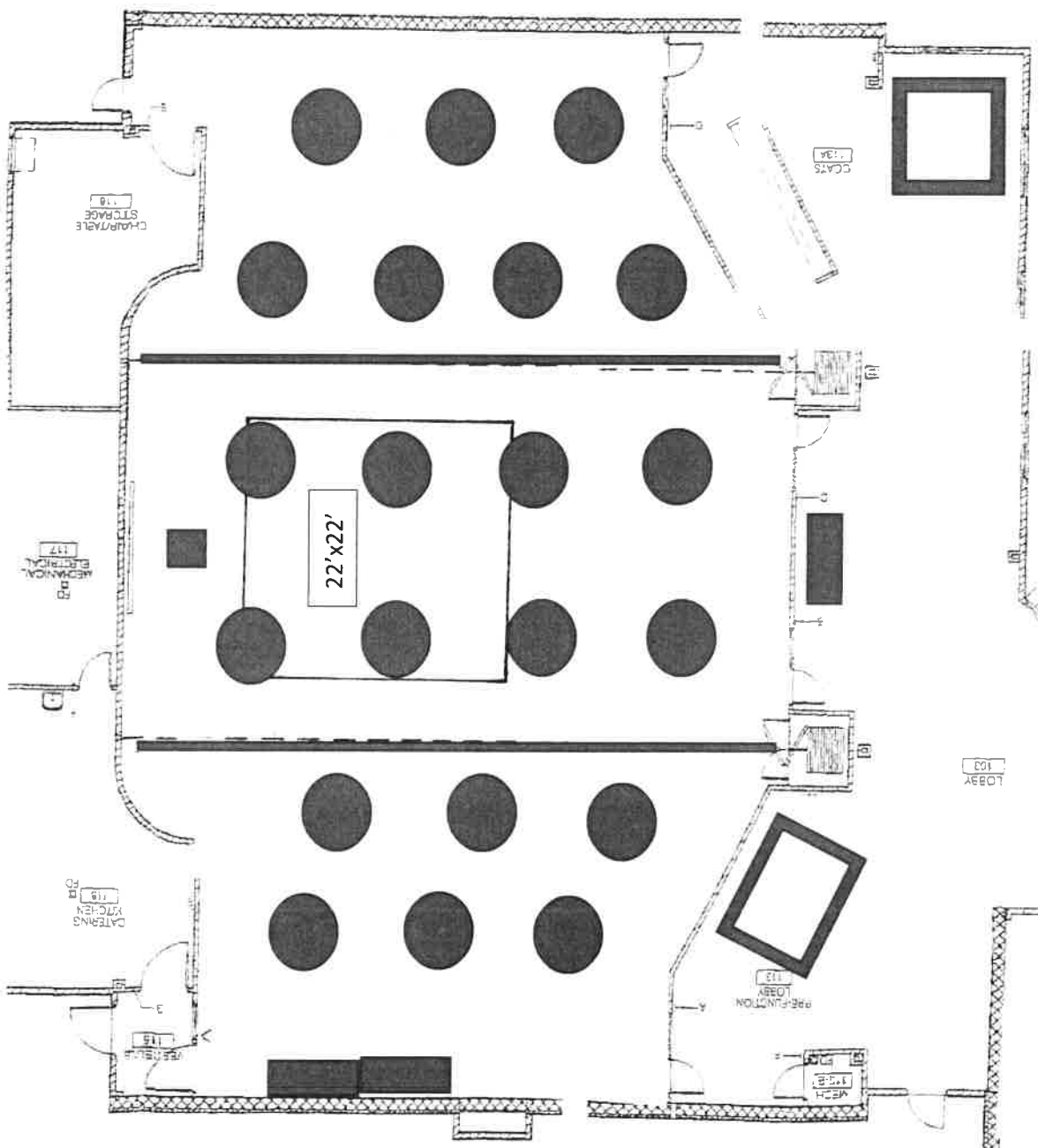
**Kincaid Room – 1,900 ft<sup>2</sup>**  
(approx. 56' x 34')

**Eller Room – 1,350 ft<sup>2</sup>**  
(approx. 42' x 32')

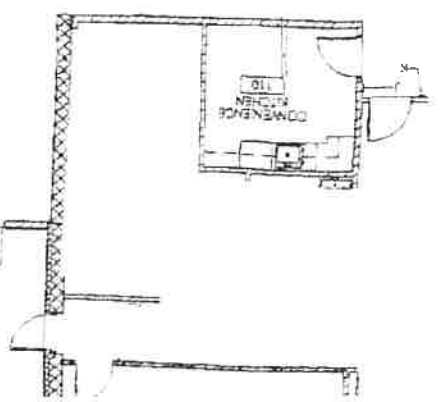
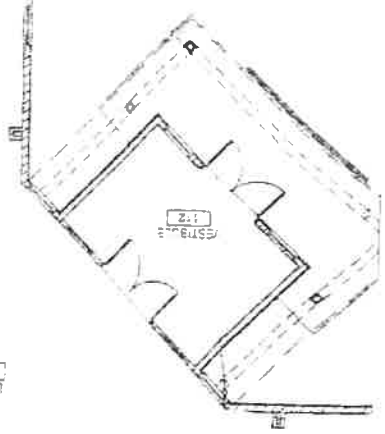


Single Room Set Up

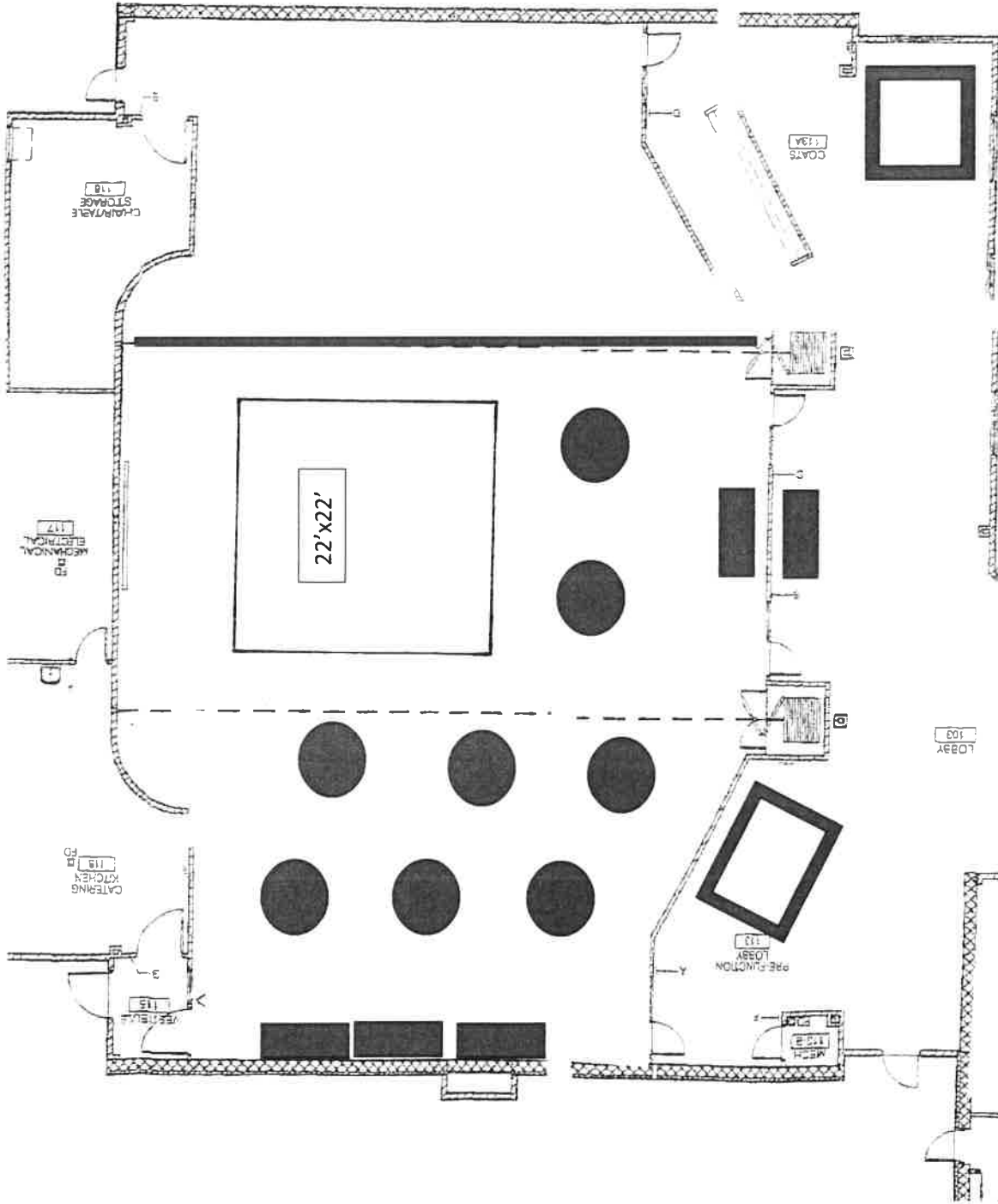
- 60 people
- 80 people
- 70 people



- Addison Room – 1,350 ft<sup>2</sup>**  
(approx. 42' x 32')
- Kincaid Room – 1,900 ft<sup>2</sup>**  
(approx. 56' x 34')
- Eller Room – 1,350 ft<sup>2</sup>**  
(approx. 42' x 32')



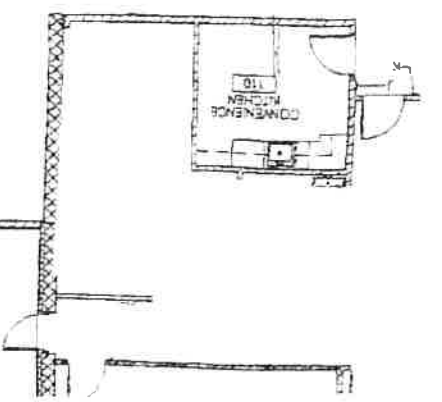
2 Rooms  
8 tables at 10 per  
80 people  
Dance floor open



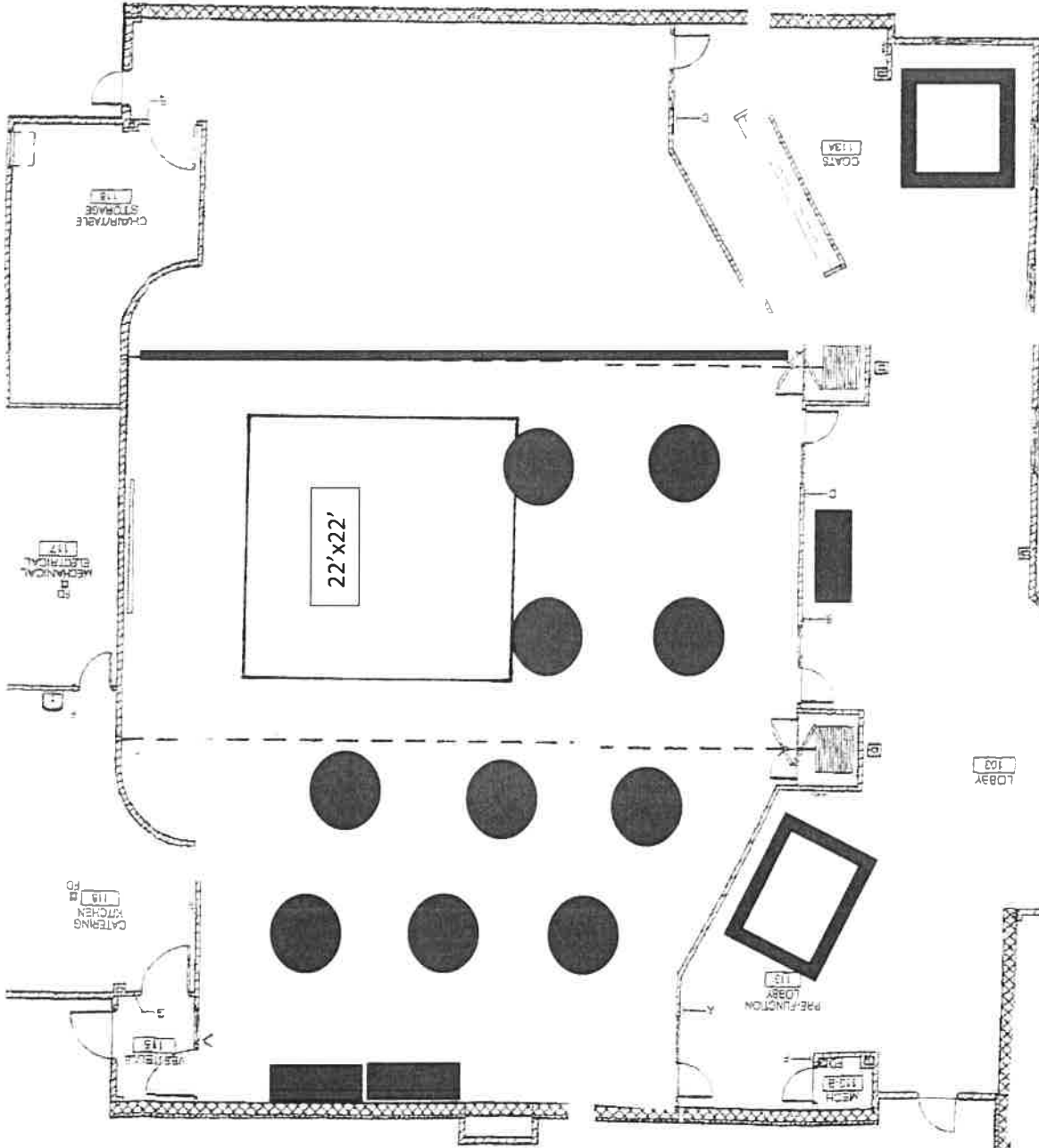
**Addison Room** – 1,350 ft<sup>2</sup>  
(approx. 42' x 32')

**Kincaid Room** – 1,900 ft<sup>2</sup>  
(approx. 56' x 34')

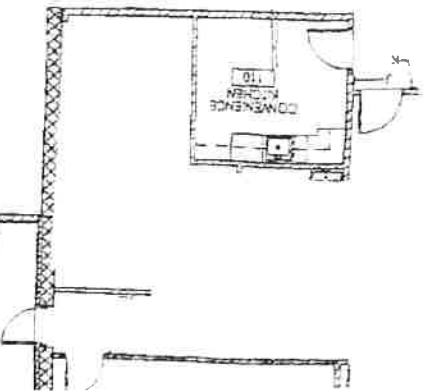
**Eller Room** – 1,350 ft<sup>2</sup>  
(approx. 42' x 32')



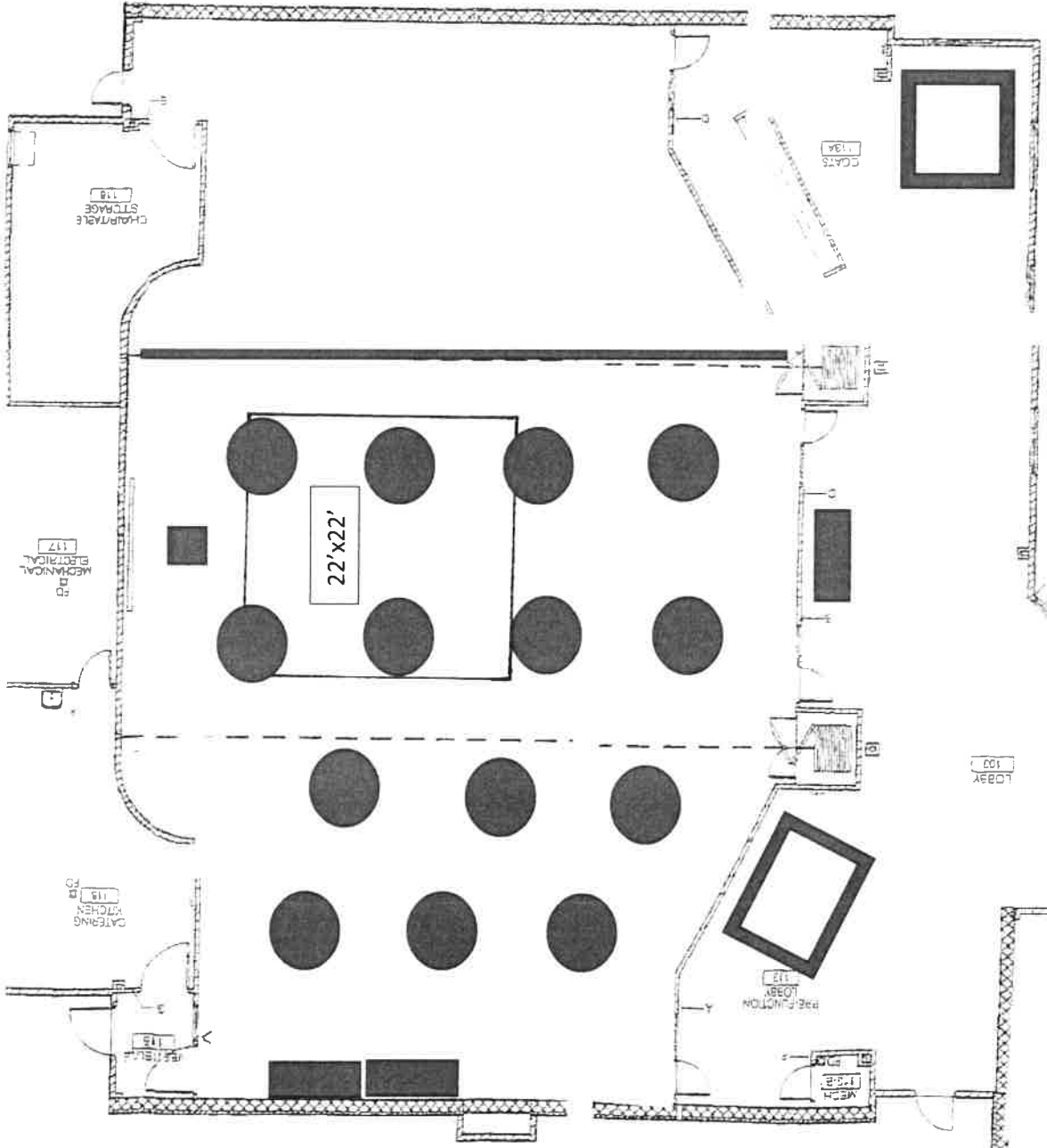
2 Rooms  
100 people



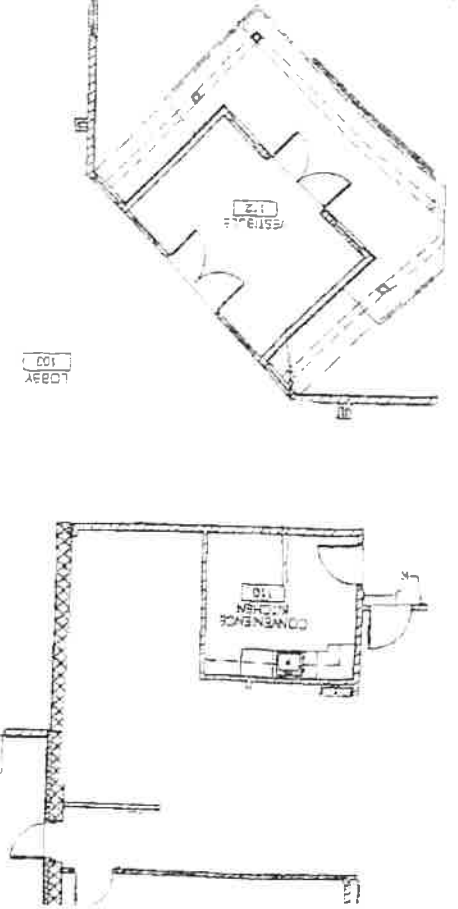
- Addison Room – 1,350 ft<sup>2</sup>**  
(approx. 42' x 32')
- Kincaid Room – 1,900 ft<sup>2</sup>**  
(approx. 56' x 34')
- Eller Room – 1,350 ft<sup>2</sup>**  
(approx. 42' x 32')



2 Rooms  
140 people

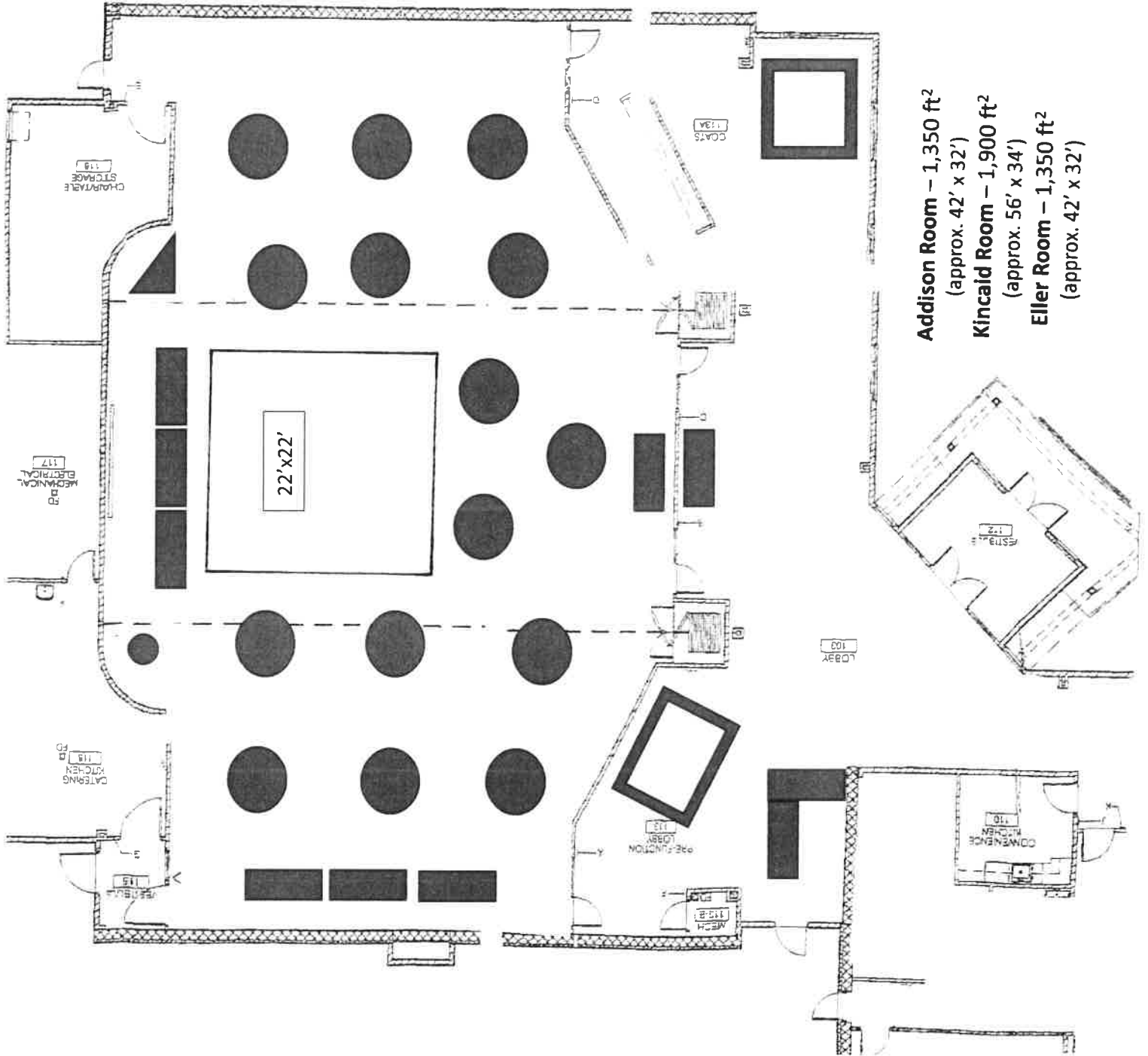


- Addison Room – 1,350 ft<sup>2</sup>  
(approx. 42' x 32')
- Kincaid Room – 1,900 ft<sup>2</sup>  
(approx. 56' x 34')
- Eller Room – 1,350 ft<sup>2</sup>  
(approx. 42' x 32')



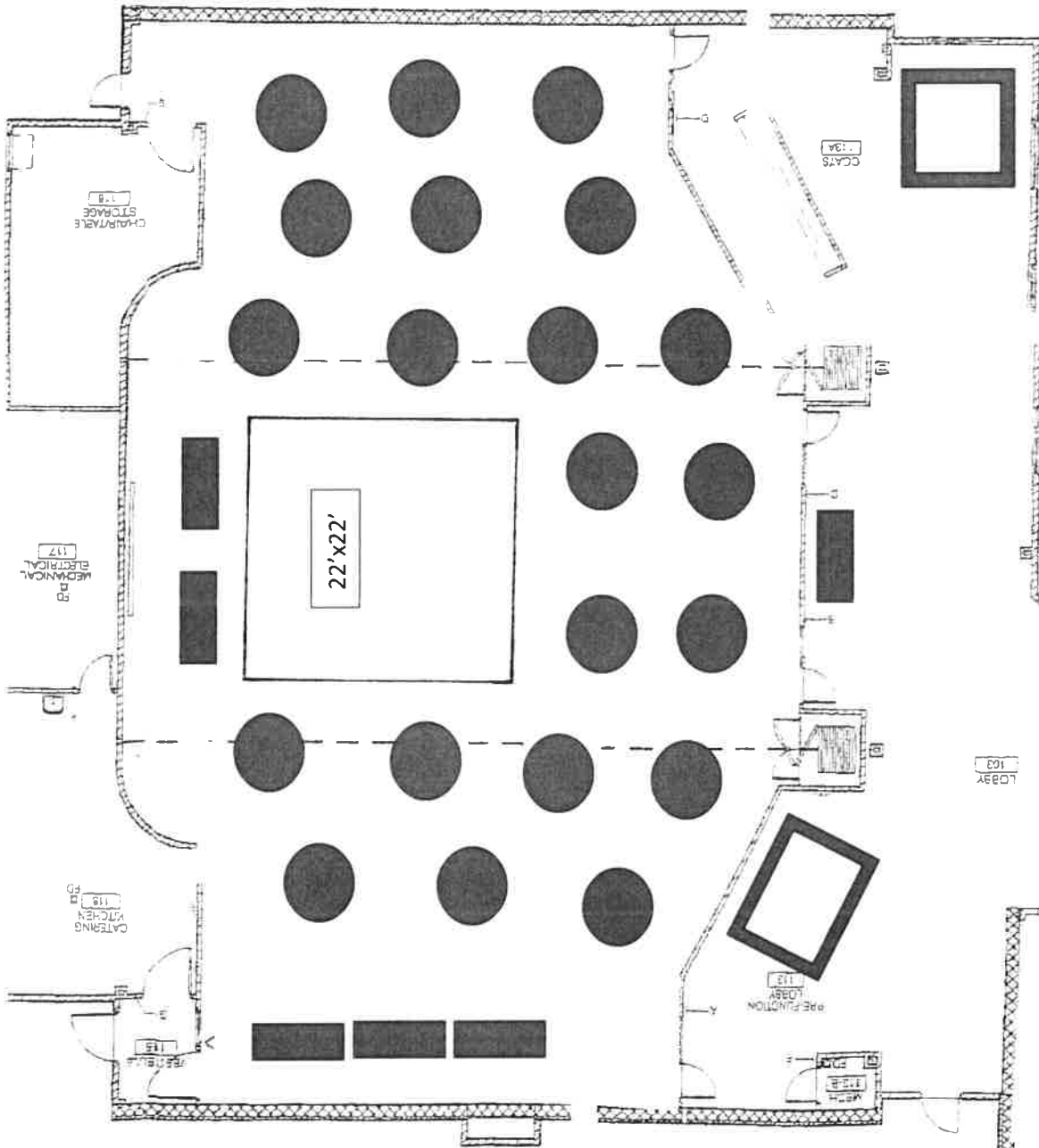
Standard Set Up for 150 guests with dance floor open and head table.

Serving in the Ball Room with Bar in lobby

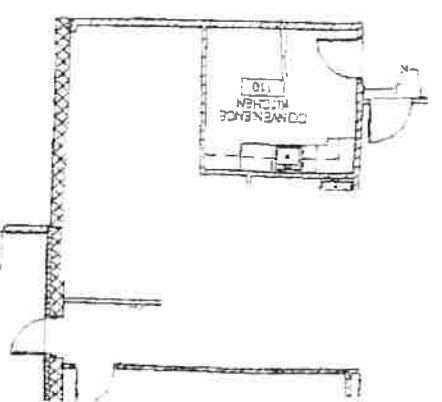


- Addison Room** – 1,350 ft<sup>2</sup>  
(approx. 42' x 32')
- Kincaid Room** – 1,900 ft<sup>2</sup>  
(approx. 56' x 34')
- Eller Room** – 1,350 ft<sup>2</sup>  
(approx. 42' x 32')

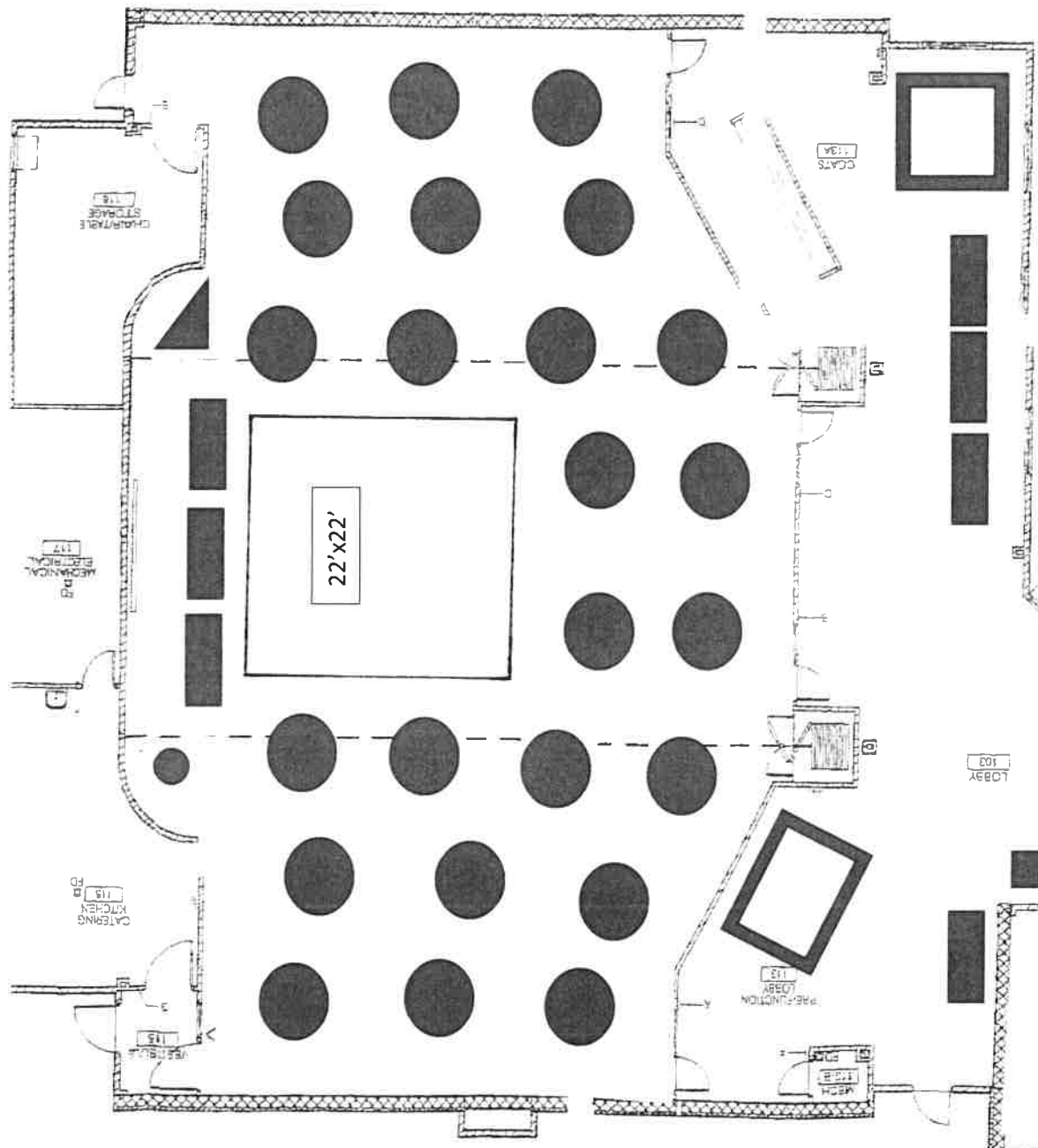
Standard Set Up for 210 guests dance floor open  
Serving tables in the ballroom



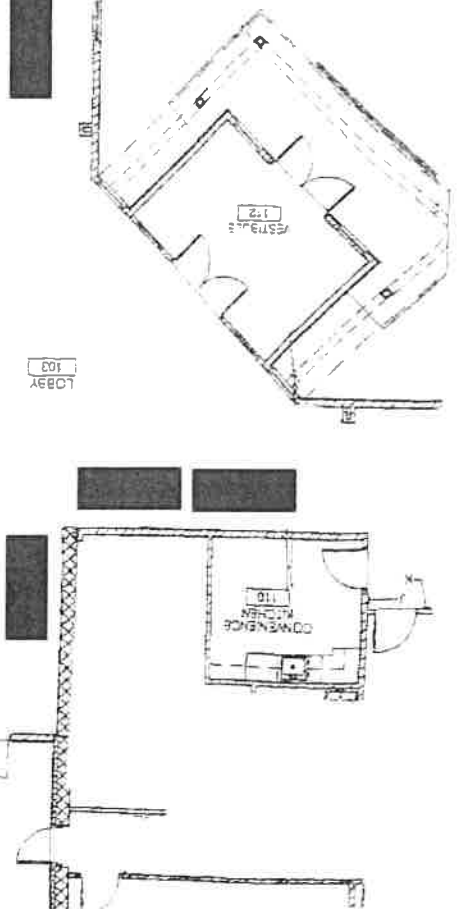
- Addison Room – 1,350 ft<sup>2</sup>  
(approx. 42' x 32')
- Kincaid Room – 1,900 ft<sup>2</sup>  
(approx. 56' x 34')
- Eller Room – 1,350 ft<sup>2</sup>  
(approx. 42' x 32')



Standard Set Up for 240 guests with dance floor open and head table.  
Serving tables will have to be in the lobby

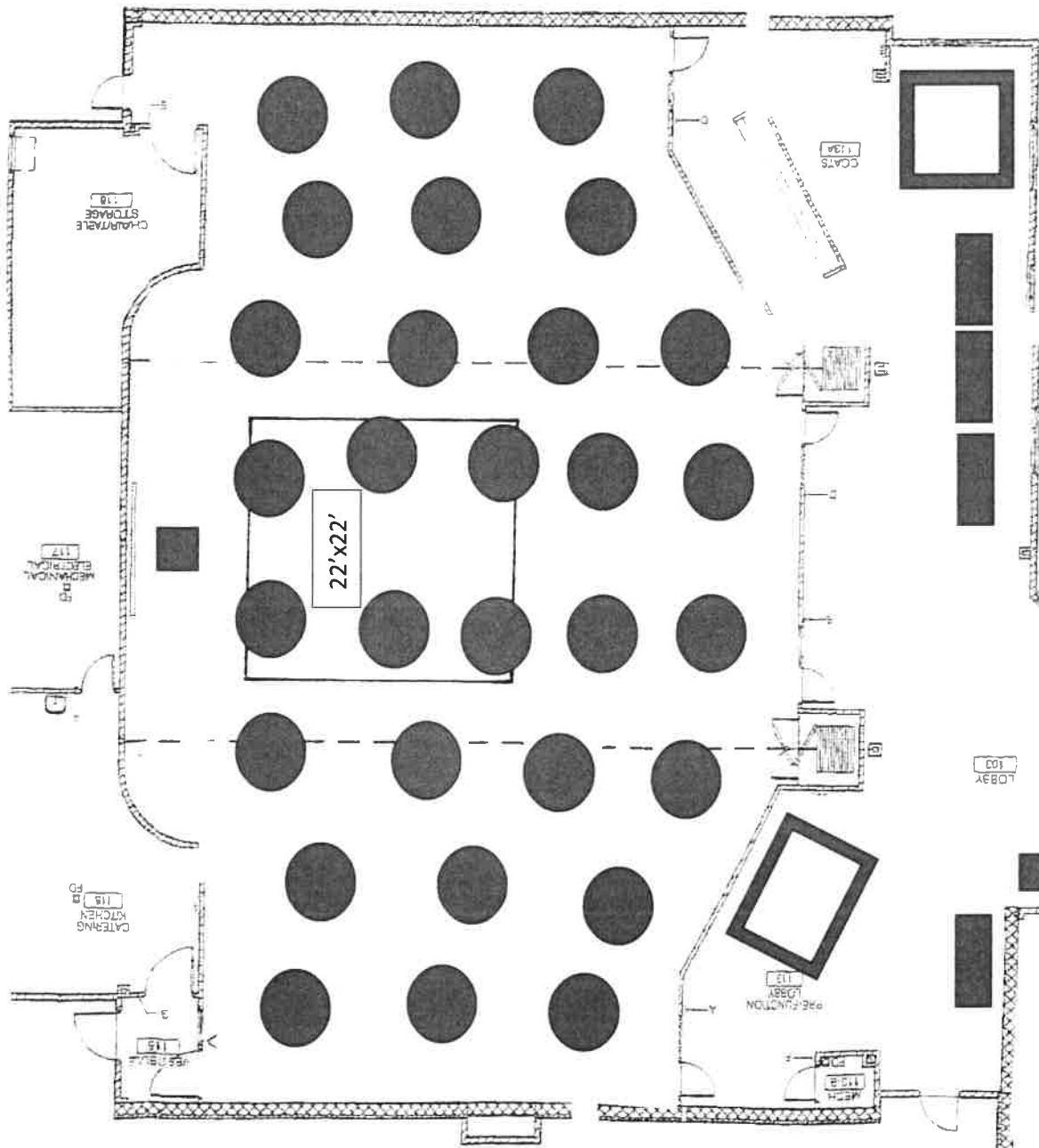


- Addison Room – 1,350 ft<sup>2</sup>**  
(approx. 42' x 32')
- Kincaid Room – 1,900 ft<sup>2</sup>**  
(approx. 56' x 34')
- Eller Room – 1,350 ft<sup>2</sup>**  
(approx. 42' x 32')





Standard Set Up for 300 guests no dance floor open  
 Serving tables will have to be in the lobby



- Addison Room – 1,350 ft<sup>2</sup>**  
(approx. 42' x 32')
- Kincaid Room – 1,900 ft<sup>2</sup>**  
(approx. 56' x 34')
- Eller Room – 1,350 ft<sup>2</sup>**  
(approx. 42' x 32')

